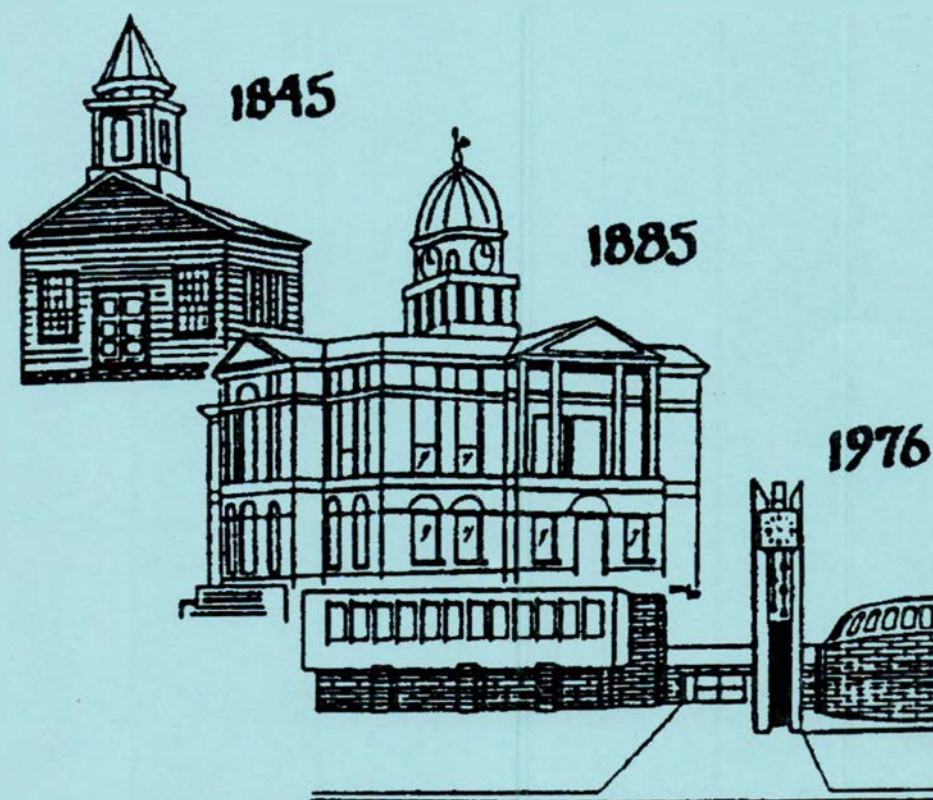


Eaton County Quest



Newsletter
Eaton County Genealogical Society
Eaton County, Michigan

Issue #64

September – December 2008

ISSN 1075-881X

Eaton County Genealogical Society Quest

Issue # 64

September - December, 2008

Contents

Officers	1
Would you have moved in 1585?	2
Michigan State Censuses for 1884 & 1894	3
Miss Lela Randall	4
Dorcas Club Quilt	4
Ancestor's Paper Trail (resource help)	5
1895 Oneida Township Plat Map Index	6
Passenger List Web Sites	8
The Weather Report	9
The Disappearance of the Charlotte Stork Fountain	11
Eaton County Death Records; Volume 1	13
The Witch Hunts of Salem	18
Muster Roll Information for Post 40	27
From the Librarian	39
Index	41

Eaton County Genealogical Society

1885 Historical Courthouse
100 West Lawrence Avenue
Charlotte Michigan 48813-0337

Phone: 517/543-8792 FAX: 517/543-6999

Email: ecgsoc@juno.com

2007 – 2008 Officers:

President	Marcy Cousino
Vice President	Jim Collins, Jo Glasgow
Treasurer	Stephen F Smith
Corresponding Secretary	Sheila Mott
Membership Secretary	Barbara Smith
Recording Secretary	Susan Polhamus
Librarian	Sharlene Thuma
Historian	Betty L Goostrey
Publicity	Edward Dunning
Quest Editor	Vicki L Dukes
Webmaster	Sherry Copenhaver
Michigan Genealogical Council Delegate	Betty Polhamus
Michigan Genealogical Council Delegate	Clarence Hodges
Alternates	Jim Collins, Jo Glasgow
Federation of Genealogical Societies Delegate	Shirley Hodges

Eaton County Genealogical Society Library Research Rooms

Location: ground floor of the 1885 Historical Courthouse
corner of Lawrence Avenue and Cochran Avenue in
down town Charlotte, Michigan. Handicap accessible
from back parking lot.

Membership Meetings: 7:00 pm

3rd Wednesday of March thru October

2nd Wednesday of November

No membership meetings: December, January and February.

Research Room Hours:

Monday – Thursday 10:00 am – 2:00 pm

(Please call ahead if coming from a long distance to ensure the room is open.)

Visit Our Web Site: www.miegs.org

Hello My Genealogical Friends!



Would you be adventurous enough to explore a new land? Would you be willing to gather up your family and all your worldly goods and move to a land you knew nothing about?

Think about it for a moment. What would it take to make such a decision? Even today, with all our modern conveniences, relocating is a pain for most people. Yet, people came by the hundreds to the shores of America, a new world, looking for a chance to improve their life or escape an old way. Barely a thousand years ago, no one wanted to sail on the open seas. Unknown dangers lay out there and few were willing to take a chance. Up until 1300 AD, Europeans didn't travel much. The great majority of people spent their entire lives within a few miles of their home and birth place. (Remember this when searching records)

Unless your heritage is American Indian, your ancestors came to American shores from someplace else in the world. In the early 1500's, the Spanish showed little interest in land that did not produce gold. England was not about to be left out of the new world and neither were the French. The Spanish quickly established a colony at St Augustine, Florida. This gave them a base camp. The British sent Sir Richard Greenville to the new world and he landed at Roanoke, VA 1585. Both of these were destroyed by hurricanes.

Now, today, we are seeking those first beginnings. Looking for our first immigrant; wondering where he came from. Well, folks, many of our ancestors kept excellent records or family bibles and of course they recorded all births, marriages and deaths. They never lied on the census records! They even recorded all land transactions at the land office. **OF COURSE THEY DID!** Now if that were true; you would not be reading the Quest and wondering "where do I begin?"

Begin with yourself and read on. Thank you for becoming a member of the Eaton County Genealogical Society and I hope you enjoy this issue of the Quest.

Vicki

Michigan State Censuses
Available at the Library of Michigan

County	Date	Index	Notes	County	Date	Index	Notes
Barry	1884	N		Lapeer	1884	N	
	1894	N			1894	N	
Bay	1884	N		Leelanau	1884	N	
	1894	N			1894	N	
Benzie	1884	N		Lenawee	1884	N	
	1894	N			1894	N	
Crawford	1884	N		Menominee	1884	N	
	1894	N			1894	N	
Dickinson	1894	N		Midland	1894	Y	Abstracted
Emmet	1884	Y		Montcalm	1884	Y	
Gratiot	1894	N			1894	Y	
Hillsdale	1884	N	Incomplete	Muskegon	1884	Y	Partial index
	1894	Y			1894	Y	
Ingham	1884	N		Newaygo	1884	Y	
	1894	Y			1894	Y	
Jackson	1884	Y	Partial Index	Ottawa	1884	Y	
	1894	N			1894	N	
Kalamazoo	1884	N	Incomplete	Roscommon	1884	N	
	1894	N		St. Clair	1884	N	
Kent	1884	Y			1894	N	
	1894	Y		St. Joseph	1884	N	
Keweenaw	1884	N			1894	N	
	1894	N		Washtenaw	1884	N	
					1894	Y	

Miss Lela Randall

By Larry Randall

A post card dated Nov 3, 1909 with a winter scene of Charlotte addressed to **Miss Lela Randall** was for sale on e-bay. The hand written text reads "11, 3, 09 Hello Little one how does this find you? Well I hope. Over to C today with a load of (not clear) lambs. Quite a nice day. Will write soon. (The signature is not really clear) H R S."

Lela was Larry's grandfather's first cousin and he purchased the card to add to his family collection. You never know what you might find and where these days.

Larry Randall furnished the following information about Lela. Records show that she was born in Vermontville, Eaton County on 18 Oct. 1889. A few years later she married **Vern Rishel** and had moved to Leroy in Calhoun County, MI. Vern was born 30 Nov 1883 in Scotts, Kalamazoo County, MI the son of **David Rishel and Mary Shirey**.

Lela's residence in 1914 was Pine Creek, Leroy Township, Calhoun County, MI.

Marriage License issued 29 Jun 1915 to **Vern E Rishel**, age 31, white, residence in Kalamazoo, MI, birthplace Scotts, MI. Occupation: laborer. Father: **David R. Rishel** and mother **Mary Ellen Shirey**. No previous marriages. Married on 30 June 1915 in LeRoy by **W. Exner**, clergyman. Witnesses were **Glenn W Adams** and **Pearl M Adams** both of Battle Creek, MI.

Married to **Lela A Randall**, 25, white, residing in Athens, birthplace Vermontville, Eaton County, MI. Occupation: schoolteacher. Father: **Austin P Randall** and mother was **Susan A Norton**. No previous marriages.

Lela had the following brothers: **Earl, Glen, Clarence and Elon**. Her sisters were: **Anna Bell** who married **Orrin Tubbs**, **Olive Ada** married **Ben Shetenhelm** and **Josephne Amaretta** married **Walter Nidy**.

Vern died 14 August 1965 and **Lela** out lived him by five more years and died on 14 March 1970.

DORCAS CLUB QUILT

By Mary Jean Baker

The Dorcas Club Quilt was donated by Henning's family to Courthouse Square Association. It has forty two 10 X 10 ½ inch square signature blocks. It is made of muslin with red embroidery stitches.

There are many, many names on the quilt. Here are the names inside the circle in the center of each of the 42 blocks. (some of the spelling may be incorrect)

First Row: **Nora COLE** – Modern
Dorcas Club 1927 – **Mary E. LOHR** –
Theriane PARISH – **Eva WINDSLOW**
– **Lena BIGLEY**

Second Row: a face – **Madeline NEWTH** – **Inez NORTON** – **Verda R. DODGE** – **Edna SYNDER** – Business Block

Third Row: **Phebe Clara HENNINGS** –
Etta BOLOSK – Airplane – **Lucille
GOODMAN 1927** – **Etta V. FULLER** –
Dorcas Club

Fourth Row: **Lillie BENTON** –
Madaline NEWTH – **Hattie BROWN** –
Etta FULLER – a flag – Modern
Dorcas Club 1927

Fifth Row: **Mary PICKFORD** – a face –
Bertha BETTS – **Mabel A. SMITH** –
MULLINS

Sixth Row: **Bessie MANN** – **Olive
DODGE** – **Daisy GOODMAN 1927** –
Roy Andrews DRAGG Line – **Calvin
COOLIDGE** – **Varda R. DODGE**

Seventh Row: **Andrews DRAY Line
1927** – **Eggleston** – **Lillie M. PLATT** –
C. REED – **Lillie PRATT** – **T. E.
KREBS**

Anyone with family members on this
quilt may see the quilt at Courthouse
Square

Resource: Names transcribed from
the quilt by **Mary Jean BAKER**,
member of the Eaton County
Genealogy Society and Courthouse
Square Board.

Ancestor's Paper Trail

Take a research shortcut by first
looking at rosters other researchers
have compiled. "Passenger and
Immigration List Index" 1500s – 1900s
by **P. William Filby and Mary K
Meyer**; is a list of nearly 500,000
emigrants and is in print at many
libraries.

Did you know that the Alien Act of June
25, 1798 required customs officials at
American ports to keep lists of all non-
British arrivals, including each person's
name, age, place of birth and physical
description? There are two known to
exist. The list for Beverly and Salem,
Mass., covers 1798 to 1800; it's
transcribed in the New England
Historical and Genealogical Register,
Volume 106.

The National Archives and Records
Administration (NARA)
Archives.gov has two microfilms
containing pre 1820 passenger lists:
Work Projects Administration
Transcript of Passenger Lists of
Vessels Arriving at New Orleans,
Louisiana, 1813-1849 (M2009) and
Passenger Lists of Vessels Arriving at
Philadelphia, Pennsylvania 1800-1882
(M425). The lists are indexed in M360

NARA Pre-1820 passenger lists:
www.archives.gov/genealogy/immigration/passenger-arrival.html#colonial

Immigration Laws 1700 – 1800
www.Oriole.umd.edu/~mddlmddl/791/legislation/html/immigration1700.html

Finding Passenger lists before 1820
www.home.att.net/~weemonster/1820.html

Pennsylvania State Archives
www.phmc.state.pa.us/bah/dam/overview.htm

Resource: Family Tree Magazine, July
2007, pgs 22 – 27; Maureen A Taylor.

Oneida Township 1895 Plat Map Index
4 North Range 4 West
(Continued from Quest issue #63)

Section 19

Figg	S. A.	67
Wollpert	H. J.	80
Wollpert	Luella O.	80
Woods	W. C.	80
O'Neil	J. H.	80
Trumble	L. C.	39
Mosher	Edgar T & Wife	37
Mitchell	Andrew	
Reynolds	Louisa J.	74
Mitchell	Chas L.	37
Stack	N.	18
Stark	J. H.	18
Borough	S. J.	

Section 20

Watson	G B.	40
Pelton	W. A.	40
Hinman	M. A.	80
Foster	Darwin	80
Crist	Elmer	20
Stark	J. H.	40
O'Neil	J. H.	40
Vorce	E. B.	20
Skinner	G. D.	35
D. W. G.		2
Earl	B. F.	160
Roth	Edward	80

Section 21

Ewing	John W.	160
VanAlstine	Geo W. & Wife	60
VanAlstine	G. L.	
Bement	Edwin	40
Walsh	J. H.	40
Brunger	William	80
Edwards	Jane	
Sherman	Mary	1
Guilford	Ransom	60
Mitchell	W. A.	40
Brunger	Edgar	40

Guilford	Irving	40
Guilford	Irving M.	40

Section 22

Quale	Addie Clare	100
Kenyon	Daniel	100
Nelson	Cole	51
Joslin	L. M.	51
Lester	John	59
Dudley	Merritt	80
Tanner	Maria	80
Earl	Estella	80
Walsh	John H	40

Section 23

Standish	Miles	80
Wythe	Chas. W.	120
Smith	Ira	40
Althouse	John	80
Granger	Sylvester (est.)	40
Snyder	Geo O.	40
Sattler	Martin	40
Sattler	Martin	40
Schultz	Henry	39
Schultz	Frederick	42
Fees	Christian	80

Section 24

Gales	Geo. W.	40
Capwell	John	120
Shoall	Jacob	41
Sharp	Richard	40
Lewis	Lucinda	80
Davis	Merlon	40
Salsbury	E. A. & E. J.	40
Dingler	Jacob	20
Smith	Analilne	
Dingler	Jacob	40
Judson	Susan	40
Malby	C.S. & wife	80

Section 25

Shoall	Jacob	80
Glenn	G.	40
Elkins	J.B. & E.S.	40

Oneida Township 1895 Plat Map Index **4 North Range 4 West** (Continued from Quest issue #63)

Ford	Frank	60	Hatch	Edwin	69
Abbott	Mary	10	Hitchcock	Wm.	100
Preston	Chas M.	20	Skinner	Rebecca	40
Huddleson	Floy	40	Skinner (life lease)	Perry & Betsey	40
Allen	C.G.	65			
Elkins	E.S.	40			
Nichols	Truman	60	Section 30		
Nichols	Geo W. & Wife	110	Challender	Thos	35
Halbert	Harrison	60	Nottingham	H.	
			L. T.		3
Section 26			Pardee	L.	54
Sattler	John	120	Fleming	Wm. F.	
Sattler	Martha	40	Maskle/Markle	John	40
Murray	John	80	Deane & McCull	Atty's	40
Murray	Andrew	80	Martin	Josephine	40
Allen	C.G.	61	Sherman	Thomas	20
Smith	J.C.	20	Maskle/Markle	C.	20
Griffin	Morton & Ella	120	Harned	A. O.	40
Eystone	Mary	40	Clay	C. L. & H. L.	40
Smith	C.W. & J.C.	80	Clay	John	40
			Geer	Phila	40
Section 27			Kelley	J. C.	40
Taylor	I.S.	80	Richardson	C. B.	40
Moon	Marlin	80	William	James	40
Ebel	John	80	Borbier	Alonzo	58
Edwards	Z.E.	40			
Edwards	Mary A.		Section 31		
Brunger	Chas. W.	100	Depew	Samuel	73
Brunger	Sylvania	30	Kelley	Lucia E.	60
Brunger	Thomas	65	Rosier	A. H.	20
McMullin	Edward M.	65	Rosier	R. C.	29
McMullin	Joseph	80	Carpenter	Emily	12
			Hatch	Edwin	40
Section 28			Lunore	Frank	75
Mitchell	Alfred	120	Earl	Ceyland	130
Holmes	Sylvania	80	Sherman	Ransom	80
McMullin	Jennie	80	Maxson	I. Horatio	
Beckman	J. C.	160	Baird	William	
Blashfield	Jas	40			
Clark	Jas M.	160	Section 32		
			Rosier	R. C.	80
Section 29			Hitchcock	W. L.	40
Hazelton	Harriett	37	Thomas	M. V.	160
Mitchell	Sarah	51	Hancock	John	80
Bentley	Chas. A.	73	Earl	Wm.	80
Earl	C. H.	60	Waldron	B. E. (est.)	80
Noecker	Oliver	40	Bear	Anson	35
Bare	M. A. & M. D.	30	Rosier	A. H.	40
Noecker	Theophilis	80			

Oneida Township 1895 Plat Map Index **4 North Range 4 West** (Continued from Quest issue #63)

Section 33

Thomas	M. V.	40
Hults	Peter	34
Quantrell	A. B.	61
Quantrell	Laural L.	80
Mitchell	W. Z.	40
Otto	Joseph	90
Backus	Herman	110
Lock	Geo.	60
Hoople	Geo. R.	70
Cogsdill	Ellen P.	50

Section 34

Strange	John S.	202
Strange	Daniel	386
Otto	Joseph	49

Section 35

Glenn	Christopher	100
Nixon	L. J.	160
Nixon	Edwin	120
Chipman	Austin	180
Granger	Sylvester (est.)	80

Section 36

Preston	Chas. M.	40
Lankton	D. Eugene	119
Potter	Geo N.	240
Nicholas	Martin	104
Nicholas	J. P.	6
Holcomb	Ira P.	102
Dunn	Jas.	20

These are the land owners listed in the bottom 18 sections of the 1895 Plat Map for Oneida Township, Eaton County, MI. They were abstracted by Vicki L. Dukes. Last names are spelled as presented on the map. Acreage listed if noted on the map.

Passenger Lists **Web Sites**

www.Ancestry.com

Look in the US Immigration Collection. Digital images of the National Archives' passenger lists for all major US ports.

www.Castlegarden.org

Free

Passengers landing in New York from 1830 to 1892

www.ellisland.org

Free

Only those who came through Ellis Island between 1892 to 1924.

www.immigrants.buy.edu

Free

Emigrant records created in the countries of departure.

www.immigrantships.net

Free

Abstracted from manifests for ports worldwide spanning 1492 to 1966.

www.worldvitalrecords.com

\$5.95/month or \$49.95/yearly

Transcribed records of immigrant ships: New York bound
 Scandinavian immigrants 1630 to 1674 and German immigrants 1847 to 1871; Philadelphia 1800 to 1819 and Irish immigrants to Canada 1841 to 1849.

Resource: Family Tree Magazine, July 2008, page 77

The Weather Report

By Vicki L Dukes

The first thing I do when we receive the Lansing State Journal is pull out the Local Section to check what the weather will be for the day and the rest of the week. Everyone wants to know what it will be like tomorrow but do you remember what it was like on your wedding day? Don't you ever wonder what the weather was like on the day you were born or when your parents or grandparents got married?

A windy squall blew the Mayflower off track, sending its passengers to the coast of New England rather than their intended destination in temperate Virginia. Unprepared for the harsher northern conditions, half the passengers perished that winter.

Your ancestors may have been affected by severe weather conditions or natural disasters. You can go to Weather Channel's "100 Biggest Weather Moments" which highlights life-altering atmospheric occurrences. For more information go to: www.weather.com/aboutus/television/100biggest

Here are 10 weather events that could have influenced your family history:

1815: The Great September Gale – hurricane struck New England area. Homes destroyed and lives were lost.

1816: The Year Without a Summer – Mt Tambora erupted in Indonesia. Crops failed as frost struck during the summer in our Northeast.

1868 – 1869 Great Lakes Storms; Great Lakes storm grounded or sank more than 3,000 ships and killed 500 people. President Ulysses S. Grant signed into law the storm signal service which was the predecessor of the US Weather Service of Feb 9, 1870.

1873 – 1877 Locust Plagues: The largest swarm recorded in 1874 covered 198,000 square miles! Crops were destroyed in Colorado, Wyoming, Nebraska and other mid-western states.

1888: Fierce Blizzards: A surprise blizzard hit Montana, Dakota Territory and Nebraska January 12 – 13th; the temperature suddenly dropped to -20 degrees Fahrenheit. Children were caught unprepared at schools and farmers in their fields. Hundreds lost their lives trying to get home.

1900: Galveston Hurricane and **1925:** Tri-State Tornado

1927: Mississippi River Flood

1933 – 1930: Dust Bowl – American Experience: Surviving the Dust Bowl at www.pbs.org/wgbh/amex/dustbowl

1937 – Ohio River Flood: In the midst of struggles with the Great Depression and the Dust Bowl, a million people were left homeless and 385 dead. Rick Bell details

Check out the websites for more weather information:

Page 9

The Weather Report

By Vicki L Dukes

the deluge in The Great Flood of 1937: "Rising Waters, Soaring Spirits" (Butler Books, \$25)

When writing your family history, add some colorful information to grab people's interest but you want this information to be factual. Wouldn't it be great to write about your great grandmother's wedding day and say: "Great Grandmother Lucy got married on a bright sunny day the first of June" or "I was born on a stormy winter night with 5 inches of snow coming down!"

Adding the detail of weather to key family history dates can be a fascinating way to walk in ancestors' footsteps and it may explain their confusing decisions. When you turn up weather clues it may explain why certain things occurred.

Use these five online resources for further research:

Historical Newspapers:

www.genealogybank.com (\$69.95/year) historical newspaper collection

www.newsbank.com (free through many libraries)

www.gendisaster.com (free) searchable articles

Government Agencies:

www.ncdc.noaa.gov/oa/ncdc.html National Climatic Data Center has weather reports grouped by weather stations back to the 1930s for most and some back to 1870. (each report costs \$2)

www.aoml.noaa.gov/general/lib/lib1nhclib.index.htm (free) from 1872

www.docs.lib.noaa.gov/rescue/dwm/data_rescue_daily_weather_maps.htm (free) weather map showing daily temperature and rainfall for over 200 US cities.

The Old Farmers Almanac:

www.almanac.com/weatherhistory for cities in the US and Canada from 1946.

Colonial Weather Project:

www.umaine.edu/oldweather (free) compiled from diaries and period accounts for New England and New York from 1623 to the early 1900s.

Research Services:

www.weather-warehouse.com can give you daily weather for hundreds of cities on dates back to 1902; 2 days of reports \$4.95.

www.weatherbank.com/historical-weather-archive.html reports dating back to mid 1800s. Buy a month's worth for \$2

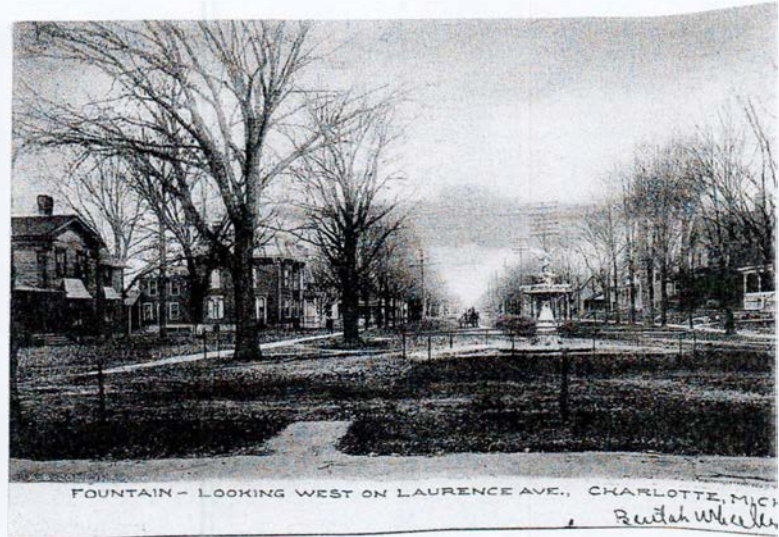
Resource: *Family Tree Magazine*, "The Weather Report", Taylor, Maureen A.; May 2008, pgs 26 – 31. Printed with permission from the author, Maureen A Taylor.

The Disappearance of the Charlotte Stork Fountain

By Mary Jean Baker

Most residents over sixty-five, who grew up in Charlotte, will remember the Stork Fountain at the intersection of Lawrence, Lansing and Pleasant Streets.

It was constructed around 1888 when the city inaugurated water service in the village of Charlotte. It was used as a watering place for horses when the farmers came to town for their supplies. (This post card is dated 1907. It was written by **Buelah Wheeler** to her Sunday school teacher, **Mrs O. B Lake** of Eaton Rapids. You are looking west on Laurence Ave.)



(Another view of the same fountain on Laurence Ave. This post card is dated 1890. It is written by **Mary to Mrs Charles Ward** of Arlington, Wash.)

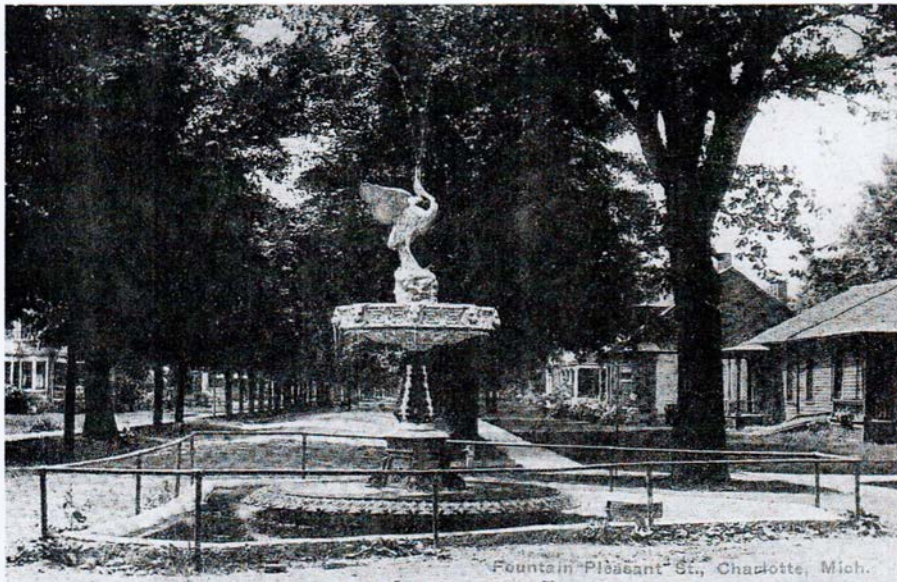
As cars arrived on the scene, the fountain was hit many times due to

The Disappearance of the Charlotte Stork Fountain

motorists failing to slow up on the turn. Residents urged the city council to have it repaired, but the battered fountain was wrecked for the final time on October 15, 1949 when **Charles Betz** drove his car into it from the north side. The structure was removed and the spot covered with blacktop to widen the driving space on the street.

The story goes that what was left of the old fountain was loaded onto a truck and hauled to a Lansing junk yard.

In a 1949 edition of the *Charlotte Republican-Tribune*, it read: "As originally erected, the stork fountain was a 'thing of beauty, if not a 'joy forever.'" It went on to say that the jet of water issuing upward from the thrown back head of the bird was caught by a high bowl, ornamented along the edge with lions' heads from the mouths of which the water flowed to streams into the larger bowl at the base. There also were three triangular additions built to the lower bowl, which were used as flower beds.



This fountain was located on Pleasant Street and the post card was never mailed out. (Post cards owned by Vicki L Dukes)

EATON COUNTY DEATH RECORDS

Betty Goostrey abstracted the following information from the Eaton County Death Records, Volume 1. All vital records maybe obtain by writing to the County Clerk's office, Eaton County Courthouse, Independence Dr., Charlotte, MI 48813

Page: 37
File Number: 671
Date of Death: 7 Mar 1871
Date Recorded: 11 May 1872
Name: **Mary SMITH**
Age: 5 mo - 20 day Sex: F
Place of Death: Sunfield
Cause of Death: Bowel Disease
Birthplace: not given
Residence: not given
Father: not given
Mother: not given

TOWNSHIP OF WALTON

Page: 37
File Number: 672
Date of Death: 06 Jan 1871
Date Recorded: 21 May 1872
Name: **Lucy C. JEWELL/JERRETT**
Age: 24Y 3M 5D Sex: F
Marital: Married
Place of Death: Walton
Cause of Death: Consumption
Birthplace: Ohio
Father: unknown
Mother: unknown

Page: 37
File Number: 673
Date of Death: 10 Feb 1871
Date Recorded: 21 May 1872
Name: **Burton PEIRCE**
(record has it spelled this way)
Age: 5y 7m Sex: M
Place of Death: Walton

Cause of Death: Inflammation
Birthplace: Walton
Residence: Walton
Father: **Ancil Henry PIERCE**
Mother: **Margaret Elizabeth PIERCE**

Page: 37
File Number: 674
Date of Death: 24 May 1871
Date Recorded: 21 May 1872
Name: **Dora BROWNAL**
Age: 1Y 6M 8D Sex: F
Place of Death: Walton
Cause of Death: Fever
Birthplace: Walton
Residence: Walton
Father: **Chancy BROWNEL**
Mother: **Jenett BROWNELL**

Page: 37
File Number: 675
Date of Death: 01 August 1871
Date Recorded: 21 May 1872
Name: **Robert Clinton GRAGG**
Age: 11y 7m 10d Sex: M
Place of Death: Walton
Cause of Death: Killed by a horse
Birthplace: Walton
Residence: Walton
Father: **John H. GRAGG**
Mother: **Martha GRAGG**

Page: 37
File Number: 676
Date of Death: 2 Nov 1871
Date Recorded: 21 May 1872
Name: **Myron Wesley SLAYTON**
Age: 3y 6m 2d Sex: M
Place of Death: Walton
Cause of Death: Fever
Birthplace: Walton
Residence: Walton
Father: **Myron SLAYTON**
Mother: **Rebecca SLAYTON**

EATON COUNTY DEATH RECORDS

Page: 37
File Number: 677
Date of Death: 17 Feb 1871
Date Recorded: 21 May 1872
Name: **William W FINK**
Age: 3m 1d Sex: M
Place of Death: Walton
Cause of Death: Fever
Birthplace: Walton
Residence: Walton
Father: **Byron D FINK**
Mother: **Mary A FINK**

Page: 37
File Number: 700
Date of Death: 20 Dec 1871
Date Recorded: 21 May 1872
Name: **MCGLOCKIN**
Age: new born Sex: F
Place of Death: Walton
Cause of Death: Still born
Birthplace: Walton
Residence: Walton
Father: **Martin McGLOCKIN**
Mother: **Lucy Maria McGLOCKIN**

Page: 37
File Number: 678
Date of Death: 20 Apr 1871
Date Recorded: 21 May 1872
Name: **Henry HORN**
Age: 45y 5m 17d Sex: M
Marital: married
Place of Death: Walton
Cause of Death: Consumption
Birthplace: Pennsylvania
Occupation: Mechanic
Father: **Peter HORN** of PA
Mother: **Barbary HORN**

Page: 37
File Number: 701
Date of Death: 24 Mar 1871
Date Recorded: 21 May 1872
Name: **ETSON**
Age: New Born Sex: F
Place of Death: Walto
Cause of Death: Still born
Birthplace: Walton
Residence: Walton
Father: **Caler ETSON**
Mother: **Elizabeth ETSON**

Page: 37
File Number: 679
Date of Death: 18 Jun 1871
Date Recorded: 21 May 1872
Name: **Grace Bird SESSIONS**
Age: 1y 8d Sex: F
Place of Death: Walton
Cause of Death: Fits
Birthplace: Walton
Residence: Walton
Father: **Ira B SESSIONS**
Mother: **Lucy SESSIONS**

Page: 37
File Number: 702
Date of Death: 2 Mar 1871
Date Recorded: 21 May 1872
Name: **Merritt STEVENS**
Age: 9 days Sex: M
Place of Death: Walton
Cause of Death: Fits
Birthplace: Walton
Residence: Walton
Father: **Chester H. STEVENS**
Mother: **Emily A. STEVENS**

EATON COUNTY DEATH RECORDS

Page: 37
File Number: 703
Date of Death: 12 Jan 1871
Date Recorded: 21 May 1872
Name: **Wilber CASE**
Age: 23y 5m 3d Sex: M
Place of Death: Walton
Cause of Death: Consumption
Birthplace: Ohio
Residence: Walton
Father: **George CASE**
Mother: **Philinda CASE**

TOWNSHIP OF VERMONTVILLE

Page: 37
File Number: 704
Date of Death: 12 Nov 1871
Date Recorded: 24 May 1872
Name: **Mary Jane HAVERSTEN**
Age: 44y 7m 27d Sex: F
Marital: married
Place of Death: Vermontville
Cause of Death: Childbirth
Birthplace: New York
Residence: Vermontville
Occupation: House keeping
Father: **Orius WELLS** (dead)
Mother: **Mary WELLS** (res. Eaton Co)

Page: 38
File Number: 705
Date of Death: 17 June 1871
Date Recorded: 24 May 1872
Name: **Thersey L. WING**
Age: 37y 18d Sex: F
Marital: married
Place of Death: Vermontville
Cause of Death: Consumption
Birthplace: Not known
Residence: Vermontville
Occupation: House keeper
Father: **Dennis SMITH** (Bellevue, MI)
Mother: **Abigal SMITH** (Bellevue, MI)

Page: 38
File Number: 706
Date of Death: 25 Mar 1871
Date Recorded: 24 May 1872
Name: **Alonzo GREEN**
Age: 57y 5d Sex: M
Marital: married
Place of Death: Vermontville
Cause of Death: Newralgia in head
Birthplace: New York
Residence: Vermontville
Occupation: Farmer
Father: **Job GREEN** (of Ohio)
Mother: **Susannah GREEN** (dead)

Page: 38
File Number: 707
Date of Death: 6 Dec 1871
Date Recorded: 24 May 1872
Name: **Charles GUNN**
Age: 3d Sex: M
Place of Death: Vermontville
Cause of Death: Spasms
Birthplace: Vermontville
Residence: Vermontville
Father: **Robert GUNN**
Mother: **Harriet R. GUNN**

Page: 38
File Number: 708
Date of Death: 31 July 1871
Date Recorded: 24 May 1872
Name: **Dora CARY**
Age: 5m 15d Sex: F
Place of Death: Vermontville
Cause of Death: (?) of the bowels
Birthplace: Vermontville
Residence: Mich.
Father: **George W CARY** (Mich)
Mother: **Mary Ann CARY** (Mich)

EATON COUNTY DEATH RECORDS

Page: 38
File Number: 709
Date of Death: 10 June 1871
Date Recorded: 24 May 1872
Name: **Prudence HANER**
Age: 50y 2m 26d Sex: F
Place of Death: Vermontville
Cause of Death: Consumption
Birthplace: Vermont
Residence: Vermontville
Occupation: House keeper
Father: **Daniel Fuller** (dead)
Mother: **Mary Fuller** (dead)

Page: 38
File Number: 710
Date of Death: 7 Oct 1871
Date Recorded: 24 May 1872
Name: **LaFrete McINTYRE**
Age: 1 day Sex: M
Place of Death: Vermontville
Cause of Death: Unknown
Birthplace: Vermontville
Residence: Vermontville
Father: **William McINTYRE** (Mich)
Mother: **Rhemancy McINTYRE** (Mich)

Page: 38
File Number: 711
Date of Death: 26 June 1871
Date Recorded: 24 May 1872
Name: **Abegil S. GRISWOLD**
Age: 54y 18m 15d Sex: F
Place of Death: Vermontville
Cause of Death: Consumption
Birthplace: Vermont
Residence: Vermontville
Occupation: House keeper
Father: **Joseph BASCOM** (dead)
Mother: **Lucretia BASCOM** (dead)

Page: 38
File Number: 712
Date of Death: 17 Apr 1871
Date Recorded:
Name: **Huldah C SPRAGUE**
Age: 66y 6m 14d Sex: F
Marital: married
Place of Death: Vermontville
Cause of Death: Heart disease
Birthplace: New York
Residence: Vermontville
Occupation: House keeper
Father: **Jay CURTIS** (dead)
Mother: **Mary CURTIS** (Mich)

TOWNSHIP OF HAMLIN

Page: 38
File Number: 713
Date of Death: 5 Sept 1871
Date Recorded: 27 May 1872
Name: **Hepsey McDONALD**
Age: 72y Sex: F
Place of Death: Hamlin
Cause of Death: Vavular disease of the heart
Birthplace: Province of New Brunswick
Residence:
Father: Dead
Mother: Dead

Page: 38
File Number: 714
Date of Death: 14 July 1871
Date Recorded: 27 May 1872
Name: **John F. BENNET**
Age: 10m Sex: M
Place of Death: Hamlin
Cause of Death: Chill fever
Birthplace: Hamlin
Residence: Hamlin
Father: **Charles A. Bennet**
Mother: **Lucy M. Bennet**

EATON COUNTY DEATH RECORDS

Page: 38
File Number: 715
Date of Death: 7 April 1871
Date Recorded: 27 May 1872
Name: **Julia A. WEBBER**
Age: 26y 4m 3d Sex: F
Marital: single
Place of Death: Hamlin
Cause of Death: Typhoid Pneumonia
Birthplace: New York
Residence: Hamlin
Father: **Edward WEBBER**
Mother: Dead

Page: 38
File Number: 718
Date of Death: 1 Oct 1871
Date Recorded: 27 May 1872
Name: **Prudence WHEELAN**
Age: 26 Sex: F
Marital: married
Place of Death: Hamlin
Cause of Death: Consumption
Birthplace: Michigan
Residence: Hamlin
Father: **James R. HAINES**
Mother: Dead

Page: 38
File Number: 716
Date of Death: 20 Sept 1871
Date Recorded: 27 May 1872
Name: **Rosella McNELLY**
Age: 10d Sex: F
Place of Death: Hamlin
Cause of Death: not given
Birthplace: Hamlin
Residence: Hamlin
Father: **John McNELLY**
Mother: **Elizabeth McNELLY**

Page: 38
File Number: 719
Date of Death: 28 Oct 1871
Date Recorded: 27 May 1872
Name: **Frankie J. GRANT**
Age: 4y 3m 3d Sex: M
Place of Death: Hamlin
Cause of Death: Congestion of brain
Birthplace: Michigan
Residence: Hamlin
Father: **Hiram GRANT**
Mother: **Susan GRANT**

Page: 38
File Number: 717
Date of Death: 28 Nov 1871
Date Recorded: 27 May 1872
Name: **Abigail McMANUS**
Age: 50y Sex: F
Place of Death: Hamlin
Cause of Death: Dropsy
Birthplace: New York
Residence: Hamlin
Father: **Samuel DAME (NY)**
Mother: Dead

Page: 38
File Number: 720
Date of Death: 28 June 1871
Date Recorded: 27 May 1872
Name: **Viola J. MOORE**
Age: 4y 12d Sex: F
Place of Death: Eaton Rapids
Cause of Death: Scurfula
Birthplace: New York
Residence: Hamlin
Father: **John W MOORE**
Mother: **Mary A MOORE**

The Witch Hunts of Salem

by Vicki L Dukes

Five years after the Salem Witch Trials, one judge and 12 jurors asked for forgiveness.

What had occurred in 1692 tore a small community of Puritans apart. One hundred from Salem to Boston were arrested and a few were hanged or stoned to death on the word of a few very young girls.

What had caused this hysteria? Historians today are still trying to figure that out using old records. We do know, however, the Puritans believed in witch craft; a person could be possessed. The girls in this case were believed to have powers. They called out to a spectra; which was a vision only seen by them that was to represent one of the people who they thought was a witch. It was the spectra not the person that made them scream, convulse and act the way they did. Many believe today, that the girls were acting out and enjoyed the center of attention that was being paid to them. Many of them were too young to realize the consequences of their actions. Spectral evidence was accepted as fact. Fifty five of the accused of over 200 confessed; which the Puritans believed God would judge them.

Eaton County Genealogical Society (ECGS) received an open letter dated February 7, 2007 from **Rosemary Southworth McCarthy**, Battle Creek, MI wanting to share with you her research on the Towne family in Salem during the trials.

She has documented her Towne lineage to **William Towne** and his wife **Joanna Blessing** who were first recorded as landowners in Salem, New England in 1640. **Lydia Town's** father, **Elijah Town, Jr.**, served during the Revolutionary War with the State of Vermont.

Lydia Miriam Town was born 13 August 1779 at Dummerston, Vermont to **Elijah Town, Jr.** and wife **Sarah nee Holton**. Lydia married **Oren Southworth** and they had nine children. They and their sons **James, William, George and Alonzo** were early settlers of Eaton Twp. **Lydia Town Southworth** died 27 Sep 1852 age 73, and is buried (as is Oren) at the South Eaton Cemetery, Eaton Twp., Eaton County, MI.

Lydia Town's ggg-grandfather was **Jacob Towne**. **Jacob** was a brother of three women accused and sentenced as witches in Salem, Massachusetts during the 1692 witch hunts. The sisters were: **Rebecca Towne Nurse, Mary Towne Esty and Sarah Towne Bridges Cloyce**.

Several theories have been considered as the cause of the witchcraft hysteria but the most consistent theory is land boundary disputes first occurring in Essex

The Witch Hunts of Salem

County, Mass. The **Townes, Nurses, and Estys** were all in one way or another involved in land disputes.

Rebecca Towne married **Francis Nurse** and was the mother of eight children. **Rebecca** was a 71 year old widow when she was hung on Gallows Hill in Salem on 19 Jul 1692 (along with five other accused women).

Mary Towne married **Isaac Esty** and was the mother of ten children. **Mary** is noted in the Salem witch trial records for the impassioned plea she made to the court:

"...I question not but your honors to do the utmost of your powers in the discovery and detecting of witchcraft and witches and would not be guilty of innocent blood for the world. But by my own innocence I know you are in the wrong way. The Lord in his infinite mercy direct you in the great work if it be his blessed will that no more innocent blood be shed...."

Mary's plea did not spare her life. She was hung on Gallows Hill on 22 Sep 1692 at the age of 58. But perhaps her prayer that no more innocent blood be shed was answered. **Mary Towne Esty** was the last person who climbed up the ladder to her death. There were no more executions in New England after her death.

Sarah Towned Bridges Cloyce was born after her parents (**William and Joanna Towne**) immigrated to New England. She was baptized in Salem in 1648. **Sarah** first married **Edmund Bridges, Jr.** After his death, **Sarah** married **Peter Cloyce**. She was accused of witchcraft and was jailed but escaped execution. A video, "Three Sovereigns for Sarah" gives a fictional account of Sarah's travails during and after the Salem witch hunts.

Before the trials ended 20 people in Salem and the surrounding areas were executed; nine were condemned but not executed. In Massachusetts nearly 200 others were accused.

Both **Rebecca** and **Mary** might have saved their lives as did many others by confessing that they were practicing witchcraft. Their lives would have been spared but their land would have been forfeited to the King. It must also be recognized that their Christian faith would not allow them to falsely confess to serving the Devil.

Rosemary Southworth McCarthy is 10th generation:

Rosemary Southworth
Charles A Southworth
Charles J Southworth
Alonzo Southworth
Oren Southworth married Lydia Miriam Town
Elijah Town, Jr.

The Witch Hunts of Salem

Elijah Town, Sr.
Israel Town
John Town
Jacob Towne
William Town

For further information, **Rosemary** suggests the following books:

"Currents of Mallice" by Persis McMillen, 1990
"The Descendantgs of William Towne", compiled by E E Towne, 1901
"The Devil in Massachusetts" by Marion Starkey, 1949
"Witchcraft at Salem" by C. Hansen, 1969

Credit must be given to the Towne Family Association and its newsletter, "About Towne".

Resource: Open letter to ECGS from
Rosemary McCarthy, 123 Darragh Drive, Battle Creek, MI 49015

Mary Bliss Parsons

Another very well documented case that started years before the Salem trials was the witch trials of **Mary Bliss Parsons**.

Mary Bliss Parsons, wife of **Cornet Joseph Parsons**, daughter of **Thomas and Margaret Bliss** of Hartford, Ct., both very prominent families, was born in England about 1628 and came to this country with her parents when she was about eight years old. In 1646 she married **Joseph Parsons**, a successful merchant, and went to live in Springfield.

In 1654 **Mary and Joseph** with their eleven children moved to Northampton. They were active in the local church. Local tradition has remembered **Mary** as being "possessed of great beauty and talents, but.....not very amiable.... exclusive in the choice of her associates, andof haughty manners."

In 1656, soon after the Parsons family moved to Northampton, **Joseph Parsons** brought an action for slander against **Sarah Bridgeman**, charging that **Sarah** had accused **Mary**, his wife, of being a witch. This docket was found in Middlesex County Court, dated October 7, 1656.

*The testimony against **Mary Parsons** was that following any disagreement or quarrel between Mary Parsons and any member of the **Bridgeman** family, a fatal disease would seize upon some horse or cow belonging to the **Bridgeman** family. The **Bridgeman** family believed she was exercising a way of revenge. The decision of the court was in favor of Mary Parsons.*

In the years that followed, **Mr. Parsons** prospered ever more greatly, her children grew in numbers but her reputation for witchcraft hung on. Although

The Witch Hunts of Salem

Mary had been acquitted by the courts of witchcraft in 1674, lingering questions about her behavior led many of her neighbors to ongoing suspicions about her and the Parsons family. The whole matter of **Mary** being a witch was renewed in court again in 1679.

Joseph dies in 1683 and **Mary** lives until January 1712. **Mary** was never convicted of witchcraft by the courts but she was never free from local suspicion.

Lineage to Eaton County

Cleone Smith Miller is 10th generation

Her mother: **Ermentrude Martin**

(Born 18 Jun 1901 Eaton Co., died 10 Oct, 1936,
buried Needmore Cemetery, Eaton County)

Grandfather: **Ernest Martin**

(Born 6 Jun 1877 Eaton Co., died 1959,
buried Gresham Cemetery, Eaton County)

G Grandmother: **Helen Allen Cunningham**

GG Grandfather: **Solomon Allen**

(Born 1804 Pittsfield, Berkshire, MA, buried Battle Creek, MI)

GGG Grandfather: **Moses Allen**

(Born 1779 Pittsfield, Berkshire, MA, died 1842)

GGGG Grandfather: **Joseph Allen**

(Born 12 Oct 1735 Northampton, Hampshire County, MA)

5G Grandmother: **Elizabeth Betty Allen**

(Born 25 Mar 1716 Northampton, MA, died 9 Jan 1800
Northampton, MA.)

6G Grandfather: **Noah Parsons**

(Born 15 Aug 1692 Northampton, MA., died 27 Oct 1779
Northampton, MA.)

7G Grandfather: **Joseph Parsons**

(Born 1647 Springfield, Hampton, MA, died 21 Nov 1729)

8G Grandmother: **Mary Bliss Parsons**

(Born 1625 Belstone, Devon England, died 29 Jan 1712
Springfield, Hampton, MA)

Footnote from Mr. Miller:

i have little documented information on **Helen Martin, Cleone's G. Grandmother**, she was Edwin's fourth wife. Her first Husband, **Milton Cunningham**, left for California to find gold and was never heard of again. We think she is buried at Gresham Cemetery. She had a sister, **Sarah**, that graduated from the Chicago School Medicine and practiced medicine in the Charlotte area. Very unusual for a woman at that time. She was referred to by the family as **Auntie Doctor**. Some where in my barn we have a corner cabinet that was Auntie Doctor's

The Witch Hunts of Salem

Mr. Miller goes on to say that **Ernest** was born, lived his entire life, and died on the 100 acre farm in Chester Township, Eaton Co. that his father traded a team of horses, harness, whip and some blankets for, sight unseen about 1844.

Sources:

A special thanks to **James Miller** for sending me this information on **Mary Parsons**. For further information, please check out these web sites:

www.rootsweb.com/~nwa/parsons.html

<http://members.frys.com/~parsons/bio.html>

http://freepages.genealogy.rootsweb.com/~hubbard/NNY_index/parsons.html

<http://ccbit.cs.umass.edu/parsons/hnmockup/home.html>

<http://ccbit.cs.umass.edu/parsons/hnmockup/story.html>

<http://ccbit.cs.umass.edu/parsons/hnmockup/witchcraft.html>

<http://ccbit.cs.umass.edu/parsons/hnmockup/timeline2.html>

<http://ccbit.cs.umass.edu/parsons/hnmockup/background.html>

"1692 Witch Hunt: The Layman's Guide to the Salem Witchcraft Trials", George Malcolm Yool, Heritage Books Inc., 1992.

"Salem Witchcraft and Hawthorne's House of the Seven Gables", Enders A Robinson, Heritage Books Inc., 1992, (originally published in 1930)

Sheila Mott, another ECGS member, has traced several of her husband's ancestors back to the era of the Connecticut witch trials which began much earlier than those in Salem. The earliest incidence in Connecticut can be found in 1647.

Her first families are **John and Joan Carrington** of Wethersfield. On February 20th, 1651 **John and Joan** were indicted and they were found guilty on March 6, 1651. They were both excuted. **Lydia Gilbert**, Windsor was tried in November 1654 and found guilty. There is no known written evidence that she was put to death, but it is believed that she was hanged.

Anthony James Mott

His father: **Leslie Dwight Mott**

(Born 12 Dec 1917 Eaton Co., died 22 Nov 1999 Eaton Co.,
buried Battle Creek, MI.)

The Witch Hunts of Salem

Grandfather: **Laurel Berger Mott**

(Born 22 May 1893, Eaton Co., died 11 Apr 1965 Eaton Co.
buried Olivet Cemetery., Eaton Co.)

G grandfather: **William A Mott**

(Born 24 Jan 1871, Eaton Co., died 22 Aug 1954, Eaton Co.
Buried Olivet Cemetery, Eaton Co.)

GG grandmother: **Clarissa Butterfield**

(Born 6 Sept 1834 Onandaga, NY., died 23 Jan 1911 Eaton Co.,
buried Olivet Cemetery, Eaton Co.)

GGG grandmother: **Lydia Lathroy Conant**

(Born 23 May 1807 in NH, died 31 May 1874 Eaton Co.
buried Olivet Cemetery, Eaton Co.)

GGGG grandmother: **Mary Gilbert**

(Born 28 Oct 1793 in NH, died 7 Jun 1858 Eaton Co.
buried Olivet Cemetery, Eaton Co.)

5 G grandfather: **Thomas Gilbert**

(Born 15 Sept 1743, CT., died 4 Jun 1797, NH)

6 G grandfather: **Samuel Gilbert**

(Born 1 May 1712, MA., died Oct 1774, NH)

7 G grandfather: **Samuel Gilbert**

(Born 5 Feb 1687/88, CT., died 1 May 1760, CT)

8 G grandfather: **Samuel Gilbert**

(Born 5 Aug 1663/64, CT., died 5 Aug 1733, NY)

9 G grandfather: **Jonathan Gilbert**

(Born 1618 England, died 19 Dec 1682 CT.)

10 G grandmother: **Lydia**

(died 1654 or 1655)

The Indictment: **Lydea Gilbert** thou art here indited by that name **of Lydea Gilbert** that not having the feare of god before thy Eyes thou hast of late years or still dust give Entertainment to Sathan the greate Enemy of god and mankind and by his helpe hast killed the Body of **Henry Styles** besides other witchcrafts for which according to the law of god and the Established Law of this commonwealth thou Deservest to Dye.

The Verdict: Ye party above mentioned is found guilty of witchcraft by the Jury.

After the death of his wife, **Thomas Gilbert** sold his place in Windsor to **Thomas Bissell** and retired to **Lieut. John Hollister's** farm at Nayaug, then in the limits of Wethersfield, east of the Connecticut River.

The Witch Hunts of Salem

The lineage from **Anthony Mott to John and Joan Carrington**

Anthony James Mott

Mother: **Wilma Olive Otney**

(Born 17 Mar 1921, Calhoun Co., MI., died 24 Sept 2004
Eaton Co.)

Grandmother: **Vera Mae Estelle**

(Born 24 Jun 1889, Richland Co., ND, died 25 Mar 1968,
Charlotte, MI)

G grandmother: **Mary E Paine**

(Born 24 May 1856, Calhoun Co., MI, died 29 Jan 1892, Eaton Co.)

GG grandmother: **Orvilla Barney**

(Born 25 Jan 1833 Erie Co. NY, died 19 Aug 1906, Eaton Co.)

GGG grandmother: **Ruth Ford**

(Born 29 Jun 1813 NY, died 4 Mar 1905, Charlotte, Eaton Co.)

GGGG grandfather: **Almon Ford**

(Born 17 Apr 1785, died 11 Jun 1865 Calhoun Co., MI)

5G grandmother: **Martha Holcomb**

(Born 11 Jan 1756, CT, died 17 Dec 1846 Erie, NY)

6G grandfather: **Joshua Holcomb**

(Born 2 Feb 1724, died 1784

7G grandfather: **Joshua Holcomb**

(Born 18 Sept 1697, died Nov 1772)

8G grandmother: **Hannah Carrington**

(Born 1675, died 13 May 1708)

9G grandfather: **John Carrington**

10G grandfather: **John Carrington** (died 1651)

10G grandmother: **Joan** (died 1651)

***John** settled in Wethersfield prior to 1643 and his homestead was on the east side of Sandy Lane, just south of **Thomas Standish**. It is likely that **Carrington** was of a somewhat lawless nature, for in March 1648 he was fined 10 pounds for bartering a gun with an Indian.*

It is difficult to find family records of people hung for witchcraft and it seems like some of the records have been concealed. In all, 33 persons are known to have been accused of witchcraft during the latter half of the 17th century when the witchcraft delusion swept CT, 11 of these believed to have been executed.

***John Carrington**, a Wethersfield carpenter, and his (second) wife, **Joan**, were convicted of "familiarity with Satan and works above the course of Nature" and were hanged at Hartford in 1651.*

Murder may be the surest ticket to the death chamber in Connecticut today, but 350 years ago, witchcraft was the crime most likely to result in a death sentence. Connecticut made witchcraft a capital offense as far back as 1642. Between

The Witch Hunts of Salem

1647 to 1663 Connecticut convicted and executed more witches than anywhere else in colonial America.

Thomas Farrar (another ancestor of **Anthony Mott**) was a farmer, and lived in Nahant street. He died 23 Feb 1694. His wife **Elizabeth** died 8 Jan 1680. He married his second wife, **Abigail Collins**, 3 March 1681. He had one son, **Thomas**, who married **Elizabeth Hood** and four daughters: **Hannah, Sarah, Susanna and Elizabeth**. He had a set of twin **Peleg and Mehitabel** born 1660 who died young. **Susanna** married **Joseph Newhall**, son of the **Thomas** who was the first white child born in Lynn. This **Joseph** settle in Lynnfield and had eleven children among them **Samuel**, who was adopted by his uncle **Thomas Farrar**. **Thomas Farrar**, the elder, was familiarly called "old Pharach" and was one of those accused of witchcraft in 1692.

Thomas Farrar was brought before the court at Salem 18 May and it was **Ann Putnam's** deposition who testified against him. He was sent to prison at Boston where he was kept until 2 Nov, more that five months. He was an elderly man, and his son **Thomas Farrar, jun.**, was one of the selectmen this year. He lived in Nahant street, and died 23 Feb 1694.

Anthony Mott's lineage to Thomas Farrar

Anthony James Mott

His father: **Leslie Dwight Mott**

(Born 12 Dec 1917 Eaton Co., died 22 Nov 1999 Eaton Co.,
buried Battle Creek, MI.)

Grandfather: **Laurel Berger Mott**

(Born 22 May 1893, Eaton Co., died 11 Apr 1965 Eaton Co.
buried Olivet Cemetery, Eaton Co.)

G grandfather: **William A Mott**

(Born 24 Jan 1871, Eaton Co., died 22 Aug 1954, Eaton Co.
Buried Olivet Cemetery, Eaton Co.)

GG grandmother: **Clarissa Butterfield**

(Born 6 Sept 1834 Onandaga, NY., died 23 Jan 1911 Eaton Co.,
buried Olivet Cemetery, Eaton Co.)

GGG grandmother: **Lydia Lathroy Conant**

(Born 23 May 1807 in NH, died 31 May 1874 Eaton Co.
buried Olivet Cemetery, Eaton Co.)

GGGG grandmother: **Mary Gilbert**

(Born 28 Oct 1793 in NH, died 7 Jun 1858 Eaton Co.,
buried Olivet Cemetery, Eaton Co.)

5 G grandmother: **Lydia Lathrop**

(Born 15 Aug 1742, died 21 May 1807)

6G grandfather: **Benjamin Lathrop**

(Born 18 Oct 1697 MA, died 16 Jun 1758, Windham CT.)

7G grandmother: **Elizabeth Lathrop**

(Born 1677, died 1763)

The Witch Hunts of Salem

8G grandmother: **Sarah Farrar**
(Born 1647/49, MA died 1712)
9G grandfather: **Thomas Farrar**
10G grandfather: **Thomas Farrar**
(Died 1692/94)

Sources: Research material received from **Sheila Mott**
www.genealogyforum.org/monthlytopic/october/witchct.php
<http://womenhistory.blogspot.com/2008/02/lydia-gilbert.html>
<http://womenhistory.blogspot.com/2008/03/joan-carrington.html>
<http://archiver.rootsweb.ancestry.com/th/read/Carington/1997-12/0881180545>
"History of Lynn, Essex County of MA 1629 - 1864" by Alonzo Lewis and James Newhall, Published at the bookstore of George C Herbert.
"The Gilbert Family Descendants of Thomas Gilbert" by Homer Worthington Brainard, Harold Simeon Gilbert and Clarence Almon Torrey, New Haven, CT 1953, pgs 17 - 19.

*With our thoughts we make the world.
With our actions we make history.
We believe what we tell ourselves....
If you expect to fail; you probably will.
Successful people ask for help.
Find some one who inspires you.....?
Set a goal this month to find one new ancestor.*

*You never will know who you might find just
around the corner or on the next page until you
search for them!*

By Vicki L Dukes

GAR Post 40
Charlotte, Michigan

In the beginning of these records the post was very good about sending into the government quarterly Muster Roll Reports. As the years past the reports were sent in June and December; then just before the file ends the reports were only yearly. You will also notice that as the years past, the death rate per year increases.

No.	Name	Age	Place of Birth	Residence	Occupation or Date of Death
-----	------	-----	----------------	-----------	-----------------------------

1890

209	Vickers	Geo L	48	MI	Charlotte	Carpenter
24	Carter	Adam J				Died Oct 7 th
213	Christian	Christopher	41	Ing. Co.	Charlotte	Printer

1891

217	Cogsdale	C D		Transferred from Post 4		
218	Bingham	A S	65	NY	Charlotte	Farmer
226	Trip	Jerome	69	NY	Charlotte	Farmer
227	Bechman	Wm	48	Eaton Co	Charlotte	Farmer

1892

27	Green	Andrew				Died 1892
231	Ellis	F W	52	NY	Kalamo	Farmer
232	Gardner	Henry	47	OH	Charlotte	Farmer
233	Miller	Wesley	53	OH	Chester	Farmer
234	Rathbon	Jas	46	MI	Charlotte	Laborer
9	Skinner	R W				Died 1892
235	Brouse	Henry	47	OH	Benton	Farmer
236	Syn	Wm	51	NY	Kalamo	Farmer
237	???	Chris H	46	MI	Carmel	Farmer

1893

	Wichard	Josiah				
	Foot	David M				
24	Collins	James	52	NY	Charlotte	

GAR Post 40
Charlotte, Michigan

No.	Name	Age	Place of Birth	Residence	Occupation or Date of Death
-----	------	-----	----------------	-----------	-----------------------------

1894

180	Faulkner	John A			Died
243	Rathburn	?	47		
244	Faulhen	W P	52		
245	Ripley	Manford B	64	Carmel	Farmer
246	Elias	Landers	55	PA	Carmel
247	Hutchens	Giles J	53	NY	Carmel
248	Ranser (?)	John G	56	Germany	Charlotte
249	Fay	Thomas W	48		
250	Hall	Lewis	57		
251	Pollard	Wm H	60	England	Carmel
252	Jones	James S	50	NY	Farmer

1895

253	Guest	Wheat	50	Ohio	Chester
254	Holbrook	S C	75	VT	Charlotte
255	Pierce	Wm R	52	OH	Charlotte

1896

Filney	A G	52	VT	Charlotte
Holswein (?)	Smith C		MI	Charlotte

1897

Culp	A J				Died
Stewart	Benj				Died before June
Vail	Aaron	53	NJ	Eaton	
Roush	J M		OH	Muliken	
Heitiele	Gerome B			Charlotte	
Stewart	Benj				Died
Williams	M B				Died before Dec
Culp	A J				Died Oct

1898

Hartwell	Frank	57	NY	Charlotte
Klock	Peter	67	NY	Charlotte

**GAR Post 40
Charlotte, Michigan**

No.	Name	Age	Place of Birth	Residence	Occupation or Date of Death
-----	------	-----	----------------	-----------	-----------------------------

1898

Smith	John		Ontario	Charlotte	
Warner	R L	48	MI	Charlotte	

1899

Warren	Henry R				Died Oct
Miller	Jacob				Died Nov
McAlpine	Frank	52	NY	Charlotte	
Willis	Robert	57	OH	Charlotte	

1900

Fansey	David				Died April 23 rd
Sluth	Jas R				Died Feb 19 th
Hieke	Wm P	58	NY		
Hull	Chas	55	NY		
William	Chas E	56	VT		
Heath	Chas	57	NY		
Kellogg	Geo E	59	PA		
Gardner	Geo L	53	OH		
Young	Chas	56	MD		
William	Jeremiah	70	NY		
Haslett	Jas	59	OH		
Mason	C C	64			
Whitcomb	Alonso	60	Wis		
McNaughton	Peter	54	Canada		
Lambert	C Y	70	OH		
Youngs	E D	53	MI		
Johnson	Chas	70	NY		
Barkyle	Wm G	63			
Root	Geo R	63	OH		
Drake	Nelson	53	MI		
Reynolds	Jas J	55	Ind		
White	Manley	55	MI		
Unser	Geo W				Died
Barrett	C S				Died Aug
Mack	William				Died Oct

GAR Post 40
Charlotte, Michigan

No.	Name	Age	Place of Birth	Residence	Occupation or Date of Death
-----	------	-----	----------------	-----------	-----------------------------

1901

	Roth	Wm	58	MI	Charlotte	
	Jessuf	Geo	63	France	Charlotte	
	Butler	Chas	55	France	Charlotte	
135	Johnson	Peter R				Died
	Herbert	F W				Died July
	Killmin	Jermiah				Died Aug 22 nd
	Becker	Daniel				Died Oct 21 st
	Rowley	Lafayette				Died Dec 16 th
	Shimgam	Edwin	59	NY	Charlotte	

1902

	Conley	E D				Died
	Foreman	Geo				Died
	Overmyer	F M	56	OH	Charlotte	
	Milburn	Wm	56	London	Charlotte	
	Hiccox	Cyrus	55	NY	Charlotte	
	Hagerman	John J	54	OH	Charlotte	
	Young	Charles M				Died

1903

	Upright	David				Died March 1 st
	Richardson	Chas. B	58	NY	Charlotte	
	Bishop	Guilford	64	OH	Charlotte	
	Peters	Theo C	60	NY	Charlotte	
	Lohr	Warren	57	NY	Charlotte	
	Whitcomb	A C				Died July
	Liverman	A D				Died Aug 8 th
	Patterson	P D				Died Sept 26 th
	Larsen	John				Died Oct 12 th
	Bennett	Charles				Died Nov

1904

	Bidwell	George	62	MI	Carmel
	Church	Charles	72	NY	Charlotte
	Upright	Jacob	64	Germany	Charlotte

**GAR Post 40
Charlotte, Michigan**

No.	Name	Age	Place of Birth	Residence	Occupation or Date of Death
-----	------	-----	----------------	-----------	-----------------------------

1904

Metsinger	Wm	60	NY	Charlotte	
Frank	John	62	OH	Charlotte	
Sullivan	Geo	68	MI	Charlotte	
Pollock	Samuel				Died May 19 th
Powers	W A				Died May 2 nd
Parish	Alex				Died June 5 th
Boyair	Jas				Died Oct
???maine	D L				Died July

1905

Champlin	Neil	68	RI	Charlotte	
Curtis	James				Died March 31 st
McAlpine	Frank				Died April 28 th
Perkins	J P				Died May 31 st
Russ	Nathan		NY	Charlotte	
Bishop	Guilford				Died Nov 16 th

1906

Vail	Aaron				Died Feb 13 th
Vantassel	Oliver				Died March 6 th
Haner	Jacob	61	MI	Charlotte	
O'Neil	Justin	64	NY	Charlotte	
Leonard	John	60	England	Charlotte	
Holbrook	L C				Died Nov 26 th
Conley	Levi				Died Dec 20 th

1907

Benchman	Adelbert	65	OH	Charlotte	
Moyers	Peter	73		Charlotte	
Tilingurt	Wm	67	OH		
Umberger	James	68	PA		
Davison	Harvey	61	NY		
Fust	Alfred				Died March 4 th

**GAR Post 40
Charlotte, Michigan**

No.	Name	Age	Place of Birth	Residence	Occupation or Date of Death
-----	------	-----	----------------	-----------	-----------------------------

1907

	Griffiny	Sheldan			Died Mar 14 th
	Church	Chas			Died May 4 th
	Russ	Nathan			Died May 19 th
	Houselsberg	Wm	65	Holland	Charlotte
	Homelsberg				
	Bottourley	James H	66	England	Charlotte
	Swith	John O			Died July 2 nd
	Mason	Christopher			Died Aug 10 th
	Williams	Charles E			Died Nov 3 rd
	Stocking	Charles H			Died Nov 10 th

1908

	Chaffull	Charles E	63	MI	Charlotte
	Woodard	Amos	78	NY	Charlotte
	Ellis	James			Died Feb 12 th
	Klock	Peter			Died Feb 18 th
	Markhaus	Orin			Died March 31 st
	Seachrist	Jacob	60	PA	Charlotte
	Woodard	Amos			Died Sept 20 th

1909

	Sweet	Samuel	73	NY	Carmel
	Cronk	David C	67	OH	Charlotte
	Clafir	Albert B	63	MI	Benton
	Winchell	Nathan D			Died Jan. 16 th
	May	John B			Died Feb. 26 th
	Wall	Merrick			Died May 23 rd
	Fisher	Wm M	64	PA	Kalamo
	Soloman	Joshua M			Died July 5 th
	Wall	Charles			Died Nov 26 th

GAR Post 40
Charlotte, Michigan

No.	Name	Age	Place of Birth	Residence	Occupation or Date of Death
<u>1910</u>					
	Clappell	Chat E			Died Sept 6 th
	Miller	Wesley D			Died Nov 3 rd
	Wagerman	Noah D	80	NY	Charlotte
	Dell	Geo S	72	PA	Charlotte
	Berringer	Christopher			Died Dec 24 th 1909
	Wilson	Daniel			Died Jan
<u>1911</u>					
	Allen	Giles			Died Feb 8 th
	Wafimas	Noah D			
	Titingar	Wm			Died May 22 nd
	Bigley	John			Died June
	Harmingtin	J T	72	NY	Charlotte
	?	Franklin	68	MI	Charlotte
	Hartwich	J B	75	NY	Charlotte
	Ridle	Chas	73	NY	Charlotte
	Tunna	?			Died Sept
	Frank	John			Died Oct
	Rath	Wm			Died 1911
<u>1912</u>					
	Tolbert	Michael	66	Grand Rapids	Charlotte
	Hall	Wm	68	NY	Charlotte
	Bryant	John	67	England	Charlotte
	Marter	Charles	66	NY	Charlotte
	Smith	Jacob	83	PA	Charlotte
	Rulison	Thadius			Died Jan
	Storris				
	(Storrie?)	Wm	70	VT	Charlotte
	Spears	Burton H	68	MI	Charlotte
	Beardsley	G S	71	OH	Charlotte
	Dick	Isaac	75	VA	Battle Creek
	Ripley	Manford			Died Aug
	Dell	Geo			Died Nov

GAR Post 40
Charlotte, Michigan

No.	Name	Age	Place of Birth	Residence	Occupation or Date of Death
-----	------	-----	----------------	-----------	-----------------------------

1913

	McConoughy Wm				Died Jan 9 th
	Kellogg Geo E				Died Jan 17 th
	Griest Wheat				Died March
	Fleury Alnise				Died April
	Ainger Daniel				Died April
	Caren Samuel				Died May
	Gillingham James	84	OH	Charlotte	
	Miller Wm				Died Oct 4 th
	Butler Charles				Died Oct 14 th
	Koplinger Jonas				Died Oct 17 th
	McNaughton Peter				Died Dec 11 th
	Tolbert Michael				Died Dec 24 th

1914

	Berg James	73	OH	Charlotte	
	Noble Emos	79	MI	Charlotte	
	Gillman Charles	69	NY	Charlotte	
	Sirell L A				Died Feb 11 th
	Johnson C S			Old Age	Died June
	Beardsley G S			Heart	Died May 30 th
	Flicks Wm P			Heart	Died June 22 nd
	Gates Geo	68	MI	Charlotte	
	Fisher Lucius	72	NY	Charlotte	
	Parkhurst J D	81	MI	Charlotte	
	Throop Silas	70	NY	Charlotte	
	Ackey Albert	67	MI	Charlotte	
	Bouerman Adelbert			Paralysis	Died 1914
	Fisher Wm			Stomach trouble	Died Sept
	Upright Jacob			Paralysis	Died Dec
	Lightmon Charles			Dropsey	Died Nov
	Smith Jacob			Complications	Died 1914

1915

	Nye Albert	73	OH	Charlotte	
	Polard Wil				Died Jan 4 th

**GAR Post 40
Charlotte, Michigan**

No.	Name	Age	Place of Birth	Residence	Occupation or Date of Death
-----	------	-----	----------------	-----------	-----------------------------

1915

	Ash	Austin			Died March 13 th
	Harmon	Sidney			Died March 30 th
	Seacrist	Jacob			Died June 21 st
	Davison	Harvey			Died 1915
	Hurtwele	Jerome			Died
	Champlain	Acil			Died Oct 23 rd
	Nuggett	Geo			Died Nov 13 th
	Waddell	Harrison			Died Dec 5 th
	Hessing	Geo	75	Kalamo	Charlotte

1916

	Motter	William	77	OH	Charlotte
	Ells	Charles			Died Jan 9 th
	Riddle	Charles			Died April 30 th
	Robbins	Seth			Died May 6 th
	Rathbun	James			Died Jun 2 nd
	Beckman	Wm			Died June 13 th
	Atto	William B	72	OH	Charlotte
	McKenzie	Alexander			Died July 13 th
	Peters	Theodore			Died July 24 th
	Fauklin	Washington			Died Aug 8 th
	Metsinger	Wm			Died Dec 25 th
	Smith	John B			Died Dec 28 th

1917

	Thomas	Eugene			Died Jan 28 th
	Spears	Barton			Died Feb 7 th
	Berry	James			Died April
	Vickery	John			Died July
	Crosin	Chas			Died Sept 15 th
	Stoser (?)	Wm D			Died Oct 13 th

GAR Post 40
Charlotte, Michigan

No.	Name	Age	Place of Birth	Residence	Occupation or Date of Death
-----	------	-----	----------------	-----------	-----------------------------

1918

Bradley	Noble	75	VT	Charlotte	
Marshall	Edward	73	OH	Charlotte	

1920

Squires	Roswell	74	NY	Charlotte	
Brown	John				
Fox	M B	77	MI	Charlotte	
Evarts	Geo W		MI	Charlotte	
Sternberg	J C				Died March 6 th
Hall	Louis A				Died May 7 th
Hulett	O P				Died April 16 th
Richardson	Chas				Died July 26 th
Otto	Berry				Died Nov 8 th
Fisher	L D				Died Nov 7 th

1921

OFFICERS

Young	Eugene				
Hubbard	George				
Suttler Sr.	George				
Lohr	Warren				
Warren	F G				
Smart	Asa				
Jordan	William				
Gardner	Henry				
Gates	George				
Thomas	William				
Dunning	Evander				
Smith	E D				Died Feb 23 rd
Vickery	Dan F				Died March 14 th
Upright	George T				Died April 15 th
Butler	L S				Died May 22 nd
Herrington	L F				Died June 20 th
Whitmore	C P				Died Sept 20 th
Herrington	George				Died Dec 10 th

GAR Post 40
Charlotte, Michigan

No.	Name	Age	Place of Birth	Residence	Occupation or Date of Death
<u>1921</u>					
	Ciaflin	A B			Died Dec 20 th
<u>1922</u>					
	Brown	John			Died Jan 23 rd
	Ottney	John J			Died June 8 th
	Brouse	Henry			Died June 30 th
<u>1923</u>					
	Parkhurst	J D			Died Jan 5 th
	Webben	J H			Died
	Hill	Byron			Died Feb 11 th
	Harrwood	W H			Died Feb 12 th
	Merrick	Rufus			Died Feb 12 th
	Young	E D			Died Oct 16 th
	Huber	Daniel			Died Jan 22 nd
	Christian	C G			Died Oct 3 rd
	Woodbury	Geo			Died May 1 st
	Sander	Judson			Died April 2 nd
<u>1924</u>					
	Cronk	Daniel			Died June 7 th
	Rowley	Geo W			Died March 9 th
	Throop	Silas			Died Dec 14 th
<u>1925</u>					
	Umburger	James			Died Feb 3 rd
	William	Morris B			Died April 12 th
	Suttler Sr.	George			Died May 24 th
	Hungerford	William			Died May 25 th
	Jordan	William			Died Aug 13 th
	Bryant	John			Died Aug

GAR Post 40
Charlotte, Michigan

No.	Name	Age	Place of Birth	Residence	Occupation or Date of Death
-----	------	-----	----------------	-----------	-----------------------------

1926

	Gates	George			Died Oct 1 st
--	-------	--------	--	--	--------------------------

1927

	Quantrell	Charles			Died March 16 th
	Pangler	Charles			Died April 25 th
	Bennett	Uriel M			Died Oct 12 th
	May	Sayles K			Died Oct 30 th
	Warren	Fred G			Died Oct 30 th
	Hall	Marcus			Died Dec 15 th

I did not abstract all the information; if you find an ancestor among these records, it would be worth your time to look at the microfilm in the State Archives or check out the web site below.

After the 1927 Muster Roll information there were several copies of letters that were sent in with the monthly reports.

A Web site pertaining to the Michigan GAR Posts is a must to check out:

www.suvcwmi.org/gar

What's New At The ECGS Library

by Sharlene Thuma, librarian, tsthuma@juno.com

Note: call numbers are subject to change.

Thanks to everyone who generously donated the following materials to our library.
It is very much appreciated by E.C.G.S. and our researchers.

* = a gift donated by....

USA:

Book- Ancestral Roots of Certain American Colonists Who Came to America before 1700, 1964, 359pp., 8th edition *Paul E. Miller.....**200.USA.12**

MICHIGAN:

Yearbooks- Wolverine, MI State University 1964 & 1965 (2 books)
*Paul E. Miller.....**SC.333.MS.1**

Barry Co.-

Book- Barry County Veterans: World War II Era, by Barry Co. Historical Society, 2002, 459 pp., includes many black & white photos of veterans *Joan Glasgow....**308.16**

Calhoun Co.-

Book- Albion in the 20th Century, by Frank Passic, 2002, 128 pp.
*ECGS purchase.....**313.21**

Book- Growing Up in Albion, by Frank Passic, 2006, 128 pp., index printed from Internet *ECGS purchase.....**313.22**

Yearbooks- Albionian, Albion College, 1985-1987 (4 books)
*Shannon Rathbun.....**SC.313.AL.1**

Eaton Co.-

Book- Powers Highway Bridge, computer printout photos, compiled by Larry Randall
*Larry Randall.....**Brookfield.2**

Book- Carrier Cemetery, Brookfield Twp., includes computer photo printouts showing the renovation & headstones, compiled by Larry Randall *Larry Randall.....**Cemeteries**

Directory- 1904 Charlotte City Directory, publ. by Davis & Loomis, 122pp.
*Louis Haley.....**Directories**

Book- VFW National Home, c.1940's, pictorial (some identification noted with pen)
*Lyle W. French.....**Eaton Rapids.16**

Book- Our Home, VFW National Home, 1948, pictorial with identifying captions

*Lyle W. French.....**Eaton Rapids.17**

Map- Plat of Dickerson Drain, Windsor Twp., Apr. 1931, shows landowners

*Paul E. Miller.....**M.200.WI.1**

Scrapbook- contains many obits, mostly Eaton Rapids (also Springport) area, indexed
*Willard Library.....**Scrapbook.65**

Photos- Evans School, computer photo printouts of the exterior, 2008, Bellevue Twp.
*Ann Case.....**SC.501.EV.1**

Book- Assessor Book in Account with Teacher & Incidental Expense Fund, 1866-1920, Perkey? School, Eaton Twp.
*Sandy Hennings.....**SC.507.PE.1**

Yearbook- Eatonian, 1961, Eaton Rapids High School *Paul E. Miller....**SC.508.EH.1**

Yearbooks- Hound Tales, Eaton Rapids Junior High School, 1985-1987 (2 books)
*Shannon Rathbun.....**SC.508.EJ.1**

Newspapers- Dimondale News, 1898-1965, also Aug. 16, 1946 to Apr. 7, 1967
*Paul E. Miller/Thelma Caruss.....**Vault #3**

Paper- Perkey School, list of students with teacher, Nina MAY, Eaton Twp. 191(?), 1-8 grades, handwritten by a child
*Sandy Hennings.....**VF.628**

Postcards- 9 of the Charlotte area: 1885 Courthouse, Sheriff's Residence, train depots, Main St., Fountain, Methodist Church, looking south on Cochran, & Waterworks Park
*Kristine Clements.....**VF.631**

NORTH CAROLINA:

Book- North Carolina Genealogical Research, by Geo. K. Schweitzer, 1996, 193pp. *Martha Raths **234.4**

SURNAMES:

Book- Letters Home, written by E.E. HORNER *Marion Keesler.....**Journal.27**

What's New At The ECGS Library (cont.)

by Sharlene Thuma, librarian, tsthuma@juno.com

Note: call numbers are subject to change.

Thanks to everyone who generously donated the following materials to our library.
It is very much appreciated by E.C.G.S. and our researchers.

- Photo- *Israel LINDLY*, black & white portrait with information *Marion Keesler.....**P.597**
- Photo- *Archie McDonald*, Barry-Eaton Cos., MI Circuit Judge, very large black & white portrait *Reed's Studio.....**P.598.os**
- Book- *DUDLEY Genealogies*, by Dean Dudley, 1848, 144pp.
*Paul E. Miller.....**900.DU.06**
- Book- *As I Heard the Story*, by Nathan DUDLEY, 1853, 23pp.
*Paul E. Miller.....**900.DU.07**
- Book- *DYER Genealogy*, by Grace Dyer & Alice Jarman, 53pp.
*Paul E. Miller.....**900.DY.02**
- Book- *Descendants of Thomas (or GAMBRELL) GAMBILL*
*Paul E. Miller.....**900.GA.02**
- Book- *Descendants of Hans HAUER of Neureuth, Germany: A HOWER History*, by Charles C. Hower, 1974, 336pp.
*Paul E. Miller.....**900.HO.06**
- Book- *More HOWERS*, by Charles C. Hower & Agnes Hower Wells
*Paul E. Miller.....**900.HO.07**
- Book- *Brief History of Charles Brewster HUBBELL*, by Adelbert Lloyd Hubbell, 1943? *Paul E. Miller.....**900.HU.06**
- Book- *JARMAN*, by Grace Dyer & Alice Jarman, 58pp.
*Paul E. Miller.....**900.JA.02**
- Book- *JOHNSON, Alexander Franky*, widow's pension records, 29pp.
*Paul E. Miller.....**900.JO.03**
- Book- *LEWIS Family in North Carolina 1892-1976* *Paul E. Miller.....**900.LE.01**
- Book- *Pioneer LEWIS Families*, vol. 1-3, by Michael L. Cook, 1978 & 1981
*Paul E. Miller.....**900.LE.02**
- Book- *John LOTHROPP: A Puritan Biography & Genealogy*, by Richard Price, 1984, 38pp.
*Paul E. Miller.....**900.LO.01**
- Book- *McCURDY Pioneers of North America*, by Clyde W. McCurdy, 1990, 147pp. *Paul E. Miller.....**900.MC.01**
- Book- *Grandpa Tell Me More*, by Stephen MEAD, 1995, 128pp. (life experiences of the author) *Phyllis Whidden.....**900.ME.04**
- Group sheets- on *Bulah SOULES*,
*Phyllis Whidden.....**900.SO.01**
- Book- *Genealogy of the WELSH & HYATT Families of Maryland & Their Kin*, by Luther W. Welch, 1928, 22pp.
*Paul E. Miller.....**900.WE.15**
- Photo- *Paul UPRIGHT*, as an infant, black & white image, mother is Lillian RORABECK
*Phyllis Whidden.....**P.599**
- Photos- *SEEKELL family*, 31 loose black & white photos with 2 albums, Eaton Rapids
*Frank Passic.....**P.600.os**
- Photos- *McARTHUR family*, many loose photos, primarily black & white
*Lena Wells.....**P.601.os**
- Scrapbook- *George Elmer McARTHUR*, letters, news clippings, etc.
*Lena Wells.....**Scrapbook.75**
- Diploma- *Kenneth Murville RATHBUN*, Eaton Rapids High School, 1947
*Shannon Rathbun.....**VF.629**
- Photo- *children of Frank Lusk COOK*, (actually a photocopy)
*Lyle W. French.....**VF.632**
- Papers- *CRABTREE family*, Seth Wesley Crabtree & Nettie HAUN's marriage certificate, Crabtree family Bible page, & Charles Crabtree's Civil War papers
*Carol A. Richardson.....**VF.633**

Eaton County Quest Issue #64 INDEX

			Bennett	Charles	30
			Bennett	Uriel M	38
			Bentley	Chas. A.	7
?	Franklin	33	Benton	Lillie	5
???	Chris H	27	Berg	James	34
???maine	D L	31	Berringer	Christopher	33
Abbott	Mary	7	Berry	James	35
Ackey	Albert	34	Betts	Bertha	5
Adams	Glenn W.	4	Betz	Charles	12
Adams	Pearl M.	4	Bidwell	George	30
Ainger	Daniel	34	Bigley	John	33
Allen	C.G.	7	Bigley	Lena	4
Allen	Elizabeth Betty	21	Bingham	A S	27
Allen	Giles	33	Bishop	Guilford	30, 31
Allen	Joseph	21	Bissell	Thomas	23
Allen	Moses	21	Blashfield	Jas	7
Allen	Solomon	21	Blessing	Joanna	18
Althouse	John	6	Bliss	Margaret	20
Ash	Austin	35	Bliss	Mary	20
Atto	William B	35	Bliss	Thomas	20
Backus	Herman	8	Bolosk	Etta	5
Baird	William	7	Borbier	Alonzo	7
Baker	Mary Jean	5, 11	Borough	S. J.	6
Bare	M. A. & M. D.	7	Bottourley	James H	32
Barkyle	Wm G	29	Bouerman	Adelbert	34
Barney	Orvilla	24	Boyair	Jas	31
Barrett	C S	29	Bradley	Noble	36
Bascom	Joseph	16	Brainard	Homer Worthington	26
Bascom	Lucretia	16	Bridgeman	Sarah	20
Bear	Anson	7	Bridges	Edmund	19
Beardsley	G S	33, 34	Bridges	Sarah	18, 19
Bechman	Wm	27	Brouse	Henry	27, 37
Becker	Daniel	30	Brown	Hattie	5
Beckman	J. C.	7	Brown	John	36, 37
Beckman	Wm	35	Brownal	Dora	13
Bell	Rick	9	Brownell	Chancy	13
Bement	Edwin	6	Brownell	Jenett	13
Benchman	Adelbert	31	Brunger	Chas. W.	7
Bennet	Charles A.	16	Brunger	Edgar	6
Bennet	John F.	16	Brunger	Sylvania	7
Bennet	Lucy M.	16	Brunger	Thomas	7
			Bryant	William	6
			Bryant	John	33
			Butler	John	37
			Butler	Charles	30, 34
				L S	36

Eaton County Quest Issue #64
INDEX

Butterfield	Clarissa	23, 25	Cronk	David C	32
Capwell	John	6	Crosin	Chas	35
Caren	Samuel	34	Culp	A J	28
Carpenter	Emily	7	Cunningham	Helen Allen	21
Carrington	Hannah	24	Cunningham	Milton	21
Carrington	Joan	22, 24	Curtis	James	31
Carrington	John	22, 24	Curtis	Jay	16
Carter	Adam J	27	Curtis	Mary	16
Caruss	Thelma	39	D. W. G.		6
Cary	Dora	15	Dame	Samuel	17
Cary	George W.	15	Davis	Merlon	6
Cary	Mary Ann	15	Davison	Harvey	31, 35
Case	Ann	39	Deane & McCull	Atty's	7
Case	George	15	Dell	Geo	33
Case	Philinda	15	Dell	Geo S	33
Case	Wilber	15	Depew	Samuel	7
Chaffull	Charles E	32	Dick	Isaac	33
Challender	Thos	7	Dingler	Jacob	6
Champlain	Acil	35	Doctor	Auntee	21
Champlin	Neil	31	Dodge	Olive	5
Chipman	Austin	8	Dodge	Varda R.	4, 5
Christian	C G	37	Drake	Nelson	29
Christian	Christopher	27	Dray	Andrews	5
Church	Charles	30	Dudley	Merritt	6
Church	Chas	32	Dukes	Vicki L	1, 2, 9
Clafin	A B	37	Dunn	Jas.	8
Clafir	Albert B	32	Dunning	Edward	1
Clappell	Chat E	33	Dunning	Evander	36
Clark	Jas M.	7	Earl	B. F.	6
Clay	C. L. & H. L.	7	Earl	C. H.	7
Clay	John	7	Earl	Ceyland	7
Clements	Kristine	39	Earl	Estella	6
Cloyce	Peter	19	Earl	Wm.	7
Cloyce	Sarah	18, 19	Ebel	John	7
Cogsdale	C D	27	Edwards	Jane	6
Cogsdill	Ellen P.	8	Edwards	Mary A.	7
Cole	Nora	4	Edwards	Z.E.	7
Collins	Abigail	25	Elias	Landers	28
Collins	James	27	Elkins	E.S.	7
Collins	Jim	1	Elkins	J.B. & E.S.	6
Conant	Lydia Lathroy	23, 25	Ellis	F W	27
Conley	E D	30	Ellis	James	32
Conley	Levi	31	Ells	Charles	35
Coolidge	Calvin	5	Estelice	Vera Mae	24
Copenhaver	Sherry	1	Esty	Isaac	19
Cousino	Marcy	1	Esty	Mary	18, 19
Crist	Elmer	6	Etson	Caler	14
Cronk	Daniel	37	Etson	Elizabeth	14

Eaton County Quest Issue #64 INDEX

Etson		14	Gates	George	38
Evarts	Geo W	36	Geer	Phila	7
Ewing	John W.	6	Gilbert	Harold Simeon	26
Exner	W.	4	Gilbert	Jonathan	23
Eystone	Mary	7	Gilbert	Lydia	22, 23
Fansey	David	29	Gilbert	Mary	23, 25
Farrar	Hannah	25	Gilbert	Samuel	23
Farrar	Mehitabel	25	Gilbert	Thomas	23
Farrar	Peleg	25	Gilburt	Lydea	23
Farrar	Sarah	25, 26	Gillingham	James	34
Farrar	Susanna	25	Gillman	Charles	34
Farrar	Thomas	25, 26	Glasgow	Jo	1
Faulkin	Washington	35	Glasgow	Joan	39
Faulhen	W P	28	Glenn	Christopher	8
Faulkner	John A	28	Glenn	G.	6
Fay	Thomas W	28	Goodman	Daisy	5
Fees	Christian	6	Goodman	Lucille	5
Figg	S. A.	6	Goostrey	Betty	1
Filney	A G	28	Gragg	John H.	13
Fink	Byron D.	14	Gragg	Martha	13
Fink	Mary A.	14	Gragg	Robert Clinton	13
Fink	William W.	14	Granger	Sylvester (est.)	8
Fisher	L D	36	Granger	Sylvester H. (est.)	6
Fisher	Lucius	34	Grant	Frankie J.	17
Fisher	Wm	34	Grant	Hiram	17
Fisher	Wm M	32	Grant	Susan	17
Fleming	Wm. F.	7	Green	Alonzo	15
Fleury	Alnise	34	Green	Andrew	27
Flicks	Wm P	34	Green	Job	15
Foot	David M	27	Green	Susannah	15
Ford	Almon	24	Griest	Wheat	34
Ford	Frank	7	Griffin	Morton & Ella	7
Ford	Ruth	24	Griffiny	Sheldan	32
Foreman	Geo	30	Griswold	Abegil S.	16
Foster	Darwin	6	Guest	Wheat	28
Fox	M B	36	Guilford	Irving	6
Frank	John	31, 33	Guilford	Irving M.	6
French	Lyle W.	39, 40	Guilford	Ransom	6
Fuller	Daniel	16	Gunn	Charles	15
Fuller	Etta	5	Gunn	Harriet R.	15
Fuller	Etta V.	5	Gunn	Robert	15
Fuller	Mary	16	Hageman	John J	30
Fust	Alfred	31	Haines	James R.	17
Gales	Geo. W.	6	Halbert	Harrison	7
Gardner	Geo L	29	Haley	Louis	39
Gardner	Henry	27, 36	Hall	Lewis	28
Gates	Geo	34	Hall	Louis A	36
Gates	George	36	Hall	Marcus	38

Eaton County Quest Issue #64
INDEX

Hall	Wm	33	Hubbard	George	36
Hancock	John	7	Huber	Daniel	37
Haner	Jacob	31	Huddleson	Floy	7
Haner	Prudence	16	Hulett	O P	36
Harmgtin	J T	33	Hull	Chas	29
Harmon	Sidney	35	Hults	Peter	8
Harned	A. O.	7	Hungerford	William	37
Harwood	W H	37	Hurtwele	Jerome	35
Hartwell	Frank	28	Hutchens	Giles J	28
Hartwich	J B	33	Jessuf	Geo	30
Haslett	Jas	29	Jewell/Jerrett	Lucy C.	13
Hatch	Edwin	7	Johnson	C S	34
Haversten	Mary Jane	15	Johnson	Chas	29
Hazelton	Harriett	7	Johnson	Peter R	30
Heath	Chas	29	Jones	James S	28
Heitiele	Gerome B	28	Jordan	William	36, 37
Hennings	Phebe Clara	5	Joslin	L. M.	6
Hennings	Sandy	39	Judson	Susan	6
Henning's	Family	4	Keesler	Marion	39, 40
Herbert	F W	30	Kelley	J. C.	7
Herbert	George C.	26	Kelley	Lucia E.	7
Herrington	George	36	Kellogg	Geo E	29, 34
Herrington	L F	36	Kenyon	Daniel	6
Hessing	Geo	35	Killimin	Jermiah	30
Hiccox	Cyrus	30	Klock	Peter	28, 32
Hieke	Wm P	29	Koplinger	Jonas	34
Hill	Byron	37	Krebs	T. E.	5
Hinman	M. A.	6	L. T.		7
Hitchcock	W. L.	7	Lake	O. B.	11
Hitchcock	Wm.	7	Lambert	C Y	29
Hodges	Clarence	1	Lankton	D. Eugene	8
Hodges	Shirley	1	Larsen	John	30
Holbrook	L C	31	Lathrop	Benjamin	25
Holbrook	S C	28	Lathrop	Elizabeth	25
Holcomb	Ira P.	8	Lathrop	Lydia	25
Holcomb	Joshua	24	Leonard	John	31
Holcomb	Martha	24	Lester	John	6
Hollister	John	23	Lewis	Alonzo	26
Holmes	Sylvania	7	Lewis	Lucinda	6
Holswein (?)	Smith C	28	Lightmon	Charles	34
Holton	Sarah nee	18	Liverman	A D	30
Homelsberg		32	Lock	Geo.	8
Hood	Elizabeth	25	Lohr	Mary E.	4
Hoople	Geo. R.	8	Lohr	Warren	30, 36
Horn	Barbary	14	Lunore	Frank	7
Horn	Henry	14	Mack	William	29
Horn	Peter	14	Malby	C.S. & wife	6
Houselsberg	Wm	32	Mann	Bessie	5

Eaton County Quest Issue #64
INDEX

Markhaus	Orin	32	Mitchell	W. A.	6
Marshall	Edward	36	Mitchell	W. Z.	8
Marter	Charles	33	Moon	Marlin	7
Martin	Ermentrude	21	Moore	John W.	17
Martin	Ernest	21	Moore	Mary A.	17
Martin	Helen	21	Moore	Viola J.	17
Martin	Josephine	7	Mosher	Edgar T & Wife	6
Maskle/Markle	C.	7	Mott	Anthony	24, 25
Maskle/Markle	John	7	Mott	Laurel Berger	23
Mason	C C	29	Mott	Leslie Dwight	22, 25
Mason	Christopher	32	Mott	Sheila	1, 22, 26
Maxson	I. Horatio	7	Mott	William A.	23, 25
May	John B	32	Motter	William	35
May	Sayles K	38	Moyers	Peter	31
McAlpine	Frank	29	Mullins		5
McAlpine	Frank	31	Murray	Andrew	7
McCarthy	Rosemary	18, 19, 20	Murray	John	7
McConoughy	Wm	34	Nelson	Cole	6
McDonald	Hepsey	16	Newhall	James	26
McGlockin	Lucy Maria	14	Newth	Madalilne	4, 5
McGlockin	Martin	14	Nicholas	J. P.	8
McGlockin		14	Nicholas	Martin	8
McIntyre	LaFrete	16	Nichols	Geo W. & Wife	7
McIntyre	Rhemancy	16	Nichols	Truman	7
McIntyre	William	16	Nidy	Walter	4
McKenzie	Alexander	35	Nixon	Edwin	8
McManus	Abigail	17	Nixon	L. J.	8
McMullin	Edward M.	7	Noble	Emos	34
McMullin	Jennie	7	Noecker	Oliver	7
McMullin	Joseph	7	Noecker	Theopholis	7
McNaughton	Peter	29, 34	Norton	Inez	4
McNelly	Elizabeth	17	Norton	Susan A.	4
McNelly	John	17	Nottingham	H.	7
McNelly	Rosella	17	Nuggett	Geo	35
Merrick	Rufus	37	Nurse	Francis	19
Metsinger	Wm	31, 35	Nurse	Rebecca	18
Milburn	Wm	30	Nye	Albert	34
Miller	Cleone (Smith)	21	OFFICERS		36
Miller	Jacob	29	O'Neil	J. H.	6
Miller	James	21, 22	O'Neil	Justin	31
Miller	Paul	39, 40	Oteney	Wilma Olive	24
Miller	Wesley	27	Ottney	John J	37
Miller	Wesley D	33	Otto	Berry	36
Miller	Wm	34	Otto	Joseph	8
Mitchell	Alfred	7	Overmyer	F M	30
Mitchell	Andrew	6	Paine	Mary E.	24
Mitchell	Chas L.	6	Pangler	Charles	38
Mitchell	Sarah	7	Pardee	L.	7

Eaton County Quest Issue #64
INDEX

Parish	Alex	31	Rathburn	?	28
Parish	Theriane	4	Raths	Martha	39
Parkhurst	J D	34, 37	Reed	C.	5
Parsons	Cornet Joseph	20	Reynolds	Jas J	29
Parsons	Joseph	21	Reynolds	Louisa J.	6
Parsons	Mary	20	Richardson	C. B.	7
Parsons	Mary	21, 22	Richardson	Carol A	40
Parsons	Mary Bliss	21	Richardson	Chas	36
Parsons	Noah	21	Richardson	Chas. B	30
Passic	Frank	40	Riddle	Charles	35
Patterson	P D	30	Ridle	Chas	33
Peirce	Burton	13	Ripley	Manford	33
Pelton	W. A.	6	Ripley	Manford B	28
Perkins	J P	31	Rishel	David	4
Peters	Theo C	30	Rishel	Vern	4
Peters	Theodore	35	Rishel	Vern E.	4
Pickford	Mary	5	Robbins	Seth	35
Pierce	Ancil Henry	13	Robinson	Enders A.	22
Pierce	Margaret Elizabeth	13	Root	Geo R	29
Pierce	Wm R	28	Rosier	A. H.	7
Platt	Lillie M.	5	Rosier	R. C.	7
Polard	Wil	34	Rosier	R. C.	7
Polhamus	Betty	1	Roth	Edward	6
Polhamus	Susan	1	Roth	Wm	30
Pollard	Wm H	28	Roush	J M	28
Pollock	Samuel	31	Rowley	Geo W	37
Potter	Geo N.	8	Rowley	Lafayette	30
Powers	W A	31	Rulison	Thadius	33
Preston	Chas M.	7, 8	Russ	Nathan	31, 32
Quale	Addie Clare	6	Salsbury	E. A. & E. J.	6
Quantrell	A. B.	8	Sander	Judson	37
Quantrell	Charles	38	Sattler	John	7
Quantrell	Laural L.	8	Sattler	Martha	7
Randall	Anna Bell	4	Sattler	Martin	6
Randall	Austin P.	4	Schultz	Frederick	6
Randall	Clarence	4	Schultz	Henry	6
Randall	Earl	4	Seachrist	Jacob	32
Randall	Elon	4	Seacrist	Jacob	35
Randall	Glen	4	Sessions	Grace Bird	14
Randall	Josephne Amaretta	4	Sessions	Ira B.	14
Randall	Larry	4, 39	Sessions	Lucy	14
Randall	Lela	4	Sharp	Richard	6
Randall	Olive Ada	4	Sherman	Mary	6
Ranser (?)	John G	28	Sherman	Ransom	7
Rath	Wm	33	Sherman	Thomas	7
Rathbon	Jas	27	Shetenhelm	Ben	4
Rathbun	James	35	Shimgam	Edwin	30
Rathbun	Shannon	39, 40	Shirey	Mary	4

Eaton County Quest Issue #64 INDEX

Shirey	Mary Ellen	4	Stevens	Emily A.	14
Shoall	Jacob	6	Stevens	Merritt	14
Sirell	L A	34	Stewart	Benj	28
Skinner	G. D.	6	Stocking	Charles H	32
Skinner	R W	27	Storris	Wm	33
Skinner	Rebecca	7	Stoser (?)	Wm D	35
Skinner (life lease)	Perry & Betsey	7	Strange	Daniel	8
Slayton	Myron	13	Strange	John S.	8
Slayton	Myron Wesley	13	Styles	Henry	23
Slayton	Rebecca	13	Sullivan	Geo	31
Sluth	Jas R	29	Suttler Sr.	George	36, 37
Smart	Asa	36	Sweet	Samuel	32
Smith	Abigal	15	Swith	John O	32
Smith	Analilne	6	Syn	Wm	27
Smith	Barbara	1	Tanner	Maria	6
Smith	C.W. & J.C.	7	Taylor	I.S.	7
Smith	Dennis	15	Taylor	Maureen	10
Smith	E D	36	Thomas	Eugene	35
Smith	Ira	6	Thomas	M. V.	7, 8
Smith	J.C.	7	Thomas	William	36
Smith	Jacob	33, 34	Throop	Silas	34, 37
Smith	John	29	Thuma	Sharlene	1
Smith	John B	35	Tilingurt	Wm	31
Smith	Mabel A.	5	Titingar	Wm	33
Smith	Mary	13	Tolbert	Michael	33, 34
Smith	Stephen F.	1	Torrey	Clarence Almon	26
Snyder	Edna	4	Town	Elijah Jr.	18
Snyder	Geo O.	6	Town	Elijah Sr.	20
Soloman	Joshua M	32	Town	Israel	20
Southworth	Alonzo	18	Town	John	20
Southworth	Alonzo	19	Town	Lydia Miriam	18, 19
Southworth	Charles A.	19	Town	William	20
Southworth	Charles J.	19	Town	Elijah Jr.	20
Southworth	George	18	Town	Lydia	18
Southworth	James	18	Towne	Jacob	18, 20
Southworth	Oren	18, 19	Towne	Mary	18, 19
Southworth	Rosemary	18, 19	Towne	Rebecca	18, 19
Southworth	William	18	Towne	Sarah	18
Spears	Barton	35	Towne	William	18
Spears	Burton H	33	Trip	Jerome	27
Sprague	Huldah C.	16	Trumble	L. C.	6
Squires	Roswell	36	Tubbs	Orrin	4
Stack	N	6	Tunna	?	33
Standish	Miles	6	Umberger	James	31, 37
Standish	Thomas	24	Unser	Geo W	29
Stark	J. H.	6	Upright	David	30
Sternberg	J C	36	Upright	George T	36
Stevens	Chester H.	14	Upright	Jacob	30, 34

Eaton County Quest Issue #64
INDEX

Vail	Aaron	28, 31	Woodard	Amos	32
VanAlstine	G. L.	6	Woodbury	Geo	37
VanAlstine	Geo W. & Wife	6	Woods	W. C.	6
Vantassel	Oliver	31	Wythe	Chas. W.	6
Vickers	Geo L.	27	Yool	George Malcolm	22
Vickery	Dan F	36	Young	Charles M	30
Vickery	John	35	Young	Chas	29
Vorce	E. B.	6	Young	E D	37
Waddell	Harrison	35	Young	Eugene	36
Wagerman	Noah D	33	Youngs	E D	29
Waldron	B. E. (est.)	7		Mary	11
Wall	Charles	32			
Wall	Merrick	32			
Walsh	J. H.	6			
Walsh	John H	6			
Ward	Mrs. Charles	11			
Warner	R L	29			
Warren	F G	36			
Warren	Fred G	38			
Warren	Henry R	29			
Watson	G B.	6			
Webben	J H	37			
Webber	Edward	17			
Webber	Julia A.	17			
Wells	Lena	40			
Wells	Mary	15			
Wells	Orius	15			
Wheelan	Prudence	17			
Wheeler	Beulah	11			
Whidden	Phyllis	40			
Whitcomb	A C	30			
Whitcomb	Alonso	29			
White	Manley	29			
Whitmore	C P	36			
Wichard	Josiah	27			
William	Chas E	29			
William	James	7			
William	Jeremiah	29			
William	Morris B	37			
Williams	Charles E	32			
Williams	M B	28			
Willis	Robert	29			
Wilson	Daniel	33			
Winchell	Nathan D	32			
Windslow	Eva	4			
Wing	Thersey L.	15			
Wollpert	H. J.	6			
Wollpert	Luella O.	6			