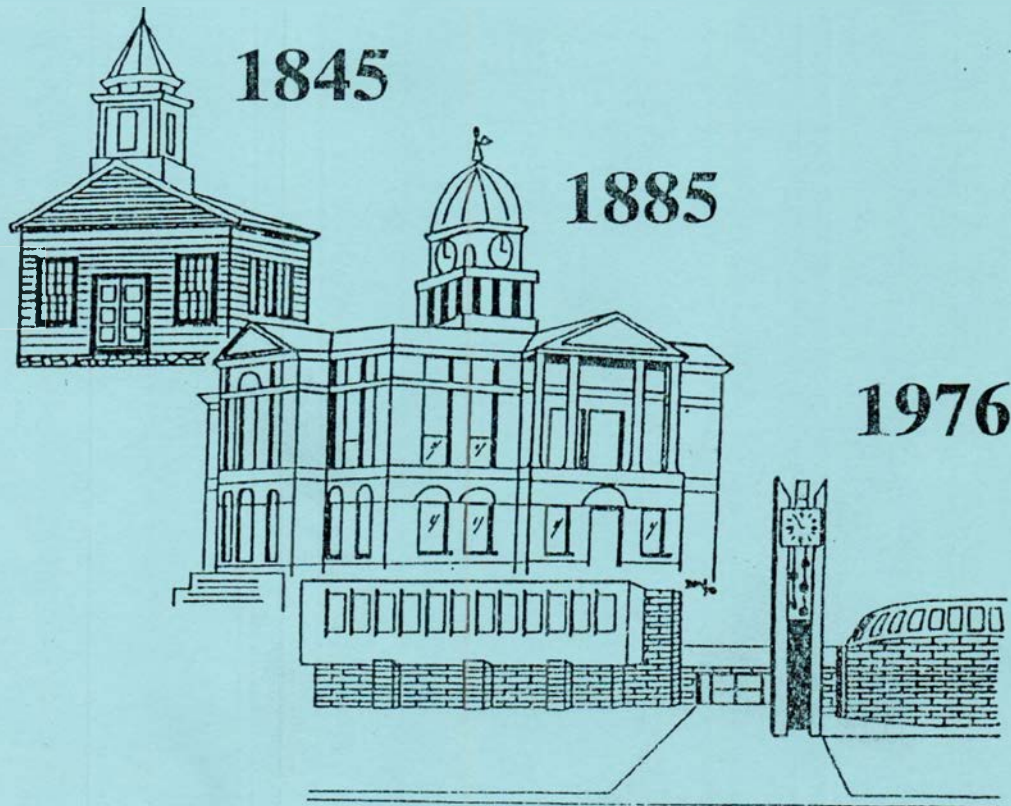


ISSN 1075-881X

Eaton County Quest

Quarterly Magazine for the Eaton County Genealogical Society
Eaton County, Michigan



ISSUE #24

OCTOBER-DECEMBER 1996

Eaton County Quest

Issue #24

October-December 1996

Contents

The Farm Journal Rural Directory of Eaton County (Continued from #23)	140
History of Brookfield (Continued from #23) by: J.C. Sherman Copied by D. Halsey	146
Obituary Corner Copied by D. Halsey	150
Eaton County Marriages Abstracted by: Betty Goostrey & Betty Polhamus	152
Eaton County Naturalization Index Copied by Drouscella Perry Halsey	155
Dimondale High School Commencement 1893 donated by Edith Engel	156
Bible Records of Benjamin & Rebecca Wise	158
Mulliken High School Class of 1905 donated by Dr. Forrest D. Baribeau	166
Merit Card from ECGS VF-47	167
Pedigree Charts of Doris Arlene Raidel Patterson	168
Pedigree Charts of Laverne William Root	171
Photocopies of Swift School 1935-36-37 donated by Robert D. Haigh	174-176
Photocopies donated by Edith Engel	177-179
Queries	180
Quilt Report by Sher Brown	181-182
What's New in our Library by Sharlene Kelley Thuma	183-184
President's Letter by Sher Brown	185
Editor's Page	
Index	

Published every January, April, July and October
Membership & Subscriptions rates per year (begins with January)
\$15.00 for membership with quarterly publication
\$17.00 for family membership with quarterly publication
(Memberships mid year receive all publications)
\$5.00 for membership without quarterly publication
\$10.00 for family membership without quarterly publication
All memberships have the ability to rent microfilm from the American Genealogical
Lending Library (AGLL)
\$4.50 plus tax & \$2.00 postage for single or back issues of "Eaton County Quest"

Material for publication in the "Eaton County Quest" can be sent to
Barbara Puffenberger, P.O. Box 337, Charlotte, Michigan 48813-0337.
Include written permission to publish original material. If
submitting previously published material, you must obtain the author's written permission
for reprint. The "Eaton County Quest" assumes no responsibility for errors in contributed
material. Material can be returned to the submitter on request.

Editor

Barbara Green Puffenberger

Contributors to this Issue

Dr. Forrest D. Baribeau	Sher Brown
Edith Engel	Betty Goostrey
Robert D. Haigh	Drouscella Halsey
Doris Arlene Patterson	Laverne William Root
Sharlene Kelley Thuma	

Eaton County Genealogical Society, Inc. -1996 Officals-

President-Sher Brown
Vice-President-Vicki Dukes
Treasurer- Nancy Jourden
Corresponding & Membership Secretary-Drouscella Halsey
Recording Secretary-Debra Eddy
MI Gen. Council Delegates-Jeannine Parker & Betty Polhamus
Librarian-Sharlene Thuma
Historian-Esther Hale
Publicity-Susan Polhamus
FGS Delegate-Shirley Hodges

THE FARM JOURNAL ILLUSTRATED

RURAL DIRECTORY

OF

EATON COUNTY

MICHIGAN

(With a Complete Road Map of the County)



COPYRIGHT, 1916

By WILMER ATKINSON COMPANY

PUBLISHED BY

WILMER ATKINSON COMPANY

PHILADELPHIA

1916

#24 ECQ-Page 140

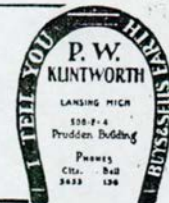
GRAND LEDGE

- Sawyer, Loren chair packer bds 221 E Scott St.
- Saxton, John S. (Ida) stone mason O H&L 502 Kent St.
- Schavey, Archie (Myrtie) chauffeur O H&L 226 Clinton St Ind tel.
- Schavcy, Earl auto salesman 404 Jenne St Ind tel.
- SCHAVEY, WM. (Ola) 6 ch implement dealer 404 W Lincoln Ave Ind tel. See adv.
- Schilz, E. A. (Marian) 2 ch physician & surgeon O H&L 207 E Jefferson St B & Ind tels.
- Schoff, Elmer (Eva) 2 ch laborer T 130 Perry St Ind tel.
- SCHOMAKER, A. B. (Rachel) 1 ch drugs & groceries 226 W Jefferson St Ind tel. See adv.
- Schonberger, J. Harry (Catherine) general manager Crawford Chair Factory T 312 Mineral St.
- Schuart, D. (Eva) 1 ch chauffeur T 418 Clinton St.
- Sebring, Albert (Jennie) 1 ch deputy sheriff & marshall O H&L 521 W Jefferson St Ind tel.
- Sedelmaier, John (Julia) 8 ch kilaburner T 917 Jenne St.
- Sedelmaier, John, Jr. (Margaret) fireman T 223 N Bridge St.
- Sessions, E. Porter livery T 427 Taylor St Ind tel.
- Seymour, Albert D. (Leura) 8 ch farmer T 302 Union St.
- Shaddock, Levi V. (Adelaide) 2 ch farmer O H&L 520 W Front St Ind tel.
- Shaffer, Geo. E. (Christina) 5 ch grocery clerk T 125 E Lincoln Ave.
- Shaffer, William E. (Emma) 1 ch stationary engineer T 208 West St.
- Shafley, Mrs. Zilpha 4 ch O 219 Madison St.
- Shane, Charles jeweler & engraver 508 Pleasant St Ind tel.
- SHANE, D. D. (Marguerite) jewelry 124 W Lincoln Ave Ind tel. See adv.
- Shane, Lamoine clerk 508 Pleasant St Ind tel.
- Shane, L. B. (Maude) 2 ch laborer T 201 Ledge St.
- Shane, Willard (Anna) 2 ch optometrist O 410 Harrison St Ind tel.
- Shane, Willis (Minnie) 3 ch tel trouble man O H&L 508 Pleasant St Ind tel.
- Shaw, Henry W. (Elizabeth H.) 3 ch painter T 828 W Jefferson St.
- Shay, Louis (Carrie) moulder T 421 Wright St.
- Shearer, C. C. (Nellie) 2 ch editor T 108 W Lincoln Ave Ind tel.
- Sheets, Mrs. Rosetta 1 ch O H&L 124 E Scott St.
- Shepard, Frank (Erma) 2 ch laborer O H&L 627 W Front St.
- Shepard, Fred (Edith) 9 ch laborer T 222 E River St.
- Shepard, Glen laborer bds 627 W Front St.
- Shepard, John laborer bds 627 W Front St.
- Shipman, Miss Emily assistant post mistress bds 210 W Jefferson St Ind tel.
- Shipman, Mrs. E. D. 1 ch bds 210 W Jefferson St Ind tel.
- Shipman, J. C. (Mae) 3 ch laborer T 462 W Main St.
- Shoal, Jacob (Jennie) 3 ch T 410 Jackson St Ind tel.
- Shuart, D. C. Wolverine Garage 315-319 S Bridge St.
- Shuart, Ford (Stella) garage T 220 Harrison St Ind tel.
- Shulters, Ed. clerk bds 221 E Scott St.
- Sickels, John (Alice) 2 ch nursery agent O H&L 421 E Scott St Ind tel.
- Siegel, Mrs. Ella M. T 410 Clinton St Ind tel.
- Sien, Miss Laura bookkeeper bds 127 W Jefferson St Ind tel.
- Simmons, Claude (Marjorie) 1 ch laborer T 623 W Main St.
- Simmons, Harley C. (Essie) 3 ch laborer T 526 Taylor St Ind tel.
- Simmons, Wm. (Ethel) 4 ch laborer T 136 E River St.
- Simons, Alton (Lavancia) 1 ch florist T 527 Spring St.
- Simons, Burt B. (Katherine) grocer O H&L 414 E Jefferson St Ind tel.
- Simons, Frank (Gertrude) clerk & bookkeeper T 321 South St.
- Simons, Sheridan (Jessie M.) 1 ch dairyman O H&L 601 W Jefferson St Ind tel.
- Simpson, Rolland (Zella) clerk T 339 W Jefferson St.
- Simpson, Lester (Myrtle) 3 ch cabinet-maker O H&L 317 Franklin St.
- Sisco, Ellis (Blanche) 2 ch freight office T 117 Jenne St Ind tel.
- Smitch, Frank farmer bds 406 N Bridge St.
- Smith, Mrs. A. E. 4 ch O H&L 112 W Lincoln Ave.
- Smith, Mrs. Betsey O H&L 308 E Jefferson St.
- Smith, Mrs. Eva 2 ch O H&L 412 E Scott St Ind tel.
- Smith, E. B. (Kate A.) shoe repairer O H&L 726 W Jefferson St.
- Smith, Frank R. (Carrie) laborer O H&L 607 Liberty St.

FARMERS' DIRECTORY

- Smith, Geo. (Eliza) 2 ch laborer O H&L 327 Franklin St.
 Smith, J. R. (Myrtilla) finisher bds 515 North St.
 Smith, Mark M. (Nina) night watchman T 320 N Bridge St.
 Smith, Oscar 19 ch finisher T 515 North St.
 Smith, Stephen (Hattie) ret O 323 South St.
 SMITH, W. B. (Ida) 2 ch cash bargain store T 501 Taylor St Ind tel. See adv.
 Snyder, Lorin J. (Nettie) 3 ch carpenter & gardener O H&L 723 DeGroff St Ind tel.
 Soles, Fred upholsterer bds 221 E Scott St.
 Soper, J. Mason (Mary) grocer O H&L 325 W Jefferson St Ind tel.
 Southworth, Mrs. Helen M. T 709 S Bridge St.
 Spears, Carini (Marjorie) 2 ch mill hand T 118 W Main St.
 Spears, Mrs. Eliza 4 ch dry goods O H&L 207 Russell St.
 Spence, W. C. (Orpha) 3 ch laborer T 600 Lamson St.
 Spencer, Forest W. (Myrta) 2 ch shoe merchant O H&L 312 Jackson St Ind tel.
 Spencer, Fred. (Elsie) P M lunch stand T 160 McMullen St.
 Spencer, James H. (Nancy) 2 ch Clay Prod Co O H&L 328 Jackson St Ind tel.
 Spencer, Joseph (Anna) laborer T 655 W Front St.
 Spence, J. R. (Clara) professor of music T 600 Taylor St.
 Spennay, C. H. (Emma) barber & pool room O H&L 466 Booth St.
 Spicer, T. H. (Aldora) 5 ch laborer O H&L 502 E Scott St Ind tel.
 Spooner, Bert (Evelyn) mechanic O H&L 648 Spring St.
 Sprague, Mrs. Betsey E. O H&L 615 W Jefferson St Ind tel.
 Stambaugh, Joe (Dora) 2 ch butcher T 319 Lamson St.
 Stanka, A. G. (Edith Mae) physician & surgeon O H&L 503 E Jefferson St B & Ind tels.
 Stanton, Edwin (Bessie) 1 ch book-keeper O 303 Pleasant St.
 Stanton, Mrs. Ida 2 ch T 303 W Front St.
 Stanton, Miss Ilma 303 W Front St.
 Stark, Mrs. Charles O H&L 506 Kent St.
 Stark, George W. (Margaret) 7 ch contractor & builder T 227 Ingersoll St.
 Stark, Hiram (Salina) laborer O H&L 156 McMullen St.
 Stark, John H. (Fannie) 2 ch ret O H&L 831 DeGroff St.
 STARK, MILES E. (Mabel) 2 ch clothing O 225 W Scott St Ind tel. See adv.
 Steffner, W. H. (Amelia) 1 ch ret O H&L 503 E Jefferson St.
 Stillson, W. E. (Hazel) laborer T 321 Pleasant St.
 Stokes, Mrs. David 421 Taylor St.
 STOKES, GEO. E. furniture & undertaking 204 W Jefferson St B & Ind tel. See adv.
 Stoney, Wm. J. (Edith) kila burner O H&L 519 Liberty St Ind tel.
 Stover, Francis E. (Blanche A.) 4 ch foreman at chair factory T 527 W Front St Ind tel.
 Stratton, Harry electrician bds 231 E River St Ind tel.
 Streeter, Mrs. Alice O H&L 400 E Jefferson St.
 Streeter, Hiram (Lucile) 1 ch machinist O H&L 318 E Jefferson St Ind tel.
 Streeter, Marvin L. auto salesman bds 219 E Lincoln Ave Ind tel.
 Streeter, N. J. (Blanche) 3 ch groceries & notions O H&L 219 E Lincoln Ave Ind tel.
 Streeter, Miss Ruth 219 E Lincoln Ave.
 Strobel, Wm. E. (Ruah M.) undertaker 428 E Lincoln Ave B & Ind tel.
 Strouse, Chas. (Emma) 2 ch laborer T Wright St rear.
 Strouse, Ralph (Gladys) 2 ch driver T 210 1/2 N Bridge St.
 Sturdevant, Mrs. Cynthia A. 2 ch O H&L 214 Madison St.
 Sullivan, Miss Anna bds 318 Spring St.

FARMS FOR SALE



GRAND LEDGE

Sullivan, G. W. (Mary) ret O 318 Spring St.

Summers, J. D. (Augusta) 3 ch sec & treas Baker Clay O H&L 520 E Jefferson St Ind tel.

Sutherland, Elmer (Ida) ret O H&L 109 E Lincoln Ave.

Sutherland, Mrs. Huldah 1 ch O H&L 509 W Jefferson St Ind tel.

Sutherland, Mrs. Lerna 1 ch T 609 W Jefferson St Ind tel.

Sutherland, Lyman A. (Louisa K.) farmer O H&L 401 Jones St Ind tel.

Sutherland, Orvel laborer bds 641 W Jefferson St.

Swathwood, Albert O laborer bds 622 W Main St.

Swathwood, Orla O. (Rachel A.) 9 ch brick mason T 622 W Main St.

SWEET, A. J. P O Box 98.

Sweet, Miss Maritta bds 301 1/2 S Bridge St Ind tel.

Sweet, Willard (Minnie) 8 ch carpenter O H&L 328 Kent St Ind tel.

Taber, Frank A. (Ettie) 5 ch manager Clay Product O H&L 327 Jackson St B tel.

Taber, Frank A., Jr. student 327 Jackson St.

Tabor, Mrs. A. J. 2 ch ret O H&L 211 Franklin St Ind tel.

Taylor, Clyde (Orma) 2 ch laborer O H&L 215 Mineral St.

Taylor, David (Julia) 4 ch ret O H&L 320 W Main St.

Taylor, Eli (Elizabeth) 2 ch grocer O H&L 114 E Front St Ind tel.

Taylor, Mrs. Pearl M. 847 W Jefferson St.

Taylor, Roy (Mabel) 2 ch miller O H&L 218 Washington St W.

Taylor, Wellington (Clara) 2 ch laborer T 427 Pleasant St.

Teachout, Claude G. (Mable) 1 ch trouble man G L Tel Co T 214 Maple St Ind tel.

Temam, George (Ellen) 1 ch carpenter O 231 E Scott St.

TEMAN, L. prop of The Temam Bazaar Co. See adv.

Temam, Tebe clerk bds 824 DeGroff St.

TEMAN, W. B. (Louisa) 1 ch manager of The Temam Bazaar Co T 824 DeGroff St. See adv.

Thebo, Edward (Juliette) 2 ch laborer O H&L 751 E Jefferson St Ind tel.

Thomas, Edgar (Glada) carpenter O H&L 527 Jones St.

Thomas, Fred. O 420 W Jefferson St Ind tel.

Thomas, Mark 1 ch ret O 420 W Jefferson St Ind tel.

Thompson, Chas. (Daisy) 3 ch laborer O H&L 214 W Lincoln Ave Ind tel.

Thornbury, Mrs. Ed. 6 ch T 315 Madison St Ind tel.

Thornbury, E. laborer T 315 Madison St Ind tel.

Thornbury, Ralph (Mary) 4 ch night watchman O 413 Madison St.

Thornton, Mrs. T. F. 2 ch T 111 W Lincoln Ave Ind tel.

TICE, Mrs. GEO.

Tiggelman, Birney (Tillie) 3 ch commercial traveler T 202 W Jefferson St.

Timple, Jacob T. (Bella H.) 5 ch laborer T 202 W Main St.

Tingay, Mrs. Mary ret bds 403 N Bridge St.

Tingay, William (Myrtle) 3 ch stationery engineer O H&L 176 McMullen St Ind tel.

Tinkham, J. C. (Marie) auto agent O H&L 115 Clinton St.

Tinkham, W. H. planing mill 502 Clinton St.

Timney, Clark laborer 217 Fleming St.

Timney, Mrs. Jennie 5 ch bean picker T 229 1/2 N Bridge St.

Toaz, Clarence H. (Rosa) 3 ch blacksmith O H&L 321 Lamson St Ind tel.

Toaz, Mrs. T. J. O H&L 214 West St Ind tel.

Toaz, W. H. ret O H&L 321 Lamson St Ind tel.

Towl, B. E. kilnsetter T 716 W Jefferson St.

Towner, Fendish bookkeeper bds 216 W Scott St Ind tel.

Towner, Harry bank cashier bds 216 W Scott St Ind tel.

Towner, J. I. (Hattie) agt T 216 W Scott St Ind tel.

Townsend, T. G. (Rachel M.) 2 ch cigar manufacturer T 408 E Scott St.

Tracy, Charles (Florence) 1 ch laborer T 318 Madison St.

Tracy, Mrs. Clara C. ret O H&L 318 Madison St.

Trautman, Miss Marie J. bookkeeper bds 221 E Scott St Ind tel.

Treat, W. F. (Louise) 1 ch paperhanger & painter 1637 Jennie St.

TREECE, HENRY (Jennie) 1 ch laborer O H&L 439 W Main St.

Trowbridge, Frank (Emily) 2 ch painter & paperhanger O H&L 634 Smith St Ind tel.

Tubbs, L. C. (Nettie W.) 1 ch agent for Standard Oil Co O H&L 233 W Front St Ind tel.

FARMERS' DIRECTORY

- Tucker, Miss Alice 326 E Jefferson St.
Tucker, C. J. (Francis) 1 ch real estate & insurance O H&L 326 E Jefferson St Ind tel.
Turnbull, Mrs. Emma O H&L 315 W Jefferson St.
Turner, Mrs. Maria E. ret T 348 W Jefferson St.
Tyler, Rice A. (Pearl) 7 ch laborer T 847 W Jefferson St.
Tyler, Robert S. (Laura) 4 ch carpenter T 622 W Front St.
Underwood, John (Helen) 1 ch fireman T 804 W Jefferson St Ind tel.
Valentine, Ben 3 ch freight elevator man at factory O H&L 216 Jackson St Ind tel.
Valentine, John (Alta) 1 ch band sawyer T 608 Pleasant St.
Valentine, Roy (Lucella) cabinet maker O H&L 409 Jones St Ind tel.
Van Alstyne, James (Minnie) 1 ch laborer O H&L 416 Jenne St.
Vanderbilt, Walter W. (Jessie) 1 ch automobile agt O 203 W Main St Ind tel.
Vanderbilt, Wm. T. (Ella) 3 ch O H&L 327 Taylor St Ind tel.
Van Horn, Ben (Mary) 3 ch machinist O H&L 463 Union St.
VAN HORN, GEO. H. (Flora) 4 ch meat market T 529 Park St Ind tel. See adv.
Van Horn, Irene M. teacher 529 Park St Ind tel.
Van Houten, Forest (Grace) finisher T 312 N Bridge St Ind tel.
Van Ness, Mrs. Myra O 362 S Clinton St Ind tel.
Vaughn, Alex (Erma) 3 ch section hand T 409 Wright St.
Vetter, Henry (Frances) 3 ch ret T 311 Washington St W.
Vetter, John (Minnie) 3 ch foreman at Am Sewer Pipe T 411 S Bridge St.
Wager, Harry (Maude) 2 ch gas burning T 223 Lamson St.
Waggoner, Mrs. Bertha bds 233 Union St.
Wagner, John (Jane) 6 ch laborer T 504 Jefferson St.
Wagner, Mrs. J. L. 1 ch music teacher O H&L 505 Pleasant St Ind tel.
Waldo, Chas. E. 1 ch ret 418 E Scott St Ind tel.
Waldo, D. M. (Ella) veterinarian T 400 S Bridge St.
Waldo, Mrs. L. P. 3 ch O H&L 319 E Lincoln St Ind tel.
Waldron, Mrs. Nettie 1 ch telephone operator bds 457 Union St B tel.
Walker, Geo. W. (Mary) 3 ch ret O H&L 304 E Main St.
Wallace, Ward (Katherine) finisher T 731 Clinton St Ind tel.
Walls, Ralph Waldo (Minnie C.) 2 ch laborer T 601 W Front St.
Walrous, Mrs. Lura 2 ch T 314 E Main St.
Walsh, J. C. (Tuez) 2 ch ret O H&L 303 Franklin St Ind tel.
Walter, C. E. (Hattie) 5 ch laborer O H&L 510 W Main St.
Wareham, Fred (Mary) 1 ch clerk O H&L 302 E Jefferson St Ind tel.
Wareham, John carpenter & joiner O H&L 415 Pleasant St Ind tel.
Ward, Fay (Maria) 1 ch brick mason O H&L 533 W Front St B tel.
Ward, Henry 3 ch laborer O H&L 403 Wright St.
Watkins, Wm. (Mary E.) 1 ch laborer O H&L 720 Willow St Ind tel.
Watson, Claude (Marian) electrician T 111 Washington St W Ind tel.
Watson, Ellsworth (Eva) 1 ch laborer T 631 W Main St.
Watson, E. C. (Flora E.) 5 ch farmer O 7a H 815 W Jefferson St Ind tel.
Watson, Floyd (Roxie) 2 ch laborer T 205 W River St.
Watson, Geo. (Addie) grocer T 219 W Lincoln Ave Ind tel.
Watson, Grey (Goldie) 3 ch chauffeur T 427 Jackson St Ind tel.
Watson, John H. laborer O H&L 520 Green St.
Watson, Mrs. Lolo O H&L 146 E River St.
Watson, Manson (Sarah) 1 ch laborer O H&L 705 Maple St.
Watson, Miss Ona bds 146 E River St.
Watson, Wm. (Rachel) laborer O H&L 422 Green St.
Weaver, Mrs. A. E. O 1029 Jenne St.
Weeks, E. R. (Bessie) 1 ch laborer T 116 Perry St Ind tel.
Weeks, Roy (Carrie) 2 ch news business T 415 Jones St.
Welch, Ed (Mary) 5 ch feed store T 102 E Front St.
Welch, Ray (Alta) freight brakeman on P M R R T 218 W Main St.
Wells, D. O. (Nancy) 3 ch ret O H&L 347 Front St.
Wells, Hayes E. (Kathrena M.) 2 ch clothier O H&L 730 Jenne St.
Wells, Perry A. barber bds 347 Front St.
Wells, Trelys O. student 730 Jenne St.
Welton, Miss Grace clerk bds 222 E Front St.
Welton, J. A. (Idella) 8 ch plumber T 222 E Front St.

GRAND LEDGE

Wesley, Louis (Loilla) 1 ch telegrapher
T 224 Washington St W.

West, Chas. (Bessie) 3 ch laborer O
H&L 815 Pleasant St.

West, Mrs. Ida 1 ch O H&L 115 E
Front St.

Wetherbee, Geo. W. (Winnie) 4 ch
lather T 113 W Front St.

Whalen, M. A. (Anna Bell) 2 ch painter
& paperhanger T 701 Pleasant St.

Wheaton, Marion (Grace) 4 ch laborer
O H&L 1264 Jenne St Ind tel.

Wheeler, Louis E. (Minnie) 2 ch brick
setter T 201½ N Bridge St.

Wheeler, Ralph (Vera) 1 ch laborer T
323 W Main St.

Wheelock, Henry (Margaret) 2 ch nurse
O H&L 225 W Front St Ind tel.

White, Edwin (Nellie) 2 ch bookkeeper
T 411 Jackson St.

Whitlock, Mrs. M. E. O H&L 90S De-
Groff St Ind tel.

Whitman, D. W. (Maude) 1 ch mason
T 415 Booth St.

Whitney, Mrs. E. R. 2 ch O H&L 436
Union St Ind tel.

Whitney, Miss Prude bds 319 W Main
St.

Wilcox, L. H. (Alvera) 5 ch laborer O
H&L 506 Taylor St Ind tel.

Wilcox, Wm. (Lorna) 1 ch real estate O
H&L 407 E Jefferson St Grand Ledge.

Wilkinson, Chas. (Leta) 1 ch barber O
H&L 354 W Jefferson St.

Williams, A. F. (Elma J.) 1 ch pat-
tern-maker T 506 S Bridge St Ind
tel.

Williams, Emily bookkeeper bds 215
Mineral St Ind tel.

Williams, Mrs. Emma O 231 W Scott
St Ind tel.

Williams, George laborer T 701 W Jef-
ferson St.

WILLIAMS, H. A. city engineer O 231 W
Scott St Ind tel. See adv.

Williams, John W. (Lillian) 1 ch tinner
& plumber T 322 E Scott St.

Williams, Ruth bds 215 Mineral St Ind
tel.

Williams, W. J. (Nancy) 3 ch mason O
H&L 215 Mineral St Ind tel.

Willis, Mrs. Jennie 1 ch telephone oper-
ator dressmaker bds 227 Ingersoll St.

Willis, John W. (Minnie) 5 ch laborer
O H&L 607 W Front St Ind tel.

Wilson, Mrs. W. E. O H&L 226 W Scott
St Ind tel.

Winfield, Miss L. Bell teacher T 114 W
Main St.

Winfield, Miss Ruby nurse T 114 W
Main St.

Wingate, Ernest printer bds 701 Pleas-
ant St.

Winnie, Geo. (Minnie) 1 ch laborer T
404 W Jefferson St Ind tel.

WINNIE, JAMES (Amelia) hardware &
plumbing O H&L 424 W Jefferson St
Ind tel. See adv.

Wonnemberg, Martin (Emma) 3 ch la-
borer T 621 Jenne St.

WOOD, ALICE E. florist O H&L 207 Mad-
ison St Ind tel. See adv.

Woodis, Chas. (Electa) 1 ch horse den-
tist O H&L 427 Union St.

Woodis, James (Helen) laborer T 419
Booth St.

Wooton, Rev. J. R. (Lotta) 6 ch minis-
ter parsonage 119 W Scott St Ind tel.

Wright, Miss Alice stenographer bds
112 W Scott St.

Wright, Ambia 7 ch O H&L 112 W
Scott St.

Wright, Elbridge (Maud) 2 ch cabinet
maker O H&L 226 Ingersoll St.

Wright, Mrs. Harriet 7 ch ret bds 226
Ingersoll St.

Wright, Miss Jessica teacher bds 112 W
Scott St.

Wright, Mrs. Luella 1 ch O 1201 Jenne
St.

York, George mason bds 303 W Front
St.

Young, Mrs. Susie 1 ch O 231 E River
St Ind tel.

Zimmerman, Merl (Hazel) 1 ch laborer
O H&L 160 McMullen St.

Zubrick, Joe laborer bds 708 W Front
St.

Zubrick, Mike (Frances) 3 ch laborer T
708 W Front St.



CHARLOTTE REPUBLICAN

Friday, July 2, 1869
(Continued)

By: J.C. Sherman
Copied by: Drouscella Perry Halsey

This brings to my mind another incident which occurred near the same place, which was related to me by **Peter Williams**. The circumstances were as follows: Some of the *b'hoys* got into a row, had a hard knock down, and one **Peter Southard** was arrested for assault and battery. The case was to be tried before **Esq. John Boody**, and on the day of trial, **Hon. Austin Blair**, who was then practicing law at Eaton Rapids, appeared as counsel for the prisoner. As soon as the case was called, Mr. Blair demanded the release of his client on the ground of the illegality of the papers. But the Squire, being pretty Dutch, "couldn't see the point," and refused to let the prisoner go. Finding at last that he could not convince the Justice of his mistake, Mr. Blair turned to the prisoner and told him he could go--That those papers would not hold him. "Vat ish dat," said the irate Esq., "You tell dat prisoner he can go? Py tam, Mister Blair, you let dat prisoner go I sends a bench warrant for him and you too, so sure as Got."

According to the best information I have been able to get, **Rachel F. Hart**, now the wife of **Dr. W. Derby** of Eaton Rapids, was the first child born in the township, and **Eunice E. Sherman**, now **Mrs. C. H. Mills** of Charlotte, was the next; at least they were the first born of American parents.

An incident occurred in connection with the birth of Mrs. Mills which seems

worthy of notice. Mr. Sherman and wife lived alone in a little shanty on the bank of Battle Creek, near where the Sheepwash is at the present time. The nearest neighbors were **Jesse Hart** on the west and **John Boody** on the east. At the time of which we speak the creek bottoms were overflowed, so that they were utterly impassible except with a boat, and there was no way of crossing the big swamp except by foot. In the afternoon a young man came along from the east by the name of **Charles Barnham**, wishing to cross the creek and proceed on his journey toward Bellevue. Finding it impossible to cross over, applied for help to Mr. S., who told him that he had a white-wood log lying on the bank of the creek, and if he would assist him to dig out a canoe he would ferry him across. This offer was gladly accepted, and to work they went. Not being able to complete their craft that night, Mr. B. was made welcome to the best accommodations it was in the power of his host to supply, which kindness he was very soon able to repay with interest. It soon became apparent to Mr. and Mrs. Sherman that the assistance of a Physician and matrons would be necessary as soon as they could be procured. It seemed to them that Providence had sent this young man to their aid in this their time of great need. At any rate he was "pressed into the service" Mr. S., fearing to leave his wife for so long a time, sent Mr. Barnham with his oxen and sled, telling him to leave them on this side of the swamp, go over on foot and get one of the men to come with the women and drive the oxen back, while he proceeded on foot to Eaton Rapids for **Dr. Hart**. The Dr. came on horseback as far as Mr. Boody's where he left his horse and

came the rest of the way on foot. The next day the canoe was finished and Mr. B. was *paddled* over, and went on his journey with a light heart, enough good solid full cloth for a pair of pants, and the hearty thanks of those he had so kindly assisted--leaving them rejoicing over the "little daughter which old Dr. Hart had brought in his saddle-bags" to cheer them in their wilderness home.

In the spring of 1840, two little boys and two little girls, the children of **John Boody**, were sent out into the woods to gather leeks, (they being a staple food in those days.) They went across to the west side of the swamp and got lost. After wandering around for a long time in the swamp, vainly, endeavoring to find their way back to the east side, they came out again on the west side, a long way down the swamp. Knowing that the wolves and bears were very thick, they began to look for a safe place to pass the night, and finally found an old hollow sycamore, which in falling had broken out a large limb, leaving a hole leading into the hollow large enough to admit them. They piled up some old chunks before the hole, leaving one in such a position that they could pull it into and close up the hole after they were in. Here they remained that night and nearly the whole of the next day. During the night, although quite late in the spring, there was a heavy snow storm, which was the cause of their staying so long in the hollow log, as they were barefooted and very scantily clothed. In the mean time their father had aroused his neighbors and scoured the woods in all directions, but failing to find them the first day they set fire to several old dry trees in different places, hoping that the children might be attracted by the light and come to some of them. The next

day the whole settlement hunted all day, but with no success. About ten o'clock on the morning of the third day they found them by one of the fires, nearly famished with cold and hunger. They had come out of their log towards night of the second day and found the tracks of the men who were hunting for them, and who had passed by the top of the very tree they were in. After wandering for some time they saw one of the fires and went to it staid by it all night and until found the next day.

The early settlers had many adventures with wild beast, but we shall only briefly notice a few. **Ezra Moe** set a trap for a wolf that had one him considerable damage, and the next morning found a large black wolf caught by the toe. He would not drag the trap by his toe, but when the men came near would grab the large clog to which the trap was fastened, and run with it in his mouth so fast that they could not overtake him until they went for a dog, who soon came up with his wolfship and so upset his calculations that the men got near-enough to kill him.

On another occasion, Mr. Moe being absent from home, his wife thought she heard some disturbance around his hencoop. She got up and went out to see what was the matter, but finding "all quiet on the Potomac" she again went to bed and soon to sleep. In the morning she found the hen-coop all torn down, all the fowls eaten up and the yard all tracked up by wolves. They had even come and sat on the door step.

One day a large bear came to Esek Whipple's hog pen, helped himself to a good sized porker, and coolly walked off into the forest. Mr. W. pursued with his gun, found old bruin about eighty rods from the house, quietly eating his dinner.

He immediately fired upon him and lodged a ball so near his *bread basket* that it entirely spoiled his appetite, and he beat a hasty retreat--so hasty, in fact, that Mr. W. tried in vain to overtake him.

Jesse Hart and his wife were one night startled from their quiet slumbers by a great uproar among the swine. Knowing very well what was the matter, they hastily lit the latern, and without stopping to dress hastened to the rescue; he with rifle in hand, while she carried the light. They soon arrived at the "scene of action," and saw a huge bear in a deadly encounter with the hogs just on the opposite side of the fence. Mr. H. inserted his rifle between the rails and soon made an end of the old pork thief, which furnished them a good supply of fresh meat.

Several other incidents similar to those already given have been told to us, but time will not allow all to be told. We leave them to be related by the old pioneers, as they sit by their comfortable firesides in the long winter evenings and tell them, to the grand children.

On the 6th day of May, 1854, the writer of this article came from Franklin Co. Vermont, and settled in Brookfield. There was then only three or four framed houses in the town, and I think four log school houses. **Enos Dutton** had a water saw-mill on Battle Creek, at Duttonville, which was the only mill of any kind (except coffee and fanning mills) in town. There were but few roads, and they were impassable at some seasons of the year. There were two log bridges, and most of the cross-ways were not covered. The best and oldest road in town was the one passing through from Hart's corners east, known as the Eaton Rapids and Bellevue road. There was

one branch from this, north, leading to the Foster settlement, and one south, leading to the Wilcox district. The only direct communication with Duttonville was by an Indian trail passing up the eastern side of Battle Creek.

Nearly all of the inhabitants were at this time poor, **Jesse Hart** being the richest man in town, and he offered his entire farm for six thousand dollars. The town had then been settled seventeen years, and there were a little less than one hundred voters in it; and I will venture to say that more than on-half of those were not only exceedingly destitute, but of the lowest grade of society; and inasmuch as this class were the ones who went "out on the openings" and into the surrounding country to get work, of course the town was judged by the specimens seen abroad, and in that way more than any other got the reputation of being a hard place. In fact I have heard many of our best men say that when they went into the surrounding cities and villages on business, they were really ashamed to tell that they were from Brookfield, for fear they would be looked upon as "hard pets." But we are happy to be able to say, had truthfully too, that the last fifteen years has wrought a marked change, not only in the general appearance of the township, but in the industry and moral character of the inhabitants. True, there yet remains a remnant of the "leaven of inrighteousness" and some who have recently settled here are no better, and I may say even worse than those above referred to, but these are exceptions, while the greater portion of the inhabitants of Brookfield are honest, industrious, enterprising people--awake to their own interest and the public good. The old log cabins are fast passing away,

and their places being supplied by large, convenient and handsome farm houses; while the little stumpy *patches* of a few years ago have expanded into large and well cultivated improvements, and the grubhoe shovel, plow, and nine tooth drag, have given place to the iron beam, the wheel cultivator, and the noisy mower. The old log school houses are mostly abandoned, their places being supplied by substantial, white frame buildings, not only much better in appearance but much more healthful and convenient.

There are five good school houses in town and another to be built this summer in District No. 6. We have five Steam Saw Mills, two Stave Mills, two, Shingle Machines, a Pump Factory, Store, Blacksmith Shop, Wagon Shop, Shoe Shop, two resident Physicians one Lawyer and one Farrier.

According to the statistics of 1864, the whole number of acres of taxable land in Brookfield was 14,594; the number of acres improved 3,095, and the number of acres sowed with wheat was 832. The total population at that time was 717. These figures were obtained at the very time when the town was destitute of able bodied men who had been enlisted, drafted or scared out of the country. The population, number of acres improved, and amount of wheat sown, would be much greater at the present time.

Most of the time during the war I was a resident of the village of Olivet, and consequently cannot give a full history of events as they transpired.

A large number of those subject to military duty enlisted; a few were drafted; and *some skedaddled*. Of the number which went forth to battle many never returned. Their bones are resting in the shallow "graves where their

comrades have laid them" or bleaching upone the deserted battle field. In the words of Capt. W. S. Trask we can say:

"O'er them the sad dew's are weeping,
And southern winds sighing alone."

Just before the last draft was to come off, I returned to my farm in this town. There was one man to be furnished from Brookfield, and only five or six men in town to draft from. No one seemed disposed to make any effort to fill the quota, so I took the matter in hand, and found a man who said he would go if we would raise \$200 special bounty for him I drew up a subscription paper, signed 25 dollars myself, and finally succeeded in raising the money, all but about 60 dollars, which was supplied by Mr. **Rugh**, and our man, (**T.L.G. Conant**,) was sent in and the town saved from a draft.

Only a very few of the first settlers now live in the township. Some have died, others removed. In a few years more all will have passed away, and their places have been filled by the rising generation. If the same ratio of improvement continues through the next decade that has marked the preceding one, both in the agricultural, mechanical, moral and literary departments of the township, none of its citizens need blush to acknowledge in any of the surrounding country that he is a resident of Brookfield.

Cenotaph: The word "Centoaph" engraved on a tombstone indicates that there is NO ONE buried there. The stone is in honor of or in memory of a person who is buried elsewhere.

Source: Antique week, August 12, 1996. Genealogy Gleanings Column

Obituary Corner

Typed as printed, by
Drouscella Halsey

Source: ECGS Scrapbook 9 pg 29
Dated: 1948

LaVern H. Sherman

Funeral Services were held Wednesday from the Pray Chapel by the **Rev. William E. Beckett** for **LaVern H. Sherman**, 62 who died Sunday night at his residence, 121 E. Seminary. He was born September 7, 1885, in Brookfield township. A son of **Julian and Elizabeth Sherman**. He was a retired farmer, a member of Brookfield lodge No. 439, F & A.M. and Brookfield chapter, O.E.S. and was vice-chairman of the Eaton county AAA committee. Surviving are the wife, **Mabel**; a son, **Gaylord Sherman** of Brookfield township; a daughter, **Mrs. Audrey Lykins** of Marshall; two step-sons, **Theo Carter** of Charlotte and **Louie Carter** of Grand Rapids; a sister, **Mrs. Mildred Johnson** of Charlotte and a brother, **Harold Sherman** of Charlotte. Burial was in Maple Hill cemetery.

Source: ECGS Scrapbook 9 pg 30

Date: Friday December 17, 1948

Ben Bush

Ben Bush, 78, passed away Tuesday evening at the local

hospital. He had been ill but a few days.

Funeral services will be conducted from the Dey Funeral Home Friday at 2 p.m. with the **Rev. Robert Chaney** officiating. Burial will be in Oakwood Cemetery.

Mr. Bush was born in Ohio and came to this community twenty years ago. He has lived and worked as a farmhand for different people since coming to Eaton Rapids. There are no known survivors.

Source: ECGS Scrapbook 9 pg 31

Claude D. Herrick

Dated: Friday January 14, 1949

Claude D. Herrick, 71 a resident of Eaton Rapids for many years, died in Stimson hospital here Friday, January 7. Funeral service was conducted Sunday at the Pettit Funeral Home with the **Rev. Victor Brown** officiating.

A son of **Oliver D.** and **Carrie Spicer Herrick**, he was born in Saginaw September 2, 1877. He was brought to Eaton Rapids as a child and was educated in the Spicerville school and Eaton Rapids High school.

He was a direct descendant, on his mother's side, of **Amos Spicer**, one of the three men who, with their families, founded Eaton Rapids. Spicerville and Spicer St., are named after that family which came to America from England in the pre-Revolutionary War period.

The Herrick family also had its origin in England, coming to this country early in its history. The family came to Michigan from New York state many years ago.

Mr. Herrick was an excellent athlete in his youth, and many Eaton Rapids people will recall his prowess as a baseball player and a boxer.

He was married on Dec. 12, 1900, to **Cecilia Culkins**, in Lansing. The couple set up housekeeping in the building where he passed away and which now is known as Stimson hospital. At that time it was owned by his grandfather, **Fred Spicer**.

After spending several years in Charlotte, Waukegan, Ill., and Jackson. Mr. Herrick returned to Eaton Rapids in 1927 to enter business. He retired in 1943.

He is survived by the widow, **Cecilia**; a daughter, **Mrs. O.F. Latshaw**, of Port Huron; a son **Robert C. Herrick**, editorial director of The Flint Journal, Flint and two grandchildren, **William A. Babbitt**, of Eaton Rapids, and **Julie Herrick**, of Flint.

Mr. Herrick was a member of Free and Accepted Masons, No. 63. Masonic service was held in Rose Hill cemetery. Mr. Herrick resided at 125 River St.

Source: ECGS Scrapbook 9 pg 32
Date: October 1 1950

Mrs. Frank Carpenter

Mrs. Agnes Carpenter, 59 years old, died Sunday at the residence in Eaton township, following a two-month illness. She was born August 14, 1891 in Osceola county, the daughter of **Burton** and **Sarah (Hudson) Church**, and had been a resident of Eaton county for 20 years, about eight years at the late home. Surviving are the husband, **Frank J. Carpenter**, to whom she was married March 3, 1908; three

daughters, **Miss Sarah Carpenter** of Leslie, **Mrs. Oscar Brenton** of Charlotte and **Mrs. Lyle French** of R. 3, Charlotte, and 11 sons. **Orby, Bruce, Lawrence, Harry** and **John** of R. 4, Charlotte, **Howard** of R. 3, Charlotte, **Berton** of Charlotte, **Rholland** of Holt, **Francis** of Springport, **Oren** of the U.S. Army in Japan and **Edwin** with the U.S. air force in Guam. Funeral services will be Friday at 2 p.m. at Burkhead chapel, **Rev. Angus McLachlan** of Sault Sainte Marie, former local Free Methodist pastor, will officiate. Burial will be in Maple Hill cemetery.

Source: ECGS Scrapbook 19 pg 6
Date: 1943

Tom Garvey

Thomas Garvey, 89 years old, a resident of Eaton township for many years, died Wednesday afternoon in a Battle Creek hospital where he had been a patient since February 26. He was born in New York state December 9, 1862. His wife died several years ago. Surviving are two nieces, **Mrs. James Moore** of Charlotte and **Hazel Bibbins** of Ypsilanti; six nephews, **Dee** and **Lloyd Garvey** of Eaton township, **Earl** and **William Garvey**, **Charles Garvey** of Lansing, and **Louis Garvey** of Battle Creek, and two sisters-in-law, **Mrs. Vinnie Garvey** of Charlotte and **Mrs. Dave** of Lansing. The body was brought to the Cheney funeral home and services will be held at St. Mary's Catholic church Saturday forenoon at ten o'clock, in charge of **Rev. Father Jerome V. MacEachin**. Burial will be in Maple Hill cemetery.

Eaton County Marriages

State of Michigan, County of Eaton
Abstracted By: Betty Goostrey &
Betty Polhamus

Volume 1 Page 27

Date: 14 April 1842. Groom: **Samuel Andruss**, age 24, residence Bellevue, Eaton Co., MI. Bride: **Abigail Shepherd**, age 21, residence Calhoun County, MI. Offical Performing: **Peter Sabin**, Minister of Gospel. Married at the house of **Albert Shepherd**. Witnesses: **Isa Andruss** and **H.H. Hunsiker**. Recorded 19 September 1842. D.D. Hughes, Deputy Clerk

Volume 1 Page 27

Date: 9 October 1842 Groom: **Allen H. Green**, age 28, residence of Marengo, Calhoun Co., MI. Bride: **Mariah M. White**, age 19, residence Bellevue, Eaton Co., MI. were married at the house of **Aaron White**, in the Town of Bellevue. Witnesses: **Chas. M. Nichols** and **Elias Finch**. Offical Performing: **Silvanus Hunsiker**, Justice of the Peace. Recorded 16 November 1842. **Martin S. Brackett**, Clerk by **D.Darwin Hughes**, Deputy Clerk

Volume 1 Page 28

Date: 23 October 1842 Groom: **Chauncy Bohannon**, age 28 on 2 July last, residence Windsor, Eaton County, MI. Bride: **Maria Ann Gilbert**, age 19 on 20 of March last., residence, Columbia, Jackson County, MI. Married at the house of **Royal T. Cogswell**. Offical Performing: **John Courter**, Justice Witnesses: **Samuel**

Gilbert residence Township of Oneida and **Royal T. Cogswell**, residence Township of Windsor. Dated at Windsor November 26, 1842 Recorded 28 November 1842 **Martin S. Brackett**, Clerk by **D. Darwin Hughes**, Deputuy Clerk

Volume 1 Page 28

Date: 20 November 1842. Groom: **Thomas H. Cowan**, age 24, residence tyler, Eaton County, MI. Bride: **Sarah Snyder**, age 24, residence Tyler, Eaton Co., MI. Offical Performing: **S.C. Stringham**, Minister of Gospel. Witnesses: **William Cowan** and **T.E. Kenyon**. Recorded 28 December 1842. **M.S. Brackett**, Clerk by **D.D. Hughes**, Deputy Clerk

Volume 1 Page 29

Date: 29 November 1842. Groom: **Cryus Bowen**, age 26, residence, Town of Carmel, Eaton County, MI. Bride: **Hannah Spencer**, age 18, residence, Town of Carmel, Eaton County, MI. were married at the house of **Thomas I. Spencer**. Offical Performing: **Simeon Harding**, Justice of the Peace. Witnesses: **T.I. Spencer** and **George Sikes**, both of Town of Carmel, Eaton Co., MI. /recorded 25 January 1843. **S. Blair**, Clerk

Volume 1 Page 29

Date: 6 November 1842 Groom: **Royal Wood**, age 43, residence, Township of Oneida, Eaton County, MI. Bride: **Ann Styles**, age 37, residence, Township of Chester, Eaton County, MI. Offical Performing: **Lemuel Cole**, Justice of the Peace. Witnesses: **Austin Wood** of Township of Oneida and **Jonathan Thomas** from Township of Chester.

Recorded 6 February 1843 at 12 o'clock
Frederick F. White, Deputy Clerk

Volume 1 Page 29

Date: 12 February 1843 Groom: **John Galvin**, age 34 on 12 May last, residence, M_____, Eaton County, MI. Bride: **Eliza Maria Fairbank**, age 22, on 2 December last, residence, Town of Delta, Eaton County, MI. Married at the house of **John Galvin** in Delta, Eaton County, MI. Offical Performing: **John Courter**, Justice. Witnesses: **Orrin Fairbanks**, Town of Delta and **William R. Fletcher**, Town of Delta, Eaton County, MI. Dated at Windsor February 11, 1843 and Recorded this 28 February 1843. **S. Blair**, Clerk.

Volume 1 Page 30

Date: 23 February 1843 Groom: **Benjamin F. Belding**, age 29, residence Walton, Eaton County, MI. Bride: **Polly Baldwin**, age 18, residence, Walton, Eaton County, MI. Were married at the house of **Albert Fordham**. Offical Performing: **H.N. Chase**, Justice of the Peace. Witnesses: **Albert Fordham**, **Asa F. Baldwin** and **Julia Fordham**. Recorded 2 March 1843 **S. Blair**, Clerk, **F.F. White**, Deputy

Volume 1 Page 30

Date: 15 January 1843 Groom: **William Johnson**, age 28, residence, Town of Carmel, Eaton County, MI. Bride: **Almina Ells**, age 29, residence, Town of Carmel, Eaton County, MI. Offical Performing: **S. C. Stringham**, Minister. Witnesses: **Peter Fetherstone** and **John Ells**. Recorded March 27, 1843 **A Blair**, Clerk. **F.F. White**, Deputy.

Volume 1 Page 30

Date: 23 February 1843. Groom: **Joel Latson**, age 24, residence, Tyler, Eaton County, MI. Bride: **Mary Ann Tarney**, age 27, residence, Tyler, Eaton County, MI. Offical Performing: **S.C. Stringham**, Minister. Witnesses: **Royal B. Ames** and **June A. Montgomery**. Recorded 27 March 1843 by **F.F. White**, Deputy Clerk

Volume 1 Page 31

Date: 22 December 1842 Groom: **Elias Eddy**, age 24, residence, Town of Oneida. Bride: **Catherine Hocomb**, age 19, residence, Town of Oneida. Offical Performing: **Larmon Chatfield** Place of Marriage: Oneida. Witnesses: **Jacob Dobbins** and **Melissa Dobbins** Recorded 24 March 1843. **F.F. White**, Deputy Clerk.

Volume 1 Page 31

Date: 1 April 1843 Groom: **Willis Barnum**, age 31, residence, Township of Sunfield. Bride: **Rachel Vanhauten**, age 19, residence, Roxand township. Offical Preforming: **Jno. Dow, Jr.**, Witnesses: **John Vanhouten** of Roxand, **Henry Barnum** of Sunfield. Recorded 1 May 1843 by **Frederick F. White**, Deputy Clerk

Volume 1 Page 31

Date: 31 January 1843 Groom: **Harmon Turrel**, age 26, residence, Bellevue Township. Bride: **Susan M. Darrow**, age 15, residence, Bellevue Township, were married at the residence of **A. Darrow, Jr.**, in the Village of Bellevue. Offical Preforming: **A. Darrow, Jr.**, Justice of the Peace. Witnesses: **Polly Darrow**, **Ann Darrow**, **Eleim Cummings** and **Alanson Meech**, all of Bellevue.

Recorded 14 April 1843 by **F.F. White**,
Deputy Clerk.

Volume 1 Page 32

Date: Saturday 18 March 1843. Groom: **H.M. Skinner**, age 23, residence, Town of Windsor, Eaton County, MI. Bride: **Ursula Reeves**, age 22, residence, Town of Windsor, were married at the home of **Oramel D. Skinner**, in the Town of Windsor. Offical Performing: **Oramel D. Skinner**, Justice of the Peace. Witnesses: **Charles Hinkley & Chester Gladding**. Recorded May 5, 1843 by **F.F. White**, Deputy Clerk

Volume 1 Page 32

Date: 1 May 1843 Groom: **Cyrus Buston**, age 26, residence, Castleton, Barry County, MI. Bride: **Harriet Gates**, age 24, residence, Vermontville, Eaton County, MI. Offical Performing: **S.S. Church**, Justice of the Peace. Witnesses: **Jacob Fuller, Julia Fuller, John Barrett & Margaret Barrett**, all of Vermontville. Recorded 14 May 1843 by **F.F. White**, Deputy Clerk.

Volume 1 Page 33

Date: 2 January 1843 Groom: **Christopher Champlin**, residence, Eaton. Bride: **Unice Eliz. Darling**, residence, Eaton. Place of Marriage: Town of Eaton. Offical Performing: **Abraham Smoke**, Justice of the Peace, Town of Eaton. Witnesses: **Watson P. Wales & Sylvester Champlin**. Recorded 18 March 1843 by **F.F. White**, Deputy Clerk.

Volume 1 Page 33

Date: 29 March 1843 Groom: **Lucius L. Benson**, residence, Eagle Township, Clinton County, MI. Bride: **Mary Malvina Lovell**, residence, Oneida

Township, Eaton County, MI. Offical Preforming: **Lemuel Cole**, Justice of the Peace. Witnesses: **Austin Wood**, Township of Oneida and **Thomas Allen**, Township of Eagle, Clinton County. Recorded May 1843 by **F.F. White**, Deputy Clerk

Volume 1 Page 34

Date: 27 September 1843 Groom: **Alexander Ingersoll**, age 23, residence, Delta, Eaton County, MI. Bride: **Emeline Baker**, age 20, residence, Delta, Eaton County, MI. Offical Preforming: **E.P. Ingersoll**, Minister of the Gospel. Witnesses: **Remember Baker & Wife** at Delta, Eaton County, MI. Recorded 27 September 1843 by **F.F. White**, Deputy Clerk.

Volume 1 Page 34

Date: 3 August 1843 Groom: **Johnson J. Nichols**, age 20, residence, Oneida, Eaton County, MI. Bride: **Cordelia Ayres**, age 15, residence, Oneida, Eaton County, MI. Place of Marriage: Oneida Offical Preforming: **James H. Nichols**, Justice of the Peace. Witnesses: **Wm. Johnson and Hiram March** Recorded: 5 October 1843 by **F.F. White**, Deputy Clerk

Volume 1 Page 34

Date: _____ Groom: **Nelson McArthur**, age 23, residence, Brookfield, Eaton County, MI. Bride: **Sebra Piper**, age 17, residence, Tyler, Eaton County, MI. Place of Marriage: Tyler. Offical Preforming: **David Knox**, Minister of the M.E. Church. Witnesses: **Andrew _____ and _____ DeMott**. Recorded 3 November 1843 by **F.F. White**, Deputy Clerk.

Eaton County Naturalization Index
(continued from Issue #23 Eaton County Quest, pages 105-107)
This index is found in the office of County Clerk
Copied by Drouscella (Perry) Halsey, September 1996

- Squires, Doris May nee Dunn.** Petition #431 Book 6. Attached to Petition: Certificate of Arrival & Affidavits of Witnesses. Certificate issued 5-4-1949 #6437727 in the name of Doris May Squires (stub from original certificate issued.)
- Stackman, Albert William aka Alfred William Stackman.** Petition #360 Book 5
Petition for naturalization denied 2-16-1944 reason deceased.
- Stackman, Alfred William aka Albert William.** See above record.
- Stackman, Effie Bell.** Oath of Allegiance Application granted 9-17-1941.
Allegiance lost by reason of Marriage.
- Stanley, Charles.** Petition # 1 Book 1. Attached to Petition: Declaration of Intention, Affidavits of Witnesses, Oath of Allegiance & Order Admitting.
Petitioner admitted as Citizen on 9-27-1909 Book 1 Page 71.
Certificate of Naturalization #27061 signed on 9-27-1909
- Stanley, Charles Alexander Mitchell (Child)** (see Charles Stanley)
- Stanley, Clara Agnes Ellen (Child)** (see Charles Stanley)
- Stanley, Norma Harrison (Child)** (see Charles Stanley)
- Stanley, Sarah Louise (Child)** (see Charles Stanley)
- Stanley, Walter Scott (Child)** (see Charles Stanley)
- Stapleton, Robert.** Declaration of Intention, Petition, Affidavits of Witnesses, & Oath in Packet I
- Stear, William James.** Petition #202 Book 4. Attached to Petition: Certificate of Arrival & Declaration of Intention.
- Stearns, Ruth Jutta nee Wegner.** Petition #473 Book 6. Attached to Petition: Application for transfer of Petition & Correspondence.
- Steenwijk, Martin aka Steenwyk, Martin.** Petition #304 Book 5. Attached to Petition: Declaration of Intention #306; Certificate of Arrival. Citizenship Petition granted 9-17-1941
- Steenwyk, Martin aka Steenwijk, Martin.** (See above record)
- Stein, Inge nee Ermertz now Arneric.** Petition #491 Book 6. Certificate issued 11-14-1956 #7560247 in the name of Inge Arneric. (stub from original certificate issued) Declaration of Intention #431
- Stein, Ingrid.** (By mother Inge Arneric) Petition #504 Book 6. Certificate issued 11-13-1957, #779353. (stub from original certificate issued)
- Stepan, Stefania later known as Estella Stephan Harris.** Petition #413 Book 6. Attached to Petition: Certificate of Arrival & Affidavits of Witnesses. Certificate issued 5-08-1946 #6436146, in the name of Estelle Stephan Harris. (stub from original certificate issued)
- Steve, Henry Frederick.** Petition #232 Book 4. Attached to Petition: Affidavit of Petitioner; Deposition of Witnesses. Certificate issued 9-18-1935 # 3871842 in the name of Henry Frederick Steve. (stub from original certificate issued)
(To be continued)

Information for copy from: Edith Engel, 108 Albermale Rd., Roscommon, MI
48653-9524. Will be on file in ECGS Library.

Compliments of

CLASS OF 1893,

Commencement Exercises

—OF THE—

DIMONDALE • HIGH • SCHOOL,

—AT—

WIDGER'S HALL,

—ON—

Friday Evening June 9th, 1893,

AT 8 O'clock P. M.

RECORD PRINT, NORTH LANSING, MICH.

MOTTO.—IN THE END WORK CROWNS.

CLASS OF '93.

Minnie Butler,	PRES.	Nellie Skinner.
Nettie Smith,	Secy.	Lucy Seigford,
Ettina Rinkle,	Treas.	Vernon Butler.

Audience Ushers.

Don Urie,	Joel See,
Minta Pray,	Alta Aldrich.

Flower Gatherers.

Lou Pierson, Ina Leisenring.

Programme.

Quartette, Song of Welcome	Mrs. D. H. Shipp, Mrs. C. E. Norton, Mr. D. H. Shipp, Mr. W. H. Shipp.
Invocation,	Rev. J. Hoag.
Quartette, Again the Roses Will Brightly Bloom.	Miss Millie Gillmore, Miss Alta Aldrich, Mrs. Chas. Hart, Miss Ettina Rinkle.
Self Reliance.	Nettie Smith.
Ride of Jennie McNeal,	Millie Gillmore.
Duet, Loveiy Lake Geneva	Miss Leona Hess, Miss Minta Pray.
Class History	Nellie Skinner.
The Polish Boy	L. Mae Carlton.
Solo, Shall our Parting be forever?	Zella Hurlbert.
Light,	Vernon Butler.
Joan of Arc,	Lucy Seigford.
Quartette, We come with Songs,	By Choir.
Nellie's Gift,	Zella Hurlbert.
Solo, Graduating Song,	L. Mae Carlton,
Beyond the Alps Lies Sunny Italy,	Minnie Butler,
Class Prophecy,	Ettina Rinkle.
Duet, I know where the Wild Thyme Blows,	L. Mae Carlton, Ettina Rinkle.
Class Address,	Dr. Tyler Hull.
Presentation of Diplomas.	A. D. Carlton.
Quartette, Good Night Song,	By Choir.

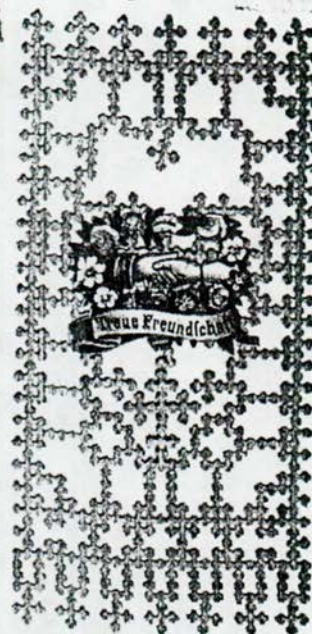


Bible Records Benjamin & Rebecca Wise



The following items and records were found in the Benjamin & Rebecca Wise Family Bible. Found at an Estate sale in Charlotte, Eaton County, Michigan October 1996. Showing Marriages, Births and Deaths of theirs and related families.

Thomas F. Justin - Born in Buffalo Dec 25th 1867
Died at Spencerport NY on Aug 1st at about 2^{o'clock}
of Heart Disease Buried at Forest Lawn Cemetery
on Aug 6th 1894 - Aged 26 yrs 7 Months & 5 days



PARENTS'

RECORD.

Father.

Mother.

Benjamin Wise

Born September 10th

1796

Married Nov. 28. 1814.

Died Jan. 21. 1842.

Rebecca Wise

Born May 23rd

1792

Married November 28th

Dec. 1. 1814

181

BIRTHS.

BIRTHS.

Carriester Wise

Born March 7th - 1816

Mary Opaline Wise

Born January 18th - 1820

John Wise Born

June 22nd - 1822

William Wise Born

May 23rd - 1824

Rebecca Ann Wise Born

June 4th - 1825

Olive Jane Wise Born

April 3rd - 1829

Sarah - Wise Born

November 5th - 1831

William B. Wise

Born May 20th - 1833

Amanda Wise

Born October 17th - 1838

Charlotte Anderson

born June 23. 1839.

George Huntson

March 2. 1844.

James Warren Justin

born July 3rd 1844.

Mary Adela Justin

born April 28th 1842.

Thomas Franklin Justin

born December 23rd 1847.

Thomas D. Justin

born October 27. 1872.

MARRIAGES.

MARRIAGES.

Benjamin Wise
Married December 18th 1857

Rebecca Wise
Married November 28th 1857

Mary Emeline Wise
Married December 2nd 1857

Conrad Wise
Married September 5th 1858

Polychron. Wise
Married December 24th

John Wise
Married July 4th

James Olga Wise
Married December 12th

Sarah Sophia Wise
Married February 22nd 1858

Margaret A. Anderson
Married August 1st 1858

George F. Hunt
Married Dec 27th 1870

Mary Adelaide Victorin
Married July 15th 1882

DEATHS.

DEATHS.

William Wise

Died May 6th 1825

William B. Wise

Died May 17th 1842

Roby Ann Wise

Amanda Wise

Mary Adelia Wise

All Drowned in
Lake Erie July 12th

1852

Thos. L. Justin
husband of Adelaide Anderson

Died Jan 17th 1858

Age 60
Oct 13th 1832

Mary Emaline Hunt

Died February 6. 1858

Aged 71 years 18

Died Jan 14 1862

Age 11 years 11 days

James Warren Justin

Died December 18. 1846

Age 11 years 11 days

1852

Margaret Adelaide Justin

Died January 6th 1879

Aged 37 years 6 mo 14 days

Thomas Franklin Justin

Died August 1st 1894

Aged 26 years 6 mo - 6 days

— Father — Family Record — Mother —
 Wm Gordon Margaret M. Leav Gordon.
 — Died Dec 29th 1863. — Died Mar 17th 1844.

John Gordon	Born.	Dec 10 th	1826.
Mary Gordon	"	June 28 th	1828
Margaret Gordon	"	July 9 th	1830
Robert Gordon	"	June 1 st	1832
William Gordon	"	May 1 st	1834
Eliza Gordon	"	Jan 6 th	1836.
Charles Gordon	"	June 21 st	1838
Thomas Gordon	"	Oct 28 th	1841
Hugh Gordon	"	March 9 th	1844
Thomas Gordon	Died	Oct 10 th	1840
Hugh Gordon	"	Aug 20 th	1844
Thomas Gordon	"	Aug 15 th	1846.
Mary Gordon, Dilts	"	Jan 18 th	1870
Margaret Gordon, Topping.	"	Nov 27 th	1889
William Gordon	"	June 18 th	1900



This is to Certify

That Thomas O. Justice of the State of New York and Margaret A. Johnson of the same place in the County of New York were by us joined together in

HOLY MATRIMONY

on the Eleventh day of August in the Year of our Lord One Thousand Eight Hundred and Eighty Nine

at St. John's Church,
Waller Parish

Margaret Hunt

J. Hunt
of the Church.

George Justin Born Sep 12 - 1761, Married 12 May 1786
 Lucy his wife Born May 5, 1765 - (Died 8 February 1828)
 Rebecca Elders Child Born Jan 16 1787, Died February 8, 1852
 Nathan Second Born March 1788, Died Sept 1806 or 1807
 Olive third Born February 9 1790 died March 1798
 Ruben fourth Born Dec 17 1792 died June 8 1860
 David A fifth Born July 27 1794 died September 30 1821
 Lucy sixth Born April 20 1796 died March 25 1828
 Sophia seventh Born June 10 1802, died July 23 1828
 George R eighth Born Sept - 9 1804
 Jacob J ninth Born April 14 1810, died April 13 1848
 At Michigan

Mrs Rebecca Stevens Died March 15 - 1821 aged 88 yrs
 Aunt - of Lucy wife of George Justin

M
 M 147
 M
 M

Mulliken High School Graduating Class of 1905

Donated by
Dr. Forrest D. Baribeau
1381 Country Club Road
Marysville, CA 95901-9677



Standing Left to Right:
Floretta Josie Hale (his mother) ; Edith Marylyn Potter; Queena Maud Warner;
Viletta Jennie Hale (twin sister of Floretta Josie)
Seated: C.A. Schilz, Principal; Hugh Alton Morris



The Class of '05
 at
 Mulliken Public Schools
 requests the pleasure of
 your presence at their
Commencement Exercises
 on Thursday Evening
 June fifteenth at
First Congregational Church
 Baccalaureate Sermon
 Sunday Evening, June eleventh
 Rev. A. A. Secord

Graduates

EDITH MARYLYN POTTER
 HUGH ALTON MORRIS
 FLORETTA JOSIE HALE
 QUEENA MAUD WARNER
 VILETTA JENNIE HALE

Class Colors

PINK AND GREEN

Class Flower

PINK CARNATION

Class Motto

"ROWING, NOT DRIFTING"

Corps of Teachers

C. A. SCHILZ, Principal
 EDNA COUNT VERDA STEALEY

Board of Education

H. PEABODY WM. BARBER
 H. L. STEARNS

Top Left of page
 Merit Card
 ECGS VF-47

Top Right & Bottom Left
 donated by
 Dr. Forrest D. Baribeau
 October 1996

Pedigree Chart

No. 1 on this chart is the same as no. 1 on chart no. 1

Chart no. 1

2 Dorion RAIDEL

Born: 29 May 1892
Place: Walton Twp., Eaton Co., MI
Marr: 2 Jun 1920
Place:
Died: 6 May 1977
Place: Charlotte, Eaton Co., MI

1 Doris Arlene RAIDEL

Born: 21 May 1921
Place: Eaton County, MI
Marr: 29 Dec 1937
Place:
Died:
Place:

Hollis Ballou PATTERSON
Spouse

3 Helen Cynthia HOFFNER

Born: 7 Sep 1899
Place: Eaton Twp., Eaton Co., MI
Died: 13 Oct 1983
Place: Lansing, Ingham Co., MI

4 Adam Philip RAIDEL

Born: 10 Jul 1864
Place: Walton Twp., Eaton Co., MI
Marr: 20 Aug 1891
Place:
Died: 22 Aug 1938
Place: Walton Twp., Eaton Co., MI

5 Cordelia A. MESSENGER

Born: 7 May 1864
Place: Windham, Portage Co., OH
Died: 1 Apr 1942
Place: Walton Twp., Eaton Co., MI

6 Charles A. HOFFNER

Born: 4 Dec 1855
Place: Rochester, Monroe Co., N.Y.
Marr: 21 Nov 1888
Place:
Died: 23 Jul 1942
Place: Walton Twp., Eaton Co., MI

7 Emma Jane PIPER

Born: 7 Sep 1859
Place: Delhi Twp., Ingham Co., MI
Died: 14 Feb 1932
Place: Eaton Twp., Eaton Co., MI

8 Jonathan W. RAIDEL

Born: 22 Apr 1822 cont. _____
Place: Dauphin Co., PA
Marr: 26 Mar 1857
Place:
Died: 16 Nov 1893
Place: Walton Twp., Eaton Co., MI

9 Lovina RITZMAN

Born: 27 Apr 1827 cont. _____
Place: Dauphin Co., PA
Died: 9 May 1906
Place: Walton Twp., Eaton Co., MI

10 Wilson Lorenzo MESSENGER

Born: 7 Mar 1824 cont. _____
Place: Windham, Portage Co., OH
Marr: 8 May 1844
Place:
Died: 20 Jan 1886
Place: Walton Twp., Eaton Co., MI

11 Orilla STREETER

Born: 26 Jun 1820 cont. _____
Place: Windham, Portage Co., OH
Died: 10 Jun 1911
Place: Walton Twp., Eaton Co., MI

12 Andrew HOFFNER

Born: 23 Sep 1831 cont. _____
Place: Darmstadt, Hessen, Ger.
Marr: 4 Jan 1855
Place:

Died: 16 Mar 1898
Place: Eaton Twp., Eaton Co., MI

13 Cynthia HUTCHINSON

Born: 20 Nov 1829 cont. _____
Place: Perinton, Monroe Co., N.Y.
Died: 6 Feb 1859
Place: Rochester, Monroe Co., N.Y.

14 Marshall Moses PIPER

Born: 9 Nov 1828 cont. _____
Place: Hancock, Addison Co., VT
Marr: 16 Apr 1855
Place:

Died: 1 Jan 1913
Place: Delhi Twp., Ingham Co., MI

15 Harriet Mellisa SWEET

Born: 30 Jun 1835 cont. _____
Place: N.Y.
Died: 19 Feb 1915
Place: Lansing, Ingham Co., MI

Prepared 29 Oct 1996 by:

D. Arlene Patterson
2413 Vindale Rd.
Tavares, FL 32778

Pedigree Chart

Chart no. 1

No. 1 on this chart is the same as no. 1 on chart no. 1

2 Jonathan W. RAIDEL

Born: 22 Apr 1822
Place: Dauphin Co., PA
Marr: 26 Mar 1857
Place:
Died: 16 Nov 1893
Place: Walton Twp., Eaton Co., MI

1 Adam Philip RAIDEL

Born: 10 Jul 1864
Place: Walton Twp., Eaton Co., MI
Marr: 20 Aug 1891
Place:
Died: 22 Aug 1938
Place: Walton Twp., Eaton Co., MI

Cordelia A. MESSENGER
Spouse

3 Lovina RITZMAN

Born: 27 Apr 1827
Place: Dauphin Co., PA
Died: 9 May 1906
Place: Walton Twp., Eaton Co., MI

4 John Philip RAIDEL

Born: 20 Sep 1800
Place: Dauphin Co., PA
Marr:
Place:
Died: 18 Aug 1876
Place: Eaton Co., MI

5 Elizabeth ?

Born: 1802
Place: PA
Died: 1862
Place:

6 Andrew RITZMAN

Born: 15 Sep 1799
Place:
Marr:
Place:
Died: 10 Sep 1873
Place:

7 Maru (Polly) HAWK

Born: 28 Apr 1806
Place:
Died: 19 Dec 1879
Place:

8

Born: _____ cont. _____
Place:
Marr:
Place:
Died:
Place:

9

Born: _____ cont. _____
Place:
Died:
Place:

10

Born: _____ cont. _____
Place:
Marr:
Place:
Died:
Place:

11

Born: _____ cont. _____
Place:
Died:
Place:

12

Born: _____ cont. _____
Place:
Marr:
Place:
Died:
Place:

13

Born: _____ cont. _____
Place:
Died:
Place:

14

Born: _____ cont. _____
Place:
Marr:
Place:
Died:
Place:

15

Born: _____ cont. _____
Place:
Died:
Place:

Prepared 29 Oct 1996 by:

D. Arlene Patterson
2413 Vindale Rd.
Tavares, FL 32778

Pedigree Chart

Chart no. 1

No. 1 on this chart is the same as no. 1 on chart no. 1

2 Andrew HOFFNER

Born: 23 Sep 1831
Place: Darmstadt, Hessen, Ger.
Marr: 4 Jan 1855
Place:
Died: 16 Mar 1898
Place: Eaton Twp., Eaton Co., MI

1 Charles A. HOFFNER

Born: 4 Dec 1855
Place: Rochester, Monroe Co., N.Y.
Marr: 21 Nov 1888
Place:
Died: 23 Jul 1942
Place: Walton Twp., Eaton Co., MI

Emma Jane PIPER

Spouse

3 Cynthia HUTCHINSON

Born: 20 Nov 1829
Place: Perinton, Monroe Co., N.Y.
Died: 6 Feb 1859
Place: Rochester, Monroe Co., N.Y.

4 Jacob HOFFNER

Born: 1805
Place:
Marr: 10 Oct 1830
Place:
Died: 26 Apr 1894
Place:

5 Lena WIESTERFELDT

Born: 3 Oct 1807
Place:
Died: 13 Oct 1847
Place:

6 Lewis M. HUTCHINSON

Born: 1 Jun 1804
Place:
Marr: 4 Dec 1828
Place:
Died: 19 Jul 1887
Place:

7 Betsey PALMER

Born:
Place:
Died:
Place:

8

Born: _____ cont. _____
Place:
Marr:
Place:
Died:
Place:

9

Born: _____ cont. _____
Place:
Died:
Place:

10

Born: _____ cont. _____
Place:
Marr:
Place:
Died:
Place:

11

Born: _____ cont. _____
Place:
Died:
Place:

12

Born: _____ cont. _____
Place:
Marr:
Place:
Died:
Place:

13

Born: _____ cont. _____
Place:
Died:
Place:

14

Born: _____ cont. _____
Place:
Marr:
Place:
Died:
Place:

15

Born: _____ cont. _____
Place:
Died:
Place:

Prepared 28 Oct 1996 by:

D. Arlene Patterson
2413 Vindale Rd.
Tavares, FL 32778

Pedigree Chart

No. 1 on this chart is the same as no. 1 on chart no. 1

Chart no. 1

2 Claud William ROOT

Born: 17 Aug 1909
Place: Roxand, Eaton Co., MI
Marr: 3 Jun 1935
Place: Angola, Steuben Co., IN
Died: 29 Sep 1980
Place: Manistec, Manistec Co., MI

1 LaVerne William ROOT

Born: 3 Apr 1935
Place: Charlotte, Eaton Co., MI
Marr: 12 Dec 1959
Place: Lansing, Ingham Co., MI
Died:
Place:

Hester Ann RAY

Spouse

3 Jessamine Bernice SHAFFER

Born: 26 Apr 1910
Place: Clarinda (?) IA
Died: 28 Jun 1996
Place: Bridgeton, Cumberland, NJ

4 Fred Earl ROOT

Born: 5 Aug 1884
Place: Roxand, Eaton Co., MI
Marr: 25 Oct 1903
Place: Charlotte, Eaton Co., MI
Died: 4 Jul 1956
Place: Charlotte, Eaton Co., MI

5 Lula B. DEPEW

Born: 3 Feb 1887
Place: Roxand, Eaton Co., MI
Died: 28 Dec 1969
Place: Charlotte, Eaton Co., MI

6 Marion Clyde SHAFFER

Born: 21 Jun 1879
Place: Monmouth, Warren Co., IL
Marr: 26 Mar 1903
Place: Gravity, Taylor Co., IA
Died: 12 Nov 1971
Place: Stanton, Montcalm Co., MI

7 Olive McCalvin HILL

Born: 29 Mar 1886
Place: Gravity, Taylor, IA
Died: 6 May 1958
Place: Williamston, Ingham Co., MI

8 William E. Maxon ROOT

Born: 18 Aug 1838
Place: Dover, Cuyahoga Co., OH
Marr: 29 May 1866
Place: Dover, Cuyahoga Co., OH
Died: 11 Jan 1928
Place: Mulliken, Eaton Co., MI

9 Ann Elizabeth INGRAM

Born: 22 Sep 1848
Place: England
Died: 30 May 1904
Place: Roxand, Eaton Co., MI

10 Amos DEPEW

Born: 6 Jul 1849
Place: Allen Co., IN
Marr: 7 Dec 1882
Place: Eaton Co., MI
Died: 19 Oct 1924
Place: Eaton Co., MI (?)

11 Ethel PARTLOW

Born: 9 Jan 1858
Place: VT or MI (?)
Died: 11 Oct 1916
Place: Roxand, Eaton Co., MI

12 John Benford SHAFFER

Born: 23 Apr 1856
Place: Monmouth, Warren Co., IL
Marr: 28 Dec 1877
Place: Monmouth, Warren Co., IL
Died: 13 Sep 1945
Place: New Market, Taylor Co., IA

13 Lillian Ada CALDWELL

Born: 23 Dec 1858
Place: Monmouth, Warren Co., IL
Died: 15 Jun 1922
Place: Rochester, Olmsted Co., MN

14 Edwin Percy HILL

Born: 1849
Place: Guemsey Co., OH
Marr: 22 Mar 1875
Place: Taylor Co., IA
Died: 22 Nov 1889
Place: Taylor Co., IA

15 Mary R. HOWARD

Born: 13 Sep 1853
Place: Morrow Co., OH
Died: 10 Mar 1931
Place: New Market, Taylor Co., IA

Prepared 29 Oct 1996 by:

LaVerne William Root
5953 N. Stiles Rd.
Ludington, MI 49431
616-843-2728

Pedigree Chart

Chart no. 1

No. 1 on this chart is the same as no. 1 on chart no. 1

2 Fred Earl ROOT

Born: 5 Aug 1884
Place: Roxand, Eaton Co., MI
Marr: 25 Oct 1903
Place: Charlotte, Eaton Co., MI
Died: 4 Jul 1956
Place: Charlotte, Eaton Co., MI

1 Claud William ROOT

Born: 17 Aug 1909
Place: Roxand, Eaton Co., MI
Marr: 3 Jun 1935
Place: Angola, Steuben Co., IN
Died: 29 Sep 1980
Place: Manistec, Manistec Co., MI

Jessamine Bernice SHAFFER

Spouse

3 Lula B. DEPEW

Born: 3 Feb 1887
Place: Roxand, Eaton Co., MI
Died: 28 Dec 1969
Place: Charlotte, Eaton Co., MI

4 William E. Maxon ROOT

Born: 18 Aug 1838
Place: Dover, Cuyahoga Co., OH
Marr: 29 May 1866
Place: Dover, Cuyahoga Co., OH
Died: 11 Jan 1928
Place: Mulliken, Eaton Co., MI

5 Ann Elizabeth INGRAM

Born: 22 Sep 1848
Place: England
Died: 30 May 1904
Place: Roxand, Eaton Co., MI

6 Amos DEPEW

Born: 6 Jul 1849
Place: Allen Co., IN
Marr: 7 Dec 1882
Place: Eaton Co., MI
Died: 19 Oct 1924
Place: Eaton Co., MI (?)

7 Ethel PARTLOW

Born: 9 Jan 1858
Place: VT or MI (?)
Died: 11 Oct 1916
Place: Roxand, Eaton Co., MI

8 Joseph ROOT

Born: 1786
Place: CT
Marr:

cont. _____

Place:
Died: 1865
Place: OH

9 Sallie MAXON

Born: 1791
Place: CT (?)
Died: 1878
Place: MI

cont. _____

10 William INGRAM

Born: 1824
Place: England
Marr:

cont. _____

Place:
Died: 1884
Place: MI

11 E O'VOTMAN (TROTMAN ?)

Born: 1826
Place: England
Died: 1906
Place: MI

cont. _____

12 Lemuel DEPEW

Born: 1819
Place: OH
Marr:

cont. _____

Place:
Died: 1898
Place: MI

13 Sarah WATSON

Born: 1818
Place: OH
Died:

cont. _____

Place:

14 Orange PARTLOW

Born: 1817
Place: VT or Canada
Marr:

cont. _____

Place:
Died:

15 Leonara BOYTON

Born: 1817
Place: Canada
Died:

cont. _____

Place:

Prepared 29 Oct 1996 by:

LaVerne William Root
5953 N. Stiles Rd.
Ludington, MI 49431
616-843-2728

Pedigree Chart

No. 1 on this chart is the same as no. 1 on chart no. 1

Chart no. 1

2 Marion Clyde SHAFFER

Born: 21 Jun 1879
Place: Monmouth, Warren Co., IL
Marr: 26 Mar 1903
Place: Gravity, Taylor Co., IA
Died: 12 Nov 1971
Place: Stanton, Montcalm Co., MI

1 Jessamine Bernice SHAFFER

Born: 26 Apr 1910
Place: Clarinda (?) IA
Marr: 3 Jun 1935
Place: Angola, Steuben Co., IN
Died: 28 Jun 1996
Place: Bridgeton, Cumberland, NJ

Claud William ROOT
Spouse

3 Olive McCalvin HILL

Born: 29 Mar 1886
Place: Gravity, Taylor, IA
Died: 6 May 1958
Place: Williamston, Ingham Co., MI

4 John Benford SHAFFER

Born: 23 Apr 1856
Place: Monmouth, Warren Co., IL
Marr: 28 Dec 1877
Place: Monmouth, Warren Co., IL
Died: 13 Sep 1945
Place: New Market, Taylor Co., IA

5 Lillian Ada CALDWELL

Born: 23 Dec 1858
Place: Monmouth, Warren Co., IL
Died: 15 Jun 1922
Place: Rochester, Olmsted Co., MN

6 Edwin Percy HILL

Born: 1849
Place: Guernsey Co., OH
Marr: 22 Mar 1875
Place: Taylor Co., IA
Died: 22 Nov 1889
Place: Taylor Co., IA

7 Mary R. HOWARD

Born: 13 Sep 1853
Place: Morrow Co., OH
Died: 10 Mar 1931
Place: New Market, Taylor Co., IA

8 Peter G. SHAFFER

Born: 1820 cont. _____
Place: PA
Marr:
Place:
Died: 1908
Place: IL

9 Lucinda H. BENFORD

Born: 1826 cont. _____
Place: PA
Died: 1909
Place: IL

10 John CALDWELL

Born: 1813 cont. _____
Place: OH
Marr:
Place:
Died: 1892
Place: NE

11 Mary Ann NICHOL

Born: 1822 cont. _____
Place: OH
Died: 1898
Place: NE

12 George HILL (MCHILL ?)

Born: 1815 cont. _____
Place: Ireland
Marr:
Place:
Died:
Place:

13 Christine MCKELVEY

Born: 1821 cont. _____
Place: Ireland or OH
Died:
Place:

14 Hymen M. HOWARD

Born: 1825 cont. _____
Place: N.Y.
Marr:
Place:
Died: 1899
Place: IA

15 Olive AVERY

Born: 1823 cont. _____
Place: VT
Died:
Place:

Prepared 29 Oct 1996 by:

LaVerne William Root
5953 N. Stiles Rd.
Ludington, MI 49431
616-843-2728



Swift School- 1935- Kalno Twn. Eaton CO. Mi.

Left to Right:

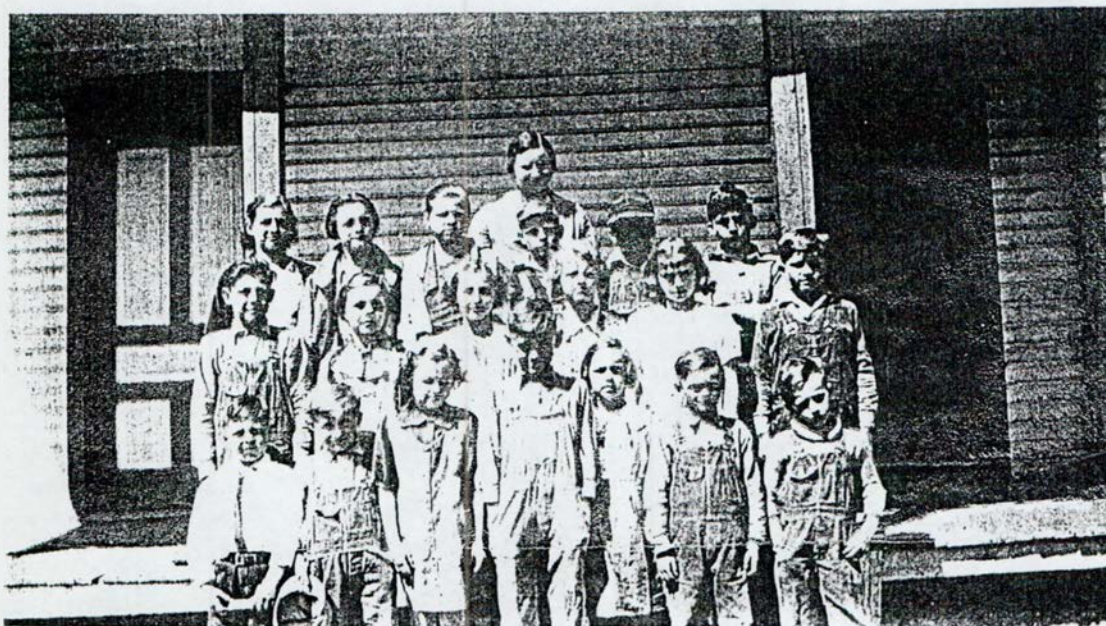
First Row: Laurel Starr, Marian Garity, Arthur Creller, Jerry Starr
John Beverly, Velmon Mead

Second Row: Betty Creller, Donna Hall, Elizabeth Keehne, Ardean Barlund,
Verness Mead, Wayne Childs, Lois Garity

Third Row: Jean Garity, Maxine Parmele, Doris Mead, Marilyn Parmele,
Robert Hall

Top Row: Thomas Garity, Lucille Rogers (Teacher), Genevive Barlund,
Alta Mae Keehne, Joyce Garity, Clinton Beverly

Donated by: Robert D. Haigh
Box 97 221 Charlotte Hwy.
Mulliken, MI 48861



Swift School, Kalno Twn. Eaton Co. MI. 1936

Left to Right:

First Row: John Garity, Arthur Creller, Laurel Starr, John Beverly,
Marian Garity, Velmon Mead, Jerry Starr

Second Row: Verness Mead, Lois Garity, Elizabeth Keehne, Betty Creller,
Donna Hall, Wayne Childs

Third Row: Alta Mae Keehne, Jean Garity, Doris Mead, -- ,
Ardean Barlund, Robert Hall

Top Row: Mrs. Tubbs, Teacher

Donated by: Robert D. Haigh
Box 97 221 Charlotte Hwy.
Mulliken, MI 48861

Pedigree Chart

Chart no. 1

No. 1 on this chart is the same as no. 1 on chart no. 1

2 Fred Earl ROOT

Born: 5 Aug 1884
Place: Roxand, Eaton Co., MI
Marr: 25 Oct 1903
Place: Charlotte, Eaton Co., MI
Died: 4 Jul 1956
Place: Charlotte, Eaton Co., MI

1 Claud William ROOT

Born: 17 Aug 1909
Place: Roxand, Eaton Co., MI
Marr: 3 Jun 1935
Place: Angola, Steuben Co., IN
Died: 29 Sep 1980
Place: Manistee, Manistee Co., MI

Jessamine Bernice SHAFFER
Spouse

3 Lula B. DEPEW

Born: 3 Feb 1887
Place: Roxand, Eaton Co., MI
Died: 28 Dec 1969
Place: Charlotte, Eaton Co., MI

4 William E. Maxon ROOT

Born: 18 Aug 1838
Place: Dover, Cuyahoga Co., OH
Marr: 29 May 1866
Place: Dover, Cuyahoga Co., OH
Died: 11 Jan 1928
Place: Mulliken, Eaton Co., MI

5 Ann Elizabeth INGRAM

Born: 22 Sep 1848
Place: England
Died: 30 May 1904
Place: Roxand, Eaton Co., MI

6 Amos DEPEW

Born: 6 Jul 1849
Place: Allen Co., IN
Marr: 7 Dec 1882
Place: Eaton Co., MI
Died: 19 Oct 1924
Place: Eaton Co., MI (?)

7 Ethel PARTLOW

Born: 9 Jan 1858
Place: VT or MI (?)
Died: 11 Oct 1916
Place: Roxand, Eaton Co., MI

8 Joseph ROOT

Born: 1786 cont. _____
Place: CT
Marr:
Place:

9 Sallie MAXON

Born: 1791 cont. _____
Place: CT (?)
Died: 1878
Place: MI

10 William INGRAM

Born: 1824 cont. _____
Place: England
Marr:
Place:
Died: 1884
Place: MI

11 E O'VOTMAN (TROTMAN ?)

Born: 1826 cont. _____
Place: England
Died: 1906
Place: MI

12 Lemuel DEPEW

Born: 1819 cont. _____
Place: OH
Marr:
Place:
Died: 1898
Place: MI

13 Sarah WATSON

Born: 1818 cont. _____
Place: OH
Died:
Place:

14 Orange PARTLOW

Born: 1817 cont. _____
Place: VT or Canada
Marr:
Place:
Died:
Place:

15 Leonara BOYTON

Born: 1817 cont. _____
Place: Canada
Died:
Place:

Prepared 28 Oct 1996 by:

LaVerne William Root
5953 N. Stiles Rd.
Ludington, MI 49431
616-843-2728

Pedigree Chart

No. 1 on this chart is the same as no. 1 on chart no. 1

Chart no. 1

2 Marion Clyde SHAFFER

Born: 21 Jun 1879
Place: Monmouth, Warren Co., IL
Marr: 26 Mar 1903
Place: Gravity, Taylor Co., IA
Died: 12 Nov 1971
Place: Stanton, Montcalm Co., MI

1 Jessamine Bernice SHAFFER

Born: 26 Apr 1910
Place: Clarinda (?) IA
Marr: 3 Jun 1935
Place: Angola, St.uben Co., IN
Died: 28 Jun 1996
Place: Bridgeton, Cumberland, NJ

Claud William ROOT

Spouse

3 Olive McCalvin HILL

Born: 29 Mar 1886
Place: Gravity, Taylor, IA
Died: 6 May 1958
Place: Williamston, Ingham Co., MI

4 John Benford SHAFFER

Born: 23 Apr 1856
Place: Monmouth, Warren Co., IL
Marr: 28 Dec 1877
Place: Monmouth, Warren Co., IL
Died: 13 Sep 1945
Place: New Market, Taylor Co., IA

5 Lillian Ada CALDWELL

Born: 23 Dec 1858
Place: Monmouth, Warren Co., IL
Died: 15 Jun 1922
Place: Rochester, Olmsted Co., MN

6 Edwin Percy HILL

Born: 1849
Place: Guernsey Co., OH
Marr: 22 Mar 1875
Place: Taylor Co., IA
Died: 22 Nov 1889
Place: Taylor Co., IA

7 Mary R. HOWARD

Born: 13 Sep 1853
Place: Morrow Co., OH
Died: 10 Mar 1931
Place: New Market, Taylor Co., IA

8 Peter G. SHAFFER

Born: 1820
Place: PA

cont. _____

Marr:
Place:

Died: 1908
Place: IL

9 Lucinda H. BENFORD

Born: 1826
Place: PA
Died: 1909
Place: IL

cont. _____

10 John CALDWELL

Born: 1813
Place: OH

cont. _____

Marr:
Place:

Died: 1892
Place: NE

11 Mary Ann NICHOL

Born: 1822
Place: OH
Died: 1898
Place: NE

cont. _____

12 George HILL (MCHILL ?)

Born: 1815
Place: Ireland

cont. _____

Marr:
Place:

Died:
Place:

13 Christine MCKELVEY

Born: 1821
Place: Ireland or OH

cont. _____

Died:
Place:

14 Hymen M. HOWARD

Born: 1825
Place: N.Y.

cont. _____

Marr:
Place:

Died: 1899
Place: IA

15 Olive AVERY

Born: 1823
Place: VT

cont. _____

Died:
Place:

Prepared 29 Oct 1996 by:

LaVerne William Root
5953 N. Stiles Rd.
Ludington, MI 49431
616-843-2728



Swift School, Kalma Twp. Eaton CO. MI. 1937

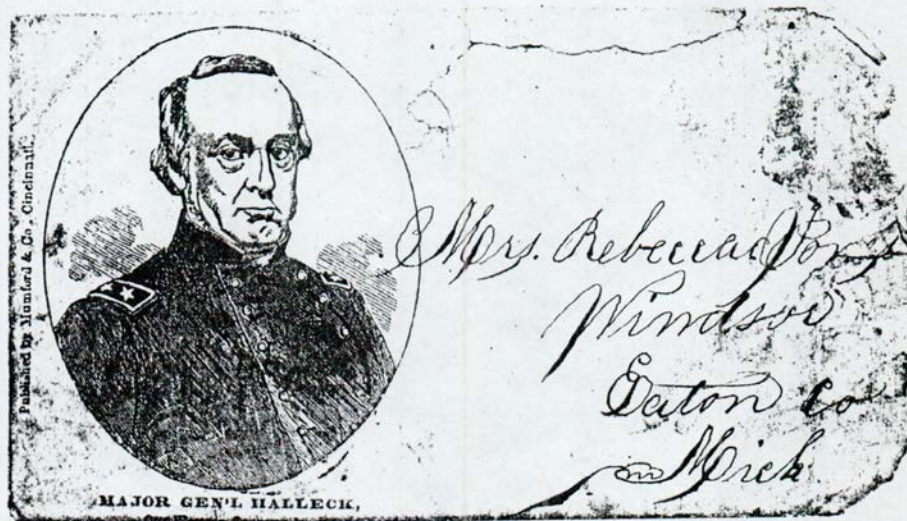
Left to Right:

First Row: Geraldine Ackley, Joyce Ackley, Evelyn Filbert, Glenadine Ackley, Gerald Ackley, John Garity

Second Row: Arthur Creller, Velmon Mead, Verness Mead, Wayne Childs, Robert Hall, John Beverly, Dorothy Filbert, Marian Garity

Top Row: Elizabeth Keehne, Betty Creller, Ardean Barlund, Robert Hall, Joyce Ackley, Jean Garity, Donna Hall, Lois Garity

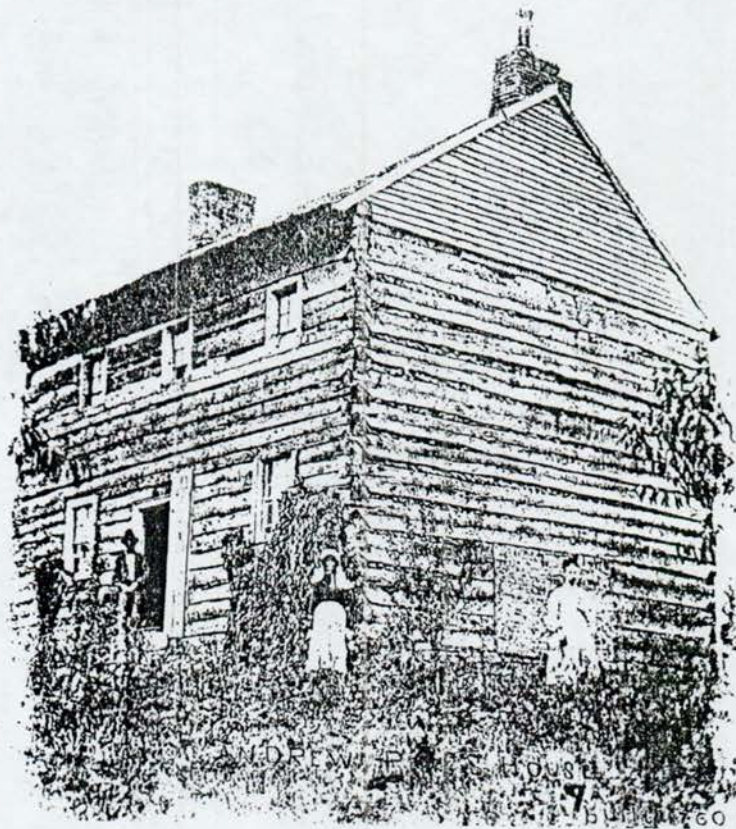
Donated by: Robert D. Haigh
Box 97 221 Charlotte Hwy
Mulliken, MI 48861



This material has been donated by: Edith Engel, 108 Albemarle, Roscommon, MI 48653.



Edwin Butler House located Corner of Windor and Canal Roads, Dimondale, MI



Andrew Poe's House. Built 1760 location not given
Relative of Rebecca Jones, Windsor Twp., MI
Donated by: Edith Engel

? Queries ??

Queries are accepted free and will be published in each issue as space permits. If you have a query to submit, please type or print clearly and send it to: **Barbara Green Puffenberger, P.O. Box 337, Charlotte, MI. 48813-0337.**

Cumings/Briggs. Where are **Thomas Jacob Cumings** and his wife **Betsey (Briggs) Cumings** buried? Thomas died 1840 and Betsey died 26 Jan 1867; both in Bellevue Twp., Eaton Co., MI. **Jean M. White, P.O. Box 11248, Glendale, AZ 85318-1348**

Neff/Keeler/Talbert/Seeley. Two of **John** and **Henrietta Neff's** daughters married on 4 March 1891 in Hamlin Twp, **Mary L. Neff** married **Jay B. Seeley** and her sister **Ella M. Neff** married **Lewis E. Keeler**; another daughter **Daisy Neff** married 10 Nov 1897 in Eaton Rapids to **Ralph Talbert**. In the Eaton County records, I haven't found any birth records for their children or death records for them. Are any of their descendants still in Eaton County? Where did these three couples go?
Margaret James, 15445 Cobalt #172, Sylmar, CA 91342

White/ Broughton. 1) **George A. White**, born 1850 Lorain, Ohio. Died after 1897 and before 1899 maybe? Married **Mary Broughton** at Charlotte July 1887. She remarried Dec 1898 to **John Spitzer**. Children: **Norman & Elmer**. 2) **George Albert White** born 1891 Mt. Pleasant, MI. Died: _____. I am looking for information on **George A. White #1**. Where did he die and is buried? Rumor was he was at county farm. Was he buried there? Also does anyone know if **Homer Patterson** was buried at the county farm? **Edith Engel, 108 Albemarle, Roscommon, MI 48653**

Showerman/Fox. Would like to correspond with relatives of **George Showerman** born in Sproutbrook, Montgomery Co., N.Y. or **Elizabeth Fox Showerman**. Came to Kalamo Twp., Eaton Co., MI in the 1840's. Was married to **Elizabeth Fox** of N.Y. George died-Elizabeth married **John McDerby**. Both buried in Riverside Cemetery, Bellevue, MI.

Campbell/Lewis. Searching for **David Campbell** born 17 Feb 1813 Madison Co., NY. married **Dorcas Lewis**, born 1833/4 in N.Y.
Barbara (Boyd) Wright, 994 N. Shaytown Rd., Vermontville, MI 49096

Epley. I need to find the death date and location of **Thomas B. Epley** of Brookfield Twp. **Betty Goostrey, 9700 Harris Rd., Olivet, MI 49076**

EATON COUNTY GENEALOGICAL SOCIETY

FINAL QUILT REPORT -- 07-OCT-1996

The winner of the "Township Quilt" is:

Ed Feeny
Brookfield Rd.
Charlotte, MI

Committee Chair: Sher Brown

Committee Members: Mary Jean Baker, Betty Polhamus, Susan Polhamus, Esther Hale, Martha Raths and Vicki Dukes.

A Special Thanks to:

To Mary Jean Baker, the creator of this beautiful, unique quilt. Thanks again for a job well done and for generously making this quilt and giving it to the society so that it can be raffled.

To the other committee members who helped by completing all the state-required forms, getting the tickets separated and stapled, always filling in when they were needed to man a booth either to pick up the quilt, drop it off at the room, make posters, taking pictures - whatever the need...you gals were right there...you were a great group to work with.

Committee members were not the only "worker bees". There were many people who were not on the committee, but I to take this opportunity to publicly thank them for their support.

To Clarence & Shirley Hodges. Early on they saw that some sort of quilt frame was needed and were responsible for requesting a fellow member, LaVern Aves, to make the quilt frame. LaVern is our resident "Civil War Re-enactor" and is an excellent woodworker as well. Thanks again to LaVern for giving us a great way to exhibit this quilt.

To Louis Haley for speaking to service groups to promote the quilt and our society and sell tickets. You were a great help!

To his wife, Gaynell Haley, for also selling many tickets and for being my advise and counsel regarding the ticket handling end of this raffle and giving me much appreciated moral support on doing my very first fund-raiser, ever.

A big thanks also goes to Drouscella Halsey who has also spoke at service clubs when I could not, has went to all of the vending opportunities as well as sold tickets from the office. She was also instrumental on getting television exposure for the quilt from both Channel 6 and Channel 10 News. I also want to take this opportunity to thank Stan Halsey for helping to load and unload that frame and quilt. Stan is always a silent participant and is always helping out our society by loading and unloading a number of things for just about every fund-raiser our society has ever had. To name a few: pop, ice, tables, chairs, books and yes, the quilt and frame. In fact Stan made the hanger for the quilt that was attached to frame and was used every single time the quilt went out.

To Sharlene Thuma, she was a life-saver as she made many calls to get volunteers to help at all of the events that the quilt was taken to as well as worked at these events herself and

selling tickets. A special thanks also goes to Nancy Jourden for handling all of the extra "banking" involved since early spring.

To Betty Polhamus, every time I needed something or someone to help me she was always offering or always said yes. She was my right hand and it was most appreciated. She made posters, helped at almost every flea market and fair that came down the pike and even came on short notice when I could not get anyone else. Betty also took posters put them in shop windows. Betty couldn't be at Appreciation Night because she was visiting her son, but she certainly deserves a big round of applause.

Thanks also to the room volunteers who also helped by selling tickets from the room as well as all of the members who helped sell tickets at all of the fairs, flea markets, etc that was attended by the Society. A special mention goes out to two "hot, ticket-sellers". Sheila Mott at the Olivet Appreciation Days and Martha Raths at Frontier Days. They were both excellent at "working the crowd" in terms of ticket selling. Additional members who helped sell tickets at events were Betty Bolden, Mr. & Mrs. Ed Morey, Vicki Dukes, Kathy Franklin, Joan Wilmore, Violet Geddie, Brenda Tomlinson, Sharlene Thuma, and Sandra Mick to name just a few. There were many who sold room tickets, many more than listed.

I also want to thank all of the members and non-members alike who bought or sold tickets. Just to name a few: Joyce Liepens, a former officer, sold 38 tickets from her antique shop, "Miller's Crossing" to help the "cause" and my neighbor and good friend, Mary Conley, wanted to help out and sold tickets as well. Brenda Tomlinson also very generously had me come and speak at the Lions Club to promote the quilt, she also helped man our booth one day at the Eaton County Fair and sold 50 tickets in her spare time. Great job ladies!

Tickets sold	\$1400.00	Top 4 ticket sellers were:	
Photo on muslin sold	\$ 8.00		
Expenses	\$ 492.39	Louis & Gaynell Haley	132 tickets
Net Profit	\$ 915.61	Vicki Dukes	113 tickets
		Sheila Mott	105 tickets
		Martha Raths	100 tickets

It was announced in the spring that the three pillows would be awarded to the top ticket sellers. Two of the winners preferred a picture on muslin that we have extra of. Since there were four members who sold more than one hundred tickets Martha Raths was also awarded a pillow for her fine efforts. It has been decided that the remaining pillow will be donated to the society to be displayed as a memento of a very successful fund-raiser. Many hours of work have gone into both the making and showing of the quilt as well as the selling of tickets. Many thanks to all who helped with this raffle!

An "appreciation night" was held during our October meeting to honor everyone who was involved in the quilt. Mary Jean Baker was presented with a plaque and flower arrangement and LaVerne Aves was awarded a plaque for his fine woodworking. The quilt winners, Mr. & Mrs. Ed Feeny, were there and coffee and cake was served and pillows were awarded. Again, thanks to everyone for making this fund-raiser such a success. The proceeds for this raffle are being applied to the society computer fund which brings the total to approximately \$2,400.



See What's New in Our Library

Monday-Friday: 10:00 a.m.-2:00 p.m. Monday evening: 6:30-9:00 p.m.

Please call ahead to assure a volunteer will be available: (517) 543-8972.

NOTICE

We will be closed Nov. 28-29, 1996.
Also, Dec. 23, 1996 thru Jan. 3, 1997.

ATLASES:

1873 Eaton Co, MI.....	OS.7
1895 Eaton Co, MI.....	OS.8
1913 Eaton Co, MI.....	OS.9
1873 State of MI.....	OS.77
1874 Seneca Co., OH.....	OS.78

CEMETERIES:

Calhoun Co., MI-

Claredon Twp. (Bentley Corners Cem)	313.6
-------------------------------------	-------

Claredon Twp. (St. Joseph Cem.)..	313.7
-----------------------------------	-------

Lee Twp. (Rice Creek Cem.).....	313.8
---------------------------------	-------

Clarence Co., MI-

"Transcriptions- Small Cem. in Clarence Co., MI", 1993.....	313.9
--	-------

Eaton Co., MI-

Walton Twp. (for sale at library) ..	700.12
--------------------------------------	--------

Van Buren Co., MI-

Paw Paw Twp., vol. 2 (Wildley & Cuddleback Cem.).....	382.4
--	-------

CENSUS, FEDERAL (all MI):

"MI 1870 Census Index, vol. 6 & 7" (counties included: Berrien, Cass, St. Joseph, Van Buren, Branch, Calhoun, Hillsdale, & Kalamazoo).....	300.78
---	--------

1880 Argentine Twp., Genesee Co.	325.8
---	-------

1880 Alas Twp., Genesee Co..	325.9
------------------------------	-------

1870 Van Buren Co. Index.....	382.5
-------------------------------	-------

DIRECTORIES:

Church-

"US Catholic Sources- A Diocesan Research Guide", by Humling, 1995.....	100.153
---	---------

"Address List of Church Archives & Libraries" by Jean M. White,

1993	100.154
------------	---------

St. Mary's 1987, Charlotte, MI	Charlotte.21
---	--------------

St. Mary's 1981, Charlotte, MI	Charlotte.22
---	--------------

City & Rural-

1973, 1983 & undated, Charlotte, MI	Directories
--	-------------

1970 Eaton Co., MI Rural	Directories
--------------------------	-------------

Gene. Societies-

"Federation of Genealogical Socie- ties- 1996 Membership" ..	100.122.2
---	-----------

"Guide to the MI Genealogical & History Collections" by MI Gene. Council, 1996	300.58
--	--------

Phonebooks-

1987/88 Battle Creek Area	Phonebooks
------------------------------------	------------

Lansing & Tri-County Area	Phonebooks
------------------------------------	------------

IMMIGRATION:

"100th Anniversary of German Immi- gration to Detroit 1830-1930"	384.4
---	-------

LANDOWNERS, FIRST:

Ingham Co., MI	333.15
Marquette Co., MI	354.1
Ogemaw Co., MI.....	367.1

MILITARY:

"Geo. E. Ervay Civil War Letters", by Blake Parish.....	406.35
WWII "Blue Star Mother" Album (mostly Eaton Co, MI).....	SB.50

PERIODICALS:

"Evolution of MI Counties 1803-1878" (photocopied from MI History Magazine, Jul 1918, No.3, p27, 606-629	300.77
--	--------

SCHOOLS:**Yearbooks-**

1897, 1912-14, 1916, 1917-21, 1923,
1925-27, & 1949 Charlotte, MI

"Delphian" **SC.504.CH.1**

1917 Lansing, MI "Oracle"

..... **SC.333.SH.1**

Photos-

2) 40th & 50th Reunion, Class of '35,
Charlotte, MI **P483**

18) unidentified- chemistry class,
play production, etc. **P486**

4) Class of 1921 Reunion in 1971,
Charlotte, MI **P487**

11) Composites of Galewood Ele.
1959-1969, Charlotte, MI **P491**

10) Charlotte, MI Public Schools
Faculty, 50's & 60's **P492**

Misc.-

Charlotte H.S., MI- List of 1927 Class
Survivors; 1923 Piano Recital CHS.
Quartette; 1909 Jr. Banquet; 1911,
1913, & 1925 Commencement Ex.;
& 1911 Dinner Prog. **VF530**

College Graduating Class of 1925,
(unidentified) **VF530**

News clippings- 1910-11 girls
basketball; 1912 boys football; &
Classes of 1921-1923 Reunion
..... **VF531**

SURNAMES:

"Hamlin Fam. Hist. In America 1654-
1996", by James Dove **900.HA.03**

"Descendants of John Jacob Koutz
& Sarah E. Christlieb 1790-1995",
by C. Bryant & A. Walker **900.KO.01**

"Descendants of Ebenezer Sawdy &
Ruth Rose- Barry Co. Pioneers", by
Debra Eddy (1996 update) .. **900.SA.01**

Minutes of **Weaver** Reunions 1951-
1962, by R. C. Kiplinger **900.WE.03**

1) group of ladies, Laura Quantrell
mentioned (poss. sewing club) **P481**

10) photos **Treadwell/Rulison/**
Weaver/Kiplinger/Crozier **P484**

2) photos- **Root/Stine** (Charlotte, MI
Centennial); **Hopkins** children... **P488**

4) photos- **King** family **P493**

4) photos- **Johnson & Smurr**... **P494**

4) photos- **lauch/Lipsey/De Boer/**
Wells **P495**

2) photos- **Weyant/Bosworth**... **P496**

Boyer family, group sheets, etc **PCF**

Carman/Shaw/Rulison/Treadwell/
Nichols/Kinball/Allen **PCF**

Rathburn/Hoag/Hoffner **PCF**

Jim Rulison & Charlie Watkins photo
taken in 1911 (photocopy) **VF532**

Adam & Elizabeth Sommers 1851

Family Bible (photocopies) **VF533**

Blodgett New Testament Bible,
(photocopies of contents) **VF536**

Wedding Invitation, **Esselssyn &**
Huston, 1887 **VF538**

Research done for **Gerald Weaver**,
by Mary Jean Baker **VF539**

Huber Fam. Bible (photocopies) **VF542**

Spears Migration Map- Potterville,
MI to Eaton Rapids, MI..... **VF545**

Dilly 1871 Family Bible with **Van**
Houten Records (photocopies)... **VF545**

Randall Fam. Bible, undated (covers
1815-1878) (photocopies) **VF546**

Family Trees of **Hoffner/Hoag** **VF547**

Fam. Tree of **I. P. Rathburn**... **VF548**

VITAL RECORDS:**Deaths-**

"MI Death Index 1867-1874, vol. I, II
& III" **300.65**

Marriages-

"Marriage Records of Calhoun Co.,
MI 1836-1890" **313.5**

MISC.:

"A Medical Miscellaneony for Gene.",
lay & medical terminology **100.155**

MI Manuals, 1949, 1951-58, 1961-
66, 1969-72, 1975-76, & 1979-80
..... **300.17**

Eaton Co., MI Assylum Records
1884-1907 **600.63**

Eaton Co., MI Alssylum & Sanitarium
Records 1907-1927 **600.64**

3) photos- unidentified **P497**



Sharlene Kelley-Thuma, Librarian

President's Letter

It has been almost a year since I became President and I want to take this opportunity to tell everyone that I consider working with such dedicated members and wonderful friends a great privilege. So many people have helped me this year that I want to recap the progress that the society has made and thank everyone who made it all possible.

First of all, I want to thank everyone on the Executive Board. Each and every one of your board members have worked very hard on numerous issues throughout this entire year. All of this work being done at the Executive Board level now results in shorter membership meetings, which allows extra time for the speaker and for socializing. As a team, we have been taking care of day-to-day business as well as a number of special projects such as: A major revision of the by-laws, three fund-raisers were planned and executed over the course of this year and we are now diligently working on a set of policies and procedures. At the January Executive Board the board will also approve our first annual budget. Without this great team effort all of this work could not have been accomplished and they all are to be applauded. Your Executive Board members are: Vicki Dukes, Drouscella Halsey, Debra Eddy, Nancy Jourden, Shirley Hodges, Betty Polhamus, Susan Polhamus, Louis Haley, Sharlene Thuma, Jeanine Parker, Esther Hale and Barb Puffenberger.

As already mentioned the society sponsored three fund-raisers this year: the annual workshop, Frontier Days food and beverage sale and the quilt raffle. These three fund-raisers netted the society approximately \$3,000 of which \$900 (quilt raffle proceeds) have gone toward the Computer Fund and the balance has been deposited in the Society's General Fund. Many members as well as your board members were responsible for the great success of these fund-raisers. You too, deserve a great round of applause as you bought and sold raffle tickets, taken the quilt to various appreciation days, flea markets, service clubs. Many members also helped sell publications at the area book fairs as well as those who baked cookies or sold them for our Frontier Days fund-raiser.

There is another area that is provided by our society: vending opportunities and providing services to our members. A special thank you goes to Drouscella Halsey, our Corresponding Secretary, as she again not only chaired the Frontier Days fund-raiser she also found the time to go to three vending opportunities that the society attends, which is Dutton, The Book Fair at the Lansing Center and the three-

day state seminar in Lansing this fall. Drouscella always packs up her truck and heads out to whatever event that takes place. Drouscella also chaired the Bus Trip to the Allen County Library in Ft. Wayne in November and this is the second Quest she has published, as Barb Puffenberger has been ill.

Earlier in the year a survey was distributed and a number of requests were made: vital records in the Quest, various speaker topics including Ohio research, land records, researching hard to find ancestors just to name a few. Well, those requests are being honored. Vicki Dukes, our Vice President, continues to bring in interesting speakers for our listening pleasure and marriage records are now appearing in the Quest. Other requests named above will be addressed at our April 1997 workshop. You will see more PR about the workshop in the next issue of the Quest. Hope to see you there!

We also have a very exciting project that has been offered to our Society. Mr. Charles Green, owner of the Burkhead-Green Funeral Home has allowed our Society to transcribe all of the funeral home records in his possession. This also includes the funeral home records of previous owners that he has "inherited". I consider Mr. Green a pioneer in this area and hope other funeral homes in our county follow Mr. Green's lead as we go forward.

Our room continues to be open weekdays and on Monday night. A side note: The research room will be closed the day after Thanksgiving as well as the week of December 23 and the week of the December 30 and will reopen on Monday, January 6th. Also, inclement weather is just around the corner so you may want to call ahead to make sure that (weather permitting) the room is open. (517)543-8792.

Another exciting new frontier for our society is the Internet. Please pass along any genealogy addresses or your e-mail address. We will publish them in the Quest. The Executive Board will also be recommending to the membership at the November meeting that the society accept an offer from the Mid-Michigan Genealogical Society to share their Web-site for a \$5.00 monthly fee. If that recommendation is passed as hoped, you may want to visit the web-site. The Ingham County Genealogical Society is also receiving the same offer. The web-site address is:

<http://www.sojourn.com/~nmgs>.





Editor's Page:

Society Phone: 517-543-8792

Fax: 517-543-6999

Hours: 10:00 a.m. to 2:00 p.m.

Staffed by volunteers

During the winter please call to see if we are open due to changes
in the weather.

From the Assistant to the Editor: Drouscella Halsey

I hope that you have found the last two issues of the quest to be interesting and informative. It is a big job to step into the shoes of the Editor and help her during the time of her illness. I would not have been able to do this without the help of some fantastic people. Without the help of Sharlene Thuma and Betty Goostrey, the Quest would have been **Very** late. I am not a pro at the computer, and I had to learn new programs to get the job done.

I would like to thank all of you who are sending materials to be published in the quest. We do have a little problem with the photocopies. We need to have a very high quality copy or an original. Should you send an original, please send a note that you wish to have it returned and not donated. Although we do want to continue to receive donations of pedigree and family group charts. The family bible records are also welcome.

Do you have a **E-Mail Address** ? Our following members would like to list theirs. You may send yours to the society to have it added to our list.

DukesV@state.MI.US

L.Haley@Voyager.Net

SBrown@Voyager.NET

Polhamus@pilot.MSU.Edu

Hodges@Pilot.MSU.Edu

#24 ECQ Quest Index

		Page			
?	Elizabeth	169	Butler	Vernon	157
Ackley	Gerald	175	Caldwell	John	173
Ackley	Geraldine	175	Caldwell	Lillian Ada	171,173
Ackley	Glenadine	175	Campbell	David	180
Ackley	Joyce	175,176	Carlton	A.D.	157
Aldrich	Alta	157	Carlton	L. Mae	157
Aldrich	Alta, Miss	157	Carman		184
Allen	Thomas	154	Carpenter	Berton	151
Allen		184	Carpenter	Bruce	151
Ames	Royal B.	153	Carpenter	Edwin	151
Anderson	Adelaid	160,162	Carpenter	Francis	151
Anderson	Margaret A.	161,163	Carpenter	Frank J.	151
Andruss	Isa	152	Carpenter	Harry	151
Andruss	Samuel	152	Carpenter	Howard	151
Arneric	Inge	155	Carpenter	John	151
Avery	Olive	173	Carpenter	Lawrence	151
Aves	LaVerne	181,182	Carpenter	Miss Sarah	151
Ayers	Cordelia	154	Carpenter	Mrs. Agnes	151
Babbitt	William A.	151	Carpenter	Mrs. Frank	151
Baker	Emeline	154	Carter	Orby	151
Baker	Mary Jean	181,182,184	Carpenter	Oren	151
Baker	Remember	154	Carter	Rholland	151
Baker	Remember, Mrs.	154	Champlin	Louie	150
Baldwin	Asa F.	153	Champlin	Theo	150
Baldwin	Polly	153	Chaney	Christopher	154
Barber	Wm.	167	Chase	Sylvester	154
Baribeau	Dr. Forrest D.	166,167	Chatfield	Rev. Robert	150
Barlond	Ardean	174,175	Childs	H.N.	153
Barlond	Genevive	174	Christlieb	Larmon	153
Barnham	Charles	146	Church	Wayne	174,175,176
Barnum	Henry	153	Church	Sarah E.	184
Barnum	Willis	153	Church	Burton	151
Barrett	John	154	Cogswell	S.S.	154
Barrett	Margaret	154	Cole	Sarah Hudson	151
Beckett	Rev. William E.	150	Conant	Royal T.	152
Belding	Benjamin F.	153	Conley	Lemuel	152,154
Benford	Lucinda H.	173	Count	T.L.G.	149
Bensen	Licius L.	154	Courter	Mary	182
Beverly	Clinton	174	Cowan	Edna	167
Beverly	John	174,175	Cowan	John	152,153
Bibbins	Haze	151	Creller	Thomas H.	152
Blair	Hon. Austin	146	Creller	William	152
Blair	S.	152-153	Creller	Arthur	174,175,176
Blodgett		184	Crozier	Betty	175
Bohannon	Chancy	152	Culkins	Robert	174
Bolden	Betty	182	Cumings	Cecilia	150
Boody	Esq. John	146	Cumings	Betsey Briggs	180
Boody	John	146-7	Cummings	Thomas Jacob	180
Bosworth		184	Darling	Eleim	153
Bowen	Cryus	152	Darrow	Unice Eliz.	154
Boyer		184	Darrow	A., Jr.	153
Boyton	Leonara	172	Darrow	Ann	153
Brackett	Martin S.	152	Darrow	Polly	153
Brenton	Mrs. Oscar	151	Dave	Susan M.	153
Briggs	Betsey	180	Davison	Mrs.	151
Broughton	Mary	180	De Boer	Hellen	163
Brown	Rev. Victor	150	Depew		184
Brown	Sher	181	Depew	Amos	171,172
Bryant	C.	184	Depew	Lemuel	172
Bush	Ben	150	Derby	Lula B.	171,172
Buston	Cyrus	154	Dilts	Dr. W.	146
Butler	Edwin	178	Dobbins	Mary Gordon	184
Butler	Minnie	157	Dobbins	Jacob	164
				Melissa	153

#24 ECQ Quest Index

Dove	James	184	Hale	Violetta Jennie	166,167
Dow	Jno., Jr.	153	Haley	Gaynell	181,182
Dukes	Vicki	181,182,185	Haley	Louis	181,182,185
Dunn	Doris May	155	Hall	Donna	174,175,176
Eddy	Debra	184,185	Hall	Robert	174,175,176
Eddy	Elias	153	Halleck	Major Gen'l	177
Ells	Almina	153	Halsey	Drouscella	150,181,185
Ells	John	153	Halsey	Drouscella Perry	146
Engel	Edith	156,177,179,180	Halsey	Stan	181
Eo'votman (Trotman?)		172	Hamlin		184
Epley	Thomas B.	180	Harris	Estella Stephan	155
Ermertz	Inge	155	Hart	Chas., Mrs.	157
Erway	Geo. E.	183	Hart	Dr.	146-7
Esselssyn		184	Hart	Jesse	146,148
Fairbank	Eliza Maria	153	Hart	Rachel F.	146
Falrbanks	Orrin	153	Hawk	Maru (Polly)	169
Feeney	Mrs.	182	Herrick	Carrie Spicer	150
Feeny	Ed	181,182	Herrick	Cecilia	151
Fetherstone	Peter	153	Herrick	Claude D.	150
Filbert	Evelyn	175	Herrick	Julie	151
Finch	Elias	152	Herrick	Oliver D.	150
Fletcher	William R.	153	Herrick	Robert C.	151
Fordham	Albert	153	Hess	Leona, Miss	157
Fordham	Julia	153	Hill	Edwin Percy	171,173
Fox	Elizabeth	180	Hill	Olive McCalvin	171,173
Franklin	Kathy	182	Hill (McHill?)	George	173
French	Mrs. Lyle	151	Hinkley	Charles	154
Fuller	Jacob	154	Hoag	J., Rev.	157
Fuller	Julia	154	Hoag		184
Galvin	John	153	Hocomb	Catherine	153
Garity	Jean	174,175,176	Hodges	Clarence	181
Garity	John	175,176	Hodges	Shirley	181,185
Garity	Joyce	174	Hoffner	Andrew	168,170
Garity	Lois	174,175,176	Hoffner	Charles A.	168,170
Garity	Marian	174,175	Hoffner	Helen Cynthia	168
Garity	Thomas	174	Hoffner	Jacob	170
Garvey	Charles	151	Hoffner		184
Garvey	Dee	151	Hopkins		184
Garvey	Earl	151	Howard	Hymen M.	173
Garvey	Lloyd	151	Howard	Mary R.	171,173
Garvey	Mrs. Vinnie	151	Huber		184
Garvey	Thomas	151	Hudson	Sarah	151
Garvey	Tom	151	Hughes	D.D.	152
Garvey	William	151	Hughes	D. Darwin	152
Gates	Harriet	154	Hull	Tyler, Dr.	157
Geddie	Violet	182	Hunsiker	H.H.	152
Gilbert	Maria Ann	152	Hunsiker	Silvanus	152
Gilbert	Samuel	152	Hunt	George	160
Gillmore	Millie, Miss	157	Hunt	George F.	161
Gladding	Chester	154	Hunt	Margaret	163
Goostrey	Betty	152	Hunt	Mary Emaline	162
Goostrey	Betty	180	Hunt	S.	163
Gordon	Charles	164	Hurlbert	Zella	157
Gordon	Eliza	164	Huston		184
Gordon	Hugh	164	Hutchinson	Cynthia	168,170
Gordon	John	164	lauch		184
Gordon	Margaret	164	Ingersoll	Alexander	154
Gordon	Mary	164	Ingersoll	E.P.	154
Gordon	Robert	164	Ingram	Ann Elizabeth	171,172
Gordon	Thomas	164	Ingram	William	172
Gordon	William	164	James	Margaret	180
Green	Allen H.	152	Johnson	Mrs. Mildred	150
Green	Charles	185	Johnson	William	153
Haigh	Robert D.	174-176	Johnson	Wm.	154
Hale	Esther	181,185	Johnson		184
Hale	Floretta Josie	166,167	Jones	R.C.	177

#24 ECQ Quest Index

Jones	Rebecca	177,179	Nichol	Mary Ann	173
Jourden	Nancy	182,185	Nichols	Chas. M.	152
Justin	David	165	Nichols	James S.	154
Justin	George	165	Nichols	Johnson J.	154
Justin	George R.	165	Nichols		184
Justin	Hellen Sophia	160,162	Noton	C.E., Mrs.	157
Justin	Jacob G.	165	Palmer	Betsey	170
Justin	James Warren	160,162	Parker	Jeanine	185
Justin	Lucy	165	Parnele	Marilyn	174
Justin	Margarate Adelaide	162	Parnele	Maxine	174
Justin	Mary Adelande	160,161	Partlow	Ethel	171,172
Justin	Nathan	165	Partlow	Orange	172
Justin	Olive	165	Patterson	Arlene D.	168-173
Justin	Rebecca	165	Patterson	Hollis Ballou	168
Justin	Ruben	165	Patterson	Homer	180
Justin	Sophia	165	Peabody	H.	167
Justin	Thomas Franklin	160,162	Pierson	Lou	157
Justin	Thomas P.	160,162,163	Piper	Emma Jane	168,170
Keehne	Alta Mae	174,175	Piper	Marshall Moses	168
Keehne	Elizabeth	174,175	Piper	Sebra	154
Keeler	Lewis E.	180	Poe	Andrew	179
Kelley-Thuma	Sharlene	184	Polhamus	Betty	152,181,182,185
Kenyon	T.E.	152	Polhamus	Susan	181,185
Kinball		184	Potter	Edith Marylyn	166,167
King		184	Pray	Minta, Miss	157
Kiplinger	R.C.	184	Puffenburger	Barbara Green	180,185
Kiplinger		184	Quantrell	Laura	184
Knox	David	154	Raidel	Adam Philip	168,169
Koutz	John Jacob	184	Raidel	Dorian	168
L. Name	F. Name	No	Raidel	Doris Arlene	168
Latshaw	Mrs. O.F.	151	Raidel	John Philip	169
Latson	Joel	153	Raidel	Jonathan W.	168,169
Leisenring	Ina	157	Randall		184
Lewis	Dorcas	180	Rathburn	I.P.	184
Liepens	Joyce	182	Rathburn		184
Lipsey		184	Raths	Martha	181,182
Lovell	Mary Malvina	154	Ray	Hester Ann	171
Lykins	Mrs. Audrey	150	Reeves	Ursula	154
MacEachin	Rev. Father Jerome V.	151	Rinkle	Ettina	157
March	Hiram	154	Ritzman	Andrew	169
Maxon	Sallie	172	Ritzman	Lovina	168,169
McArthur	Nelson	154	Rogers	Lucille	174
McDerby	John	180	Root	Claud William	171,172,173
McKelvey	Christine	173	Root	Fred Earl	171,172
McLachlan	Rev. Angus	151	Root	Joseph	172
McLean	Margaret	164	Root	LaVerne William	171
Mead	Doris	174,175	Root	William E. Maxon	171,172
Mead	Velmon	174,175,176	Root		184
Mead	Verness	174,175,176	Rose	Ruth	184
Meech	Alanson	153	Rugh	Mr.	149
Messenger	Cordelia A.	168,169	Rulison	Jim	184
Messenger	Wilson Lorenzo	168	Rulison		184
Mick	Sandra	182	Sabin	Peter	152
Mills	Mrs. C.H.	146	Sawdy	Evenezer	184
Moe	Ezra	147	Sawyer	Loren	141
Montgomery	June A.	153	Saxton	Ida	141
Moore	Mrs. James	151	Saxton	John S.	141
Morey	Ed. Mr.	182	Schavey	Archie	141
Morey	Ed. Mrs.	182	Schavey	Earl	141
Morris	Hugh Allon	166,167	Schavey	Myrtie	141
Mott	Sheila	182	Schavey	Ola	141
Neff	Daisy	180	Schavey	Wm.	141
Neff	Ella M.	180	Schiltz	C.A.	166,167
Neff	Henrietta	180	Schiltz	E.A.	141
Neff	John	180	Schiltz	Marian	141
Neff	Mary L.	180	Schoff	Elmer	141

#24 ECQ Quest Index

Schoff	Eva	141	Shipman	Miss Emily	141
Schomaker	A.B.	141	Shipman	Mrs. E.D.	141
Schomaker	Rachel	141	Shipp	D.H., Mr.	157
Schoneberger	Catherine	141	Shipp	D.H., Mrs.	157
Schoneberger	J. Harry	141	Shipp	W.H., Mr.	157
Schuart	D.	141	Shoal	Jacob	141
Schuart	Eva	141	Shoal	Jennie	141
Sebring	Albert	141	Showerman	Elizabeth Fox	180
Sebring	Jennie	141	Shuart	D.C.	141
Sedelmaier	John	141	Shuart	Ford	141
Sedelmaier	John, Jr.	141	Shuart	Stella	141
Sedelmaier	Julia	141	Shulters	Ed.	141
Sedelmaier	Margaret	141	Sickels	Alice	141
See	Joel	157	Sickels	John	141
Seeley	Jay B.	180	Siegel	Mrs. Ella M.	141
Seigford	Lucy	157	Sien	Miss Laura	141
Sessions	E.	141	Sikes	George	152
Seymour	Albert D.	141	Simmons	Claude	141
Seymour	Leura	141	Simmons	Essie	141
Shaddock	Adelaide	141	Simmons	Ethel	141
Shaddock	Levi V.	141	Simmons	Harley C.	141
Shaffer	Christina	141	Simmons	Marjorie	141
Shaffer	Emma	141	Simmons	Wm.	141
Shaffer	Geo. E.	141	Simons	Alton	141
Shaffer	Jessamine Bernice	171,172,173	Simons	Burt B.	141
Shaffer	John Benford	171,173	Simons	Frank	141
Shaffer	Marion Clyde	171,173	Simons	Gertrude	141
Shaffer	Peter G.	173	Simons	Jessie M.	141
Shaffer	William E.	141	Simons	Katherine	141
Shafley	Mrs. Zilpha	141	Simons	Lavancia	141
Shane	Anna	141	Simons	Sheridan	141
Shane	Charles	141	Simpson	Lester	141
Shane	D.D.	141	Simpson	Myrtle	141
Shane	L.B.	141	Simpson	Rolland	141
Shane	Lamoin	141	Simpson	Zella	141
Shane	Marguerite	141	Sisco	Blanche	141
Shane	Maude	141	Sisco	Ellis	141
Shane	Minnie	141	Skinner	H.M.	154
Shane	Willard	141	Skinner	Nellie	157
Shane	Willis	141	Skinner	Oramel D.	154
Shaw	Elizabeth H.	141	Smitch	Frank	141
Shaw	Henry W.	141	Smith	Carrie	141
Shaw		184	Smith	E.B.	141
Shay	Carrie	141	Smith	Eliza	142
Shay	Louis	141	Smith	Frank R.	141
Shearer	C.C.	141	Smith	Geo.	142
Shearer	Nellie	141	Smith	Hattie	142
Sheets	Mrs. Rosetta	141	Smith	Ida	142
Shepard	Edith	141	Smith	J.R.	142
Shepard	Erma	141	Smith	Kate A.	141
Shepard	Frank	141	Smith	Mark M.	142
Shepard	Fred	141	Smith	Mrs. A.E.	141
Shepard	Glen	141	Smith	Mrs. Betsey	141
Shepard	John	141	Smith	Myrtilla	142
Shepherd	Abigail	152	Smith	Nettie	157
Shepherd	Albert	152	Smith	Nettie	157
Sherman	Elizabeth	150	Smith	Nina	142
Sherman	Eunice E.	146	Smith	Oscar	142
Sherman	Gaylord	150	Smith	Stephen	142
Sherman	Harold	150	Smith	W.B.	142
Sherman	J.C.	146	Smoke	Abraham	154
Sherman	Julian	150	Smurr		184
Sherman	Lavern H.	150	Snyder	Lorin J.	142
Sherman	Mabel	150	Snyder	Nettie	142
Shipman	J.C.	141	Snyder	Sarah	152
Shipman	Mae	141	Soles	Fred	142

#24 ECQ Quest Index

Jones	Rebecca	177,179	Nichol	Mary Ann	173
Jourden	Nancy	182,185	Nichols	Chas. M.	152
Justin	David	165	Nichols	James S.	154
Justin	George	165	Nichols	Johnson J.	154
Justin	George R.	165	Nichols		184
Justin	Hellen Sophia	160,162	Noton	C.E., Mrs.	157
Justin	Jacob G.	165	Palmer	Betsey	170
Justin	James Warren	160,162	Parker	Jeanine	185
Justin	Lucy	165	Parmeie	Marilyn	174
Justin	Margarate Adelaide	162	Parmeie	Maxine	174
Justin	Mary Adelaide	160,161	Partlow	Ethel	171,172
Justin	Nathan	165	Partlow	Orange	172
Justin	Olive	165	Patterson	Arlene D.	168-173
Justin	Rebecca	165	Patterson	Hollis Ballou	168
Justin	Ruben	165	Patterson	Homer	180
Justin	Sophia	165	Peabody	H.	167
Justin	Thomas Franklin	160,162	Pierion	Lou	157
Justin	Thomas P.	160,162,163	Piper	Emma Jane	168,170
Keelne	Alta Mae	174,175	Piper	Marshall Moses	168
Keelne	Elizabeth	174,175	Piper	Sebra	154
Keeler	Lewis E.	180	Poe	Andrew	179
Kelley-Thuma	Sharlene	184	Polhamus	Betty	152,181,182,185
Kenyon	T.E.	152	Polhamus	Susan	181,185
Kinball		184	Potter	Edith Marylyn	166,167
King		184	Pray	Minta, Miss	157
Kiplinger	R.C.	184	Puffenburger	Barbara Green	180,185
Kiplinger		184	Quantrell	Laura	184
Knox	David	154	Raidel	Adam Philip	168,169
Koutz	John Jacob	184	Raidel	Dorion	168
L. Name	F. Name	No.	Raidel	Doris Arlene	168
Latshaw	Mrs. O.F.	151	Raidel	John Philip	169
Latson	Joel	153	Raidel	Jonathan W.	168,169
Leisenring	Ina	157	Randall		184
Lewis	Dorcas	180	Rathburn	I.P.	184
Liepens	Joyce	182	Rathburn		184
Lipsev		184	Raths	Martha	181,182
Lovell	Mary Malvina	154	Ray	Hester Ann	171
Lykins	Mrs. Audrey	150	Reeves	Ursula	154
MacEachin	Rev. Father Jerome V.	151	Rinkle	Ettina	157
March	Hiram	154	Ritzman	Andrew	169
Maxon	Sallie	172	Ritzman	Lovina	168,169
McArthur	Nelson	154	Rogers	Lucille	174
McDerby	John	180	Root	Claud William	171,172,173
McKelvey	Christine	173	Root	Fred Earl	171,172
McLachlan	Rev. Angus	151	Root	Joseph	172
McLean	Margaret	164	Root	LaVerne William	171
Mead	Doris	174,175	Root	William E. Maxon	171,172
Mead	Velmon	174,175,176	Root		184
Mead	Verness	174,175,176	Rose	Ruth	184
Meech	Alanson	153	Rugh	Mr.	149
Messenger	Cordelia A.	168,169	Rulison	Jim	184
Messenger	Wilson Lorenzo	168	Rulison		184
Mick	Sandra	182	Sabin	Peter	152
Mills	Mrs. C.H.	146	Sawdy	Evenezer	184
Moe	Ezra	147	Sawyer	Loren	141
Montgomery	June A.	153	Saxton	Ida	141
Moore	Mrs. James	151	Saxton	John S.	141
Morey	Ed, Mr.	182	Schavey	Archie	141
Morey	Ed, Mrs.	182	Schavey	Earl	141
Morris	Hugh Alton	166,167	Schavey	Myrtie	141
Mott	Sheila	182	Schavey	Ola	141
Neff	Daisy	180	Schavey	Wm.	141
Neff	Ella M.	180	Schilz	C.A.	166,167
Neff	Henrietta	180	Schilz	E.A.	141
Neff	John	180	Schilz	Marian	141
Neff	Mary L.	180	Schoff	Elmer	141

#24 ECQ Quest Index

Sommers	Adam	184	Stealey	Verda	167
Sommers	Elizabeth	184	Stear	William James	155
Soper	J. Mason	142	Stearns	H.L.	167
Soper	Mary	142	Stearns	Ruth Jutta	155
Southard	Peter	146	Steenwijk	Martin	155
Southworth	Mrs. Helen	142	Steenwyk	Martin	155
Sowerman	George	180	Steffner	Amelia	142
Spears	Carmi	142	Steffner	W.H.	142
Spears	Marjorie	142	Stein	Inge	155
Spears	Mrs. Eliza	142	Stein	Ingrid	155
Spears		184	Stepan	Stefania	155
Spence	Orpha	142	Steve	Henry Frederick	155
Spence	W.C.	142	Stevens	Mrs. Rebecca	165
Spencer	Anna	142	Stilson	Hazel	142
Spencer	Clara	142	Stilson	W.E.	142
Spencer	Elsie	142	Stine		184
Spencer	Forest W.	142	Stokes	Geo. E.	142
Spencer	Fred	142	Stokes	Mrs. David	142
Spencer	Hannah	152	Stoney	Edith	142
Spencer	J.R.	142	Stoney	Wm. J.	142
Spencer	James H.	142	Stover	Blanche A.	142
Spencer	Joseph	142	Stover	Francis E.	142
Spencer	Myrta	142	Stratton	Harry	142
Spencer	Nancy	142	Streeter	Blanche	142
Spencer	T.I.	152	Streeter	Hiram	142
Spencer	Thomas I.	152	Streeter	Lucile	142
Spennney	C.H.	142	Streeter	Marvin L.	142
Spennney	Emma	142	Streeter	Miss Ruth	142
Spicer	Aldora	142	Streeter	Mrs. Alice	142
Spicer	Amos	150	Streeter	N.J.	142
Spicer	Fred	150	Streeter	Orilla	168
Spicer	T.H.	142	Streeter	Ruah M.	142
Spooner	Bert	142	Stringham	S.C.	152-153
Spooner	Evelyn	142	Strobel	Wm. E.	142
Sprague	Mrs. Betsey E	142	Strouse	Chas.	142
Spritzer	Elmer	180	Strouse	Emma	142
Spritzer	John	180	Strouse	Gladys	142
Spritzer	Norman	180	Strouse	Ralph	142
Squires	Doris May	155	Sturdevant	Mrs. Cynthia A.	142
Stackman	Albert William	155	Styles	Ann	152
Stackman	Effie Bell	155	Sullivan	G.W.	143
Stambaugh	Dora	142	Sullivan	Mary	143
Stambaugh	Joe	142	Sullivan	Miss Anna	142
Stanka	A.G.	142	Summers	Augusta	143
Stanka	Edith Mae	142	Summers	J.D.	143
Stanley	Charles	155	Sutherland	Elmer	143
Stanley	C. Alexander Mitchell	155	Sutherland	Ida	143
Stanley	Clara Agnes Ellen	155	Sutherland	Louisa K.	143
Stanley	Norma Harrison	155	Sutherland	Lyman A.	143
Stanley	Sarah Louisa	155	Sutherland	Mrs. Huldah	143
Stanley	Walter Scott	155	Sutherland	Mrs. Lerna	143
Stanton	Bessie	142	Sutherland	Orvel	143
Stanton	Edwin	142	Swarthwood	Orla O.	143
Stanton	Miss Ilma	142	Swarthwood	Rachel A.	143
Stapleton	Robert	155	Swathwood	Albert	143
Stark	Fannie	142	Sweet	A.J.	143
Stark	George W.	142	Sweet	Harriet Melissa	168
Stark	Hiram	142	Sweet	Minnie	143
Stark	John H.	142	Sweet	Miss Maritta	143
Stark	Mabel	142	Sweet	Willard	143
Stark	Margaret	142	Taber	Ettie	143
Stark	Miles E.	142	Taber	Frank A.	143
Stark	Mrs. Charles	142	Taber	Frank A., Jr.	143
Stark	Salina	142	Tabor	Mrs. A. J.	143
Starr	Jerry	174, 175	Talbert	Ralph	180
Starr	Laurel	174, 175	Tarney	Mary Ann	153

#24 ECQ Quest Index

Taylor	Clara	143	Treat	W.F.	143
Taylor	Clyde	143	Treece	Henry	143
Taylor	David	143	Treece	Jennie	143
Taylor	Eli	143	Trowbridge	Emily	143
Taylor	Elizabeth	143	Trowbridge	Frank	143
Taylor	Julia	143	Tubbs	L.C.	143
Taylor	Mabel	1453	Tubbs	Mrs.	175
Taylor	Mrs. Pearl M.	143	Tubbs	Nettie W.	143
Taylor	Orma	143	Tucker	C.J.	144
Taylor	Roy	143	Tucker	Francis	144
Taylor	Wellington	143	Tucker	Miss Alice	144
Teachout	Claude G.	143	Turnbull	Mrs. Emma	144
Teachout	Mabel	143	Turrel	Harmon	153
Teman	Ella	143	Tyler	Laura	144
Teman	George	143	Tyler	Pearl	144
Teman	L.	143	Tyler	Rice A.	144
Teman	Louisa	143	Tyler	Robert S.	144
Teman	Tebe	143	Underwood	Helen	144
Teman	W.B.	143	Underwood	John	144
Thebo	Edward	143	Urie	Don	157
Thebo	Juliaette	143	Valentine	Alta	144
Thmas	Fred	143	Valentine	Ben	144
Thomas	Edgar	143	Valentine	John	144
Thomas	Glada	143	Valentine	Luella	144
Thomas	Jonathan	152	Valentine	Roy	144
Thomas	Mark	143	Van Alstyne	James	144
Thompson	Chas.	143	Van Alstyne	Minnie	144
Thompson	Daisy	143	Van Horn	Ben	144
Thornbury	E.	143	Van Horn	Flora	144
Thornbury	Mary	143	Van Horn	Geo. H.	144
Thornbury	Mrs. Ed.	143	Van Horn	Irene	144
Thornbury	Ralph	143	Van Horn	Mary	144
Thornton	Mrs. T.F.	143	Van Houten	Forest	144
Thuma	Sharlene	181,182,185	Van Houten	Grace	144
Tice	Mrs. Geo.	143	Van Houten		184
Tiggleman	Birney	143	Van Ness	Mrs. Myra	144
Tiggleman	Tillie	143	Vanderbilt	Ella	144
Timple	Ella	143	Vanderbilt	Jessie	144
Timple	Jacob T.	143	Vanderbilt	Walter W.	144
Tingay	Mrs. Mary	143	Vanderbilt	Wm. T.	144
Tingay	Myrtle	143	Vanhauten	Rachel	153
Tingay	William	143	Vanhouten	John	153
Tinkham	J.C.	143	Vaughn	Alex	144
Tinkham	Marie	143	Vaughn	Erma	144
Tinney	Clark	143	Vetter	Frances	144
Tinney	Mrs. Jennie	143	Vetter	Henry	144
Toaz	Clarence H.	143	Vetter	John	144
Toaz	Mrs. T. J.	143	Vetter	Minnie	144
Toaz	Rosa	143	Wager	Harry	144
Toaz	W. H.	143	Wager	Maude	144
Tomlinson	Brenda	182	Waggoner	Mrs. Bertha	144
Topping	Margaret Gordon	164	Wagner	Jane	144
Towl	B.E.	143	Wagner	John	144
Towner	Beulah	143	Wagner	Mrs. J.L.	144
Towner	Harry	143	Waldo	Chas. E.	144
Towner	Hattie	143	Waldo	D.M.	144
Towner	J.I.	143	Waldo	Ella	144
Townsend	T.G.	143	Waldo	Mrs. L.P.	144
Townsend	Rachel M.	143	Waldron	Mrs. Nattie	144
Tracy	Charles	143	Wales	Watson P.	154
Tracy	Florence	143	Walker	A.	184
Tracy	Mrs. Clara	143	Walker	Geo. W.	144
Trask	Capt. W.S.	149	Walker	Mary	144
Trautman	Miss Marie J.	143	Wallace	Katherine	144
Treadwell		184	Wallace	Ward	144
Treat	Louise	143	Walls	Minnie C.	144

#24 ECQ Quest Index

Schoff	Eva	141	Shipman	Miss Emily	141
Schomaker	A.B.	141	Shipman	Mrs. E.D.	141
Schomaker	Rachel	141	Shipp	D.H., Mr.	157
Schoneberger	Catherine	141	Shipp	D.H., Mrs.	157
Schoneberger	J. Harry	141	Shipp	W.H., Mr.	157
Schuart	D.	141	Shoal	Jacob	141
Schuart	Eva	141	Shoal	Jennie	141
Sebring	Albert	141	Showerman	Elizabeth Fox	180
Sebring	Jennie	141	Shuart	D.C.	141
Sedelmaier	John	141	Shuart	Ford	141
Sedelmaier	John, Jr.	141	Shuart	Stella	141
Sedelmaier	Julia	141	Shulters	Ed.	141
Sedelmaier	Margaret	141	Sickels	Alice	141
See	Joel	157	Sickels	John	141
Seeley	Jay B.	180	Siegel	Mrs. Ella M.	141
Seigford	Lucy	157	Sien	Miss Laura	141
Sessions	E.	141	Sikes	George	152
Seymour	Albert D.	141	Simmons	Claude	141
Seymour	Leura	141	Simmons	Essie	141
Shadduck	Adelaide	141	Simmons	Ethel	141
Shadduck	Levi V.	141	Simmons	Harley C.	141
Shaffer	Christina	141	Simmons	Marjorie	141
Shaffer	Emma	141	Simmons	Wm.	141
Shaffer	Geo. E.	141	Simons	Alton	141
Shaffer	Jessamine Bernice	171,172,173	Simons	Burt B.	141
Shaffer	John Benford	171,173	Simons	Frank	141
Shaffer	Marion Clyde	171,173	Simons	Gertrude	141
Shaffer	Peter G.	173	Simons	Jessie M.	141
Shaffer	William E.	141	Simons	Katherine	141
Shafley	Mrs. Zilpha	141	Simons	Lavancia	141
Shane	Anna	141	Simons	Sheridan	141
Shane	Charles	141	Simpson	Lester	141
Shane	D.D.	141	Simpson	Myrtle	141
Shane	L.B.	141	Simpson	Rolland	141
Shane	Lamoin	141	Simpson	Zella	141
Shane	Marguerite	141	Sisco	Blanche	141
Shane	Maude	141	Sisco	Ellis	141
Shane	Minnie	141	Skinner	H.M.	154
Shane	Willard	141	Skinner	Nellie	157
Shane	Willis	141	Skinner	Oramel D.	154
Shaw	Elizabeth H.	141	Smith	Frank	141
Shaw	Henry W.	141	Smith	Carrie	141
Shaw		184	Smith	E.B.	141
Shay	Carrie	141	Smith	Eliza	142
Shay	Louis	141	Smith	Frank R.	141
Shearer	C.C.	141	Smith	Geo.	142
Shearer	Nellie	141	Smith	Hattie	142
Sheets	Mrs. Rosetta	141	Smith	Ida	142
Shepard	Edith	141	Smith	J.R.	142
Shepard	Erma	141	Smith	Kate A.	141
Shepard	Frank	141	Smith	Mark M.	142
Shepard	Fred	141	Smith	Mrs. A.E.	141
Shepard	Glen	141	Smith	Mrs. Betsey	141
Shepard	John	141	Smith	Myrtilla	142
Shepherd	Abigail	152	Smith	Nettie	157
Shepherd	Albert	152	Smith	Nettie	157
Sherman	Elizabeth	150	Smith	Nina	142
Sherman	Eunice E.	146	Smith	Oscar	142
Sherman	Gaylord	150	Smith	Stephen	142
Sherman	Harold	150	Smith	W.B.	142
Sherman	J.C.	146	Smoke	Abraham	154
Sherman	Julian	150	Smurr		184
Sherman	Lavern H.	150	Snyder	Lorin J.	142
Sherman	Mabel	150	Snyder	Nettie	142
Shipman	J.C.	141	Snyder	Sarah	152
Shipman	Mae	141	Soles	Fred	142

#24 ECQ Quest Index

Walls	Ralph Waldo	144	Whipple	Eske	147
Walrous	Mrs. Lura	144	White	Aaron	152
Walsh	Inez	144	White	Edwin	145
Walsh	J.C.	144	White	F.F.	153-154
Walter	C.E.	144	White	Frederick F.	153-154
Walter	Hattie	144	White	George A.	180
Ward	Fay	144	White	George Albert	180
Wareham	Fred	144	White	Jean M.	180,183
Wareham	John	144	White	Mariah M.	152
Wareham	Mary	144	White	Nellie	145
Warner	Queenie Maud	166,167	Whitlock	Mrs. M.E.	145
Watkins	Charlie	184	Whitman	D.W.	145
Watkins	Mary E.	144	Whitman	Maude	145
Watkins	Wm.	144	Whitney	Miss Prude	145
Watson	Addie	144	Whitney	Mrs. E.R.	145
Watson	E.C.	144	Wilcox	Alvera	145
Watson	Ellsworth	144	Wilcox	L.H.	145
Watson	Eva	144	Wilcox	Lorna	145
Watson	Flora E.	144	Wilcox	Wm.	145
Watson	Geo.	144	Wilkinson	Chas.	145
Watson	John H.	144	Wilkinson	Leta	145
Watson	Miss Ona	144	Williams	A.F.	145
Watson	Mnason	144	Williams	Elma J.	145
Watson	Mrs. Lolo	144	Williams	Emily	145
Watson	Rachel	144	Williams	George	145
Watson	Sarah	144	Williams	H.A.	145
Watson	Sarah	172	Williams	John W.	145
Watson	Wm.	144	Williams	Lillian	145
Weaver	Gerald	184	Williams	Mrs. Emma	145
Weaver	Mrs. A.	144	Williams	Nancy	145
Weaver		184	Williams	Peter	146
Weeks	Bessie	144	Williams	Ruth	145
Weeks	E.R.	144	Williams	W.J.	145
Weisterfeldt	Lena	170	Willis	John W.	145
Weisterfeldt	Lewis M.	170	Willis	Minnie	145
Welch	Alta	144	Willis	Mrs. Jennie	145
Welch	Ed	144	Wilmore	Joan	182
Welch	Mary	144	Wilson	Mrs. W.E.	145
Welch	Ray	144	Winfield	Miss L. Bell	145
Wells	D.O.	144	Winfield	Miss Ruby	145
Wells	Hayes E.	144	Wingate	Ernest	145
Wells	Kathrena M.	144	Winnie	Amelia	145
Wells	Nancy	144	Winnie	Geo.	145
Wells	Perry A.	144	Winnie	James	145
Wells	Trelys O.	144	Winnie	Minnie	145
Wells		184	Wise	Amanda	160,162
Welton	Idella	144	Wise	Benjamin	158,159,161,162
Welton	J.A.	144	Wise	Eliza Jane	160
Welton	Miss Grace	144	Wise	Jane Eliza	161
Wener	Ruth Jutta	155	Wise	John	160,161
Wesley	Louis	145	Wise	Mary Adelia	162
West	Bessie	145	Wise	Mary Emeline	160,161
West	Chas.	145	Wise	Rebecca	158,160,161
West	Mrs. Ida	145	Wise	Roby Ann	160,161,162
Wetherbee	Geo. W.	145	Wise	Sarah	160
Weyant		184	Wise	Sarah Sophia	161
Whalen	Anna Bell	145	Wise	Vanreusler	160,161
Whalen	M.A.	145	Wise	William	160,162
Wheaton	Grace	145	Wise	William B.	160,162
Wheaton	Marion	145	Wonnenberg	Emma	145
Wheeler	Louis E.	145	Wonnenberg	Martin	145
Wheeler	Minnie	145	Wood	Alice E.	145
Wheeler	Ralph	145	Wood	Austin	152
Wheeler	Vera	145	Wood	Austin	154
Wheelock	Henry	145	Wood	Royal	152
Wheelock	Margaret	145	Woodis	Chas.	145

#24 ECQ Quest Index

Woodis	Electa	145
Woodis	Helen	145
Woodis	James	145
Wooton	Lotta	145
Wooton	Rev. J.R.	145
Wright	Barbara Boyd	180
Wright	Elbridge	145
Wright	Maud	145
Wright	Miss Alice	145
Wright	Miss Jessica	145
Wright	Mrs. Harriet	145
Wright	Mrs. Luella	145
York	George	145
Young	Mrs. Susie	145
Zimmerman	Haze;	145
Zimmerman	Merl	145
Zubrick	Frances	145
Zubrick	Joe	145
Zubrick	Mike	145