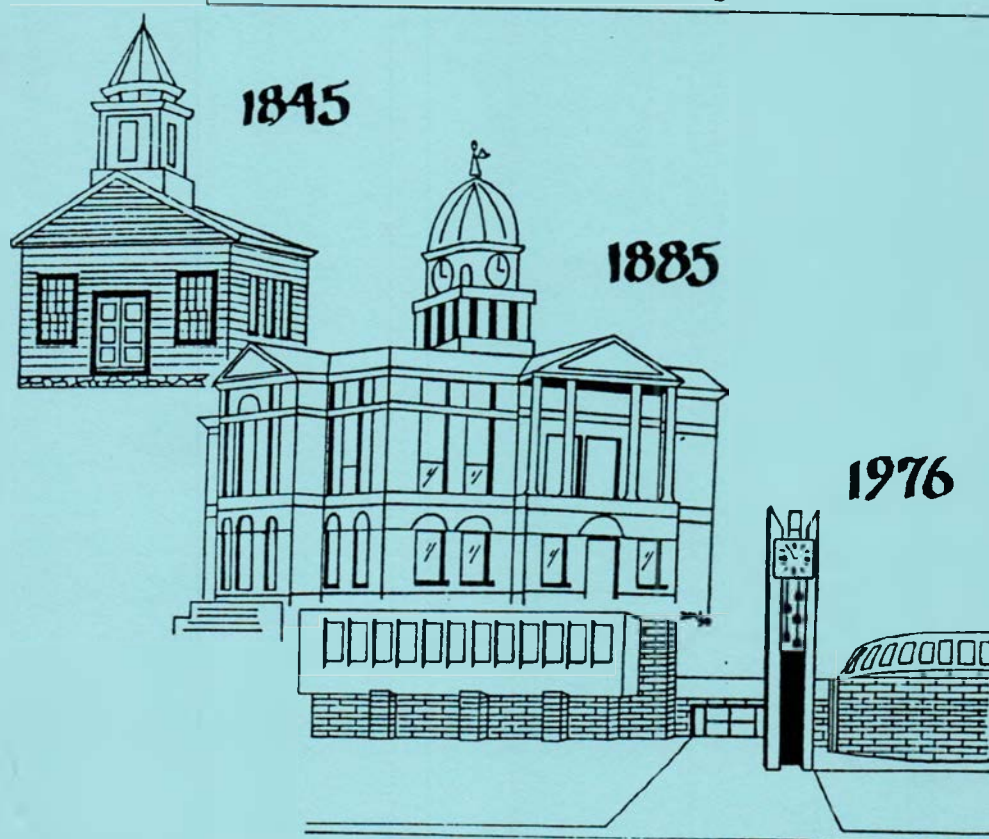


Eaton County Quest

Quarterly Magazine for the Eaton County Genealogical Society
Eaton County, Michigan



ISSUE #20

OCTOBER-DECEMBER 1995

EATON COUNTY QUEST

Issue #20

October - December 1995

Contents

Rural Directory of Eaton County	154
Eaton County Ghost Towns & Other Places	164
Geneal-Anon	173
Olivet College	175
School Day Remembrance/Souvenir	181
New On the Shelves	183
The Charlotte Cemetery Company	185
Pedigree Charts/Cramer-McCall-Williams	191
The Evolution of the "Delphian"/ Part 3	194
Queries	200
Index for 1995 Quest	1-29

Published every January, April, July and October

Membership & Subscription rates per year (begins with January):

- \$15.00 for membership with quarterly publication
- \$17.00 for family membership with quarterly publication
- \$ 5.00 for membership without quarterly publication
- \$10.00 for family membership without quarterly publication
- \$ 4.50 for single or back issues of "Eaton County Quest"

Each October issue contains an all-name index for that year

Material for publication in the "Eaton County Quest" can be sent to Barbara Puffenberger, P.O. Box 337, Charlotte, Michigan 48813-1223.

Include written permission to publish original material. If submitting previously published material, you must obtain the author's written permission for reprint. The "Eaton County Quest" assumes no responsibility for errors in contributed material. Material can be returned to the submitter.

EDITOR

Barbara Green Puffenberger

CONTRIBUTORS TO THIS ISSUE:

Mary Jean Baker
Irene K. Cramer Gibbons
Drouscella Halsey
Nancy Jourden
Barbara Green Puffenberger
Sharlene Thuma

Eaton County Genealogical Society
- 1995 Officials -

President - Shirley Hodges
Vice President - Sher Brown
Treasurer - Nancy Jourden
Corresponding Secretary - Drouscella Halsey
Recording Secretary - Debra Eddy
Council Delegate - Jeannine Parker
Librarian - Sharlene Thuma
Historian - Esther Hale
Publicity - Susan Polhamus

THE FARM JOURNAL ILLUSTRATED
RURAL DIRECTORY
OF
EATON COUNTY
MICHIGAN

(With a Complete Road Map of the County)



COPYRIGHT, 1916

BY WILMER ATKINSON COMPANY

PUBLISHED BY
WILMER ATKINSON COMPANY

PHILADELPHIA

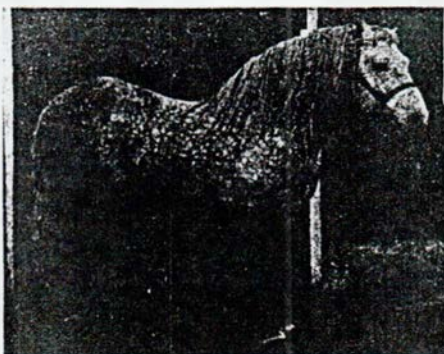
1916

EATON RAPIDS

Hurd, Hugh M. produce dealer Water St.
Hurd, Mary O H&L Water St.
Hurd, W. L. (Esta) dentist O H&L 602 Brook St.
Hurlbert, Fred (Mary) laborer O H&L 328 cor Union & Center Sts.
Huston, E. J. (Edna) veterinarian O H&L 511 S Main St.
Huxley, Edward (Bertha) 5 ch wks woolen mills T 411 N Main St.
Hyatt, Earl (Cleoni) machinist T Lake St.
Hyatt, John (Hettie) farmer T 426 Plain St.
Hyatt, Marvin (Cynthia) O H&L 117 Tompkins St.
Hyde, Bessie A. teacher 223 S Main St.
Hyde, J. R. (Laura) 1 ch physician O H&L 201 cor King & Hall Sts.
Hyde, Mary J. 223 Main St B tel.
Isbell, Laura bds 118 Lansing St B tel.
Isiam, Edward mechanic O H&L W Knight St.
Jackson, Mrs. Sarah (wid C. H.) boarding house T 517 Bentley St.
Jacobs, Ezea (Ann) 1 ch weaver O H&L 612 Jenne St.
Jacox, Ward 3 ch carpenter 202 State & River Sts.
Jamison, Sam'l (Iva) laborer O H&L 223 Brook St.
JENNE, HARRY (Anna S.) cement worker O H&L 612 Water St B tel.
JENNE, L. D. (Martha E.) ret O H&L 130 State St.
Johnson, Frank (Maud) 4 ch wks woolen mills O H&L 320 Lake St.
Johnson, Hiram (Hattie) 4 ch restaurant O H&L 409 Canal St.
Johnson, J. R. (Orra) druggist T 501 cor Forrest & Leonard Sts B tel.
Johnston, Ed. (Ruth) wks woolen mills T 303 King St.
Jones, Mrs. J. W. nurse T 115 E Knight St.
JONES, PETER (Ellen) farmer O H&L 230 Leonard St.
Jopp, Nancy 612 S Main St.
Joslyn, George wks woolen mills T 150 S Main St.
Jowett, Johnson (Anna) 1 ch wks woolen mills O H&L 108 Division St B tel.
Kayler, Monroe (Edna) 1 ch wks cold storage T 909 West St.
Keeler, Robt. (Bertie) garage T 120 N East St.
Kellog, Sarah O H&L 107 Spicer St.
Kelly, Thomas H. (Jessie M.) 3 ch wks woolen mills T cor West & Broad Sts.
Kelly, T. P. (Sarah) ret O H&L 221 Holmes St.
Kemler, Adam (Eliza) farmer O H&L 529 Bentley St.
KEMLER, CLAUDE (Leda) 1 ch clerk O H&L 505 Bentley St.
Kemler, Don (Ruth) electrician O H&L 518 Bentley St.
Kenrick, Harold student 338 Knight St.
Kenrick, L. M. (Nellie) 1 ch wks woolen mills 338 Knight St.
Kimes, John 1 ch ret farmer T 200 Dexter St.
King, Mrs. Belle T cor Osborn & Water Sts.
King, Bernice wks woolen mills cor Osborn & Water Sts.
Kint, Mrs. Lilly canvasser T S Main St.
Kint, Margie student S Main St.
Kiper, Amelia A. 223 S Main St.
Knapp, Charles (Emma) thresher O H&L 905 Maple St.
KNAPP, C. D. 1 ch dry goods O H&L 236 cor E Hamlin & S East Sts B tel.
Knapp, Dorris teacher 410 Canal St.
KNAPP, E. F. (Hattie) ret O H&L 212 E Knight St B tel.
Knapp, Harry wks woolen mills Forest St.
KNAPP, J. F. (Sarah J.) merchant O H&L 410 Canal St B tel.
KNAPP, M. J. (Clara) photographer O H&L Forest St.
Knapp, Ross laborer Forest St.
KNAPP, W. W. (Floss) 1 ch grocer O H&L 118 S East St B tel.
Knowlton, Adelaide O H&L 209 Alice St B tel.
Knowlton, Arthur (Bernice) bookkeeper T 209 Alice St.
Kyes, Sam'l (Lucy) engineer O H&L 432 Plain St.
La Fever, Floyd furniture store 612 S Main St.
LA FEVER, GEORGE ret O H&L 711 S Main St B tel.
Le Fever, G. E. (Beth) 1 ch wks Le Fever & Minnie O H&L 612 S Main St.
Laird, Imo clerk bds 740 Michigan St.
Laird, Ivan 1 ch ticket agent T 740 Michigan St B tel.
Lambert, Frank laborer T 102 S Main St.
Lambert, George wks woolen mills T 102 S Main St.
Landa, James wks woolen mills T 141 S Main St.
Lane, M. E. (Lucy) carpenter O H&L 128 State St B tel.
Lane, Orpha 1 ch 626 Brook St.
La Point, Albert (Julia) T 122 N River St B tel.

FARMERS' DIRECTORY

- Leach, Margaret O H&L 302 Cor E Hamlin & S East Sts.
 Lease, Charles (Julia) 5 ch laborer T 714 Water St.
 Lease, Donald barber 714 Water St.
 Lease, Fannie wks Derby Medicine Co 714 Water St.
 Lease, John (Rebecca) farmer O H&L 449 North St.
 Lee, Florence clerk 625 Michigan St.
 Lee, Harry (Eloise) 2 ch meat cutter T 625 Michigan St.
 Leggitt, Ben. printer 243 Dutton St.
 Leggitt, Catherine O H&L 243 Dutton St.
 Leggitt, Clarence painter 243 Dutton St.
 Leighton, F. S. (Emma) ret farmer O H&L 312 N Main St.
 Leonard, Frank O H&L 123 Cor S River & Hamlin Sts.
 Leonard, James bath house O H&L 106 E Knight St.
 Letts, Grover (Ruby E.) 3 ch wks woolen mills O H&L 330 Dexter St.
 Lewis, Chas. laborer O H&L 526 Michigan St.
 Lewis, Delancy jeweler 807 Water St.
 Lincoln, Mrs. G. H. O H&L 232 State St B tel.
 Lindhorst, Christ. (Bertha) laborer O H&L 238 Market St.
 Lindley, Martha O H&L 502 West St.
 Lindsey, Chas. (Helen) laborer O H&L 312 Cor West & W Elizabeth Sts.
 Lindsey, Frank (Anna) O H&L 608 West St.
 LINDSEY, GEORGE (Eula) grocer O H&L 912 Water St.
 Livingston, Arch. (Josephine) 1 ch carpenter T 1011 Cor Water & Osborn Sts B tel.
 Lockwood, Clare section hand 119 Frost St.
 Lockwood, James (Elma) 2 ch laborer O H&L 119 Frost St.
 Long, D. H. (Fannie) physician T 209 S River St B tel.
 Long, Fred (Addie) 1 ch wks woolen mills O H&L 211 Dexter St.
 Loree, Charles (Alice) ret O H&L 417 River St B tel.
 Lyman, H. B. ret O H&L 110 Cor King & Hall Sts.
 McAllister, J. A. (Eva) farmer O H&L 626 Brook St B tel.
 McAllister, Mrs. Mary T 110 Broad St.
 McAllister, Osear (York) 3 ch baggage master O H&L 619 Brook St.
 McAllister, Wm. (Catherine) painter O H&L 222 Hamlin St B tel.
 McArthur, G. E. (Laura) attorney at law O H&L 123 State St B tel.
 McArthur, Ira, Jr. (May) cigar store O H&L S Main St.
 McArthur, Ira, Sr. (Betsey) O H&L S Main St.
 McClear, Wm. (Anna) liveryman T 519 S Main St.
 McConnell, Myron wks woolen mills 509 Forest St.
 McCullough, Thomas (Maggie) ret H&L 733 Michigan St.
 McDougal, Silas (Sarah) farmer O H&L 230 Hamlin St.
 McFarland, Ann T 423 Minerva St.
 McManus, Henry (Elizabeth) horseman O H&L 320 Dexter St.
 McManus, Maude teacher 320 Dexter St.
 MacKenzie, Donald (Debbie) O H&L 525 Michigan St.
 Mahan, Earl (Ella) railroad section man O H&L 312 Elizabeth St.
 Malerna, Mrs. A. R. O H&L 426 Lansing St.
 Mapes, Earl (Clara) laborer T 419 Minerva St.
 MAPLE, MRS. A. C. 405 Canal St.
 Marple, A. C. (Nellie) 1 ch bakery O H&L 405 Canal St.
 Marple, G. M. (Stella) baker T S Main St B tel.
 Marsh, Watson ret T 141 S Main St.
 Marshall, Grace milliner Spieerville Road.



A State Fair Blue Ribbon Winner.

EATON RAPIDS

Marshall, L. C. (Hazel) 2 ch bds 402 Canal St B tel.
Marshall, Wm. (Ellen) farmer O H&L Spicerville Road.
Martin, Lizzie O H&L 411 Crane St.
Mason, George (Tillie) 2 ch ret O H&L 219 E Knight St.
Mathews, Lena stenographer T 106 S Main St.
Mathias, Wm. laborer O H&L 324 Union St.
Maupin, Hall insurance 419 Canal St.
Maupin, J. E. (Theo) 2 ch commercial traveler O H&L 419 Canal St B tel.
Maupin, Kenneth 419 Canal St.
Meade, W. R. (Lulu) druggist T 237 Cor State & East Sts.
Mellon, Clyde (Mertie) teamster O H&L 111 Tompkins St.
Mellon, Sue 602 Jenne St.
Melon, Chas. (Harriett) teamster T 316 Division St.
Melon, Harry (Alice) wks gas co T Brook St.
Mendell, Ed. (Effie) 1 ch mail carrier O H&L 227 E Knight St B tel.
Mendell, Fred. (Lillian) dry goods O H&L 119 S River St.
Mendell, Stanley wks woolen mills 227 E Knight St.
Merritt, Chas. E. (Gertrude) 2 ch buys cream T 106 N River St.
Merritt, Fred. (Maggie) 1 ch laborer T 200 Dexter St.
Merritt, Gardie (Maude) 2 ch teamster T S Main St.
Merritt, Mary T S Main St.
Merritt, Roy teamster S Main St.
Mest, Harry commercial traveler 107 E Knight St.
Milboarne, Clark (Belle) 1 ch wks woolen mills T 505 Osborn St.
Milbourne, Curtis (Mabel) 3 ch wks woolen mills 721 Michigan St.
Milbourne, D. S. ret farmer Cor River & State Sts.
Milbourne, Elmer (Fannie) 2 ch farmer O H&L Water St.
Milbourne, Harry clerk Cor River & State Sts.
Milbourne, H. J. (Eliza J.) attorney O H&L King St.
Milbourne, John J. (Anna) druggist O H&L 319 Cor River & State Sts B tel.
Miller, Amos (Malinda) ret O H&L 509 Osborn St.
Miller, Bird (Lois) 1 ch fur buyer T 229 Dexter St.
Miller, Conrad (Anna) restaurant O H&L 119 Lansing St.
Miller, Curtice laborer 509 Osborn St.
Miller, D. G. (Minnie) 1 ch farmer & mfr ice cream O H&L State St.
Miller, E. L. (Georgiana) 1 ch carpenter T 708 Hall St.
Miller, Frank (Margaret) farmer O H&L 315 Crane St B tel.
Miller, George farmer State St.
Miller, Gorden (Hazel) wks woolen mills 708 Hall St.
Miller, Heilaman (Violet) T 415 Canal St.
Miller, Herbert machinist 509 Osborn St.
Miller, Isaac ret farmer 449 North St.
Miller, Jacob (Huldah) canvasser O H&L 416 Minerva St B tel.
Miller, Jessie stenographer 119 Lansing St.
Miller, John laborer S East St.
Miller, Loren (Ella) 5 ch laborer O H&L 1209 Chester St.
Miller, L. E. (Marion) carpenter O H&L 302 Cherry St.
MILLER, MARILLA O H&L 417 North St.
Miller, Norton (Alice) 3 ch mail carrier O H&L 430 Minerva St B tel.
Miller, P. E. laborer 430 Minerva St.
Miller, Ray (Nellie) 1 ch laborer T 314 N East St.
Miller, Rhea student State St.
Miller, Saml. 5 ch laborer O H&L S East St.
MILLER, SAMUL. (Mary) farmer O H&L 301 Broad St.
Miller, Verna teacher 417 North St.
MINGUS, THOMAS (Marion) shoe dealer 222 S River St. See adv.
Minnie, H. C. (Edith) hardware T 711 S Main St.
Mitchell, Robt. (Ann) wks woolen mill's T 329 W Knight St.
Mix, E. F. (Carrie) feed mill O H&L 115 S River St.
Mouroe, Frank farmer T Jackson St.
Montgomery, Art painter 126 N East St.
Montgomery, Clifford (Belle) milkman O 519 Wood St B tel.
Montgomery, Ella (wid Alex.) O H&L 402 Canal St B tel.
Montgomery, O. J. (Ella) T 517 Clark St.
Moore, C. J. (Grace) 1 ch implement dealer T 205 Brook St.
Moore, Ernest (Lena) 1 ch clerk O H&L 411 S River St.
Moore, F. B. (Violet) electric engineer 248 cor Main & Spicer Sts.
Morris, Frank (Alta) 2 ch farmer T W Broad St.
Morrison, Edward ret 102 cor N East & E Knight Sts.

FARMERS' DIRECTORY

- Morrison, Fred (Irma) O H&L 102 cor N East & E Knight Sts.
- Moulton, H. J., Jr. drayman 116 N East St.
- Moulton, H. J., Sr. (Mildred) 1 ch com traveler O H&L 116 N East St B tel.
- Munn, Scott asst postmaster 110 E Knight St.
- Murphy, F. Q. (Genevieve) com traveler O H&L S Main St.
- Myers, George (Emma) T 120 S River St.
- Nadell, Henrietta 121 Tompkins St.
- Naracoon, James (Rosa) 1 ch laborer O H&L 504 cor Forest & Dutton Sts.
- Nash, Steven ret O H&L 123 Tompkins St.
- Newman, Albert (Emma) barber 211 cor King & Montgomery Sts.
- Nichols, D. W. (Mary) wks woolen mills O 417 N East St B tel.
- Nichols, George (Alice) wks woolen mills O H&L Dexter St.
- Nisbett, A. W. (Ida) jeweler O H&L 238 State St.
- Noble, George B. ret O H&L 211 Holmes St.
- Norris, Saphronia T 434 Minerva St.
- Norton, George W. 1 ch ret O H&L 695 S Main St B tel.
- Novis, Robt. (Mary E.) jeweler O H&L Center St.
- Numbers, Harriet O H&L 615 Montgomery St.
- O'Brien, Wm. (Annie E.) gardener O H&L 602 State St.
- Olmstead, H. B. ret farmer O H&L 708 Montgomery St.
- Olney, Mrs. E. A. 1 ch O H&L 532 Bentley St.
- Olney, Miss Veda bookkeeper 532 Bentley St.
- OSBORN, F. A.
- Otto, Leva O H&L 131 N River St.
- Otto, Wm. (Grace) 1 ch wks woolen mills T 135 N River St.
- Overfield, E. E. (Madeline) ret doctor O H&L 1114 S Main St B tel.
- Owen, Frank (Nora) janitor O H&L 1002 cor Park & Hull Sts.
- Owen, Wm. (Lilly) 3 ch stock buyer 306 Dexter St.
- Palmer, C. L. (Pearl) banker O H&L 215 cor Plain & Montgomery Sts.
- Parker, F. H. (Maria) ret O H&L 435 Minerva St B tel.
- Parks, Charles clerk 106 Brook St.
- PARKS, JAMES (Alice) dry goods O H&L 106 Brook St B tel.
- Peck, Chas. E. (Ida M.) ret farmer O H&L 903 Chester St.
- Pember, Don (Anna) bookkeeper T N Main St.
- Perkins, E. J. (Nettie) 2 ch laborer O H&L 414 N East St.
- Perkins, Howard V. (Edith) com traveler 221 cor S River & Holmes Sts.
- Perry, James (Jennie) thresher O H&L 219 Dutton St B tel.
- Perry, James ret O H&L 323 Crane St.
- Peterson, Ed. farmer State St.
- Peterson, Gertrude 5 ch 444 Minerva St B tel.
- Petrie, Mrs. Pearl (wid Noel) O H&L 524 Bentley St B tel.
- Petrie, Miss Susie bookkeeper 524 Bentley St B tel.
- Pettit, Harold (Marie) furniture T 224 Holmes St.
- Phillip, Charles student 202 cor Alice & Hall Sts.
- Phillip, Elmer student 202 cor Alice & Hall Sts.
- Phillip, George W. (Edith) 4 ch mail carrier O H&L 202 cor Alice & Hall Sts B tel.
- Phillips, George E. (Anna) ret 920 S Main St.
- Phillips, J. W. (Mertie) farmer T 215 S River St.
- Pickett, Warren (Louise) ret O H&L 920 cor Park & Hall Sts.
- Pierce, Jane E. (wid D. B.) O H&L 902 Water St B tel.
- Pinch, J. O. (Anna) farmer O H&L 201 cor N River & Union Sts.
- Pixley, Margaret stenographer 134 N Main St.
- Pixley, Nora O H&L 134 N Main St.
- Pollard, Gene (Gertrude) laborer O H&L 528 Wood St.
- Pollard, Lucien (Laura) 3 ch farmer O H&L 542 Wood St.
- Pollard, William (Lillian) 2 ch sheep shearer T 538 Bentley St.
- Porter, John (Edna) wks Bell Tel T Water St.
- Porter, S. (Ida) dentist 238 Dutton St.
- Post, Henry (Ida) ret O H&L 809 S Main St.
- Post, Josephus (Elizabeth) ret farmer O H&L 515 West St.
- Post, Lulu 2 ch T Mill St.
- Post, Roy laborer Mill St.
- Pratt, Lewis (Lydia) O H&L 626 Spicerville Road.
- Prosser, S. C. (Georgia) blacksmith T 210 W South St.
- PUFFENBERGER, HENRY (Mary) teamster T 702 S Main St.
- Puffenberger, Wm. dentist O H&L 702 S Main St.

EATON RAPIDS, -

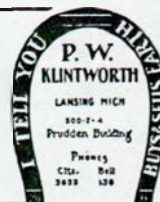
Putnam, John painter O H&L 401 State St.
 Railer, R. M. (Lena) 3 ch blacksmith T 203 Brook St.
 Ramsey, Dell (Bessie) mail carrier 114 E Knight St.
 Ramsey, Eldora O H&L 615 Brook St.
 Ramsey, Hazel G. teacher 211 E Knight St B tel.
 Ramsey, John (Theresa) hardware O H&L 211 E Knight St B tel.
 Ramsey, L. W. ret O H&L 605 Hall St.
 RANDALL, JOHN (Bessie) O H&L 908 Water St.
 Randell, Bert (Lottie) 2 ch clerk O H&L 107 E Plain St.
 Rank, Edward (Ada) com traveler T 114 cor Broad & Hall Sts.
 Rank, Elton laborer 214 cor Broad & Montgomery Sts.
 Rank, Frank (Carrie) harnessmaker O H&L 214 cor Broad & Montgomery Sts.
 Rathbun, Bertha teacher 115 Cor Hall & Plain Sts.
 Rathbun, Brace (Mary) mail carrier O H&L 115 Cor Hall & Plain Sts.
 Rathbun, Jane teacher 115 Cor Hall & Plain Sts.
 Rathbun, Louis (Mabel) 3 ch baker T 402 Cor S Center & E Knight Sts.
 Raymer, Clyde (Vera) clerk T 115 E Knight St.
 Raymer, Floyd (Mamie) building mover O H&L 5 N East St B tel.
 Raymer, Jay (Jennie) 6 ch teamster O H&L 602 River St.
 Raymer, John (Margaret) farmer O H&L 401 Cor N Center & E Knight Sts.
 Raymer, Ned (Addie) teamster O H&L 304 N East St.
 Raymer, Ralph (Alice) 1 ch teamster O H&L Diana St.
 Reason, Laura O H&L 322 E Knight St B tel.
 Reece, Bion laborer 316 Dexter St.
 Reese, Mrs. Electa O H&L 316 Dexter St.
 Reeves, Amelia O H&L 236 Brook St.
 Rew, Grace 111 N River St.
 Reynolds, Emma (wid Steve) O H&L 618 Spicerville Road.
 Reynolds, George (Phoebe M.) laborer O H&L 107 River St.
 Reynolds, H. F. merchant 123 N East St B tel.
 Reynolds, R. H. (Clara E.) O H&L 125 Division St.
 Rhead, Robt. farmer O H&L 131 Cor E Knight & River Sts B tel.
 Rice, Frank (Mary E.) farmer O H&L 302 Cor Plain & Montgomery Sts.
 ROBINSON, FLOYD (Genevieve) clerk T 515 Canal St.
 Robertson, Sidney (Anna) farmer T 310 Dutton St.
 Rodman, Dora 110 Cor King & Hall Sts.
 Rogers, David ret O H&L 418 Canal St.
 Rogers, Earl (Ona) 2 ch section hand O H&L 306 Hale St.
 Rogers, Guy (Fannie) bank clerk O H&L 231 E Hamlin St.
 Rogers, Henry laborer O H&L 224 State St.
 Rogers, James (Bessie) 5 ch carpenter O H&L 404 Osborn St.
 Rogers, La Grand (Edith) 418 Canal St.
 Rogers, Nellie clerk 224 State St.
 Rogers, N. S. (Rebecca) wks woolen mills O H&L 511 Lake St.
 Rolls, R. C. (Rose) veterinarian O H&L 325 W Knight St.
 Root, Julius (Cora) 3 ch laborer O H&L 111 N River St.
 Root, Orla (Belle) wks woolen mills O H&L 423 North St.
 RORABECK, SCOTT (Cora) O H&L 317 Cor West & Plain Sts.
 ROSE, G. A. (Amanda) laborer 716 Vaughn St.
 Rose, Mary O H&L 1010 S Main St.
 Royston, Grover (Della) 1 ch teamster T 215 Dexter St.
 Rulison, Robt. (Capitola) printer O 805 S Main St.
 Rushton, Maggie O H&L 210 S River St.
 Rushton, Marion student 210 S River St.
 Ruskowsky August (Ginta) shoemaker O H&L 1015 Hall St.
 Russell, E. clerk 209 Brook St.
 Russell, George (Myrtle) insurance agent O H&L 209 Brook St B tel.
 Russell, Katie student 402 Elizabeth St.
 Russell, Vina O H&L 402 Elizabeth St.
 Sage, Paul (Ethel) traffic mgr woolen mills T Water St.
 SANDOLANCK, E. B. 210 E Plain St.
 Saurers, Sarah bds 325 Canal St.
 Savage, S. P. (Dorothy) millinery T N Main St.
 Sayers, Keziah 306 Elizabeth St.
 Sayles, Vern delivery man Diana St.
 Schwied, John (Louise) garage T S Main St.
 Scott, A. N. chauffeur T 137 S Main St.
 Scott, I. E. (Viola) 1 ch carpenter T 131 Main St.
 Scott, J. P. (Delia) drayman O H&L 230 Market St.
 Scriptor, Ernest farmer 310 Lansing St.
 Scriptor, R. W. (Euphemia) railroad employee O H&L 310 Lansing St.
 Scriptor, Samuel (Mary) 3 ch section foreman O H&L 906 Hall St.

FARMERS' DIRECTORY

- Searfoss, John (Ella) 2 ch ret O H&L 802 Water St.
 Seelye, George (Roxie A.) farmer O H&L 110 Brook St.
 Seelye, J. M. (Alice) 2 ch wks woolen mills O H&L 426 Minerva St.
 Seelye, Lena A. 220 Brook St.
 Seelye, Wm. (Sally) farmer O H&L 220 Brook St.
 Segar, Chas. (Nellie) T 205 Broad St.
 Segar, Genevieve teacher 205 Broad St.
 Segar, Grace teacher 205 Broad St.
 Segar, Marie teacher 205 Broad St.
 Shaw, B. E. O H&L 1020 West St.
 Shaw, Edward marble cutter T 143 S Main St.
 Shaw, Mikred 1020 West St.
 Shaw, Victor clerk Cor Michigan & Canal Sts.
 Sheets, A. G. physician T 331 W Knight St B tel.
 Sheets, Charity 331 W Knight St.
 Sheets, Dora 101 Dexter St B tel.
 Sheldon, J. W. (Lois) ret farmer O H&L 221 State St.
 Sherman, Wm. laborer T S Main St.
 Shillito, Sarah 111 Plain St B tel.
 Shirk, M. miller 242 Main St.
 Shoup, Edgar (Edith) 4 ch laborer O H&L 407 Dutton St.
 Shoup, Nelson (Lucy) carpenter O H&L 411 Dutton St.
 Shufelt, Daniel (Eva) T 332 Canal St.
 Shufelt, Marie student 332 Canal St.
 Shuts, Donald student 101 Dexter St.
 Sibra, E. L. T 520 West St.
 Simmons, Arthur (Mae) wks woolen mills T 520 Wood St.
 SIMMONS, W. L. (Ethel) 2 ch night watchman O 732 Michigan St.
 Skinner, John (Melvina J.) ret farmer O H&L 716 Hall St.
 Slaght, Frank (Nettie) blacksmith T 411 Plain St.
 Slates, Lydia O H&L 218 Holmes St.
 Slayton, Frank (Adelaide) laborer O H&L 706 Water St B tel.
 Slayton, F. J. 1 ch attorney at law T 122 N Main St.
 Slee, Rev. W. W. (Tillie) minister T 200 cor W Plain & Hall Sts Eaton Rapids B tel.
 Slentz, Henry ret bds 243 Cor S East & Leonard Sts.
 Slentz, Jesse (Mary) 6 ch wks woolen mills O H&L 243 Cor S East & Leonard Sts.
 Slocum, Lida (wid C. D.) O H&L 329 Dexter St.
 Small, Warner (Inez) 3 ch T 325 Canal St.
 Smith, Albert (Agnes) wks woolen mills O H&L 614 Michigan St B tel.
 Smith, Carl (Marie) cold storage & creamery O H&L 233 Cor E Knight & N East Sts.
 Smith, Clarence (May) 2 ch carpenter O H&L 324 Dexter St.
 SMITH, C. D. government employe 215 State St.
 SMITH, C. E. horse breeder 122 Hall St. See adv.
 Smith, C. E. (Lizzie) 1 ch livery T 302 S River St.
 SMITH, HATTIE 323 South St.
 SMITH, H. W. tires & tire repairing. See adv.
 Smith, L. J. (Rose) mfr O H&L 404 cor State & Forest Sts.
 Smith, Max (Gertrude) 1 ch auto repair O H&L 616 Water St.
 Smith, Mrs. R. O H&L 215 State St.
 Smith, William (Fronia) farmer & dentist 536 Canal St.
 Smith, Willis wks woolen mills O H&L 128 Center St.
 Snow, Alice 233 Leonard St.
 Snow, J. W. (Mary J.) cement wrkr O H&L 233 Leonard St.
 Snow, Wm. (Mary E.) 3 ch wks woolen mills 233 cor E Union & N East Sts.
 Snyder, Chester gardener 154 S Main St.
 Snyder, George (Della) 1 ch butcher T 202 cor State & River Sts.
 SNYDER, G. BEN (Hattie E.) optometrist O H&L 127 N Main St. See adv.
 Solomon, Abe candy kitchen T 214 S Main St.
 Soule, E. H. (Effie) restaurant T 156 S Main St.
 Soule, Rolland (Pearl) 1 ch wks woolen mill O H&L 323 Dutton St.

LIST

Your City PROPERTY and
 FARMS with us, if you
 wish a quick sale



EATON RAPIDS

Spaulding, Miles (Minerva) 4 ch wks
woolen mills O H&L 1102 cor S Main
& Alice Sts.

Speer, Elwin laborer 302 Elizabeth St.

Speer, Homer laborer 302 Elizabeth St.

Speer, Scott (Ellen) laborer O H&L
508 West St.

Spcer, Wm. (Jennie) teamster T 302
Elizabeth St.

Spencer, Edward ret farmer O H&L 410
Plain St.

Spicer, Charles (Sarah) wks woolen mills
T 538 Bentley St.

Spicer, Clay (Etta) ret T 242 Main St.

Sprague, Clare (Lida) 4 ch laborer O
H&L 304 W Elizabeth St.

Sprague, Effie 605 Hall St.

Sprague, H. C. (Sylvia J.) carpenter O
H&L 911 S Montgomery St.

SPRINKLE, BERTHA teacher 300 cor Alice
& Montgomery Sts.

Sprinkle, Clyde (Jennie) 2 ch ex agent
O H&L 212 State St.

Sprinkle, Louisa O H&L 300 Alice St.

Stall, T. A. (Melissa) 1 ch laborer O
H&L 1315 Water St.

STRAYER, R. H.

Steffy, Henry (Prudence) laborer T 102
S Main St.

Stewart, Bessie bookkeeper 209 S East
St.

Stimson, C. A. physician O H&L 722 S
Main St.

Stirling, Helen teacher 315 S Main St.

Stirling, J. W. (Mary) grocer O 315 S
Main St B tel.

Stirling, Orra 120 N East St B tel.

Stoddard, Owen (Floss) clothier O H&L
710 Water St.

Stone, H. A. (Anna) junk dealer O H&L
130 Frost St.

Stowell, J. wks McClearys office cor Os-
born & Water Sts.

Strank, Eugene (Alice) farmer O H&L
120 State St B tel.

Strank, George (Thera) farmer O H&L
303 S Main St.

Stringham, Clifford (Grace) real estate
T cor E South & Jackson Sts.

Strong, Frank clerk 201 S River St.

STRONG, N. A. (Mary) 1 ch grain feed
& beans 201 S River St. See adv.

Strong, Paulina 224 Brooks St.

Strong, Rhoda student 201 S River St.

Strong, Susie O H&L 410 Minerva St.

Stroud, M. P. (Ada) asst cashier 1st Nat
Bank T 515 S Main St.

Stuart, Fred (Emaline) carpenter O
H&L 1108 Water St.

Stuart, John (Hattie) 1 ch laborer O
H&L 237 Leonard St.

Stump, F. M. (Maggie) laborer O H&L
709 Spicerville Rd.

Sumerix, Mrs. E. O H&L 503 State St B
tel.

Swank, Howard laborer 785 Michigan St
B tel.

Swank, Theodore (Mattie) O H&L 785
Michigan St B tel.

Sweet, John (Laura) wks woolen mills
O H&L 418 W Broad St.

Sypes, Harry (Ida) 3 ch mason T Mill
St.

Terpning, George (Ona) laborer T 302
cor State & East Sts.

Terry, Rhea student 237 S Main St.

Terry, W. H. (Ida) 1 ch ret farmer T
237 S Main St.

Thompson, A. J. (Anna) carpenter O
H&L 214 Dutton St B tel.

Thompson, John (Alice) ret O H&L 614
Spicerville Rd.

Thompson, Mary J. 737 Michigan St B
tel.

Thompson, Selden (Lucy) 1 ch farmer
O H&L 330 Knight St.

Thuma, Angeline O H&L 919 cor Park
& Hall Sts.

Tingley, Allen (Rebecca) ret O H&L
332 Crane St.

Tingley, Charles (Bertha) O H&L 204
cor Crane & N East Sts.

Tingley, Elmer (May) laborer 310 N
East St.

Tingley, Henry (Maggie) spinner T 322
N East St.

Tingley, Leonard laborer 332 Crane St.

Tingley, Wm. laborer 332 Crane St.

Topliff, Carrie O H&L 205 King St.

Topliff, Homer laborer 909 West St.

Towns, Arlo (Eva) wks creamery 221 E
Knight St.

Towns, Noah (Eunice) 2 ch laborer O
221 E Knight St B tel.

TOWNS, VERN 2 ch clerk T 306 State St.

Tracy, Eugene (Mary) wks woolen mills
T 545 Canal St.

Tracy, William delivery clerk bds 545
Canal St.

Tracy, William (Harriet) junk dealer
545 Canal St.

Trimble, Maria O H&L 710 Hall St.

True, T. B. (Fannie) mfr wagon racks
O H&L 216 S River St.

Tucker, George (Ruth) engineer 220
Dutton St.

Tucker, Leone (Clara) laborer T 423 Mi-
nerva St.

Turner, Wm. (Zella) 5 ch farmer O H&L
5 N East St.

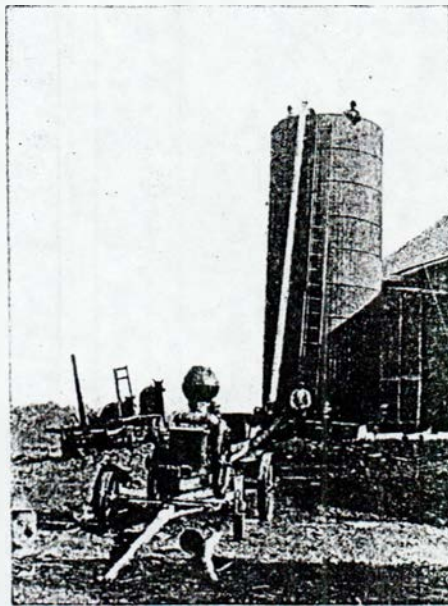
Tuter, Harold wks woolen mills T N
Main St.

FARMERS' DIRECTORY

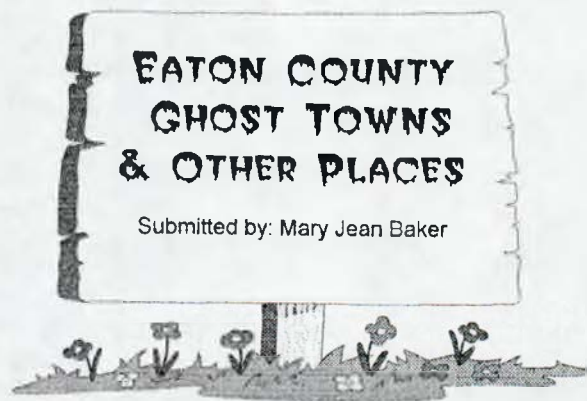
- Tuter, Bright wks woolen mills N Main St.
 Umfrey, E. C. (Catherine) mason O H&L 215 Center St.
 Upright, F. C. (Mary) blacksmith T 203 Brook St.
 VAN ALLEN, D. D.
 Van Allen, Emma O H&L 611 Montgomery St.
 VAN ALLEN, FOREST.
 Van Anken, Floyd (Grace) 4 ch barber T 213 S Main St.
 Van Anken, Luther cook T 120 S Main St.
 Van Deusen, Alma teacher N Main St.
 Van Deusen, E. H. (May) St Oil agent T 305 Broad St B tel.
 Van Deusen, James (Ida) dealer in oil O H&L 408 N Main St.
 Van Gorden, Wm. (Florence) ret farmer O H&L 129 cor State & River Sts.
 Van Shoten, George laborer 201 N River St.
 Vanstella, Jacob celery grower T 429 North St.
 Vanstella, Lennett celery grower O H&L 429 North St.
 Vanstella, Mrs. L. 429 North St.
 Vanstella, Marine celery grower O H&L 429 North St.
 Vanstella, Susie 429 North St.
 Van Wagoner, Roy 2 ch T 1016 West St.
 Vorce, Clara O H&L 910 Hall St.
 Vorce, Roy (Edna) 3 ch farmer T 726 North St.
 Wagner, Charles (Scena) farmer O H&L 5 N East St.
 Wagner, W. D. (Anna) clerk O H&L 110 E Knight St.
 Waldrige, Mrs. O H&L 309 Crane St.
 Waldron, Andrew (Emma) farmer O H&L 918 West St.
 Walker, Alice dressmaker cor West & Broad Sts.
 Walter, Charles (Charlotte) laborer O H&L 210 Broad St.
 Walter, Daniel (Adaline) O H&L 201 cor Broad & Hall Sts.
 Walter, David ret O H&L 215 Alice St.
 Walter, Hattie O H&L 208 S East St B tel.
 Walter, Mary O H&L 225 Holmes St B tel.
 Walton, Ray (Mary) laborer T S Main St.
 Ward, Bert (May) painter T 331 cor E Crane & N Center St.
 Weaver, Lulu 1 ch dressmaker T 303 Canal St.
 Webber, Clifford (Hazel) 1 ch clerk 209 cor E Plain & Water Sts.
 WEBBER, F. B. 1407 Water St.
 Webber, James (Rachel) poolroom T 117 N Main St.
 Webber, Saml. (May) mechanic O H&L Water St.
 WEBSTER, H. P. (Sarah J.) lumber, coal & ice O H&L 114 S River St B tel. See adv.
 Webster, Wm. (Gertrude) 2 ch lumber dealer O H&L 118 Brook St B tel.
 Well, Henry (Ruth) ret O H&L 303 King St.
 Well, Nicholas farmer O H&L 610 Vaughn St.
 Wells, Chas. (May) carpenter O H&L Hale St.
 Wells, Daniel (Cora) wks woolen mills O H&L 508 Michigan St.
 Wells, John (Eugene) laborer O H&L 1001 Water St B tel.
 Wentworth, Elsie O H&L 324 Canal St.
 West, Hallet 232 State St.
 Wheeler, D. D. (Adele) laborer O H&L 124 Division St.
 Wheeler, I. J. (Safy) teamster O H&L 310 River St.
 Wheeler, Nelson W. (Mary) ret T 302 E Hamlin & S East St.
 Wheeler, R. E. ret O H&L 120 Frost St.
 Wheeler, Sarah O H&L 712 Hall St.
 WHIPP, CHARLES E. (Frances) ret farmer O 531 Canal St B tel.
 Whipp, Donald V. student 531 Canal St.
 White, Hiram S. (Anna) laborer 423 Minerva St.
 Whitehead, Cleopatra student 216 E Knight St.
 Whitehead, Earl M. student 216 E Knight St.
 Whitehead, T. C. (Belle) Bijou Theatre T 216 E Knight St.
 Whitman, Gertrude dressmaker T 126 N East St.
 Widger, Frank (Maude) 2 ch clerk O H&L 109 E Plain St.
 Wilber, Chas. (Emma) O H&L 615 West St.
 Wilber, Edith tel operator T N Main St.
 Wileox, Anna O H&L 319 W Knight St.
 Wileox, Mrs. Mary A. (wid John D.) housekeeper O H&L 524 Canal St B tel.
 Williams, Jas. (Viola) farmer O H&L 1002 Water St.
 Wilson, Lewis (Lena) blacksmith O H&L 608 Spicerville Road B tel.
 Wilson, Phoebe 202 cor State & River Sts.
 Wilson, Sarah 2 ch O H&L 111 N River St.
 WILSON, Mrs. W. W. 202 State St.

EATON RAPIDS

Wilton, Barbara T 204 Dexter St.
Wilton, George (Oletah) 1 ch tailor T
503 Brook St.
Wilton, Ray wks woolen mills 204 Dex-
ter St.
Winn, Celia O H&L 329 W Knight St.
Winslow, Maud wks bath house 740
Michigan St.
Winters, Florence 210 Lansing St.
Wiseman, Wm. (Effie) 2 ch thresher O
H&L 447 Plain St.
Wisner, C. D. (Harriet) real estate O
H&L 304 cor Broad & Montgomery
Sts B tel.
Witheral, Nancy O H&L 816 S Main St.
Witheral, Wells laborer 816 S Main St.
Wood, Edward teacher 437 Canal St.
Wood, Jacob (Emma) 3 ch blacksmith T
West St.
Wood, Job (Amelia) section foreman O
H&L 437 Canal St B tel.
WOOD, JOHN (Cora) 3 ch O H&L 602
cor Jenne & Plain Sts.
Wood, Robt. teamster West St.
Wood, R. D. dentist T 128 S Main St.
Woodman, Hattie 2 ch O H&L 1010 cor
Water & Elizabeth Sts B tel.
Woodruff, Charles carpenter 517 Bent-
ley St.
Woodruff, E. F. (Phoebe) blacksmith O
H&L 445 Minerva St.
Woodruff, Ivan (Orpha) laborer T 445
Minerva St.
Woodruff, Lynn (Belle) O H&L 114 Di-
vision St.
Woodruff, Minnie O H&L 509 S Main
St.
Woodruff, Wm. (Gertrude) blacksmith
121 N River St.
Worden, Rev. Albert D. (Minnie) 1 ch
minister T 220 E Knight St.
Wyant, R. M. (Allie) farmer O H&L
216 Lansing St.
Wyman, Milton (Phoebe) 3 ch T West
St.
Young, Robertson ret 302 cor S East &
E Hamlin Sts.
Youngs, Mrs. Agnes 2 ch milliner T 112
N Main St.



A Filled Silo.



Have you ever researched and found relatives listed in various places in Eaton County but wondered where these places were or if they actually existed? Below are all the original Eaton County places with or without post offices that were once in being. These have been extracted from MICHIGAN PLACE NAMES, by **Walter Romig**.

AINGER -

Carl F. Meads became the first postmaster at this station on the Grand Trunk Railroad, in Walton Township, on March 16, 1882; the name was changed to **THURMAN** on February 13, 1889, then back to **AINGER** on May 9 of the same year, until it was closed on February 28, 1910; believed to have been named for state official **Daniel B. Ainger**.

BENTON -

Bennett I. Claflin, from New York State, became the first settler in 1837; the legislature created the town in 1843 and named it **TOM BENTON**, but the people in 1845 effected a legal change to **BENTON**; named for Thomas Hart Benton.

BISMARCK -

The brothers **Silas P.** and **J. Hatch Loomis** emigrated here in southwestern Sunfield Township in 1853 and the area was given a post office named Bismark on January 26, 1871, with **J. Hatch Loomis** as its first postmaster, the office operating until June 30, 1904.

BROOKFIELD -

Peter Moe, with his sons **Ezra** and **Henry**, became the first settlers here in 1837, and for

years this settlement was known as **MOETOWN**; later in the same year, **Jesse Hart** and his bride **Rachel** settled here. Brookfield Township was organized in 1841 and the village was named after it. **Thomas D. Bryan** became its first postmaster on July 13, 1858; the office was closed on December 13, 1865, but was restored from July 8, 1867 to July 30, 1904.

- BUTTERFIELD CORNERS -** Named for **Hiram Butterfield** who located his farm here in 1837, and lived to be 96.
- CAMP CREEK -** **Silas E. Millett** became the first postmaster of this rural post office on May 14, 1856, the office operating until February 21, 1862.
- CANADA SETTLEMENT -** In the southeast corner of Oneida Township in 1836 - 37, six young men (**Martin, Jason and J. H. Nichols**, and **James, Robert & Samuel Nixon**) and their families, from London, Ontario, Canada, settled; followed soon by others from the same area. The place came to be called Canada Settlement.
- CARLISLE -** **Charles T. Moffit** (or Moffat) settled here in 1836 and built a sawmill in 1837. When it passed into the hands of **Oliver A. Hyde**, the locality became known as Hyde's Mills; given a post office as Carlisle, with **Edward D. Lacy** as its first postmaster, on August 15, 1843; the office operating until May 30, 1903.
- CARMEL -** Sometimes **CHARLOTTE** was known as Carmel but never was it official.
- CENTER -** An unofficial name for **HOYTVILLE & HOYT'S CORNER**.
- CHARLESWORTH -** First settled in 1863, this village was given a railroad station and on February 16, 1874 a post office, with **John W. Loomis** as its first postmaster, the office operating until March 15, 1907.

CHESTER -

The first permanent settlers were **Harvey, Issac** and **Orton Williams**, in 1836; the first town meeting was held in the home of **Harvey Williams** in 1839; it was given a post office on January 29, 1842; the office was transferred to ALLEN'S on February 7, 1870, but the Chester post office was re-established the following day; a station on the Grand Rapids division of the Michigan Central Railroad; it was first platted as CHESTER STATION by **Jesse Betz** in 1870, with an addition by **George Brenner** the same year; its post office was closed on October 13, 1873, but was restored from May 7, 1874 to October 31, 1913.

CLINTON JUNCTION -

This sawmill settlement in Sunfield Township was given a post office on February 3, 1871, with **William Kilpatrick** as its first postmaster, the office operating until November 30, 1874.

COUNTY LINE -

Andrew Haupt became the first postmaster of this rural post office on March 19, 1869, the office operating until December 20, 1870.

DALTONVILLE -

A hamlet, 7 miles west of Charlotte, in 1878.

DELTA -

Also called DELTA MILLS, named after its township which had been named from the bend of the river here which resembled the fourth letter of the Greek alphabet, delta; when its village was first platted it was called GRAND RIVER CITY; given a post office DELTA, with **Whitney Jones** as its first postmaster, on September 6, 1842; the office was closed on September 15, 1910; a station on the Detroit, Grand Rapids and Western Railroad.

DELWOOD -

The village in Sunfield Township was given a post office on April 17, 1882, with **DeWitt I. Loomis** as its first postmaster, the office operating until March 14, 1903; in some records spelled DELLWOOD.

EAST BELLEVUE -

Walton had a post office once named East Bellevue.

EAST WINDSOR -	George Cheney and Rev. McCarty , a Baptist minister were among the first postmasters of this rural post office opened about 1860 in eastern Windsor Township; the office was transferred to DIMONDALE on July 3, 1872.
EATON -	William Southworth became the first postmaster of this rural post office on February 27, 1839, the office operating until November 12, 1856.
EATON CENTRE -	An unofficial name for CHARLOTTE .
ELMIRA -	Joseph Norstraut became the first postmaster of this rural post office on February 14, 1855, the office operating until May 1, 1871.
GRAND RIVER -	Erastus S. Ingersoll became the first postmaster of this rural post office on September 13, 1837, the office operating until July 25, 1839.
GRESHAM -	This village in Chester Township was settled in 1883 and given a post office on October 30, 1837, the office operating until July 25, 1839.
GRINDSTONE CREEK -	A mill settlement in 1837, on a stream which took its name from a sand-stone ledge, through which it ran.
HAMLIN -	Colonel John Montgomery first settled here in 1836; originally a part of Bellevue Township, later of Eaton, still later of Tyler in 1841; the townships of Tyler and Eaton Rapids were united in 1850 and in 1869, Hamlin was set off from Eaton Rapids by the legislature; named for Samuel Hamlin who for the government had cut a road through from Clinton to the Thornapple River in the Northwestern part of the county.
HOYTVILLE -	Named fro Dr. Henry A. Hoyt , of New Haven, Conn., who opened a store here in 1869; M. D. Halladay moved his sawmill here in 1872, given a post office as CENTRE on June 10, 1856, with Gardner S. Allen as its first postmaster; the office was later moved a mile south to the Centre

	(named from its location in Roxand Township), but in 1876, it was returned to HOYTVILLE and renamed HOYTVILLE on March 3, 1880, with Dr. Hoyt as postmaster; the office was closed on June 15, 1905; it was also known as HOYT'S CORNERS.
HYDE'S MILLS -	The locality named CARLISLE was known as Hyde's Mills.
JEFFERSON -	Peter DeRiemer became the first postmaster of this rural post office on October 5, 1837, but on January 29, 1842, the office was transferred to and renamed CHESTER.
KALAMO -	The first land was located here by N. and H. Weed and Martin Leach about the same time in 1835; the township was organized in 1838 and the village named after it; Alexander Merritt became its first postmaster on March 5, 1842, the office operating until August 31, 1903.
KELLY -	A post office in the (M.K.) Bosworth, Kelly & Son general store, with Cornelius S. Jackson becoming its first postmaster on October 4, 1895, the office operating until March 31, 1903.
KINGSLAND -	A station on the Muskegon Central Railroad, in Eaton Rapids Township; William Drake became its first postmaster on May 31, 1882; the office was closed on April 24, 1896, but was restored, with Sarah Drake as postmaster, on January 19, 1898, the office operating until August 31, 1903.
MILLETT -	This village in Delta Township formed around the coal and clay beds of S. E. Millett , for whom it was named; it was given a station named MILLETT'S on the C. & L. H. (now Grand Trunk) Railroad in 1877, and on May 14, 1877, a post office named Millett, with Franklin P. Wells as its first postmaster, the office operating until July 30, 1910.
MONTGOMERY PLAINS -	It was named for John Montgomery who first settled here in Hamlin Township in 1836; he was

	a brigadier-general and in 1849 was elected to the state legislature.
MOORE'S -	A station on the C. & L. H. Railroad, just north of Olivet, in 1876.
MORRELL -	A Hamlet in 1912.
MUD CREEK -	Joel Bailey became the first postmaster of this rural post office on Mud Creek, in Oneida Township, on September 5, 1851, the office operating until November 9, 1870.
NEEDMORE -	The Village of ROXAND was called Needmore on some maps.
ONEIDA -	Solomon Russell , from Orleans Co., N.Y., became the first settler in 1836, followed by Samuel Preston , from Cayuga County, N.Y., in 1837; the legislature created and named the town in 1838; Mr. Preston became its first postmaster on January 19, 1839; the office was closed on August 6, 1852, but was restored from June 3, 1854 to August 3, 1866.
PETREVILLE -	This village in Eaton Rapids Township was first settled in 1880; Alice E. Jenks became its first postmaster on April 8, 1898, the office operating until January 31, 1901; the townspeople voted on consolidation with Eaton Rapids in 1956.
ROXAND -	Andres Nickle , a native of Ireland, made the first government land purchase here in 1837, but while he went to get his family, Orrin Rowland and Henry Clark became the first actual settlers; William Crother lived here with Roxana , believed to be his wife; her son-in-law had Crother sued for bigamy and won; while her lawyer, Edward Bradley , was a state senator, the townspeople had him petition that the town be named Roxana; the enrolling clerk made the final "a" look more like a "d" and the name became ROXAND; but its post office, opened on December 31, 1849, with John Ewing as its first postmaster, was spelled ROXANA; the office

operated until March 31, 1903; the village was also called NEEDMORE and is on some maps as such.

SHAYTOWN -

A station on the Grand Rapids division of the Michigan Central Railroad, in Sunfield Township; storekeeper **Albert C. Jarvis** became the first postmaster of the settlement on February 11, 1880; the office was closed on January 20, 1894, but was restored from January 25, 1898, to February 14, 1901.

SHEPHERD'S CORNERS -

Hiram Shepherd brought a tract of land about two miles east of Charlotte in 1837, then went east for his family, returning with them in 1840; after moving two or three times, he settled for the rest of his life at what became known as Shepherd's Corners.

TYLER -

With the office named SOUTH EATON, **David B. Bradford** became the first postmaster of this rural post office on March 25, 1839; **John Tyler** became the tenth president of the U.S. on April 4, 1841, and this post office was renamed for him on December 10, 1841, the office operating until December 3, 1845.

WALTON -

Land entries by speculators were made here in present Walton Township as early as 1832; but **Captain James W. Hickok** became the first actual settler in 1836, and the first postmaster of its post office, named EAST BELLEVUE, on August 24, 1838; the township was organized in 1839 and the second settler, **Parley P. Shumway** was elected its first supervisor; the post office was renamed WALTON on December 31, 1840 and operated until August 17, 1849.

WEST BENTON -

David Verplank became the first postmaster of this rural post office on January 12, 1855, the office operating until October 19, 1860; see BENTON for the name.

WEST WINDSOR -

Thomas J. Sloan, from Oneida County, N.Y. became one of the first settlers in 1844; **George**

P. Carman became its first postmaster on October 1, 1849; **E. D. Davison** built a steam sawmill here in 1856 and his brother-in-law, **A. R. Williams**, opened the first store; its post office operated until June 15, 1905; the village was nicknamed Sevastopol at the time of the Crimean War; see WINDSOR for the name.

TOWNS IN EATON COUNTY THAT ARE STILL IN EXISTENCE

BELLEVUE -

In 1832, **Luther Lincoln** made the first government land purchase here; he sold to **Isaac E. Crary**, of Marshall, who platted the village in 1835; **Reuben Fitzgerald** became the first actual settler in 1835; with **John T. Hoyt** as its first postmaster; it was in Calhoun County until Eaton was organized in 1837; the county seat from 1838 to 1840; with **J. P. Woodbury** as postmaster, it was renamed BELLEVUE on January 8, 1841; incorporated as a village in 1867; named from its pleasant location.

CHARLOTTE -

The site was government land bought by **George Barnes** in 1832; he sold it to **Edmond Bostwick**, of New York City, in 1835; he in turn sold part of it to **H. I. Lawrence**, **Townsend Harris**, and **Francis Cochran**, and the four developed the village which they named after Mr. Bostwick's wife; **Jonathan Searles** became its first postmaster on March 17, 1838; incorporated as a village in 1863 and as a city in 1871; at various times it was also known as EATON CENTRE and as CARMEL, but never officially.

DIMONDALE -

In 1840 **Isaac M. Dimond** began to build a dam and a sawmill on the Grand River here and in 1856 he built a grist mill; he had the village platted by **Hosey Harvey** in 1856 and named it for himself; **Bradley Sloan** became its first postmaster on July 3, 1872; when the Lake Shore & Michigan Southern Railroad came through in 1878 it was given a station as DIAMONDALE; incorporated as a village in 1906.

EATON RAPIDS -

Platted in 1838 by **Amos** and **Pierpont E. Spicer**, **Benjamin Knight**, **Samuel Hamlin** and **C. C. Darling**, all from Ohio; Mr. Knight became the first postmaster on September 27, 1838; incorporated as a village by the supervisors in 1859 and by the legislature in 1871; incorporated as a city in 1881; named from the rapids of the nearby Grand River and from the county, which had been named for **John H. Eaton**, secretary of war in Andrew Jackson's cabinet.

GRAND LEDGE -

H. Mason, a speculator, made the first land entry here in 1831, but it was sold for taxes four years later; **Edmund L. Lamson** made the first permanent settlement in 1848, for **Henry A. Trench**, whom he found living here, later moved away; in 1850, **Mrs. Lamson** suggested the name after the Grand River running past the great ledge of rocks nearby; Mr. Trench became the first postmaster on July 20, 1850; incorporated as a village in 1871 and as a city in 1893.

MULLIKEN -

The village was founded in 1888 by **Theodore E. Potter**; **Albert Lawrence** became its first postmaster on September 20, 1888; incorporated as a village in 1903; named for **Mr. Mulliken**, the contractor who built what is now the Chesapeake & Ohio Railroad that runs through the village.

OLIVET -

Rev. John Shipherd, founder of Oberlin College in Ohio, led a colony of 39 here in 1844, to found a Congregational College and community; he had planned to go to the Delta valley, but lost his way in the wilderness and landed here; believing it was providential, he remained and named it after Mount Olivet of the Bible; **Albertus L. Green**, as a college student, conducted the first post office; **Prof. O. Hosford** became the first government appointed postmaster on August 17, 1849; the village was first platted by **Carlo Reed** and **William Hosford** in 1848; incorporated as a village by the supervisors in 1865 and by the legislature in 1867; incorporated as a city in 1958.

POTTERVILLE -

It was first settled by **Linus Potter** with his wife and seven children in 1844; within two years he died, but his family cleared the land and carried on; in 1868, his eldest son, **George N. Potter**, built a sawmill and a boarding house for the hands, the latter becoming a hotel; **James W. Potter** became the first postmaster (at \$12 a year) on March 15, 1870; it was platted and recorded in 1868 by **R. D. Phelps** and **Charles H. Brown**; incorporated as a village in 1881 and as a city in 1962.

SUNFIELD -

Samuel S. Hoyt became the first settler in the area in 1836, but the land on which the present village stands was first bought by speculators; it was given a post office as **SUNFIELD**, named after its township, on February 28, 1855, with **Samuel W. Grinnell** as its first postmaster; the office was closed on July 30, 1872, but has been restored since September 1872; a station on the Detroit, Grand Rapids & Western Railroad; incorporated as a village in 1899.

GENEAL-ANON

Submitted by Mary Jean Baker

The following was written by Walton Collins, the spouse of Carol Collins, a genealogy columnist in the South Bend, Indiana Tribune. Mr. Collins provides a checklist of proposed requirements for membership in a Geneal-Anon groups for all spouses of genealogists. You need only meet five requirements in order to be eligible for membership.



- ☉ Ranks family vacation sites by the quality of the cemeteries in the vicinity.

- ☺ Is often indifferent to lunch or dinner if he/she happens to be glued to a computer screen (if indifference extends to breakfast, it may be too late even for Geneal-Anon to help you).
- ☺ Spends hours putting genealogical charts in order while surrounded by disarray of his/her last six trips to the research library.
- ☺ Is occasionally found at 3:00 a.m. on a wakeful night, entering genealogical data into a computer or a family sheet.
- ☺ Spends a day in Chicago in mid-December and never leaves Newberry Library for the glitter of Water Tower Place.
- ☺ Has the wall of his/her workroom plastered with family charts.
- ☺ Sets out for the Ft. Wayne Library at 6:00 a.m. on snowy winter mornings despite forecasts that the blizzard of the decade will arrive by noon (it is, I believe, every genealogist's dream to be snowed in for a week at someplace like the Ft. Wayne Library.)
- ☺ Never fails to volunteer to run the family reunion, which is to be held next summer in a place hundreds of miles away where no tourist has ever before turned up.
- ☺ Comes home from conferences loaded down with audio tapes of every conference session including the happy hours.
- ☺ Hangs around telephone booths in unfamiliar cities and airports, paging through the telephone book in search of names in the family line...and sometimes dialing strangers "on a hunch."

Side-Talks With Girls

Taken from "The Ladies' Home Journal" December 1893

Bessie D. - For riding, a very short corset is usually recommended.

LADIES' COURSE.

STUDENTS.

Graduates of 1876.

Names,	Residences.
Green, Fredrika Maria.	Olivet.
Owen, Dolly Sabina,	East Saginaw.
Parsons, Nancy Etta,	Olivet.
Stone, Rosamond Hotchkiss,	Olivet.

Fourth Year.

Lewis, Emma Cornelia,	New Milford, Conn.
McCotter, Eliza,	Vermontville,
Newland, Martha Helen,	Olivet.
Reed, Mary Amelia,	Olivet.
Sessions, May,	Matherton.
Tabor, Abby Cornelia,	Olivet.
Topping, Alice Fidelia,	Olivet.

Third Year.

Benedict, Mary Elizabeth,	Vermontville.
Buck, Jennie Elmira,	Charlotte.
Hunt, Rosamond Isabella,	Richmond.
Newland, Ida Huldah,	Olivet.
Pearl, Ella,	Battle Creek.
Pearl, Emma,	Battle Creek.
*Williams, Edith Burr,	Charlotte.
Williams, Sarah Nelson,	Charlotte.

*Deceased.

Second Year.

Names.	Residence.
Clark, Mary Ida,	Columbus.
Cole, Caroline Eliza,	Ceresco.
Cole, Cecilia Ellen,	Ceresco.
Dickinson, Ella Sophia,	Vermontville.
Hazelton, Mary Ella,	Hartford.
Herrick, Nellie Isadore,	Olivet.
Jandell, Josephine Maria,	Marshall.
Lewis, Flora Ruth,	Ceresco.
Prentice, Caroline Mason,	Olivet.
Thompson, Ada Semira,	Lansing.
Topping, Ellen Effie,	Olivet.

First Year.

Atkinson, Clara Orelana,	Monroe.
Goodwin, Martha Chapin,	Olivet.
Preston, Sarah Rebekah,	Manistee.
Upton, Addie R.,	Big Rapids.

Elective.

Axford, Ella Vogan,	Holly.
Boies, Clara Experience,	Hudson.
Dean, Eliza Ella,	Olivet.
Fitzgerald, Nora Caroline,	Bellevue.
Goodrich, May,	Portland.
Leiter, Clara Elizabeth,	Charlotte.
Moseley, Clara Lydia,	Union City.
Palmer, Belle Love,	Marshall.
Wellbrook, Anna Catherine,	Marietta, O.

LADIES' PREPARATORY DEPARTMENT.

STUDENTS.

Names.	Residences.
Barber, Ella Susan,	Olivet.
Barnes, Susan Adella,	Charlotte.
Blanchard, Florence Susanna,	Battle Creek.
Buck, Isa Annetta,	Lyons.
Bull, Florence Nightingale,	Montclair, N. J.
Butler, Katy Estella,	Olivet.
Butler, Lucy Jane,	Olivet.
Campbell, Anna,	Westwood.
Chapel, Carrie Carista,	Grand Rapids.
Childs, Mary Amarilla,	Ypsilanti.
Clark, Emma Leona,	Olivet.
Clark, Estella,	Bedford.
Cole, Emma Jane,	Ceresco.
Comstock, Eugenia Luella,	Ithaca.
Comstock, Helen Antoinette,	Ithaca.
Curtis, Cornelia Melissa,	Olivet.
Denison, Della Mary,	Olivet.
Dubois, Laura Lonetta,	Battle Creek.
Ely, Emily May,	Olivet.
Faxon, Mary Vestaline,	Lyons.
Fleming, Margaret,	Vermontville.
Gill, Mary Jane,	Northport.
Graves, Kate Edna,	Battle Creek.
Grover, Caroline M.,	South Haven.
Hall, Minnie Loraine,	Bellevue.
Hazelton, Frances Antoinette,	Hartford.
Heydenburk, Isadore Adell,	Olivet.
Hobart, Ruth Imogen,	Olivet.

Names.	Residence.
Horn, Barbara Alice,	Charlotte.
Howe, Angia Lynde,	Lansing.
Hubbard, Helen Caroline,	Marshall.
Hubbard, Susan Elizabeth,	Marshall.
Hudson, Jennie Elmira,	Pottersville.
Hunsiker, Minnie Cook,	Bellevue.
Ives, Laura Edwina,	Olivet.
Kester, Mary Louisa,	Olivet.
Landers, Leila Dell,	Greenville.
Lathrop, Alice Evelyn,	Richmond.
Lee, Hattie Sophia,	Union City.
Lyon, Anna Eliza,	Olivet.
Manly, Lily May,	Hickory Corners.
Mather, Helen Belle,	Detroit.
McNeil, Belle,	Alpena.
Millard, Fanny Lucinda,	Dubuque, Ia.
Mitchell, Addie,	Croton.
Mitchell, Mary,	Croton.
Morrice, Emma Viola,	Perry Centre.
Morrice, Lily Frances,	Pewamo.
Morrill, Jennie C.,	Lawton.
Nelson, Minnie Eliza,	Olivet.
Oakes, Jessie Fremont,	Sturgis.
Passage, Alice Jane,	Mancelona.
Phelps, Alice May,	Battle Creek.
Pinch, Jane Estella,	Olivet.
Pinch, May Angia,	Olivet.
Randolph, Ella Fitz,	Ceresco.
Raynor, Annette Elizabeth,	Olivet.
Reasoner, Cora Anna,	Olivet.
Reed, Belle Vesta,	Olivet.
Reid, Mary,	Convis Centre.
Rogers, Cynthia,	Bellevue.
Savage, Emma Louisa,	Olivet.
Savage, Leila May,	Olivet.
Sessions, Martha Grace,	Olivet.
Shalliar, Minnie Adelia,	Olivet.
Smith, Mary Antoinette,	Somerset.
Spier, Emma Jane,	Mount Clemens.
Spooner, Alice Maria,	Olivet.
Spooner, Elizabeth Antoinette,	Olivet.
Stevens, Eva Dell,	Three Rivers.

Names.	Residences.
Stone, Josephine Adella,	Olivet.
Stone, Mary Cynthia,	Olivet.
Sweet, Harriet Elizabeth,	Olivet.
Tabor, Ida Belle,	Olivet.
Taggart, Mary Ida,	West Leroy.
Towne, Mary, .	Milo.
Vangeison, Alice,	Olivet.
Van Nostrand, Anna Grace,	Elgin, Ill.
Verney, Mary Ella,	West Leroy.
Watson, Ada May, .	Ithaca.
Watson, Belle Amanda,	Ithaca.
Weller, Maria,	Rockford.
Willis, Julia Anna,	Olivet.
Wood, Addie Iora, .	Olivet.
Wood, Effie Rosella,	Olivet.

SUMMARY OF STUDENTS.

COLLEGE—

Graduate Students.....	5
Classical Course.....	33
Scientific Course.....	23
Ladies' Course.....	34
Ladies' Elective Studies.....	9

PREPARATORY—

Classical Course.....	26
English Course.....	43
Ladies' Preparatory Course.....	85

Whole Number of Gentlemen..... 131

Whole Number of Ladies..... 140

Total..... 271

Art Department..... 30

Conservatory of Music..... 157

ABBREVIATIONS:

C. H.....	Colonial Hall.
P. H.....	Parsons Hall.
L. H.....	Ladies Hall.
Cl.....	Classical Course.
Sc.....	Scientific Course.

SCHOOL DAY REMEMBRANCE

Compliments of

✱ LETITIA SMITH. ✱

YOUNG'S DISTRICT, BELLEVUE.

Nov. 17, 1890.

Feb. 6, 1891.

Howard Bailey,
Daniel Young,
Jennie Johnson,
Selena Hamilton,
Lerena Hamilton,
Alvin Hamilton,
Julia Hamilton,
Jason Flower,
Verna Flower,
Stanley Stevens,
Ethel Stevens,
Eliza Gamble,
Myrde Lane,
Maurice Crawford,

Ova Millard,
Graham Millard,
Cyrus Millard,
Floyd Ripley,
Merton Scott,
Bertha Scott,
Alma Potter,
Ethel Loomis,
George Secore,
Mary Secore,
Ashley Dow,
Lewis Millard,
Ollie Millard.

From September 4, 1893, to January 20, 1894.

School District No. 7

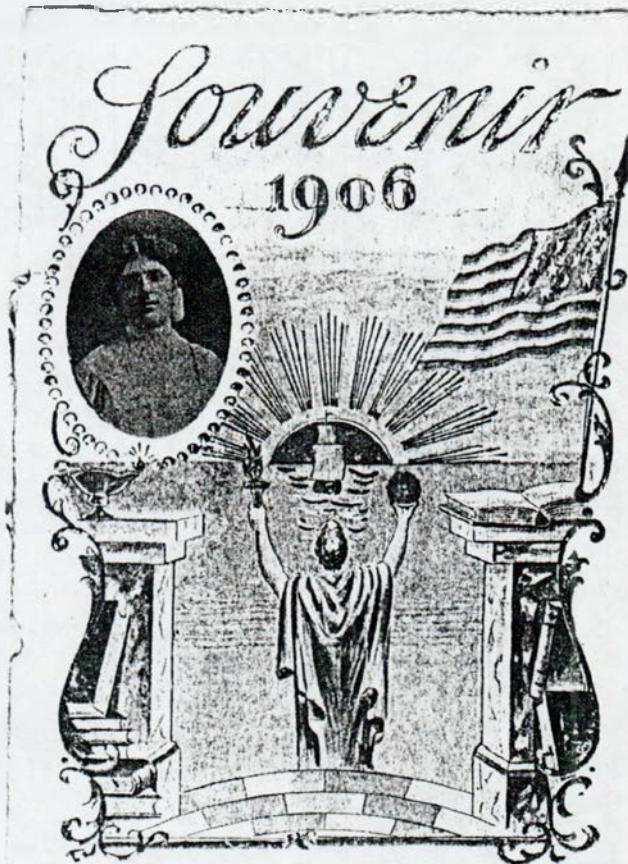
BELLEVUE, MICH.

Lerena Hamilton,
Alvin Hamilton,
Julia Hamilton,
Floyd Hamilton,
Bertha Scott,
Merton Scott,
Edna Scott,
Ashley Dow,
Roy Van Sickle,
Harley Flower,
Lewie Millard,

Oma Cornell,
Ethel Loomis,
Ethel Stevens,
Floyd Ripley,
Vernie Ripley,
Stella Bonney,
Lottie Bonney,
Mary Secore,
Herna Secore,
Harry Secore,
Ollie Millard.

AMY S. BENTLEY, Teacher.

Compliments of
Amy S. Bentley



SMITH
PUBLIC SCHOOL
District No. 14
Chester Twp., Eaton Co., Mich.
EVA DAVIS, Teacher
J. L. Wagner, Co. Comm.

Pupils

Grade 1
Bethel Rogers Hentrice Rogers
Florence Haun
Grade 2
Ruby Barhyle
Grade 3
Maud Satterley Marian Haun
Freddie Bishop
Grade 4
Elsie Love Oren Satterley
Grade 5
Roy Satterley S. D. Rogers
Floyd Rogers Marshall Field
Grade 6
Lulu Waite Ora Satterley
Myron Rogers Milo Young
Bert Bursley
Grade 7
Bessie Jacobs Mable Waite
Grade 8
Nora West Pearl Fletcher
Edna Towe
School Board
G. E. Field, Director
Fred Loomis, Moderator
Clark Rogers, Treas.

Wheaton School
DISTRICT NO. 1
Chester Twp., Eaton Co., Michigan
May 19, 1916



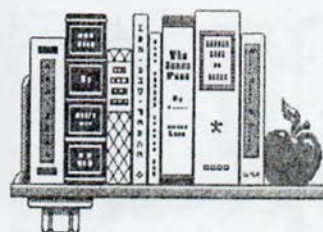
Pearle Fletcher,
Teacher

OFFICERS

Cynthia A. Green Com.
Wilbur Hice Director
G. W. Carter Clarence Harrington

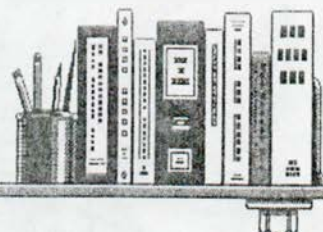
Pupils

Russel Harrington
Harry Bottomley
Myrie Wheaton
Arthur Drake
Clair Griffin
Lloyd Kisor
Maxine Shrader
Keith Turner
Beatrice Thompson 9
Dorothy Drake
Bernard Shrader
Rues Thompson 11
Merlin Drake
G. Ion Harrington
Bernice Thompson 13
Bernard Hice
John Lawrance Near
Reva Kisor
Walter Drake
Lida Kimmer
Howard Hice



New On The Shelves

of the
Eaton County Genealogical Society Library



CEMETERIES:

- Lawrence Co., Missouri Tombstone
Inscriptions 226.2 v.II
Bellevue Riverside (MI.) 700.11 ref

COUNTRIES:

- Contemporary Arts of 79 Countries 200.1
BELGIUM
The Story of the Walloons 200.B.1
CANADA
Ontario Hertiage,
A Guide to Archival Resources 200.C.5
Index to the 1871 Census of Ontario 200.C.6
County Marriage Registers of Ontario,
Canada 1858 - 1869, vol. 25
Victoria Co. 200.C.7
CHINA
A Photographer In Old Peking 200.C.8
ENGLAND
Litterary England 200.E.2
POLAND
The Poles in America 200.P.1
SCOTLAND
The Hill, Its people People & Its Pits, A
History of the Village Lethanhill/Burnfoothill 200.S.2

DIARIES:

- Diary of Ellen L. Glading Southworth
Journal.21

GENEALOGIES:

- The Cathcart Family 900.CA.01
Gourley Generations 900.GO.02
Jones Family 900.JO.02
The Martens Family 900.MA.01
The Moffats 900.MO.01
The History of the Clan Neish or MacNish 900.NE.01

- The Otis Family 900.OT.01
Warren & Elizabeth (Oakley) Sirrine
Descendants' Register Report 900.SI.01

- Descendants of Georg Goutlier Stadel
1792 -1859 900.ST.01

GENERAL REFERENCE:

- Lifeline- The Action Guide To Adoption
Research 100.111
The New England Puritans 100.112
Ancestors & Immigrants 100.115
The Handy Book For Genealogists,
8th Edition 100.116
How To For Genealogists 100.117
Address List of Church Archives and
Libraries 100.118
Federation of Genealogical Societies
1995 Membership 100.122
The Source Catalog #7 and Family History
Catalog #12 100.123
Guide to Genealogical Records in the
National Archives 100.124
The Guardian of the New World, Pioneering
in the Connecticut Valley 100.126
The Puritan Dilemma, The Story of John
Winthrop 100.127
State Archives of Michigan Genealogical
Information 300.54

MILITARY:

- Confederate Research Sources,
A Guide to Archive Collections 100.110
The Colonial Wars 400.45
Daughters of Union Veterans of Civil War
Membership Form VF507
National Park Service Civil War Soldiers
System VF508

NATIVE AMERICANS:
Ocmulgie, History of Native Americans &
the National Park in Georgia **211.1**

OBITUARIES:
Reflecting birth dates of the Late 1800 -
Early 1900, Taken from Battle Creek
Enquirer News **313.6 ref**

SCHOOLS:
DIRECTORIES
Lansing Community College Alumni
Directory 1995 **SC.81**
Michigan State University Directories
1991 - 94 **SC.82**

SCRAPBOOKS
Charlotte High School Class Reunion
(classes 1956, 57, 58, 59 & 60) **SC.84**

TREASURER BOOKS
McConnell School, Benton Twp. **SC.83**
YEARBOOKS

Charhian (Charlotte, MI.) 1959 **SC.12**

SCRAPBOOKS:
Scrapbook of News Clippings,
from Hastings Reminder & Lakewood News
(Dec. 1992 - Nov. 1994) **SB.44**
3 Scrapbooks, Birth, Marriage & Divorce
Announcements with Photos of Weddings
1989 **SB.45 - 47**

STATES:
CONNECTICUT
From Puritan to Yankee Character & the
Social Order in Connecticut 1690 - 1765
207.2

COLORADO
Sedgwick County History **206.1 v.1**

INDIANA
Researching Hoosier Ancestors from Your
Home Base **215.3**

KANSAS
Kansas Research from Your Home Base
217.1

MASSACHSETTS
The Plain People of Boston **100.113**

Puritanism in Old & New England
100.114

Chronicles of Old Salem **222.2**
The Boston Tea Party **222.3**
History of Westford, Mass. **222.5**
Invitation To Boston, A Merry Guide to Her
Past, Present and Future **222.6**

MICHIGAN
Society of Mayflower Descendants in
Michigan 1978 **300.55**

MISSISSIPPI
The Natchez Court Records, Abstracts of
Early Rec. 1767-1805 **225.1**

MISSOURI
Lawrence Co., Missouri History **226.1**
Kentuckians in Missouri **226.3**

NEW YORK
The Old Post Road **200.57**

OHIO
Idle Weeds, The Life of an Ohio Sandstone
Ridge **236.9**
Ohio, A Bicentennial History **236.10**
History of Franklin & Pickaway Counties,
Ohio Index **236.3**

WEST VIRGINIA
Sources for Family Research in West
Virginia **VF509**

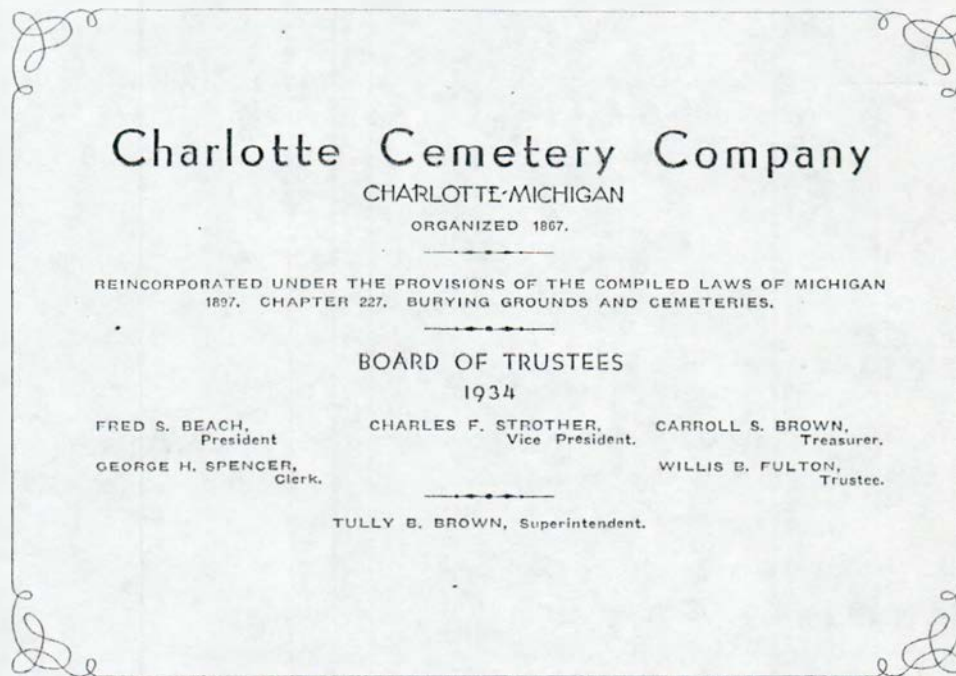
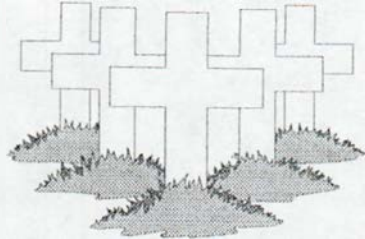
WISCONSIN
Wisconsin Sampler **250.2**
Old Peninsula Days, Green Bay, Door Co.
250.3

MISC.
John Anton Weber & His Family, from The
Mennonite Research Journal
(2 pp.) **VF506**
Abstract of Title,
622 Merritt, Charlotte, MI. **VF511**
Historical Map of Scotland **OS.66**
Historical Map of England & Wales
OS.67

~ Submitted by Sharlene Thuma ~

The Charlotte Cemetery Company

By Mary Jean Baker



The above is the cover to a booklet telling about the Charlotte Cemetery Company.

Oak Park in Charlotte was the first "burying ground," the tract serving both Carmel and Eaton Townships, even before this community was known as "Eaton Center."

A "History of Eaton County," prepared by **Samuel W. Durant** and issued by a Philadelphia Publishing Company in 1880, gives the following account of the first step towards the purchase of land "as a public burial ground by the two townships":

*At a meeting of the township board of Eaton township, held in Charlotte, April 4th, 1845, it was ordered that **William Southworth** be a committee to purchase the south half of Block 28 in the village, jointly with the township of Carmel, to be used as a public burial ground by the two townships, provided Carmel would pay half and the expense to Eaton township should not be more than thirty dollars. Carmel township about the same time appropriated funds towards purchasing, laying out. The Eaton Township share was not entirely paid for until two years later, the cost to that township being \$33.15. The ground was fenced in 1851. This is what is now known as the "old cemetery" at Charlotte, all rights to it having been relinquished to the village, or city, by the respective townships.*

A stock company was organized in 1863 with the following stockholders: **E. Hayden, E. Shepherd, Jas. Shepherd, E.S. Lacey, J. Musgrave, S.C. Sherwood, Henry Robinson, E.A. Foote, J. Saunders, B.W. Warren, E.T. Church, A.K. Bretz, T. Pixley, A.H. Munson, L.B. Brockett, P.M. Higby, F.W. Higby, Leroy Shepherd, John D. Parkhurst, W.C. Foster, C.A. Merritt, J.M. Haslett, G.T. Rand, C.H. Colgrove, Jesse Hart, A.J. Ives, H.H. Gale, Sylvester Collins, A.T. Loring, N.A. Johnson, S.P. Webber, Wolcott B. Williams, G.V. Collins, A.H. Kesler, W. Adamas.**

Mr. Shaw presided at a meeting held September 3, 1867 and **J. Saunders,**

an early editor of the "Charlotte Republican," served as Secretary. Elected as officers were, President, **D. Shaw;** Clerk, **E.A. Foote;** Treasurer, **E.S. Lacey;** Sexton, **James O'Neil,** and on motion **H. Robinson, E. Hayden** and **Jesse Hart** were appointed as a committee to ascertain and report upon the procuring of grounds suitable for the purposes of the Company.

On September 18th, 1867, the Site Committee reported: For the purpose of taking the sense of the meeting it was moved and seconded that what is known as the Reilly Farm in Eaton be selected as the site for the cemetery. Whereupon forty-one votes were cast in favor of selecting the Reilly farm and non opposed. The committee were, on motion, instructed to purchase immediately at a price not exceeding \$1,600.

In the meantime action was taken but no attempt was made to fit up the Reilly property for cemetery purposes. Two years later, or on September 18th, 1869, it was *Resolved, That a Committee of Five be appointed by the meeting for the purpose of examining the Starkweather hill as to its suitability for a cemetery ground, to ascertain the terms upon which it can be purchased--In favor of exchanging the Reilly property for what is known as the Starkweather hill, which composes about 66 1/2 acres of land and could be purchased for \$45 per acre.*

There was evidently quite a strong support for the change of properties and the present Maple Hill Cemetery

came into official being through the following action taken at a special meeting held September 28th, 1869.

Resolved, That the President and Clerk be and they are hereby authorized and instructed to take the necessary steps for vacating and selling the present site and to purchase the Starkweather hill.

We are of the generation who now enjoy the benefits of loving service of the beautiful spot of present Maple Hill Cemetery in Charlotte. Today, as it was when purchased, Maple Hill is the most commanding of any of our surrounding hillsides and every year emphasized the wisdom of the men who made the selection.

No profit can ever accrue to any of the corporation or officers as the enterprise is one of unselfish benevolence, and time and thought given with compensation.

1995:

Five members are elected as Trustees of the Company. These trustees are asking the city of Charlotte to take over the 166 acre burial ground. Administration of the cemetery is too much for the unpaid trustees. As of this date, July 1995, the Charlotte City Council has decided that they do not want to be financially supportive of the cemetery. A "Friends of the Cemetery" organization will soon be incorporated to decide the financial future of this lovely old cemetery.

The above information was extracted from the 1934 Cemetery Company booklet by Mary Jean Baker, a member of the Eaton County Genealogical Society.

Maple Hill Cemetery Rules Charlotte, MI 1934

1) All work upon lots shall be done under the direction of the Superintendent and (except the setting of monumental work) by workmen in the employ of the Cemetery Company.

2) When instructions for opening a grave are indefinite or, for any reason the grave cannot be opened in the location specified, the Superintendent will order it opened at such location on the lot as may seem best under the circumstances. Such action if necessary in order to avoid delaying funerals.

3) It is important that some friend or member of the family shall call and locate the grave desired opened, to avoid misunderstanding, and the Company cannot be held responsible for mistakes made when orders are given by telephone.

4) The Superintendent cannot be held responsible for not having a grave prepared in time for funerals, unless he has had at least twenty-four hours previous notice thereof, especially so in winter. All graves shall be opened and closed by employees of the Cemetery Company under the direction of the Superintendent.

5) The settling of the soil and the caving in of graves result from natural cause. It can largely be prevented by using metal or concrete burial vaults which can be secured of any reliable undertaker.

6) Owners of Single Burial Lots purchasing a Family Lot may have the bodies removed to same by providing new boxes when necessary, without extra charge, the original space being surrendered in payment thereof.

7) Whenever an assessment shall be made against any lot owner for care or other work done the same shall be and remain a lien upon said lot or right of burial and the Cemetery Board shall prevent burial on said lot until such assessment shall have been fully paid.

8) As soon as flowers, wreaths, emblems, etc., used at funerals, or placed upon graves at other times, become unsightly and faded, they will be removed and no responsibility will be assumed.

9) No one except an employee of the Company will be allowed to disturb the sod on any lot or grave; violation of this rule will be followed by the removal of plants and sodding of the grave level. The superintendent will co-operate with you and advise as to setting of plants to the best advantage.

10) Urns filled with plants will be permitted on lots and cared for at a reasonable charge, but after July 1st each year if said urns are not filled they may be removed.

11) The grade of all lots shall conform to the contour of the section on which they are situated.

12) At the annual meeting of the Charlotte Cemetery Company held February 10th, 1934, a resolution was passed strictly prohibiting the planting or setting of all large growing shrubs such as Althea, Golden Alder, Flowering Almond, Forsythia, Honeysuckle, Dogwood, High Bush Cranberry, Hydrangea, A.G. & P.G., Lilac, Snowberry, Japan Quince, Philadelphus or Mock Orange, Spirea, Weigella, Syringa, all large roses including ramblers or climbing, or any low-spreading ornamental trees of any kind, or any hardy plant without the consent and supervision of the Superintendent.

13) If any tree, vine, shrub or plant, situated within a lot becomes unsightly, dangerous or detrimental, they shall have the right to remove the same, or such portions thereof as may be deemed necessary.

14) No lot shall hereafter be set out or enclosed by any so-called fence, coping, hedge, or flower border, wood or metal trellises. Wire and screens, and designs of any description, rusty unpainted or broken benches, seats and vases, iron hooks from which baskets, bowls or flowerpot are suspended, and deemed unsightly, will be removed.

15) Thinking it to the best advantage of everyone concerned, the Charlotte Cemetery Company have passed a resolution forbidding burials on Sundays or legal holidays, except by

order of Board of Health.

16) As a guarantee of good work, and as a protection to all lot owners, and for the general welfare of the Cemetery, the management reserves the right to excavate for and build all foundations, also to determine the grade and location of monument; foundations for monuments shall be laid to the depth of five feet and the full size of the base of the monument, and be constructed of stone and Portland cement; for markers or head stones, to the depth of three feet; all stone work shall be on cement foundation. All markers or head stones on block J are restricted to not over eight inches above the ground.

17) The copying of a monument should be avoided. It can be considered but little less dishonest to appropriate another person's design than to take the stone itself. No matter how pleasing the design may be, to duplicate it destroys the effect and injures the appearance of the cemetery.

18) The Company wishes, as far as possible, to discourage the building of Vaults and Mausoleums, believing, with the best landscape artists of today, that they are generally injurious to the appearance of the grounds, and unless constructed with great care, are apt to leak and are liable to rapid decay, and in course of time become unsightly ruins. Therefore no Vaults will be permitted unless the designs are exceptionally good and the construction solid and thorough, and must be submitted for their approval.

19) The Public Vault has been erected to supply the necessities of those who may not be prepared to make immediate interment. No flowers will be allowed to remain on caskets while in the vault.

20) Granite is the only kind of stone recommended for monuments and markers; marble, limestone, sandstone, artificial stone, terra cotta, slate, and others composed of soft material are not durable in this rigorous climate; therefore, its use is not recommended.

21) To avoid the crowding of monuments and consequent unsightly appearance, lot owners should not close the purchase until they have advised the Company of the size, style and material and found whether the rules will admit of its being erected or not. It often happens that a stone cannot be erected because the lot is too small, or there are trees or grave in the way.

22) All extra lot markers shall be set by the employees of the Company at a reasonable charge, and level with the lawn.

23) In case of non-payment of the full price of any lot on which an interment has been made, the Company reserves the right to remove the body to a single grave, at the discretion of the Board of Directors.

24) Glass jars, tin cans, etc., placed on graves for flower holders will be removed. The company furnished at a small cost, specially made receptacles, which are sunk level with

the surface of the lawn.

25) These rules are subject to change without notice.

26) To guard and conserve the rights and interests of all the lot owners, these rules and regulations are established. The statutes of the State have made the willful violation of them a very serious offense.

Side-Talks With Girls

Taken from "The Ladies' Home Journal" December 1893

B.E.N.- Plain white stationery is considered in better taste than tinted.

J.E.B. - In making a first call a gentleman should not remain over twenty minutes.

Georgie B. - A girl of sixteen braids her hair and loops it, tying it with a black ribbon.

H.D.P. and Others - Let your men visitors care for their own hats and walking-sticks.

B.K.- I think it very improper for a girl of sixteen to go boating alone with a young man at night.

Miss Fanny - A book on heraldry will probably teach you how to arrange the genealogical tree.

M.L.B.- If a gentleman offers you his arm as he is walking home with you in the evening, you should take it.

Alice S.- As you will not be able to call on the reception day, send your card addressed to the hostess.

Mrs. H.W.- I would advise your bathing your feet in very hot water in which has been put a handful of borax.

Gretchen- I do think it very improper for any young woman to allow a man friend to kiss her whenever he wishes.

Ignoramus- A hat or bonnet is always worn at a daytime reception except by the hostess or the ladies receiving with her.

Anxious- It would be in very bad taste to inclose your visiting-card in a letter thanking a man friend for his photograph.

Hayseed- It is never proper to eat from one's knife. Bread is taken from a plate with the fingers and not with a fork.

Kathryn K.- When a gentleman assumes mourning for a parent his clothes, gloves, hat and neckwear should all be black.

G.C.G.- I think it in very bad taste indeed to play practical jokes, and the writing of anonymous letters, even for fun, is very wrong.

Pedigree Chart

No. 1 on this chart is the same as no. 1 on chart no. 1

Chart no. 1

2 Kenneth Horatio CRAMER

Born: 12 Dec 1913
Place: Fork Twp., Mecosta Co., MI
Marr:
Place:
Died: 23 Oct 1961
Place: Mecosta Co., MI

1 Irene Kay CRAMER

Born: 19 Apr 1940
Place: Fork Twp., Mecosta Co., MI
Marr:
Place:
Died:
Place:

Spouse

3 Alice Josephine MCCALL

Born: 24 Jun 1917
Place: Barryton, Mecosta Co., MI
Died: 1 Mar 1959
Place: Lakeview, Montcalm Co., MI

4 William Horatio CRAMER

Born: 8 Oct 1894
Place: Roxand Twp, Eaton Co., MI
Marr:
Place:
Died: 5 Oct 1952
Place: Big Rapids, Mecosta Co., MI

5 Nora Emma WAIT

Born: 25 Nov 1896
Place: Fork Twp., Mecosta Co., MI
Died: 22 Mar 1985
Place: Isabella Co., MI

6 William Henry MCCALL

Born: 2 Dec 1876
Place: Croton Twp., Newaygo Co., MI
Marr:
Place:
Died: 13 Jan 1955
Place: Fork Twp., Mecosta Co., MI

7 Clara Elsie SHEPHERD

Born: 16 Apr 1882
Place: Cannon, Kent Co., MI
Died: 27 May 1971
Place: Lakeview, Montcalm Co., MI

8 Henry Horatio CRAMER

Born: 16 Sep 1864 cont. _____
Place: MI
Marr:
Place:
Died: 27 Feb 1947
Place: Fork Twp., Mecosta Co., MI

9 Elizabeth Elvira WAKLEY

Born: 15 Jul 1865 cont. _____
Place: Smith Falls, Quebec, Canada
Died: 15 Apr 1943
Place: Fork Twp., Mecosta Co., MI

10

Born: cont. _____
Place:
Marr:
Place:
Died:
Place:

11

Born: cont. _____
Place:
Died:
Place:

12 Alexander MCCALL

Born: 7 Jun 1837 cont. _____
Place: Canada
Marr:
Place:
Died: 30 Dec 1908
Place: MI

13 Hannah Josephine BARTON

Born: 30 Aug 1849 cont. _____
Place: MI
Died: 27 Oct 1880
Place: MI

14 Ezra Eugene SHEPHERD

Born: 15 Mar 1858 cont. _____
Place: MI
Marr:
Place:
Died: 18 Feb 1916
Place: Newago Co., MI

15 Clara Alice INWOOD

Born: 23 Aug 1860 cont. _____
Place: Cannon, Kent Co., MI
Died: 19 Jun 1931
Place: Newago Co., MI

Prepared 24 Sep 1995 by:

Irene K. Cramer Gibbons
3515 Hoover Road
Barryton, MI 49305
USA

Pedigree Chart

Chart no. 1

No. 1 on this chart is the same as no. 1 on chart no. 1

2 Henry Horatio CRAMER

Born: 1834
Place: Herkimer Co., NY
Marr:
Place:
Died: 17 Mar 1872
Place: Beloit, Mitchell Co., KS

1 Henry Horatio CRAMER

Born: 16 Sep 1864
Place: MI
Marr:
Place:
Died: 27 Feb 1947
Place: Fork Twp., Mecosta Co., MI

Spouse

3 Delila Matilda WILLIAMS

Born: 1840
Place:
Died: 20 Oct 1864
Place: MI

4 Stephen CRAMER

Born: 1808
Place: Herkimer Co., NY
Marr:
Place:
Died: 1884
Place: MI

5 Mary Ann BOYER

Born: 2 Jan 1814
Place: Manheim, Herkimer Co., NY
Died: 1886
Place: MI

6 Ebenezer WILLIAMS

Born: ABT 1815
Place: NY
Marr:
Place:
Died: 1909
Place: MI

7 Hannah

Born: 1824
Place: NY
Died: AFT 1865
Place:

8 John Scriver CRAMER

Born: 1 Sep 1778 cont.
Place: Rhinebeck, Dutchess Co., NY
Marr:
Place:
Died: 12 Mar 1812
Place: NY

9 Catharine BATEMAN

Born: ABT 1773 cont.
Place: Ulster Co., NY
Died: ABT 1825
Place: NY

10

Born: cont.
Place:
Marr:
Place:
Died:
Place:

11

Born: cont.
Place:
Died:
Place:

12

Born: cont.
Place:
Marr:
Place:
Died:
Place:

13

Born: cont.
Place:
Died:
Place:

14

Born: cont.
Place:
Marr:
Place:
Died:
Place:

15

Born: cont.
Place:
Died:
Place:

Prepared 24 Sep 1995 by

Irene K. Cramer Gibbons
3515 Hoover Road
Barryton, MI 49305
USA

Pedigree Chart

Chart no. 1

No. 1 on this chart is the same as no. 1 on chart no. 1

2 Zachariah CRAMER

Born: 26 Mar 1753
Place: Rhinebeck, NY
Marr:
Place:
Died: 11 Feb 1818
Place: Manheim, Herkimer Co., NY

1 John Scriver CRAMER

Born: 1 Sep 1778
Place: Rhinebeck, Dutchess Co., NY
Marr:
Place:
Died: 12 Mar 1812
Place: NY

Catharine BATEMAN

Spouse

3 Rebecca SCHRIVER

Born: 17 Jan 1759
Place: Rhinebeck, NY
Died: 1 Dec 1840
Place: Ruthland, Jefferson Co., NY

4 John CRAMER

Born: 15 Apr 1715
Place: NY
Marr:
Place:
Died: ABT 1775
Place: Rhinebeck, NY

5 Catharine FUGLER

Born: ABT Feb 1726
Place: NY
Died:
Place: Rhinebeck, NY

6

Born:
Place:
Marr:
Place:
Died:
Place:

7

Born:
Place:
Died:
Place:

8 Anthony CRAMER

Born: ABT 1650
Place: Germany
Marr:
Place:
Died: ABT 1724
Place: NY

9 G (SCHARMAN) ELSASSER

Born:
Place:
Died:
Place:

10

Born:
Place:
Marr:
Place:
Died:
Place:

11

Born:
Place:
Died:
Place:

12

Born:
Place:
Marr:
Place:
Died:
Place:

13

Born:
Place:
Died:
Place:

14

Born:
Place:
Marr:
Place:
Died:
Place:

15

Born:
Place:
Died:
Place:

Prepared 24 Sep 1995 by:

Irene K. Cramer Gibbons
3515 Hoover Road
Barryton, MI 49305
USA

The Evolution of the "Delphian"

Part 3



THE SENIOR CLASS

Top Row—Gilbert McCamman, Frank Higby, Lynn Snyder, Willis Faulkner, Horace W. Wilcox, Ralph Vomberg, Floyd Amsacher, Harold Cole, Boyd Kinaman, Cole Sprague. Second Row—Lynn Van Vleet, Myrl Bottomley, Carl Nichols, Ruby Southworth, Howard Bryan, Elizabeth Racey, Howard Jochenbacher, Estella Holock, Floyd Lamb. Third Row—Vivian Smith, Bertha Kiann, Gretchen Newth, Irene Boyles, Marsha Cutler, Nina Dell, Hortense Kelly, Ethel Fuller. Bottom Row—Lulu Walte, Cleone Heyman, Marjorie Griffin, Hazel Carrick, Era Felshaw, Eleanor LaMont, Herina Hauge.

We begin this part with the 1911 "Delphian" and once again the shape and size have changed. The pages are numbered and the Delphian Board as well as the Faculty are pictured. Below are the pictures of the Board. Why is it that I tend to think that everyone is only interested in the students? Of course people are also looking for relatives who taught. The faculty pictured in this book are **Mabel R. Van Kleek** (Principal/Math); **Mary Jenkins** (History); **Ida Snell** (Latin); **Rena Chapple** (Hist., Eng., Science); **R. E. Lane** (Coach, Science); **Ottelia Sdunek** (German); **Alice MacRobert** (Commercial); **Winnifred Woodman** (English).

DELPHIAN BOARD



RALPH VOMBERG
Editor



HAZEL CARRICK
Society Editor



VINE PETERS
Business Manager



NINA DELL
Artist



HORACE W. WILCOX
Editor-in-Chief



MYRTENE KELLY
Artist



LYNN SNYDER
Advertising Manager



BLANCHE LAMBERT
Assistant Advertising Manager



LYNN VAN VLEET
Editor of Advances

The Editorial begins by saying that the Senior Class are pleased to have followed the custom of putting out the annual "Delphian", and hope that the public will overlook errors and incompleteness. They wrote somewhat what others had in the previous books: "This little book, it is hoped, will bring many pleasant memories to students for years to come. In what we have said here there is no ill feeling, nothing personal or intentional. We trust you will accept this last memory from the class of 1911 with your usual and becoming enthusiasm.

The Advertiser is acknowledged, saying that the true dedication of this book should be given to them. As they placed in their hands the money that printed this book. Which again brings to my mind that genealogist should not pass up school year books when looking for a business that a past relative may have owned. They might just be an advertiser.

Part of the editorial mentions a project that had been proposed at the first of the year whereby a debate with Albion was in view, but it died-they knew not where. They hoped that another year would find the school taking steps along this line.

Another interesting paragraph states that the Charlotte High School stands among the best in the state. That the University of Michigan had recognized the ability of the school and had placed them on their list for a period of three years more. There were nearly 20 representatives from the

high school there at the present time, several of them graduating in 1911.

A wish for an Alumni Association is suggested, stating that one should exist, and meet at least once a year, perhaps for a banquet, that the old times may be discussed and the spirit of the school kept at a high ebb.

An odd paragraph deals with foreign students. When I began reading this paragraph, I wondered what countries they were from. I found they must have been students from outside the City, as they state, "It often requires more than an ordinary effort to reach school promptly after a three, four or five mile drive, but they are right there on the minute. They stand well in class, too, and more often than we realize, those very students carry off class honors."

This year there were some very clever drawings throughout the book, and group pictures of the Junior, Sophomore and Freshman classes. They also had a play "Fifi of the Toy Shop" A comic opera, with beautiful stage settings and catchy little songs. They said in the hands of adults it would have been an absurdity, but with students for the characters it was delightful. There is a picture of the cast. The Football team as well as the Boy's and Girls basketball team are pictured. The baseball team is also pictured

1912

Same size, another color. Once again the Delphian Board is pictured, as well as the faculty. Seniors are

pictured individually again. However, this year only the Juniors have a class picture. At the top of each listing from the Juniors, Sophomore, and Freshman Classes there is one student picture. It is not mentioned who they are, but I suspect they are the class presidents, as next to their pictures is a listing of the President, Vice-President etc.

Anyone lucky enough to find relative who was a senior this year will find a little more than a picture, as beside each picture it lists their major and a little verse, which probably gave an insight to the way they were thought of.

SENIOR CLASS OF 1912

Eva Barnes
 Wesley Bintz
 Halla L. Blasier
 Bernice Rae Bosworth
 Pauline Elizabeth Champlin
 Carrol W. Collins
 Bernice Elizabeth Dawson
 Earl C. Doyle
 Gladys L. Edick
 Ruth Catherine Johnson
 Alberta Knowles
 Lena Margaret Laverty
 Cora L. Lowe
 Iva J. McUmber
 Madge E. Nichols
 Harry E. Osborn
 Sarah Margaret Peck
 Bernice Louise Peters
 Ida Mae Prince
 Carl J. Rudesill
 Loren D. Stealy
 Bess Orella Whibcomb
 Harold H. Wilton

Edna Belle Youngblood

The Editorial is rather strange this year. Almost "A lot of sound and fury signifying nothing." Who ever wrote it must have felt that the spirit of the school was dying. They relate in part that "Today the spirit of intense devotion that once bound the school in a unit seems to be lacking. No longer does the sight of the colors bring out the thunderous, reverberating cheers that were actuated by solemn, sincere patriotism. Rather more are we contented to ride on the momentum of the past, resting on our oars, being carried on by the current of past achievements.

We must all be thoughtful of the welfare of the school in its related activities. Its history must be perpetuated and its victories renewed."

They go on to the next section in the editorial, it was divided into sections by titles in 1912, "It is not our intention to set a pace in producing a book, it is merely to tell what the Charlotte High School is, what it has done and what it ought to do."

"The price of the book has been raised fifty cents and we believe that it should remain there under the present conditions. We have made this book the same size as the 1911 number. It would be well if all classes observe this, then all of the volumes might be bound as one. We wish to thank our advertisers for the aid they have given us. The Delphian is a suitable monument to the school and an advertisement in it is a constant

clarion." Rather a long editorial this year.

Superintendent **Carrick** wrote an article this year, which is four and a half pages long entitled "What Next?" Basically he gives his reason for attending college. Things have not changed much from 83 years ago it seems from reading bits and pieces of his article.

Different teachers also wrote articles of different length. There were fewer hand drawn pictures. There were pictures of some of the teams again this year.

1913

Written in the front of this book is the name (**Gertrude Todd**) Died Dec 29, 1978. When I look at these books I'm thankful to the persons who donated them to us. Here they will be used and are an asset to many people looking for information from the past.

Again the book is the same size but a different color and cover design. This book was dedicated to a teacher, **Ottelia Sdunek**. Once again the Delphian Board is pictured, as well as each class. The seniors are pictured individually again. There are also pictures of the athletic teams, the Senate and Glee Club.

The editorial is once again back to its former self. However, the theme seems to be that perhaps athletics is getting too much attention and that a need for a more symmetrical development is needed. They end this portion with "therefore, students, let

us cultivate with zeal those things which shall equip us for the struggles of real life in the great Tomorrow."

They again say that Charlotte has a crying need for a new school building. Sounds familiar doesn't it? They say "Mr. Taxpayer, why not keep up with the times? Do not force your children to attend High School in a crowded place; vote an appropriation for a large, new building that will do credit to the city of Charlotte."

Once again Superintendent Carrick wrote an article, however this time it is only a little over a page. "He states that "I am sure there never was a time in the world's history when the demand for educated men and women was so great as now. There never was a time when the opportunities were so plentiful for those who were able and willing to shoulder responsibility, to do, not to dream, and to do things worth while. Specialization is the order of the day, and, in these times, the man who succeeds is not the "jack-of-all-trades" who was in such great demand a century ago, but must be a master of a trade-one who has been trained to do one thing better than his fellows."

SENIOR CLASS OF 1913

Jay L. Dawson
Vera V. VanVleet
Florence M. Thomas
Donald H. Parker
Dorothy H. Baldwin
Frances Bartig
Harwood R. Boyd
Victor B. Boyles
Ralph C. Claflin

Robert B. Collins
 Hazel M. Curry
 Zora Davis
 Frances D. Day
 Agnes M. Donovan
 Verna B. Johnson
 Don D. Field
 Lucile R. Eschenbacher
 E. Irene Hartsuff
 Mabel F. Holden
 Vaughn Millbourn
 Elsie H. O'Connor
 Ruth M. Otte
 Marguerite L. Patterson
 Florence Pitcher
 Gladys C. Pollock
 William F. Reh fuss
 Donald W. Satterly
 Bessie M. Shaver
 Edward H. Shepherd
 Myrtle C. Slaughter
 Earl E. Stem
 Hazel E. Taylor
 Glenn S. Thompson
 Grace Uhl
 Arthur Vomberg
 Francis C. Warren
 Frank Wildern
 Max Wood
 Maurice L. Wood
 Gertrude D. Woodworth

1914

Well the Delphian did it again! It is the same size alright, but it opens from the short side. It is a different color, different design. This book was dedicated to Miss **Conscello Cole**. A very clear picture of the High School is among the beginning pages.

Once again the Delphian Board is pictured. The Editorial says "The

Class of Fourteen, in publishing this Delphian, which is larger and (we hope) better than any previous edition, is not trying to set a pace for its successors, but is merely keeping up with the growth of Charlotte High.

As we read on we learn that a new High School is finally going to be built and by 1915 will be in use. A paragraph states "Yet, in many respects there is an under-current of pathos in the contemplation of the new regime. Never again will the class of this year or past years plant their feet in the time-worn hollows of the little staircase; never again will gas be lighted of necessity in the study halls; never again will school close because of cold; never again will basket ball be held in the gloomy barracks! And while we rejoice that this is true, there is an indefinable sadness in the thought that the old shall so soon be effaced to give place to the new.

The faculty as well as all classes are pictured, in the same format as the previous year. There are still some hand drawn pictures.

SENIOR CLASS OF 1914

Fern P. Walter
 Carrie E. Hamilton
 Cora Belle Allen
 Murl H. Ammon
 Mary Marie Aulls
 Anna Marie Biggs
 Helen Florence Beaton
 Hazel Lucile Beard
 Carl D. Borton
 Karl Bintz
 Clara Louise Davids

John L. Dolson Jr.
 Thelma Kathleen Dickinson
 Edna Joy Davids
 Edwin J. Gilchrist
 Vera Ameda Geer
 George M. Fenn, Jr.
 Stella Marie Graves
 Carolyn R. Gridley
 John P. Grimes
 Glenn W. Holcomb
 Ethel M. Hartsuff
 Helen E. Hageman
 F. Milre Jacobson
 Pearl F. King
 Irene Lepard
 Glenn D. Marple
 Mary Hazel McUmber
 Eva Marie Millenbacher
 Ellsworth C. Norton
 Milo O. Osborn
 Harold Fay Newcomer
 Carl A. Rochester
 Mabel A. Rogers
 Lena Margaret Sackett
 Helen Marie Scott
 Homer A. Sears
 Marie S. Shingler
 Dean S. Spitler
 Roy C. Thornton
 Howard Otis Tolbert
 Lura Weeks
 Celeste A. Wilson
 Augusta Lucene Wright



JUST WONDERING...

how many of you have computers and what kind are they, what genealogy software do you use, and so forth?

I have a Gateway 2000, 4DX-33 with Intel 33 Mhz Processor; 8MB RAM, 3.5 diskette drive, 212 MB 13ms IDE Hard Drive, Intel Pentium Technology Ready, Local Bus Graphics Accelerator w/512 KB DRAM, 14" Color CrystalScan 1024NI, 5 16-Bit ISA Slots, 101 Key Keyboard, Microsoft Mouse, CD ROM and sound Blaster. I don't know what some of the above means.

As far as software for genealogy I use Family Tree Maker and Parsons "Family Origins".

I would very much like to see a computer group formed. I need help at times as I'm sure some of you do. Is anyone interested?

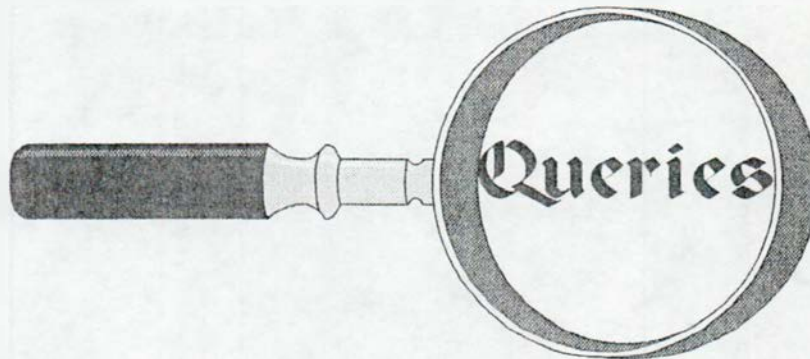
Please let us know what kind of equipment you use, and let us know if you too would like to see a computer group started.

P.S. I forgot, I have an Epson Stylus 800 Ink Jet. Not very fast, but it does a nice job for the money.

I also have a modem, which I use only for America On Line, at the moment.

How many of you have a modem and how do you use it?

Hope to hear from you!!



Queries are accepted free and will be published in each issue as space permits. If you have a query to submit, please type or print clearly and send it to: Barbara Green Puffenberger, P.O. Box 337, Charlotte, MI 48813-1223.

SPAULDING

Looking for the burial place of **Jerome** and **Catherine A. Spaulding**. May be in the Bellvue area. They had two children **Anna** born CA. 1872 and **Henry** born CA. 1874.

Mrs. Marilyn Reed, 1703 29th Ave. CT., Greeley, CO. 80631.

COOK

Looking for information on **Seely Cook** and his family. He owned land in Washtenaw Co. 1837, at some point he moved to Eaton Rapids. In 1847 he was living Morrow Co., OH. Children 1) **David**, B. 25 Oct 1818; 2) **Eunice**, B. 29 Nov 1820, married **Henry Peter Rorabeck**, 2 Feb 1842, **Henry**, B. 1816, NY, Died 13 June 1894 in Eaton Rapids; **Eunice**, B. 22 May 1914 Eaton Rapids. If any **Rorabeck** family has information on Cook family I would appreciate it. 3) **Isaac**, B. 25 Sept 1822; 4) **Charles**, B. 9 Mar 1824; 5) **Susan**, B. 9 Apr 1828. 6) Missing; 7) **George**, B. 5 June 1837; 8) **Henry**, B. 31 Dec 1839; 9) **Lewis**, B. 3 Feb 1847. *Ben Whitney, 2666 Lee St., Simi Valley, CA 93065.*

JONES

Charles, wife **Julia Ann** and young baby boy - no record after 1854. Aneida Township census; also where is **Simeon Jones** and **Bradford Jones** buried? Any help will be appreciated. *Rita Selleck, P.O. Box 608, Fletcher, NC 28732.*

WANTED

Any information, photos, family histories of Chester Township families for a Chester Township History Book. *Phylliss Smith, 2436 N. Chester Road, 517-543-4494.*

1995 Eaton County Quest Index

- A -

Abbey, Corenelius	66
Abbey, Elizabeth	66
Abbot, James	66
Abbot, Leona	66
Abby, Zilpha T.	66
Abell, Andrew Gurdie	116
Abner	58
Acley, Josephine	27
Ada, Cousin	14
Adamas, W.	186
Adams, Ella	66
Adams, Elsie	66
Adams, Jackie	85
Adams, John J.	66
Adams, Lloyd	66
Adams, Wayne	66
Ainger	164
Ainger, Daniel B.	164
Akins, Jennie	66
Akins, John	66
Albro, Grace	17
Albro, Vinnie	21
Alden, A. G.	66
Alden, Dora	66
Aldrich, Alta R.	21
Aldrich, Ann Reeve?	50
Aldrich, S. L.	2
Allen, A. B.	118
Allen, Ada	66
Allen, Cora Belle	198
Allen, Dick	82
Allen, Gardner S.	167
Allen, George	66
Allen, Jennie	112
Allen, Jessie M.	23
Allen, Joseph	18
Allen, Nathan	1
Allerton, Lulu	20
Ammon, Murl H.	198
Anderson, Celia	66
Anderson, Harry	66
Anderson, Sarah	66
Andrews, Dora	66
Andrews, Harley	18
Annie, Aunt	141
Annis, A. W.	66
Annis Emma	66
Anson, Frank	66
Anson, Lillie	66
Appleton, Claude	79

Arment, Hannah	14
Arment, Hannah	15
Arment, John	14, 15
Armstrong, H.D.	44
Armstrong, Maybel	21
Arnold, Ed Gene	97
Arnold, Nancy	66
Arnold, Nettie	66
Ashley, A.F.	66
Ashley, Alice	66
Ashley, David	66
Ashley, George	66
Ashley, Mary	66
Atkinson, Clara Orelana	176
Atkinson, Florella	66
Aulls, Mary Marie	198
Austin, C.D.	72
Austin, Jay	26
Austin, Linda K.	85
Austin, Wealthy Burt	151
Avery, Newell	94, 118
Aves, Lavern	85
Aves, Mary Ellen	85
Axford, Ella Vogan	176

- B -

Babcock, Fannie	66
Babcock, Thurman	66
Babcock, W.J.	2
Bachelor, Vera	5
Bacon, C.M.	66
Bacon, Nellie	78
Bailey, Howard	181
Bailey, Joel	169
Bair, Floyd M.	17, 21
Baird, Leita	111
Baker, Charles Leonard	116
Baker, Claudie	30
Baker, Edson	19
Baker, Mary Jean	85
Baker, Maud V.	20
Baker, Newton	30
Baker, Rev. George D.	94
Baldwin, Dorothy H.	197
Baldwin, Ellen	66
Bales, Dr. A.T.	2
Ball, A.R.	2
Bangs, Helen O.	66
Banister, Charles Dwight	98
Banks, James Kelsey	115
Barber, Bessie	79

Barber, Ella Susan	177
Barber, Frank Elbert	116
Barber, Roy	78
Barhyte, Ruby	182
Barhyte, Vern	79
Barker, Blanche B.	141
Barlow, Rev. Geo W.	93
Barnard, David	72
Barnard, Earl	
Barnard, Edmond Marey	116
Barnard, George D.	72
Barnard, Harry Jr.	72
Barnard, Harry	72
Barnard, Horace	72
Barnard, James	72
Barnard, Joseph	73
Barnard, Mrs. George D.	72
Barnard, Mrs. Harry	72
Barnard, Rose Krause	72
Barnes, Chris	66
Barnes, Edith	66
Barnes, Eva	196
Barnes, Eva A.	46
Barnes, George	171
Barnes, Irene	66
Barnes, John	66
Barnes, Mabel	66
Barnes, Mr. V.V.	49
Barnes, Mrs.	45
Barnes, Mrs. V.V.	49
Barnes, Susan Adella	177
Barnes, V.V.	49
Barnes, W. J.	49
Barnes, Wm. J.	46
Barney, Geo. J.	43
Barney, Wm. G.	41
Barnum, Daniel Plumer	97
Barr, Effie M.	21
Barrett, Hannah	14
Barrett, Jennie	19
Barrett, Thomas	7
Barrow, Minnie	49
Barrow, Mrs. E.F.	49
Barrows, Ransom Moore	97
Bartig, Frances	197
Bartlett, E.N.	132
Bartlett, Hattie	66
Bartlett, Laura	144
Barton, Hannah Josephine	191
Bastedor, Fred	66
Bastedore, Bertha	66

1995 Eaton County Quest Index

Bateman, Catharine . . . 192, 193	Benedict, Mary Elizabeth . . 175	Bishop, Roy 111
Bateman, Leonard 67	Bennett, Geo. 127	Bismark 164
Bateman, Lucinda 67	Benson, Almeda 67	Blacker, Ella 20
Bateman, Myron E. 126	Benson, Leslie 67	Blackett, Mabel 67
Bateman, Orville 67	Benson, Mae 19, 21	Blackett, Mrs. F.I. 67
Bateman, Ray 67	Benson, Martha 67	Blair, William Thomas 97
Bates, Anna 78	Bentley, Hector 67	Blanchard, Dr. 67
Batley, Albert 67	Bentley, Homer S. 67	Blanchard, Florence Susanna . . 177
Batley, Maggie 67	Bentley, Mary 67	Blasier, Halla L. 196
Battle, Lizzie E. 118	Bentley, Mary B. 67	Blasier, Jettie 110
Battle, Miss Lizzie E. 96	Bentley, Mrs. Carrie 67	Blazier, Mina 18
Bauman, Dale 67	Benton 164	Blodgett, Henry N. 127
Bauman, Floy 67	Benton, Tom 164	Blodgett, Isaac 67
Baumer, Augustus 67	Berner, Anton 2	Blodgett, Mariah 67
Baumer, Dorr 67	Berry, Geo. 2	Blodgett, Rebecca O. 67
Baumer, Mary 67	Bers, Dora 67	Blodgett, Richard 67
Baumer, Peter 67	Betz, George Andreas 71	Blodgett, Sara S. 67
Beach, Fred S. 185	Betz, George J. 71	Bloomfield, Alice May 71
Beadon, Effie 67	Betz, Jesse 166	Bloomfield, Daniel 71
Beadon, Robert 67	Betz, Mildred Anna 71	Bluma, Annie 145
Beaman, Alice 67	Betz, Nettie 67	Bluma, Frank 145
Beaman, C.M. 67	Betz, Wm. 67	Boardman, Charles Parsons . 116
Beaman, D.M. 67	Bibbings, Jean 85	Boardman, Helen 49
Beaman, Lou 67	Bibbings, John 85	Boardman, Jennie 49
Beard, Hazel Lucile 198	Bick, Wilber 21	Boardman, Warren 49
Beasone, Ella 67	Bicker, Jessie 19	Boatman, Ernest 67
Beasone, Peter 67	Bieglow, Rufus 133	Boatman, Jacob 67
Beasore, Winford J. 67	Biggs, Anna Marie 198	Boatman, Lovilla 67
Beaton, Helen Florence . . . 198	Biggs, Inez 67	Boatman, Maime 67
Beaubier, Kate 21	Biggs, Warren 67	Boddy, Bernice 67
Beck, Martia H. 110	Billingsley 85	Bodell, Joyce 85
Beck, Wilber 20	Billingsley, Anita Louise . . 70	Bogg, A.R. 50
Bedford, H.D. 21	Billingsley, Anita 58	Bohn, John Jacob 116
Beech & Streeter 2	Billingsley, Harold Curtis . . 70	Boice, H. L. 67
Beekman, D.H. 21	Billingsley, Norbert Curtis . . 70	Boies, Clara Experience . . . 176
Beitler, K. H. 67	Billingsley, Oliver R. 70	Boies, Hon. John K. 94
Belding, Rena 84	Billingsley, Robert 70	Bolles, Levi 2
Bell, Leon Edwin 114	Bintz, Karl 198	Bolock, Estella 112
Bell, Peter A. 2	Bintz, Wesley 196	Bonney, Lottie Barney 23
Bellevue 171	Birchard, Fitch Andrew . . . 114	Bonney, Lottie 181
Bellow, Jessie Jane 16	Birney, Addie 67	Bonney, Rev. J. R. 45
Bellows, Jessie Jane 13, 14	Birney, Frank 67	Bonney, Stella 181
Bellows, Nellie 19	Birney, J.D. 67	Bonney?, Nettie 23
Bellows, Warren E. 9	Birney, Jennie 49	Boody, Amos 67
Belnap, Abbie 67	Birney, Margaret 67	Boody, Bernice 67
Belnap, Charles 67	Bishop, Bess 112	Boody, Eva 67
Belnap, Clark 67	Bishop, Flora 67	Boody, Josephine 67
Bemment, William 67	Bishop, Ida 67	Boody, M. J. 67
Benedict, Arlie 17	Bishop, Judson 19	Boody, Mary 67
Benedict, Jennie 21	Bishop, Ransom 21	Boody, Mildred 67
Benedict, L.E. 38	Bishop, Roy L. 110	

1995 Eaton County Quest Index

Boody, Wm.	67	Brazette, Joseph	57	Brown, Hayden	68
Boorn, Allie	67	Breed, Rev. D.P.	36	Brown, Hazen	6
Booth, E.A.	67	Breede, Rev. D. Payson	45	Brown, Lynn	6
Booth, Guy	127	Breen, Rev. D.P.	50	Brown, M. Viola	23
Booth, Jennie	67	Brenner, George	166	Brown, Martha M.	68
Booth, Julia E. Hall	7	Bretz, A.K.	186	Brown, Ralph H.	6
Booth, Julia E.	8, 16	Brewer, Elizabeth	67	Brown, Sarah	68
Borden, George Webster	98	Brewer, Irvin J.	67	Brown, Shar	99
Bordwell, Eliza	118	Brewer, L. B.	67	Brown, Sheryl Lee	85
Borton, Carl D.	198	Brewer, Warren	67	Brown, Wm. E.	68
Bostwick, Edmond	171	Briggs, Frank	27	Bryan, Chas.	79
Bosworth, Bernice Rae	196	Briggs, Irvin	27	Bryan, Thomas D.	165
Bosworth, C.W.	20	Briggs, Irving	27	Bryant, W.G.	50
Bosworth, M.K.	168	Briggs, Louis M.	50	Buck, Isa Annetta	177
Bottomley, Harry	182	Briggs, Prof.	50	Buck, Jennie Elmira	175
Bottomley, Isaac W.	151	Briggs, Sylvia	19	Buckland, Czarens A.	33, 34
Bowers, Dora	67	Brigstack, E.	23	Buckland, John Calvin	33
Bowers, Edward	67	Brinningstool, Martha	67	Buell, Bingham Thomas	116
Bowers, Mildred	67	Britten, Bernice	67	Buell, Darius David	97
Bowes, Daniel	83	Britten, Dora L. ? Andrews	57	Bukman, Ida	20
Bowes, James	83	Britten, E.P.	67	Bull, Florence Nightingale	177
Bowes, Sarah Jane	71	Britten E.R.,	67	Bull, George	132
Bowes, Will	83	Britten, Edward Rush	57	Bullock, Motier Acklin	97
Boyd, A.R.	67	Britten, Edward P.	57	Bullock, Rev. John	82
Boyd, Ella	67	Britten, Ethel	67	Bunker, Jane E.	68
Boyd, Harwood R.	197	Britten, Henrietta R.	67	Bunker, Wallace	68
Boyer, Mary Ann	192	Britten, Henrietta	57	Bunting, Harold	112
Boyers, Wesley J.	23	Britten, Martha L.	57	Burch, H.F.	2
Boyles, Victor B.	197	Britten, Nora	83	Burgess, Eida	68
Bradford, David B.	170	Britten, Pearl	67	Burgess, Eva O.	68
Bradley, Dale	6	Britten, Ridley	67	Burgess, Glenn	68
Bradley, Edward	169	Brockett, L.B.	186	Burlison, Lewis	68
Bradley, J.B.	67	Bromberg, Leon	27	Burnham, Mary A.	118
Bradley, Jane	6	Bromelin, M.P.	67	Burnham, Miss Mary A.	96
Bradley, Jas. B.	50	Bromelin, Magie	67	Burns, Blanch	68
Bradley, John	18	Bronk, Sam'l	68	Burns, Clayton	68
Bradley, Pearl	67	Brookfield	164	Burns, Clyde	149
Brainard, A.B.	67	Brooks, Ray (Mr. & Mrs.)	9	Burns, Dora	68
Brainard, A.H.	36	Broughton, Frank	68	Burns, Melvin	68
Brainard, Helen	67	Broughton, Lizzie	68	Burns, Sara Kennedy	149
Brainard, James B. Lieut.	124	Brouse, Henry	26	Burr, Allen R.	136
Brainard, Martha	67	Brouse, Lon I.	110	Bursley, Bert	182
Brainard, Mrs.	36	Brown, Alice M.	23	Burt, Alvin	151
Brainard, Orderly	122	Brown, Aliva	18	Busch, Hattie	68
Brainerd, Lieut James	128	Brown, Andrew	68	Busch, Irwin	68
Bramble, Anna	67	Brown, Carroll S.	185	Bush, Anna	68
Brandt, Signa Evelyn	61	Brown, Charles H.	173	Bush, Chas.	44, 68
Branerd, A.H.	127	Brown, E.J.	68	Bush, Lizze	68
Braun, William	85	Brown, Edwin Joseph	115	Bush, Willis	68
Brazette, Ann ?	57	Brown, Elizabeth	85	Butler, B.H.	68
Brazette, Cordelia	57	Brown, Ethel	17	Butler, Fred	68

1995 Eaton County Quest Index

Butler, Grace 68
 Butler, Katy Estella 177
 Butler, Lucy Jane 177
 Butler, Sarah L. 68
 Butley, Cecelia 68
 Butley, Clarence 68
 Butterfield Corners 165
 Butterfield, H.Q. 94, 118
 Butterfield, Hiram 165
 Butterfield, Rev. Horatio Q
 94, 95
 Butts, John 68

- C -

<p>C & L.H. Railroad 169 Cadwell, Edwin B. 50 Cady, George 26 Cady, Jerome 26 Cady, Maude 18, 21 Cady, Perley Phillip 98 Camp, Carrie 68 Camp Creek 165 Camp, Will 68 Campbell, Angeline E. 31 Campbell, Angeline Clark Campbell, Anna 177 Campbell, Archibald ... 89, 148 Campbell, Clarence B. 68 Campbell, Jennie 21 Campbell, Lovinnie 18 Campbell, Martha 68 Campbell, Ohmer 89, 148 Campbell, P. 2 Campbell, Robert 89, 148 Campbell, Robert W. 31 Campbell, Wallace 89, 148 Canada Settlement 165 Canfield, Huldah 68 Canfield, Irvin S. 50 Canfield, Wilson 68 Capron, Mrs. Della 68 Cargell, S.S. 2 Carlisle 165, 168 Carman, George P. 171 Carmel 165 Carol, Russell 85 Carpenter, Cass 33, 34 Carpenter, Elanson 33 Carpenter, Veva D. 33, 34 Carr, Ella 68 Carr, Harry 18</p>	<p>Carrick, Hazel 194 Carrick, Superintendent ... 197 Carrier, M. 68 Carroll, Emma 49 Carroll, J. H. 49 Carroll, Lizzie 49 Carroll, Mrs. T.H. 49 Carroll, W.N. 46 Carroll, Walter N. 45, 49 Carter, G.w. 182 Case, Eula 110 Case, Willard 141 Casier, Richard 89 Casler, Charles 68 Casler, Emmas 68 Casler, Ethel 112 Casler, Norald 68 Casler, Spurgeon 23 Cass, April 111 Cassler, Henry 133 Cazier, Adelbert Delbert ... 89 Cazier, Carrie Mae 89 Cazier, Elsie 89 Cazier, Harry 89 Cazier, Loretta 89 Cazier, Martha Nettie 89 Cazier, Myrtle Ann 89 Cazier, Nettie Rille 89 Cazier, Perry H. 89 Cazier, Richard 89 Cazier, Samuel 89 Cazier, William Walter 89 Center 165 Chadwick, Clyde 68 Chadwick, Ella 68 Chadwick, George W. 95, 113, 118 Chaffee, Iva 68 Chaffee, Rose 68 Chafflin, John 68 Chafflin, Mabel 68 Chalender, Ronald 85 Chalender, Sharon 85 Challender, Belle 29 Challender, Clarence 29 Challender, Emma 29 Challender, Mettie 29 Champlin, Pauline Elizabeth 196 Chaney, Walter Albert 102 Chapel, Carrie Carista 177</p>	<p>Chaplin, Marie A. Hall 13 Chaplin, Marie 85 Chaplin, Marie Hall ... 10, 16, 25 Chaplin, Thomas, S. Capt. & Chaplin, Thomas Stark 13 Chappel, Bessie 68 Chappel, Helen 68 Chappel, Howard 68 Chappell, Claude 78 Chappell, Mattie J. 23 Chapple, Rena 194 Charlesworth 165 Charlotte 171 Chase 124 Chase, Charles P. 94, 95 Chase, Lucinda 31 Cheney, Alonzo 68 Cheney, Bertha 111 Cheney, George 167 Cheney, Lucy 68 Chester 166 Chester Station 166 Childs, Carlos Webster 116 Childs, Maary Amarilla ... 177 Christian, Ella 21 Christmas & Delamater 2 Christmas, H.J. 68 Christmas, Lillian 68 Church, E.T. 186 Church, Irene 85 Claffin, Deek 68 Clafflin, Clara 68 Clafflin, Arthur Herbert ... 114 Clafflin, Bennett I. 164 Clafflin, Ralph C. 197 Clapper, Kathleen 18 Clark, Addie 141 Clark, Amelia 147 Clark, Angeline Campbell ... 148 Clark, Annie 141 Clark, Bessie V. 141 Clark, Ella Angeline 31 Clark, Emma Leona 177 Clark, Estella 177 Clark, Father 32 Clark, George Herbert 116 Clark, George Washington ... 71 Clark, Grace 141 Clark, Henry 169 Clark, Jane 31 Clark, Jane 32</p>
---	--	--

1995 Eaton County Quest Index

Clark, John	32	Colgrove, C.H.	186	Cook, Martha (Mattie)	56
Clark, M.L.	68	Colgrove, Phillip Talor	98	Cook, Mary (Mamie)	56
Clark, Mary Anne	71	Collar, Blanch	68	Cook, Sarah	132
Clark, Mary	32	Collar, C.A.	68	Cook, Seely	200
Clark, Mary Ida	176	Collar, Effie	68	Coombs, Rachel	68
Clark, Mother, Mother	32	Coller, F.	19	Coon, Marion Francis	70
Clark, Phebe	32	Coller, Fannie	23	Coon, Vera Elizabeth	70
Clark, Rev. Calvin	94	Collins, Carol	173	Cooper, Elsie	112
Clark, S.	134	Collins, Carrol W.	196	Cooper, May	21
Clark, Samuel	32	Collins, Frank	18	Coopman, Chas.	68
Clark, Samuel	31	Collins, G.V.	132, 186	Coppock, Lydia	31
Clark, Wesley A.	141	Collins, J.B.	132	Corbin, E.D.	68
Clark, William Lewis	31	Collins, Mrs. S.L.	68	Corbin, Ella	68
Clarke, Dorothy	85	Collins, Robert B.	198	Corbin, Roy	68
Clay, Don	28	Collins, Sylvester	186	Corbin, Virgil	68
Clayton, P.P.	2	Collins, Walton	173	Cordley, Rev. Richard	93
Clegg, Pearl	68	Collins, William W.	131	Corn, Iva	68
Clegg, Will	68	Collridge, Susan	50	Corn, O.M.	68
Cleveland, Myron Oliver	116	Colly, John	45	Cornell, Oma	181
Clifton, Anna	68	Colton, Capt.	73	Cornish, Brenda Tanner	85
Clinton Junction	166	Combs, Patricia	85	Cortright, Gale	111
Clough, Marina	68	Comstock, Egenia Luella	177	Coryell, Dinah	33
Coates, Jessie	84	Comstock, Helen Antoinette	177	Cotten, Lydia	68
Coates, Orrie	84		177	Coulson, Olive	68
Cobb, E.W.	30	Conger, Amanda	143	Coulson, W.S.	68
Cobb, Vania	29, 30	Conger, Jacob	143	Coultrin, E.	68
Cobb, W.E.	68	Conklin, Allen	18, 21	Coultrin, May	68
Cochran, Francis	171	Conklin, Clarence	68	Count, Edna	109
Cochrane, George	68	Conklin, Dana	110	County Line	166
Cochrane, Lettie	68	Conklin, Danl.	68	Cousino, Marcy	85
Cochrane, Margie	68	Conklin, Edith	20	Covey, Don	68
Cockcroft, Wm.	68	Conklin, Etta	68	Covey, Ora	68
Coe, A.	2	Conklin, Jane O.	68	Cowan, Chester	68
Coe, Phoebe	68	Conklin, Mamie	68	Cowan, George	68
Coenell, Mattie	119	Conklin, Mrs. Ella T.	68	Cowan, Hetty	68
Cogsdill, Affa	27, 78	Conley, John E.	147	Cowan, Myrtie	22
Cogsdill, Howard	109	Conley, Tracy	85	Cox, Elzada	69
Cogsdill, Messrs.	77	Conlon, T.A.	19	Cox, Mat	83
Cogsdill, Ray	27	Cood, David	200	Cox, Walter	69
Cogswell, Maggie	30	Cook, Addie O.	68	Coy, William Oliver	116
Cole, Caroline Eliza	176	Cook, Charles	56	Cozier, Adelbert Delbert	89
Cole, Cecilia Ellen	176	Cook, Charles	200	Cozier, Elsie	89
Cole, Consello	198	Cook, Charles Levy	57	Cozier, Nettie Rille	89
Cole, Dalton	112	Cook, Eli	56, 57	Cozier, Richard	89
Cole, Emma Jane	177	Cook, Elizabeth	56, 57	Cozier, William Walter	89
Cole, H.	2	Cook, Erastus	56	Cramer, Anthony	193
Cole, Leydia	143	Cook, Eunice	200	Cramer, Edith	69
Cole, Lois	147	Cook, Isaac	200	Cramer, Henry Horatio	191, 192
Cole, Plym	20	Cook, Jay	56	Cramer, Irene Kay	191
Cole, Robert	85	Cook, Lewis	200	Cramer, John	193
Coleman, William	128	Cook, Manie A.	57		

1995 Eaton County Quest Index

Cramer, John Scriver . . . 192, 193	Culver, Edith 69	Davis, Friederike, Dorothea . . 61
Cramer, Kenneth Horatio . . 191	Culver, Fred 69	Davis, J.A. 21
Cramer, Stephen 192	Cummer, Elmer Charles . . . 116	Davis, Leona 69
Cramer, William Horatio . . 191	Cumming, Anna N. 141	Davis, N. H. 69
Cramer, Zachariah 193	Cummings, Cyrus 132	Davis, W.B. 69
Crampton, E.E. 69	Cunningham, Hannah El45, 148	Davis, Wm. A. 2
Crampton, Juanita A. 85	Cunningham, Hannah 149	Davis, Zora 198
Crampton, Lewie 84	Cunningham, Richard 148	Dawson, Bernice Elizabeth . . 196
Crampton, Mary 69	Curry, Hazel M. 198	Dawson, Jay L. 197
Crampton, Merton 84	Curtis, Cora Nye 20	Day, Frances D. 198
Crampton, Verna 84	Curtis, Cora 17	Day, Georgia E. 21
Crandall, W. 69	Curtis, Cornelia Melissa . . 177	Day, Georgia 78
Crane, Amaziah 69	Curtis, Frank Edward 114	Day, Millie 18
Crane, Cora 69	Curtis, James H. 110	Dayton, Mary 69
Crane, George Edward . . . 114	Curtis, James 110, 111	Dayton, R.P. 69
Crane, J.E. 69	Curtis, Miriam Hoy 85	De Glia, F. H. 69
Crane, Marion 69	Curtis, T. 131	Dean, Abbie E. 42
Crane, Mattie 69	Cushing, Ella C. 133	Dean, Bertie 27
Crary, Isaac E. 171	Cushing, Frank 79	Dean, Beulah 18
Craun, Francis 69	Cushing, Frank B. 133	Dean, Chas 79
Craun, Harry 69	Cushing, Rollo 151	Dean, Eliza Ella 176
Craun, Ira 69	Custer, B.H. 69	Dean, Frank Allen 97
Craun, Rosanna 69	Custer, Ethel 69	Dean, Lewis 27
Craun, Temperance 69	Custer, Henry 69	Dean, Mrs. 43
Crawford, Belle 69	Custer, Jesse 69	Dean, Tyler Ingersoll 116
Crawford, M.D. 69	Custer, Laura 69	Deatsman, Rhoda 18
Crawford, Maurice 181		DeBar, Eliza J. 69
Creitz, Royal J. 110		DeBar, N.J. 69
Creore, Mrs. A. O. 69		Decke, Lenora L. 110
Crittenden, Allen Nash . . . 143		Decker, Addie 69
Crittenden, Rosa May 143		Decker, Irvin 69
Crittenden, Silas Reed 143		Decker, Kenneth 69
Crocker, Frank 69		Decker, Maggie 69
Crocker, Jennie 69		Decker, Oscar 69
Crocker, Jesse 69		Decker, Otis 69
Crocker, Mae 69		Decker, Sylva T. 69
Crocker, Maude 69		Decker, Virginia 69
Crocker, Ray W. 69		DeCock, Camille 101
Crocker, Zetta 69		DeCoursey, J. 69
Cronk, Delbert 23		DeCoursey, Vera 69
Crosby, John Abbot 97		Deer, Hattie 19
Crosier, Howard 28		DeGolia, Mary 69
Croston, Anne C. 85		DeGolia, Harry S. 69
Crother, William 169		DeGolia, Nellie 69
Croup, May 79		Dell, Nina 194
Crowe, A. 2		Delta 166
Culbert, George Wilbert . . . 71		Delta Center Methodist 80
Culbert, Mable Georgina . . . 71		Delta Mills 166
Culbert, William James . . . 71		Delwood 166
Culbertson, Ethel 109		Demler, Eliza 155
Culver, Donald 69		DeMott, John 33, 34

- D -

D. Stirling & Bros. 130
Daltonville 166
Dane, Ruth M. 85
Daniels, J.L. 94, 118
Daniels, Joseph L. 95
Daniels, Rev. Joseph L. . . . 94
Darken, Chas. B. 128
Darling, Hazel 69
Davenport, William W. . . . 133
Davids, Clara Louise 198
Davids, Edna Joy 199
Davidson, Annie 69
Davidson, Jacob 30
Davidson, Jake 29
Davidson, James 29
Davidson, Jay 29
Davidson, Jennie 29
Davidson, Jessie 29, 30
Davidson, John 69
Davidson, Mary 29
Davidson, Nellie 30
Davidson, R.E. 69
Davis, Eva 182

1995 Eaton County Quest Index

DeMott, John Wilfred . . . 33, 34
 DeMott, Jr. John Wilfred . . . 33, 34
 Denesuk, Lena . . . 59
 Denison, Ella Mary . . . 177
 Dennie, Ettie . . . 78
 Dennie, Sadie . . . 109
 Denniston, Anna . . . 111
 DeRiemer, Peter . . . 168
 Deuel, Carrie . . . 18
 Deuel, Charles Culver . . . 98
 Devic, Suzanne . . . 85
 Dewater, Anna . . . 69
 Dewater, Ernest . . . 69
 Dewey, Barbara A. . . . 110
 Dickinson, Anna . . . 110
 Dickinson, Ella Sophia . . . 176
 Dickinson, L. D. . . . 83
 Dickinson, Thelma Kathleen . . . 199
 Diewertje, Waltraff . . . 3
 Diggs, Wm. S. . . . 130
 Dilley, Vera . . . 19
 Dillman, Marguerite . . . 85
 Dimon, Isaac M. . . . 171
 Dimondale . . . 167, 171
 Disbrow, Mary . . . 69
 Disbrow, Peter . . . 69
 Disbrow, Phines . . . 69
 Doak, A.J. . . . 69
 Doak, Blanch . . . 69
 Doane, Hettie Jane . . . 71
 Doane, William Allen . . . 71
 Dole, Charles S. & Co. . . . 132
 Dolson, Donald F. . . . 90
 Dolson, David Elmore . . . 90
 Dolson, David . . . 90
 Dolson, Don . . . 90
 Dolson, Dr. J. Lewis . . . 90
 Dolson, Gerald . . . 90
 Dolson, John L. . . . 90
 Dolson, John L. Jr. . . . 199
 Dolson, William Elton . . . 90
 Donovan, Agnes M. . . . 198
 Doust, Rev. . . . 44
 Dow, Ashley . . . 181
 Dow, Grace . . . 23
 Dow, L.P. . . . 69
 Downing Wesley . . . 18
 Downs, Wm. . . . 69
 Doxsie, Georgia a. . . . 20
 Doyle, Earl C. . . . 196

Drake, Arthur . . . 182
 Drake, Dorothy . . . 182
 Drake, Mrs. S.G. . . . 73
 Drake, Walter . . . 182
 Drake, William . . . 168
 Drattle, Ada . . . 69
 Drattle, Chas . . . 69
 Driscoll, Emma Elizabeth . . . 145
 Driscoll, Thomas . . . 148
 Drury, Marie . . . 17
 Drury, S.F. . . . 118
 Drysdale, Alexander . . . 44
 Dubois, Laura Lonetta . . . 177
 Dubuar, Charles Levi . . . 98
 Dukes, Vicki I. . . . 85
 Dunbar, Carrie . . . 69
 Dunbar, Jane . . . 57
 Dunham, James . . . 69
 Dunlap, Elizabeth . . . 69
 Duntun, Lucian H. . . . 151
 Durant, Samuel W. . . . 185
 Dutton, Mrs. A. C. . . . 69
 Dwight, Maude . . . 69
 Dwight, Wm. . . . 69
 Dyer, Kittie . . . 18

- E -

Eagle Hotel . . . 130
 Easey, Ann . . . 141
 East Bellevue . . . 166, 170
 East Windsor . . . 167
 Eaton . . . 167
 Eaton Centre . . . 167
 Eaton, John H. . . . 172
 Eaton Rapids . . . 172
 Eckard, Carrie . . . 69
 Eckard, Clare . . . 69
 Eckard, Homer . . . 69
 Eckard, Lewis . . . 69
 Eckard, Paul . . . 69
 Eddy, Debra . . . 85
 Eddy, Frank . . . 83
 Eddy, Rev. Zachary . . . 94
 Edick, Gladys . . . 196
 Edington, Naomi . . . 69
 Egan, Adeline . . . 69
 Egan, Blanch . . . 69
 Egan, H.P. . . . 69
 Eisele, Joe . . . 72
 Eisele, Walter . . . 72
 Eldred, Bess . . . 69

Eldred, Charles . . . 69
 Eldred, John . . . 69
 Eldridge, Julia . . . 85, 148
 Ellis, Edgar Clarence . . . 98
 Ellis, George Norton . . .
 Ellison, Caroline . . . 69
 Ells, Harry . . . 79
 Ells, Jessie . . . 18
 Ellsworth, Charity . . . 69
 Elmer, Fannie A. . . . 97
 Elmer, William Henry . . . 98
 Elmira . . . 167
 Elsasser, G. Scharman . . . 193
 Ely, Emily May . . . 177
 Ely, George Melvin . . . 97
 Engel, Edith . . . 85
 Enos, B.H. . . . 2
 Enos, I.W. . . . 2
 Epley, Lottie . . . 69
 Erb, Mary Ellen . . . 89
 Erisinger, Roy . . . 110
 Eschenbacher, Lucile R. . . . 198
 Esler, B. . . . 2
 Esler, Herbert . . . 69
 Esler, John . . . 2
 Esler, Lotie . . . 69
 Estes, B. . . . 136
 Etson, Helen . . . 111
 Evans, C. S. . . . 69
 Evans, Emma . . . 69
 Ewing, Robert . . . 20, 21

- F -

Fabiano, George . . . 69
 Fabiano, Mary . . . 69
 Fairchild, J. D. . . . 69
 Farleigh, June . . . 85
 Farrand, Florence . . . 69
 Farrand, T. A. . . . 69
 Farrand, Vera . . . 69
 Farrand, Warren . . . 69
 Fast, Wade . . . 18, 21
 Faulkner, Ira . . . 146
 Faulkner, Marvin Ira . . . 146
 Faulkner, Mary Dehlia . . . 146
 Faxon, Mary Vestaline . . . 177
 Fellows, William Austin . . . 114
 Felshaw, Era . . . 112
 Fench, C.S.G. . . . 17
 Fenn, George M. Jr. . . . 199
 Fenn, Lizzie . . . 20

1995 Eaton County Quest Index

Fenn, Mabel	109	Fletcher, William Adin	114	Frace, Don I.	110
Fenske, Lois	85	Fleury, Mary	112	Fralick, Henry	94
Fenske, Lois Wallace	142	Fleury, Ruby A.	19	France, Rev. J.H.	93
Ferguson, Evangaline	23	Flower, Harley	181	Franch, Ethel	105
Ferguson, Gertrude	105	Flower, Jason	181	Franch, Robt.	105
Ferguson, Grace	111	Flower, Vera	181	Frank, Millie A.	21
Ferguson, R.G.	105	Flugel, Fredericka	71	Frankforts, Earl	105
Ferguson, W.H.	2	Flynn, Maggie	105	Frankforts, Elizabeth	105
Fero, Hiram	136	Folwer, Mrs. H.	105	Frederick, Rev. Gilbert	35
Ferris, Mae	105	Foote, E.A.	186	French, Charles J.	57
Ferry, D.M.	94	Foote, Josephine	105	French, Edward	105
Fiegley, Ada	105	Foote, Luman	132	French, Eli	57
Field, Beulah	105	Foote, Melville Whiting	115	French, Elizabeth	57
Field, Don D.	198	Foote, Ralph	105	French, George	44
Field, G.E.	182	Ford, Frank	19	French, Hazel	110
Field, Marshall	182	Ford, Henry	72	French, Inez	105
Field, Wm.	105	Ford, L.W.	20	French, Julia	105
Fields, Marietta	105	Ford, Lewis M.	17	French, Martha	57
Fields, T.C.	105	Ford, Robert	82	French, Mary	57
Figg, E.	21	Foreman, George	48	French, Sarah	105
Figley, Wm.	105	Foreman, May Louise	48	Friedley, Elma	105
Filloon, Laura Loe	70	Foreman, Nellie	48	Friedley, M.W.	105
Finch, Ben	105	Foreman, T.	2	Frith, Susie	17
Finch, Herbert	105	Forward, A.E.	105	Fritzler, Susannah	86
Finch, Mae	105	Forward, Bessie	105	Frost, Jennie A.	105
Finch, Otis	105	Forward, Edith	105	Fruci, Ben	105
Finch, Rosa	105	Foster, Frank Augustus	98	Fruci, Nora	105
Fink, Reva	105	Foster, Harry Howard	98	Fry, Eva	105
Finney, Minerva	7	Foster, Rev.	47	Fry, Jas.	105
Fishbeck, P.M.	105	Foster, Rev. Geo. R.	45	Fugler, Catharine	193
Fisher & Co.	2	Foster, W.C.	186	Fuller, Agnes	105
Fisher, Joseph	105	Fowler, Charles B.	105	Fuller, Anson	2
Fisk, Dr. L.R.	40	Fowler, Chas	105	Fuller, W.D.	105
Fiske, Rev. Dr.	43	Fowler, Cora	105	Fulton, Willis	185
Fitzgerald, Myrtle	85	Fowler, Flossie	105		
Fitzgerald, Nora Caroline	176	Fowler, Grace	105	- G -	
Fitzgerald, Reuben	171	Fowler, Hally	105	Gale, Fred	105
FitzGerald ?	20	Fowler, Linus	105	Gale, H.H.	186
FitzGerald, Eliza	20	Fowler, Mareta	105	Gale, Maude	105
FitzGerald, Fred	19	Fowler, Nellie	105	Galiger, James Philip	115
FitzGerald, Jessie	19	Fowler, Rose	105	Gallery, A.D.	50
Flaherty, Eddie	21	Fowler, S.W.	132	Gallery, Flora	105
Flaherty, Matthe	19	Fowler, Seth	105	Gallery, J.H.	105
Flanders, John	127	Fowler, Walter	105	Galusha, Florence M.	84
Fleming, George	112	Fowler, Wm.	105	Galusha, Grace G.	21
Fleming, Margaret	177	Fox, Helen	105	Galusha, Roy	84
Flemming, Andrew	105	Fox, Herbert	105	Galusha, Walter	84
Flemming, Mary	105	Fox, Lori	85	Galvin, Bessie	105
Fletcher, Ben	44	Fox, Marion	86	Galvin, David	105
Fletcher, Pearl	182	Fox, Minnie	105	Galvin, Ira	105
Fletcher, Pearle	182	Fox, T.C.	105	Gardner, Eunice	22

1995 Eaton County Quest Index

Garland, Jane T.	105	Gilmore, Elizabeth	106	Granger, Earnest	27
Garland, Martin	105	Gladding, Eleanore	106	Granger, Phil	27
Gary, Dana	105	Gladding, Sarah	106	Grant, Marjorie	112
Gary, E. S.	105	Gladding, Willis	106	Graves, Kate Edna	177
Gary, Jas.	105	Glading, Ada	147	Graves, Stella Marie	199
Gary, Nellie	105	Glading, Aurelia c.	147	Gray, Anna	106
Gary, Vern	105	Glading, Henrietta	147	Gray, John	106
Gaston, Frederick Yale	98	Glading, Onslow H.	147	Gray, Rev. W.B.D.	45, 49
Gates, E.B.	44	Glading, Rebecca P.	147	Grayburn, Clarissa Louisa	141
Gates, Lydia R.	42	Glascoff, George	106	Grayburn, George	89
Gavett, Blaine	44	Glascoff, Ida M.	106	Grayburn, Sdarah Mary	71
Gaylord, Ama	79	Glendening, Rose Burns	149	Grayburn, Wesley	141
Gedde, Violet	86	Godfrey, Bertha	106	Green, A.L.	118
Geer, Femont	105	Godfrey, Ida L.	106	Green, Albertus L.	172
Geer, Vera Ameda	199	Godfrey, Silas	106	Green, Albertus Payne	116
Gehman, Addie	27	Godfrey, W.S.	106	Green, Anna	106
Gehman, Clavin	27	Godsmark, Wm. Wilberforce	97	Green, Barbara Puffenberger	55
Gehman, Eddie	27	Gohern, Edna	106	Green, Clare	106
Gehman, Emma	109	Gohern, F. N.	106	Green, Clarke	106
Gehman, Willie	27	Gohern, Irma	106	Green, Cynthia A.	108, 182
Geib, L.F.	105	Goodrich, Aza	26	Green, Cynthia	23
Geib, Minnie	105	Goodrich, Charlie	29, 30	Green, Frank Noyes	114
Gensterblume?, E. Bel.	20	Goodrich, Clara	29	Green, Fredrika Maria	175
Gerrish, Abner Harris	98	Goodrich, Clara	29	Green, Gertrude	106
Geyer, Patricia	86	Goodrich, Columbus	26	Green, John	106
Gibbons, Irene	86	Goodrich, Henry	106	Green, John C.	88
Gibbs, Beatrice	105	Goodrich, Josie	30	Green, Leila	109
Gibbs, Eugene	83	Goodrich, May	176	Green, Millie	106
Gibbs, Myra	105	Goodrich, Ora	30	Green, Mr. T. J.	48
Gibbs, Wm.	105	Goodrich, Peter S.	30	Green, Samuel	106
Gibson, Rose	3	Goodrich, Ruth	106	Green, Walter	90
Giddings, Lettie	50	Goodrich, Savay	26	Greenleaf, Frederick Bert	116
Gifford, Chas.	105	Goodwin, Henry French	114	Greenwood, Monroe	98
Gifford, Harriet	105	Goodwin, Howard William	116	Gresham	167
Gifford, R.D.	105	Goodwin, Martha, Chapin	176	Gridley, Carolyn R.	199
Gilbert, Esther	46	Goodwin, Rev. Henry M.	95	Griffin, Clair	182
Gilbert, Maud	29	Goostrey, Ed	6	Griffin, Floyd H.	21
Gilchrist, Edwin J.	199	Goostrey, Mary	6	Griffin, Floyd	78
Gill, Chloe Amanda	33	Gorman, Artilla	21	Griffin, Iva	22
Gill, Mary Jane	277	Gould, Lawrence Peck	115	Griffin, Laura	106
Gillett, B.F.	18, 20	Gould, Lizzie	50	Griffin, Margery	112
Gillett, Chas.	128	Govkuludkowa, Dominika	3	Griffith, S.D.	2
Gillette, Augustus	105	Gradwahl, Elizabeth	71	Grimes, John P.	199
Gillette, Emma	106	Graham, Frank	106	Grindstone Creek	167
Gillette, Eunice	106	Graham, Pearl	106	Grinnell, Joseph	136
Gillette, Hazel	106	Grand Ledge Hotel	2	Grinnell, Maud	50
Gillette, Herbert	106	Grand Ledge Independent	2	Grinnell, Samuel W.	173
Gillette, James	106	Grand Ledge Library	86	Grinnels, Bert	106
Gillette, Mrs. Lodema	106	Grand Ledge	172	Grinnels, Mary	106
Gillette, Ranson F.	106	Grand River City	166	Groesbeck, Ethel	105
Gilman, D. H.	106	Grand River	167	Grohe, Florence	18

1995 Eaton County Quest Index

Grosebeck, Harold	106	Hall, Catherine	7, 15	Hamilton, Hallie	78
Grover, Caroline M.	177	Hall, Chas	106	Hamilton, Jennie	106
Guerine, W.H.	44	Hall, Della	106	Hamilton, Josie	106
Guest, Edgar A.	24	Hall, Ellan	16	Hamilton, Julia	181
Guidotti, Carlo	70	Hall, Hannah, Barrett	7	Hamilton, Lerena	181
Guidotti, Luigina	70	Hall, Hugh M. (Mr. & Mrs.)	9	Hamilton, Levena	181
Guild, June	82	Hall, Hugh Mulholland	8	Hamilton, Mamie	18
Guinnap, Jess	106	Hall, Hugh M.	10	Hamilton, Mildred	111
Guinnap, Maggie	106	Hall, Hugh	106	Hamilton, Selena	181
Guinnap, Pearl	106	Hall, Hugh Mulholland	14, 13, 16	Hamlin	167
Gulic, Reverend J.	81	Hall, J.E.	106	Hamlin, Amos	131
Gunnell, Alice	106	Hall, James	7, 15, 16	Hamlin, Carrie	106
Gunnell, Irving	106	Hall, Jennie A.	106	Hamlin, Cora	106
Gunnell, Mary	106	Hall, Jesse C.	7, 15, 16	Hamlin, Emily	106
Gusey, Lena	27	Hall, Jessie	106	Hamlin, Harry	106
Guthrie, Emma	106	Hall, Jessie Jane Bellows	10	Hamlin, Heber	106
Guthrie, P.K.	106	Hall, John Thomas	10	Hamlin, J.S.	106
		Hall, John T. (Mr. & Mrs.)	9	Hamlin, Marjorie	106
		Hall, John Thomas	11, 14, 16	Hamlin, Mary	119
		Hall, John Thomas	13	Hamlin, Mattie	106
		Hall, John	7, 13, 14, 15	Hamlin, Samuel	167, 172
		Hall, John T.	106	Hamman, Ben	106
		Hall, Marie Alice	14	Hamman, Chas	106
		Hall, Marie Chapin	7	Hamman, Earl	106
		Hall, Mary	15	Hamman, Ellen	106
		Hall, Mary Ella	16	Hamman, Ora	106
		Hall, Maude	106	Hamman, Sarah	106
		Hall, Minnie Loraine	177	Hammond & Wellings	2
		Hall, Mrs. Caroline	106	Hammond, Aria	106
		Hall, Mrs. Wm. A.	106	Hammond, Edward S.	1
		Hall, Mrs. Susan	106	Hammond, Elizabeth	106
		Hall, Nancy Ann	9	Hammond, Guy	106
		Hall, Olive C.	16	Hammond, Harriet	106
		Hall, Robert	7, 15, 16	Hammond, Mary	106
		Hall, Sophia	106	Hammond, May	106
		Hall, Thomas	13, 14, 15	Hammond, Rev. B. A.	106
		Hall, Warren B.	9	Hammond, Sarah (Sally)	143
		Hall, William A.	7, 8, 9, 13, 14, 15, 16	Hampton, Grace	20
		Halladay, M.D.	167	Hance, Miss C.A.	23
		Hallett, Ethel	86	Hance, Will	20
		Halsey, Drouscella	86, 99	Haner, Letitia	106
		Hamel, Eva Lucile	13, 14	Haner, N.A.	106
		Hamel, Louis Cleophas	13, 14	Hannah	192
		Hamel, Peter Franklin	13, 14	Hansen, Martin	106
		Hamilton, Alvin	181	Hansen, Maude	106
		Hamilton, Bertha	19, 23	Harder, Arvilla	106
		Hamilton, Carrie E.	198	Harder, C.E.	106
		Hamilton, Emily	106	Hare, Stella	21
		Hamilton, Floyd	181	Harlon, Albert	106
		Hamilton, H.H.	106	Harlon, Catherine	106
				Harmon, Minnie	29

- H -

Ha?, Dr. W.H.	40
Haas, Harrietta	78
Hackley, J.A. (Mrs)	2
Hackley, John A.	2
Hackstaff, Anna	84
Hageman, Helen E.	199
Haggit, A.J.	2
Haigh, Carson	26
Haigh, Robert	26
Haigh, Robert D.	86
Haines, John	106
Hains, Laura Violet	148
Haite, Clara	106
Haite, Earl	106
Haite, Harry	106
Haite, Lizzie	106
Haite, Seward	106
Hake, Frank	116
Hale, Esther	86
Hale, Ezra	106
Hale, Lotte	18
Hale, Marion	106
Hale, Martha	106
Hale, Pearl	106
Haley, Gaynell	86
Haley, Louis	86
Hall, Alice	13
Hall, Amos	16
Hall, Amos C.	7
Hall, Amos Carson	7
Hall, Andrew Jackson	16
Hall, Bert	106

1995 Eaton County Quest Index

Harmon, Mrs. Eugene	106	Hazelton, Frances Antoinette	177	Herring, Hannah E.	148
Harned, Charley	83	Hazelton, Mary Ella	176	Herring, Hiram Stephen	145
Harned, Ida	83	Heald, Archie Lynn	31	Herring, Julia Anna	145
Harned, Joe	83	Heald, Levi	31	Herring, Milton P.	149
Harned, Noah	83	Heald, Samuel	31	Herring, Samuel	149
Harrington, G. Ion	182	Heald, Wilfred Louis	31	Herring, William Mason	145
Harrington, Russel	182	Heath, Alice	107	Hershiser, Byron	84
Harris, E.S.	106	Heath, Charlie	107	Hershiser, Russell	84
Harris, James	15	Heath, Ella M.	21	Heydenburk, Frank Horace	116
Harris, Lillie	106	Heath, Ella	19	Heydenburk, Isadore Adell	177
Harris, Mary	106	Hecock, Nellie	18	Heydenburk, William Porter	116
Harris, Townsend	171	Heffner, Emma	83	Hice, Bernard	182
Harrison, Mr.	42	Heffner, Homer	83	Hice, Howard	182
Harrison, William H.	43	Heffner, James	83	Hice, Wilbur	182
Harrison, Wm. C.	41	Heilman, Sarah	146	Hickok, Capt. James W.	170
Harrod, Tamara	4	Heimbuchner, Elizabeth	145	Hickok, Frank Sullivan	116
Harshey, Dora	20	Heistand, Ernie	29	Hickox, Zora	109
Hart, Helen	112	Heistand, Jay	29	Hicks, A.J.	107
Hart, Jesse	165, 186	Heistand, Mae	29	Hicks, Benny	107
Hart, May	107	Helicon Band	42	Hicks, Georgiana	107
Hart, Rachel	165	Helms, Cassie	18, 20	Hicks, Harry	107
Hartenberg, Anna	107	Hendee, Artie	107	Hicks, L.B.	107
Hartenbert, Louis	107	Hendee, J.B.	107	Hicks, Linnie	17
Hartness, Jacob VanNess	98	Henderson, Aceneth	146	Hicks, Luella	107
Hartson, C.T.	107	Henderson, John	107	Hicks, Marie	107
Hartson, Lucy Trask	153	Henderson, Mabel	107	Hicks, Wm.	107
Hartsuff, E. Irene	198	Hendrick, Ena	21	Hiett, John D.	145
Hartsuff, Ethel M.	199	Hennings, Dale	86	Hiett, Julia A.	145
Hartwell, Mabel	19	Henrickson, Harriette	86	Higby, P.M.	186
Harvey, Hosey	171	Henry, Allie	107	Higgins, A.J.	107
Haskell, Edwin McGee	116	Henry, Arnold	107	Higgins, Eunice	107
Haslett, J.M.	131, 135, 186	Henry, August	107	Higgins, Merle	107
Haslett, James	132	Henry, Bertha	107	Higgins, Ollie	107
Hatch & Co. H.H.	136	Henry, Braman	19	Higgins, Rufus	107
Hatchell, Gertrude	21	Henry, Charles	107	Higgins, Stella	18, 21
Hatfield, A.H.	107	Henry, Edward	107	Higgins, Willard	107
Hatfield, Freeman	107	Henry, Ellis	107	Higgins, William	107
Hatfield, Rose	107	Henry, Emma	107	Highfill, Ruth D.	86
Haun, Eva	83	Henry, Florence	107	Hildreth, Claude	79
Haun, Florence	182	Henry, Fred	107	Hill, Don	110
Haun, Marian	182	Henry, Jessie	107	Hill, R.J.	111
Haun, Walter	83	Henry, Mary Ellen	107	Hilsinger, Eve Cook	56
Haupt, Andrew	166	Henry, Nellie	107	Hind, Genevieve B.	86
Haviland, Mrs.	47	Henry, Stephen	107	Hitchcock, Charles William	98
Hawley, Isaac	107	Heritage, Rev. J.	50	Hitchcock, Homer O. M.D.	94
Hawley, Zilla	107	Herrick, Carrie T.	107	Hixson, A.	2
Hayden, E.	186	Herrick, Nellie Isadore	176	Hoag, Carrie	107
Haymiller, Elizabeth	146	Herring, Daniel	145, 148	Hoag, Elsie	107
Hayward, Bertha	20	Herring, Daniel B.	149	Hoag, Floyd	107
Hayward, Mabelle	18	Herring, Fred M.	145	Hoag, Truman	107
Haywood, Mabel	23				

1995 Eaton County Quest Index

Hobart, Ruth Imogen	177	Holmes, Rev.	45	Hower, Feronica	146
Hobert, Anna	107	Holmes, Wayne Ira	146	Hower, John H.	146
Hobert, Gertrude	107	Holmes, William Hiram	146	Hoyt, Dr.	168
Hobson, Jane	31	Holzinger, John	98	Hoyt, Dr. Henry	167
Hobson, Margart	143	Homes, Jacob	146	Hoyt, Fred Van Wie	98
Hobson, Stephen	31	Homes, Jennie	107	Hoyt, John T.	171
Hoch, Kate	107	Honeywell, Clara	107	Hoyt, Samuel S.	173
Hoch, Reuben	107	Hooper, Lurana	146	Hoyt's Corner	165
Hockenberry, Hazel E.	110	Hoover, Jacob	18	Hoytville	165, 167
Hodges, Charles Henry	98	Horace, Jerome	2	Hubbard, Helen Caroline	178
Hodges, Clarence	86	Hore, Ben	107	Huber, Chas.	21
Hodges, George	107	Hore, Fannie	107	Huber, Ezra	57
Hodges, Shirley	6, 86	Horn, Arthur	19	Huber, Jay	28
Hoffman, Clara Bell	107	Horn, Barbar Alice	178	Huber Viola Amanda	57
Hoffman, Earl	107	Horn, Willard	112	Huckins, David M.	127
Hoffman, Florence	107	Hornberger, Sophia	21	Hudson, Jennie Elnira	178
Hoffman, George	107	Horner, C. S.	107	Hughes, May	18, 21
Hoffner, Edwin	18	Horner, Cora	107	Hughes, Q. A.	107
Hogettan, J. C.	2	Horner, E.E.	107	Hulett, Carrie	83
Holbrook, Emma	107	Homer, Irene	107	Hulett, Jennie	83
Holbrook, Ernest	107	Homer, Jennie	107	Hulett, Lona	83
Holbrook, Leslie	107	Homer, Merle	107	Hulett, Stella	83
Holcomb, Glenn	57	Homer, Norma	107	Hull, Mrs. Miles	107
Holcomb, Glenn W.	199	Homer, Will	107	Hull, Oselia L.	107
Holcomb, Grace	57	Horniak, Maria	101	Hungerford, C.R.	107
Holcomb, Harvey	57	Hosford, Hon. Oramel	94	Hungerford, Jessie	107
Holcomb, Homer	57	Hosford, Lillie L.	97	Hunsiker, Minnie Cook	178
Holcomb, Homer L.	57	Hosford, Mary H.	97	Hunt, Beatrice	20
Holcomb, Jessie	83	Hosford, O.	113, 118	Hunt, Bernice	107
Holcomb, Julia	89	Hosford, Prof. O.	172	Hunt, C.M.	107
Holcomb, Martha	57	Hosford, Rev. Oramel	95	Hunt, Carrie	107
Holcomb, Mattie	57	Hosford, William	172	Hunt, F.C.	107
Holden, Bertha	111	Hoskins, Hane	86	Hunt, Henry William	98
Holden, Mabel	21	Hosler, Jeanette	107	Hunt, Mina	107
Holden, Mabel F.	198	Hosler, Nettie	50	Hunt, Rosamond Isabella	175
Holden, Stella	109	Hotchkiss, William	95	Hunt, Sarah	107
Holliday, Cornelius	33, 34	Hotchkiss, William H.	113	Hunt, Walter	107
Holliday, Judson	33	Houghton, Miss Josephine	96, 113	Hunter, Frank	107
Holliday, Ula	34	Houghton, Soephine S.	118	Huntington, Arvillia	107
Holliday, Ula	33	Houk, Dr. Ronald	82	Huntington, K.E.	107
Holliday, Wm. Homer	33, 34	How, William	131	Hurd, Hugh M.	155
Holmes, A.S.	23	Howard, D.J.	107	Hurd, Mary	155
Holmes, Alfred L.	18	Howard, Hon. William A.	94	Hurd, Rev. Philo R.	94
Holmes, Aneil	107	Howard, Mary J.	107	Hurlbert, Fred	155
Holmes, Elizabeth ?	57	Howe, Ada	107	Hurlbert, Mary	155
Holmes, Isaac Jacob	146	Howe, Angia Lynde	178	Huston, E. J.	155
Holmes, J. J.	107	Howe, C.A.	107	Huston, Edna	155
Holmes, J.S.	2	Howe, Delia Estelle	98	Hutchens, Miranda	151
Holmes, John D.	146	Howe, James	107	Huxley, Bertha	155
Holmes, Mariette	107	Howell, O.B.	2	Huxley, Edward	155
Holmes, Maude	107			Hyatt, Cleoni	155

1995 Eaton County Quest Index

Hyatt, Cynthia	155
Hyatt, Earl	155
Hyatt, Gertrude	111
Hyatt, Hettie	155
Hyatt, John	155
Hyatt, Marvin	155
Hyde, Bessie	155
Hyde, Dr.	42
Hyde, J.R.	155
Hyde, Laura	155
Hyde, Mary J.	155
Hyde, Oliver A.	165
Hyde, Rufus	50
Hyde's Mills	168
Ingalls, C.W.	2

- I -

Ingersoll, Erastus S.	167
Ingham, Dep. Robert J.	53
Innis, Elizabeth	89
Inselman, K.C.	21
Inwood, Clara Alice	191
Irish & Nostrant	2
Irving, Jessie	18
Irwin, Donald J. Irwin	71
Irwin, Ivory John	71
Irwin, Joann G.	86
Irwin, John Thomas	71
Irwin, Lindsey Hamilton	71
Irwin, Richard Gary	71
Isbell, Laura	155
Isham, Edward	155
Ives, A.J.	186
Ives, Laura Edwina	178

- J -

Jackson, Betty C.	86
Jackson, Cornelius S.	168
Jackson, Mrs. Sarah	155
Jacobs, Ezra	155
Jacobs, Ann	155
Jacobs, Bessie	182
Jacobson, F. Milre	199
Jacokes, Elder	40
Jacox, Ward	155
Jamison, Iva	155
Jamison, Sam'l	155
Jandell, Josephine Maria	176
Jane, Aunt	141
Jarvis, Albert C.	170

Jaw, Thomas	26
Jeffers, Julia	112
Jefferson	168
Jenkins	89
Jenkins, Angeline Campbell	148
Jenkins, D. Wesley	31
Jenkins, Ella Ceceleia	31
Jenkins, Mary	194
Jenks, Alice E.	169
Jenne, Anna S.	155
Jenne, Harry	155
Jenne, I. D.	155
Jenne, Martha E.	155
Jennings, H.K.	48
Jennings, Ira c.	48
Jennings, Miss	48
Jesko, Mike	82
Jewell, Grant W.	141
Jewett, Florence	84
Jochen, Albert	82
Johnson, D.W.	44
Johnson, Elva	17
Johnson, Frank	155
Johnson, Hattie	155
Johnson, Hiram	155
Johnson, J.R.	155
Johnson, Jennie	181
Johnson, Maria	143
Johnson, Mary Norris	89
Johnson, Maud	155
Johnson, Mrs. N.P.	49
Johnson, N.A.	186
Johnson, O.	2
Johnson, Orange	1
Johnson, Orra	155
Johnson, Ruth Catherine	196
Johnson, Truman	2
Johnson, Verna B.	198
Johnson, William	128
Johnston, Ed.	155
Johnston, Ruth	155
Jonas, Dianne G.	86
Jones, Bradford	200
Jones, Charles	200
Jones, Edith	110
Jones, Ellen	155
Jones, F.A.	2
Jones, G. Homer	2
Jones, G.C.	141
Jones, Julia Ann	200

Jones, Mrs. J.W.	155
Jones, Peter	155
Jones, Simeon	200
Jones, Whitney	166
Jopp, Nancy	155
Josyle, Levi	20
Joslyn, Geoge	155
Jourden, Nancy	99
Jourden, Nancy K.	86
Jowett, Anna	155
Jowett, Johnson	155
Joy, Rev. H.M.	40
Judd, Sylvester	73
Judson, Mable	21

- K -

Kafer, Emma A.	71
Kafer, George J.	71
Kalamo	168
Kaleel, Sloma	101
Kammerzell, Henry	145
Kammerzell, Jacob	145
Kammerzell, Josephine A.	145
Kammerzell, Peter	145
Kassick, L.	118
Kauffman, Fannie	112
Kauffman, P.	135
Kauffman, Ralph	110
Kayler, Edna	155
Kayler, Monroe	155
Keeler, Bertie	155
Keeler, Robt	155
Keich, Nellie	19
Kelley, Elwood	112
Kelley, Marie	111
Kellog, Sarah	155
Kellogg, Bradford	147
Kellogg, Giles	147
Kellogg, John B.	147
Kellogg, Lorina	147
Kellogg, Sarah Ann	147
Kelly	168
Kelly, Chritian	143
Kelly, Cornelius	116
Kelly, Hortense	194
Kelly, Jessie M.	155
Kelly, Sarah	155
Kelly, Sarah Anna	143
Kelly, T.P.	155
Kelly, Thomas H.	155
Kemler, Adam	155

1995 Eaton County Quest Index

Kemler, Claude	155	Klaasen, Annie	145	Lamont, Eleanor	194
Kemler, Don	155	Klaiss, Leila	86	Lamson, E.S.	12
Kemler, Leda	155	Klann, Carl A.	110	Lamson, Edmund	1
Kemler, Ruth	155	Knapp, Andres	128	Lamson, Edmund L.	172
Kenrick, Harold	155	Knapp, Bertha	18	Lamson, Mrs.	172
Kenrick, L.M.	155	Knapp, C.D.	155	Landa, James	155
Kenrick, Nellie	155	Knapp, Carrie	17	Landers, Leila Dell	178
Kent, Hixson & Co.	2	Knapp, Charles	155	Landon, Armeda	18
Kent, P.M.	1	Knapp, Clara	155	Lane, Daniel	13
Kern, Julaine	86	Knapp, Dora	20	Lane, Lucy	155
Kesler, A.H.	186	Knapp, Dorris	155	Lane, Lura	111
Kester, Mary Louisa	178	Knapp, E.F.	155	Lane, M.E.	155
Keyes, Geo W.	94	Knapp, Emma	155	Lanc, Mary	31
Killeen, Carolyn M.	86	Knapp, Harry	155	Lane, Mary Campbell	89, 148
Kilmer, Albert	83	Knapp, Hattie	155	Lane, Myrde	181
Kilmer, John	83	Knapp, Hazel	111	Lane, R.E.	194
Kilpatrick, William	166	Knapp, J.F.	155	Lane, Ruby	21
Kimball, John H.	132	Knapp, M.J.	155	LaPoint, Albert	155
Kimes, John	155	Knapp, Ross	155	LaPoint, Julia	155
Kimmell, Ursula	18	Knapp, Sarah J.	155	Lathrop, Alice Evelyn	178
Kimmer, Lida	182	Knauch, Dora	145	Lathrop, Seth Dwight	114
King, Bernice	155	Knight, Benjamin	172	Laton, Japhet	128
King, Charlotte	72	Knowles, Alberta	196	Lavery, Lena Margaret	196
King, Edna	111	Knowlton, Adelaide	155	Lavery, J.D.	2
King, Frank	83	Knowlton, Arthur	155	Law, Nellie	43
King, Hamilton	97	Knowlton, Berniece	155	Lawrence, Adams	130
King, John W.	126	Koos, Yvonne L.	86	Lawrence Albert	172
King, Lucille	72	Krause, Arloa	72	Lawrence, H.I.	171
King, Mrs. Belle T.	155	Krause, Ernest	72	Lawrence, M.	19
King, Pearl F.	199	Krause, Mr.	72	Lawrence, Mattie	23
King, Rachel	110	Krause, Mrs. E.	72	Lawson, Edith	72
King, Royal H.	126	Krause, Mrs. Ernest	72	Lawson, Ernest	72
Kingman, Riley	26	Krugton, Catherine	13, 14	Lawson, Herbert	72
Kingsbury, E.M.	131	Kuhns, Madge	86	Lawson, Marjorie	72
Kingsland	168	Kyes, Lucy	155	Lawson, Max	72
Kingsley, Alice May	144			Lawson, Mrs Max	72
Kingsley, Alvin	144			Lawson, Mrs. Herbert	72
Kingsley, Charles Shipman	115			Lawson, Mrs. Ernest	72
Kinne, Oliver	126			Leach, Margaret	156
Kinney, Nettie	29			Leach, Martin	168
Kinnie, Harrie	30			Leap, Charles R.	86
Kinsman, Cecile	111			Lease, Charles	156
Kint, Margie	155			Lease, Donald	156
Kint, Mrs. Lilly	155			Lease, Fannie	156
Kinyon, Henry Eugene	116			Lease, John	156
Kiper, Amelia A.	155			Lease, Julia	156
Kiplinger, Robert	86			Lease, Rebecca	156
Kirkpatrick, Thomas	116			Lee, Eloise	156
Kisna, Frank Wesley	115			Lee, Florence	156
Kisor, Lloyd	182			Lee, Harry	156
Kitchen, William Charles	114			Lee, Hattie Sophia	178

1995 Eaton County Quest Index

Lee, Rev. L. O.	93	Livingston, Josephine	156	Mahan, Ella	156
Lee, Rev. Geo. d.	48	Loba, Victor John	97	Mahan, Odin	127
LeFever, Beth	255	Locke, Beverly	86	Maier, Ida	19
LeFever, G. E.	155	Lockwood, Clare	156	Malerna, Mrs. A.R.	156
Leggitt, Ben	156	Lockwood, Elma	156	Maltby, F.E.	18
Leggitt, Catherine	156	Lockwood, James	156	Manly, Lily May	178
Leighton, Emma	156	Lohr, Edna	112	Mann, James	126
Leighton, F.S.	156	Long, Addie	156	Manning, Barbara A.	21
Leisenring, Jimmie	23	Long, D.H.	156	Mapes, Clara	156
Leisenring, Lewis W.	50	Long, Ernie	83	Mapes, Earl	156
Leiter & Kauffman	135	Long, Fannie	83, 156	Maple, Mrs. A.C.	156
Leiter, Clara Elizabeth	176	Long, Fred	156	Markham, Anna	22
Lerter, F.E.	135	Long, Sarah M.	23	Markham, Lucius C.	114
Lembeck, Florence A.	24, 86	Loomis, DeWitt I.	166	Marple, A.C.	156
Lennon, Anna Mae	112	Loomis, Ethel	181	Marple, G.M.	156
Lennon, Edith	78	Loomis, Fred	182	Marple, Glenn D.	199
Lennon, Nellie	78	Loomis, J. Hatch	164	Marple, Marguerite	111
Lenon, Edith M.	21	Loomis, John W.	165	Marple, Nellie	156
Lents, Emma	27	Loomis, M.F.	141	Marple, Stella	156
Leonard, Frank	156	Loomis, Minnie	20	Marr, Jay	72
Leonard, James	156	Loomis, Silas P.	164	Marr, Mary Lou	72
Leonard, Victoria C.	21	Lord, David G.	86	Marr, Mrs. Jay	72
Lepard, Irene	199	Loree, Alice	156	Marsh, Alice	23
Letts, Grover	156	Loree, Charles	156	Marsh, Gary	27
Letts, Ruby E.	156	Loring, A.T.	186	Marsh, Watson	156
Lewis, Chas.	156	Loring, T.W.	133, 134	Marshall, Claud	19
Lewis, Delaney	156	Love, Elsie	182	Marshall, Ellen	157
Lewis, Emma Cornelia	175	Love, Rev. W. D.	94	Marshall, Grace	156
Lewis, F.M.	2	Loveland, Harold V.	110	Marshall, Hazel	157
Lewis, Flora Ruth	176	Lowe, Cora L.	196	Marshall, L.C.	157
Lewis, Geo., A.	2	Lute, Jessie	27	Marshall, Wm.	157
Lewis, Mabel	29	Lute, Myrna	18	Martin, Lizzie	157
Lewis, Raymond	29	Lute, Myrna	21	Marvin, Henry M.	116
Lewis, Ruby E.	110	Luthy, John Speck	114	Mason	124
Liepart, Boyd	49	Lyman, H.B.	156	Mason, George	157
Liepins, Joyce	51	Lynn, Sarah	18, 20	Mason, H.	172
Lincoln, Luther	171	Lyon, Anna Eliza	178	Mason, J.T.	21
Lincoln, Mrs. G.H.	156	Lyon, Edward Frank	116	Mason, John T.	19
Lindhorst, Bertha	156	Lyon, Rev. T.	132	Mason, Principal	77
Lindhorst, Christ	156	Lyon, William L.	130, 136	Mason, Thos.	21
Lindley, Martha	156			Mason, Tillie	157
Lindsey, Frank	156			Mather, Helen Belle	178
Lindsey, Anna	156			Mathews, Lena	157
Lindsey, Chas.	156			Mathias, Wm.	157
Lindsey, Eula	156			Mathison, Will	18
Lindsey, Helen	156			Matthews, Leola	111
Lindsley, Get.	128			Mattice, Emma	18
Link, Ada	27			Mattison, Gertie	84
Link, Willie	27			Maupin, Hall	157
Linsey, George	156			Maupin, J.E.	157
Livingston, Arch	156			Maupin, Kenneth	157

1995 Eaton County Quest Index

Maupin, Theo	157	McDonald, Sheriff Allen A.	53	Merritt, Gardie	157
May, Geo S.	90	McDougal, Sarah	156	Merritt, Gertrude	157
May, Mabele	22	McDougal, Silas	156	Merritt, Maggie	157
May, Robert D.	89	McDowd, James	141	Merritt, Maude	157
Maynard, Director H.S.	50	McEwen, Ida	83	Merritt, Roy	157
Maynard, H.S.	50	McEwen, Maud	83	Mest, Harry	157
Maynard, Horace	110	McFarland, Ann	156	Metcalf, Mary	16
Maynard, Vera W.	110	McGee, Seth	22	Mick, Sandra	86
McArthur, Ira, Sr.	156	McGibbon, Wm.	2	Mikesell, Addie	78
McAlister, Helen	21	McGowan, Hon. J. H.	93	Mikesell, Howard	110
McAllister, Cynthia	90	McGrath, Frank	112	Milbourne, Anna	157
McAllister, Wm.	156	McGregor, Cora	22	Milbourne, Belle	157
McAllister, Catherine	156	McKenney, Francis W.	110	Milbourne, Clark	157
McAllister, Eli	90	McLaughlin, Lee	109	Milbourne, Curtis	157
McAllister, Eva	156	McManus, Henry	156	Milbourne, D.S.	157
McAllister, J.A.	156	McNeil, Belle	178	Milbourne, Eliza J.	157
McAllister, Levi	90	McPeck & Simpson	2	Milbourne, Elmer	157
McAllister, Mrs. Mary T.	156	McPeck, Jacob L.	1	Milbourne, Fannie	157
McAllister, Oscar	156	McPeck, R. Roy	78	Milbourne, H.J.	157
McAllister, York	156	McRoberts, Mildren	112	Milbourne, Harry	157
McArthur, Betsey	156	McSmith, R.	44	Milbourne, John J.	157
McArthur, G.E.	156	McUmbler, Iva J.	196	Milbourne, Mabel	157
McArthur, Ira, Jr.	156	McUmbler, Mary Hazel	199	Miller, Gladys Burns	149
McArthur, Laura	156	Meade, Lulu	157	Millard, Cyrus	181
McArthur, May	156	Meade, W.R.	157	Millard, Fanny Lucinda	178
McCall, Alexander	191	Meads, Carl F.	164	Millard, Graham	181
McCall, Alice Josephine	191	Melisse, Maria	70	Millard, Lewie	181
McCall, William Henry	191	Mellon, Cyde	157	Millard, Lewis	181
McCarthy, Rosemary	86	Mellon, Mertie	157	Millard, Ollie	181
McCarty, Rev.	167	Mellon, Sue	157	Millard, Ova	181
McClear, Anna	156	Melon, Alice	157	Millbourn, Vaughn	198
McClear, Wm.	156	Melon, Chas	157	Millenbacher, Eva Marie	199
McClintic, Will	83	Mendell, Ed	157	Miller, Addie	50
McClintock, Rena	17	Mendell, Effie	157	Miller, Alice	157
McClure, Edna E.	23	Mendell, Fred	157	Miller, Amos	157
McClure, Hettie L.	23	Mendell, Lillian	157	Miller, Andrea	87
McConnell, Addie	20	Mendell, Stanley	157	Miller, Anna	157
McConnell, Gordon	83	Meon, Harriett	157	Miller, Bertha A.	20
McConnell, James	83	Meon, Harry	157	Miller, Bird	157
McConnell, Myron	156	Mercer, Charles	44	Miller, Conrad	157
McConnell, Nellie B.	83	Mercer, Harry	44	Miller, Curtice	157
McConnell, Nina	112	Merrick, F.E.	19	Miller, D.G.	157
McCormick, Ella	17	Merrick, Florence	78	Miller, E. L.	157
McCormick, Sally Ann	143	Merrick, Marie	108	Miller, Ella	157
McCotter, Eliza	175	Merrick, Mueriel	79	Miller, Frank	157
McCrindle, Margaret	33, 34	Merrit, Mary	157	Miller, Genevieve	111
McCringle, John	34	Merritt, Alexander	168	Miller, George	157
McCrary, Jennie	19	Merritt, C.A.	186	Miller, Georgiana	157
McCullough, Maggie	156	Merritt, Chas. E.	157	Miller, Glenna J.	86
McCullough, Thomas	156	Merritt, Fed	157	Miller, Gorden	157
McCumber, Grace	27	Merritt, Fern	17	Miller, Hazel	157

1995 Eaton County Quest Index

Miller, Hazel	157	Monroe, Frank	157	Mowrey, Addie	23
Miller, Heilaman	157	Montgomery, Albert	49	Mud Creek	169
Miller, Herbert	157	Montgomery, Belle	157	Mudgett, Susanna	148
Miller, Huldah	157	Montgomery, Clifford	157	Mulford, Kate M.	21
Miller, Isane	157	Montgomery, Colonel John	167	Mulhollan, Hugh	7
Miller, Jacob	157	Montgomery, Ella	157	Mulhollan, Mary B. Hall	7, 15
Miller, Jessie	157	Montgomery, John	168	Mulholland, Charley	83
Miller, John	157	Montgomery, Mrs. Albert	49	Mulholland, Martin	83
Miller, L. E.	157	Montgomery, O.J.	157	Mulliken	172
Miller, Lois	157	Montgomery Plains	168	Mulliken, Mr.	172
Miller, Loren	157	Montgomery, Stewart	95	Mulliken Public Library	87
Miller, M. Louise	18	Moon, Hazel	82	Mundle, Rose	3
Miller, M. Irene?	23	Moore, Altha J.	71	Munger, Duray	79
Miller, Malinda	157	Moore, C.J.	157	Munn, Lena	21
Miller, Margaret	157	Moore, Ernest	157	Munn, Scott	158
Miller, Marilla	157	Moore, Franklin	94	Munroe, Lottie	18
Miller, Marion	157	Moore, Grace	157	Munson, A.H.	186
Miller, Mary	157	Moore, Hary J.	87	Munson, Amos	151
Miller, Mary L.	20	Moore, Lena	157	Munson, Susan L.	133
Miller, Minnie	157	Moore, Mira	18, 23	Murdick, Bertie	30
Miller, Nellie	157	Moore's	169	Murdick, Burt	29
Miller, Norton	157	Morell, LeGrand	78	Murdick, Everett	30
Miller, O. L.	22	Moreno, Fernando A.	145	Murphy, F.Q.	158
Miller, P.E.	157	Moreno, Margueretta A.	145	Murphy, Genevieve	158
Miller, Ray	157	Morey, Edward W.	87	Murray, Bernice	28
Miller, Rhca	157	Morey, Ethel	111	Murray, Margery	111
Miller, Saml.	157	Morey, Fred	108	Murry, Abigail June	70
Miller, Verna	157	Morey, Helens Naomi	33, 34	Musgrave & Haslett	135
Millett	168	Morey, John Orr	33, 34	Musgrave, J.	186
Millett, S.E.	168	Morey, Orrin	33, 34	Myers, Elfa	78
Millett, Silas E.	165	Morgan, Edna	19	Myers, Emma	158
Millett, Silas	133	Morgan, Inez, M.H.	21	Myers, George	26, 158
Mills, Miss H.E.	23	Morrell	169	Myers, Maria	50
Mingus, Marion	157	Morrell, LeGrand	22	Mygrant, Bessie	110
Mingus, Thomas	157	Morrice, Emma Viola	178		
Minnie, Edith	157	Morrice, Lily Frances	178	- N -	
Minnie, H.C.	157	Morrill, Jennie C.	178	Nadell, Henrietta	158
Mitchel, Floyd	19	Morris, Alta	157	Naracon, Rosa	158
Mitchell, Addie	178	Morris, Frank	157	Narcon, James	158
Mitchell, Ann	157	Morrison, Edward	157	Nash, Edwin	19, 22
Mitchell, Gertrude	78	Morrison, Fred	158	Nash, Steven	158
Mitchell, Mary	178	Morrison, Irma	158	Near, John Lawrence KReva	182
Mitchell, Robt.	157	Morrison, Jennie	19	Nebre, Ila David	116
Mix, Carrie	157	Morse, George Cooley	97	Needmore	169
Mix, E.F.	157	Morse, Lovica	30	Neetrib, Clyde	29
Moe, Ezra	164	Moseley, Clara Lydia	176	Nelson, B. Glendora	22
Moe, Henry	164	Mosher, Kittie D.	141	Nelson, Glenna	18
Moe, Peter	164	Moss, L.W.	2	Nelson, Minnie Eliza	178
Moffit, Charles	165	Mott, Sheila	87	Newark, Iva	111
Monkhouse, Mr. M.H.	40	Mottram	124	Newcomer, Harold Fay	199
Monkhouse, Mrs. M.H.	40	Moulton, H.J. Jr.	158	Newland, Ida Huldah	175

1995 Eaton County Quest Index

Newland, Martha Helen	175
Newman, Albert	158
Newman, Emma	258
Nichols, Alice	158
Nichols, Barbara	6
Nichols, D.W.	158
Nichols, George	158
Nichols, J.H.	165
Nichols, Jason	165
Nichols, Martin	165
Nichols, Mary	158
Nickle, Andres	169
Nickle, Andrew	21
Nielsen	4
Niles, Irving Page	97
Nisbett, A.W.	158
Nisbett, Ida	158
Nixon, James	165
Nixon, Robert	165
Nixon, Samuel	165
Noble, George B.	158
Nobles, Jedediah	144
Nobles, Lois Etta	144
Norman, Lottie	141
Norris, Betsey	89
Norris, Hannah Elizateth	89
Norris, Mary Ann	89
Norris, Robert	89
Norris, Saphronia T.	158
Norris, Sarah Jane	89
Norris, William	89
Norstraub, Joseph	167
Northrop, Harriet B.	118
Northrop, Mrs. Harriet B.	96
Norton, Ellsworth C.	199
Norton, George W.	158
Norton, Joseph Frank	98
Norton, Nina	30
Novis, Mary E.	158
Novis, Robt	158
Noys & Bros.	2
Nulf, Adam	71
Nulf, Albert Adam	71
Nulf, Perry Adam	71
Numbers, Harriet	158
Nuperger, S.S.	2

- O -

O'Brien, Annie E.	158
O'Brien, Wm	158
O'Connor, Elsie H	198

O'Neil, Edward	49
O'Neil, James	186
Oakes, Jessie Femont	178
Oberlin College	172
Ogden, Anthony	33, 34
Ogden, Florence A.	33, 34
Ohneiser, Theresia	4
Olds, Harry	53
Olds, Luke	53
Oliver & Co.	2
Olivet	172
Olivet College	92
Olmstead, H.B.	158
Olney, Miss Veda	158
Olney, Mrs. E.A.	158
Oneida	169
Orr, Maud	23
Orr, Maude	18
Osborn, F.A.	158
Osborn, Harry E.	196
Osborn, Milo O.	199
Otis, Clark Chester	98
Otis, Rev. J. T.	45
Otte, Ruth M.	198
Otiney, Nunietta E.	110
Otto, Grace	158
Otto, Lawrence	110
Otto, Leva	158
Otto, Wm	158
Overfield, E.E.	158
Overfield, Madline	158
Oviatt, E.C.	44
Owen, Dolly Sabina	175
Owen, F.W.	131
Owen, Frank	158
Owen, Lilly	158
Owen, Nora	158
Owen, Wm	158
Oxendale, Isaac	143
Oxendale, Jane (Jennie)	143
Oxendale, John	143
Ozanich	3

- P -

Pack, Herbert Eugene	98
Packard, Jr. O.E.	112
Packard, Louise	109
Paddock, George Evan	114
Pagel, Bill	58
Paine, Ella D.	17, 22
Palmer, Belle Love	176

Palmer, C.L.	158
Palmer, Marvin Jabez	116
Palmer, Pearl	158
Palmiter, Mamie	18
Pancoast, Harry	83
Parish	151
Parker, Bob	82
Parker, Charlotte	109
Parker, Donald H.	197
Parker, F.H.	158
Parker, Maria	158
Parkhurst, John D.	186
Parks, Alice	158
Parks, Charles	158
Parks, Dorthula	31
Parks, James	158
Parson, Nancy Etta	175
Parsons, Clark Dandforth	97
Parsons, George Frederick	98
Parsons, P.	118
Parsons, Philo	94
Parsons, Willis Edwards	98
Passage, Alice Jane	178
Patterson, Marguerite L.	198
Patton, Rev. James	94
Payne, Bessie	141
Peabody, Nathan	18
Pearl & Stork	2
Pearl, Ella	175
Pearl, Emma	175
Pearsall, Eliza	151
Pearson, Jean	4
Peck, Chas. E.	158
Peck, Ernest	19
Peck, F.A.	17
Peck, Ida M.	158
Peck, Sarah Margaret	196
Peckham, Leroy Bliss	98
Pemalie, Perry H.	22
Pember, Anna	158
Pember, Don	158
Peniman, E.J.	130
Pennington, Iva M.	110
Perkey, Belle	83
Perkey, Paul	83
Perkins, E.J.	158
Perkins, Nettie	158
Perrine, C.M.	41
Perrine, Catharin Cooper	46
Perrine, Charles	35
Perrine, Clara	39

1995 Eaton County Quest Index

Perrine, D.W.	41	Phillips, Mertie	158	Polhemus, Edith	109
Perrine, David W.	36	Phillips, Nettie	22	Polk, R. L.	1
Perrine, David	35	Phillips, Otis Warren	146	Pollard, Gene	158
Perrine, Deacon Charles	35	Phillips, W. T.	44	Pollard, Gertrude	158
Perrine, Dr.	39	Phillips, Winthrop Barnard	116	Pollard, James G.	4
Perrine, Dr. Wm. H.	38	Philpot, Mary	147	Pollard, James	4
Perrine, Florence	39	Phipps, William M.	136	Pollard, Laura	158
Perrine, Geo. C.	126	Picciche, Ancio	3	Pollard, Lillian	158
Perrine, George	37	Picciche, Mary	3	Pollard, Lucion	158
Perrine, Henry	46	Pickell, Clarence	78	Pollard, Samuel Worcester	114
Perrine, Jane C.	37	Pickett, Louise	158	Pollard, William	158
Perrine, Josephine M.	47, 48	Pickett, Warren	158	Polley, Anna Catherine nee	
Perrine, Lura	39	Pickup, Doris	3	Polley, Daniel	44
Perrine, Madelon B.	50	Pierce, Charles	28	Pollock, Gladys	198
Perrine, Madge	44	Pierce, Jane E.	158	Pollock, Penny	91
Perrine, Myrtle	42	Pierce, Ralph	28	Pomeroy, Margaret Vivian	101
Perrine, Rev. W.H.	37	Pierson, Charlie	84	Pope, Elberta	21
Perrine, Schuyler	128	Pierson, Rev. Arthur T.	94	Pople, Jean	4
Perrine, Sol, C.	43, 44	Pjyl, Dierwertje E.	3	Popoff, Tamara	4
Perrine, Sol, C. Mrs.	43	Piller, Rose	3	Porter, Deborah	144
Perrine, Stevens	47	Pilmore, John	3	Porter, Edna	158
Perry, Georgia	78	Pilmore, William	3	Porter, H.L.	118
Perry, James	158	Pinch, Anna	158	Porter, Hannah L.	118
Perry, Jennie	158	Pinch, Benjamin William	98	Porter, Ida	158
Peters, Bernice Louise	196	Pinch, J.O.	158	Porter, John	158
Peters, Vine	194	Pinch, Jane Estella	178	Porter, S.	158
Peters, W.A.	45	Pinch, May Angia	178	Poslter, Theresia	4
Peterson, Ed	158	Pinnock, Joseph	111	Post, Henry	158
Petire, Miss Susie	158	Piper, C.J.	137	Post, Ida	158
Petreville	169	Piper, Wm.	134	Post, Roy	158
Petrie, Mrs. Pearl	158	Pitcher, Florence	198	Potter, Alma	181
Petson, Gertrude	158	Pixley, Eva	22	Potter, Clifford	112
Pettit, George Eli	3	Pixley, Margaret	158	Potter, Geo. N.	132
Pettit, Harold	158	Pixley, T.	130, 186	Potter, Geo. N.	130
Pettit, Marie	158	Pixley's Hotel	130	Potter, George N.	173
Pettit, Naomi	3	Plag, August H.	3	Potter, Linus	173
Phelps, Alice May	178	Plas, Auguste	3	Potter, Solomon	4
Phelps, R.D.	173	Plese, Anton	3	Potter, Theodore E.	172
Phelps, Samantha	90	Plese, Ruth	3	Potterville	173
Phillip, Charles	158	Plese, Veronika	3	Poulos, George John	4
Phillip, Edith	158	Ploof, Francis	126	Powell, Lewis M.	43
Phillip, Elmer	158	Plotikow, Filomen	3	Powell, Lovina	43
Phillip, George W.	158	Plotnick, Dominika	3	Powell, Rachel	4
Phillips, Anna	158	Plotnick, Pantelemon	3, 4	Powell, Sarah Ann	142
Phillips, Elisha	146	Plotnick, Phillip	3, 4	Power, Everett	79
Phillips, George E.	158	Plotnikow, Fiolmen	4	Powers, M. Della	22
Phillips, Girtie	17	Polgor, Elizabeth	4	Pratt, Lewis	158
Phillips, Gurtrude	21	Polgor, Henry	4	Pratt, Lydia	158
Phillips, J. W.	158	Polgor, John	4	Pratt, Wellington	4
Phillips, Lillian M.	3	Polgor, Joseph	4	Pray, Andrew	143
Phillips, Mary Munettia	146	Polgor, Margarete	4	Pray, C.E.	23

1995 Eaton County Quest Index

Pray, Esek 143
 Pray, Joseph Andrew 143
 Pray, Marion Elsie 143
 Pray, Nathan Hammond 143
 Prentic, John Tyler 116
 Prentice, Caroline Mason 176
 Prestanizzi, Domenica 4, 5
 Preston, Adelina 4
 Preston, Annie A. 50
 Preston, Domenico 5
 Preston, Domenico 4
 Preston, Dorothy 4
 Preston, Elvira 4
 Preston, Eva 4
 Preston, Gina 4
 Preston, Joe 4
 Preston, Joe 4, 5
 Preston, Lucy 5
 Preston, Samuel 169
 Preston, Sarah Rebekah 176
 Preston, Victor 5
 Pretruzzi, Domenico 4, 5
 Prince, Ida Mae 196
 Pritchard, Golden 5
 Proctor, Abel C. 5
 Proctor, Thomas 5
 Prosser, Georgia 158
 Prosser, S.C. 158
 Prosser, Thomas 5
 Puffenberger, Barbara Green 99
 Puffenberger, Barbara 87, 88, 142
 Puffenberger, Ellen 142
 Puffenberger, Fred Clyde 142
 Puffenberger, Fred 53
 Puffenberger, Henry 53, 142, 158
 Puffenberger, Jacob 142
 Puffenberger, Jud 53
 Puffenberger, Mary 53, 158
 Puffenberger, Wm. 158
 Puffenburger, Frank 83
 Puffenburger, Fred 83
 Puffenburger, Jennie 83
 Puffenburger, Judson 83
 Puffenburger, Minnie 83
 Purtell, Beverly J. 87
 Purvis, Edward 5
 Putnam, John 159
 Pye, Clarice Evelyn 5
 Pye, Rachel 4, 100

Pye, Vera 5
 Pye, William Henry 5
 Pynchon, Col 73

- Q -

Quackenbush, E.J. 20, 21
 Quantrell, Charles 5
 Quantrell, George 83
 Quantrell, William 5, 151
 Quathochi, Rosario 5
 Quick, J. E. 44
 Quinn, Joseph D. 5

- R -

Raber, Alois 59
 Radn, Pauline Anna 59
 Radee, Valerie 87
 Rager, Abner R. 91
 Rager, Anna Clarissa 91
 Rager, Bartlet 58, 91
 Rager, Jacob 91
 Rager, John Buyon 91
 Rager, Mary 91
 Rager, Michael 91
 Rager, Morris 91
 Rager, Salinda 91
 Rager, Samuel P. 58, 91
 Raidle, Amy 28
 Raidle, Charles 28
 Raidle, Levi 19, 28
 Railer, Betsey (Bessie) 143
 Railer, Lena 159
 Railer, Michel 143
 Railer, R.M. 159
 Rall, Hattie 20
 Ramer, Jay 159
 Ramsey, Bessie 159
 Ramsey, Dell 159
 Ramsey, Eldora 159
 Ramsey, Hazel 159
 Ramsey, John 159
 Ramsey, L.W. 159
 Ramsey, Theresa 159
 Rand, G.T. 134, 186
 Randall, Harnet 89
 Randall, John 159
 Randell, Bert 159
 Randell, Bessie 159
 Randell, Lottie 159
 Randolph, Ella Fitz 178

Rank, Ada 159
 Rank, Carrie 159
 Rank, Edward 159
 Rank, Elton 159
 Rank, Frank 159
 Rapman, H. 2
 Rasmusen, Albert Marinus 59
 Rasmusen, Anna 59
 Rasmusen, Edward 59
 Rasmussen, Klaudiane S. 59
 Rasmussen, Niels Peter 59
 Raszso, Steve 60
 Rathbun, Bertha 159
 Rathbun, Brace 159
 Rathbun, Jane 159
 Rathbun, Louis 159
 Rathbun, Mabel 159
 Rathbun, Mary 159
 Rathie, Margaret 31
 Rattos, Demetreos J. 59
 Ratynska, Lucena 59
 Rawson, Horace 31
 Rawson, Susan Lucinda 31
 Ray, J.H. 137
 Raymer, Addie 159
 Raymer, Alice 159
 Raymer, Clyde 159
 Raymer, Floyd 159
 Raymer, Jennie 159
 Raymer, John 159
 Raymer, Mamie 159
 Raymer, Margaret 159
 Raymer, Ned 159
 Raymer, Ralph 159
 Raymer, Vera 159
 Raymond, Asa B. 43
 Raymond, Margaret 23
 Reynolds, Bertha A. 22
 Raynor, Annette Elizabeth 178
 Raynor, Edson 116
 Razso, Arzella 59
 Razso, Gizella 59
 Razso, Helen 60
 Ream, Myrton 21
 Reardon, Belle 60
 Reardon, William 60
 Reason, Laura 159
 Reasoner, Cora Anna 178
 Reasoner, Lee 84
 Reece, Bion 159
 Reed, Belle Vesta 178

1995 Eaton County Quest Index

Reed, Carlo	172	Rider, S.V.	2	Rogers, Joan	87
Reed, Emily	143	Riggs, Chauncey Wales	117	Rogers, John	62
Reed, F.I.	94	Riley, John	61	Rogers, LaGrand	159
Reed, Fitz L.	94	Riley, Nancy Mary	89	Rogers, Mabel A.	199
Reed, Hattie A.	97	Riley, Thomas T.	61	Rogers, Maxwell D.	117
Reed, Henry E.	60	Ripley, Floyd	181	Rogers, N.S.	159
Reed, James	60	Ripley, Vernie	181	Rogers, Nellie	159
Reed, Mary Amelia	175	Ripper, Friederike Dorothea	61	Rogers, Olive Bangham	62
Reed, Rev. Dr.	40	Rix, Robert	61	Rogers, Ona	159
Reed, Samuel Marks	114	Roberts, Angeline	151	Rogers, Pearl	110
Reese, Mrs. Electa	159	Roberts, Daniel Clark	117	Rogers, Pearl	111
Reeve, Edward	60	Roberts, James W.	61	Rogers, Rebecca	159
Reeves, Amelia	159	Roberts, Signa Evelyn	61	Rogers, S.D.	182
Rehfuss, Fanny Beatrice	60	Roberts, Thomas	61	Rogers, William	62
Rehfuss, William F.	198	Robertson, Anna	159	Rogers, Wm	22
Reid, Mary	178	Robertson, Sidney	159	Rohrig, Martin	62
Reill, William P.	136	Robins, Henry	61	Roll, Adolf	62
Reisdorph, Georgia	78	Robinsin, John C.	61	Roll, Anna	62
Reisner, Paul	60	Robinson, Charles	61	Roll, Arthur	62
Reitsma, Albertine Therese	60	Robinson, Emma	23	Roll, Charles	62
Remar, Assajr	60	Robinson, Ernest Ellsworth	61	Roll, Geraldine	62
Remar, Robert	60	Robinson, Floyd	159	Roll, Hattie	22
Remar, Theodore	60	Robinson, Genevieve	159	Roll, John	62
Remar, Wanda	60	Robinson, H.	186	Roll, Lawrence	62
Rendziperis, Chris Nickolas	60	Robinson, Henry	186	Roll, Nellie	20, 23
Rendziperis, Louis	60	Roblin, Clarence	61	Rolle, Velta	62
Renlund, John	60	Rochester, Carl A.	199	Roller, Thomas R.	134
Resseguie	2	Rodgers, Emil E.	141	Rolls, R.C.	159
Rew, Grace	159	Rodman, Dora	159	Rolls, Richard C.	62
Reynolds, Clara E.	159	Rodney, Robert	72	Rolls, Rose	62, 159
Reynolds, Emma	159	Roe, Steven L.	128	Romeo, Frank	62
Reynolds, George	159	Roelandt, Elisa Maria	61	Romig, Walter	164
Reynolds, H.F.	159	Roger, Pierce F.	115	Roose, Emeric	62
Reynolds, O.	2	Rogers, Albert W.	119	Root, Belle	159
Reynolds, Phoebe M.	159	Rogers, Beatrice	182	Root, Bertha	62
Reynolds, R.H.	159	Rogers, Bernard W. J.	61	Root, Cora	159
Rhead, Robt.	159	Rogers, Bessie	159	Root, Edgar Andrew	62
Rhines, James	44	Rogers, Bethel	182	Root, Julius	159
Rhoads, Linda	87	Rogers, Clark	182	Root, LaVerne	87
Rice, Ella	22	Rogers, Cynthia	178	Root, Orla	159
Rice, Frank	159	Rogers, David	159	Roraback, Linda	141
Rice, James W.	60	Rogers, Earl	159	Rorabeck, Cora	159
Rice, Mary	159	Rogers, Edith	159	Rorabeck, Henry Peter	200
Rice, Sada S.	119	Rogers, Fannie	159	Rorabeck, Scott	159
Rice, Zella Alice	61	Rogers, Floyd	182	Rose, Amanda	159
Richard, W.E.	21	Rogers, Guy	159	Rose, B.H.	2
Richard, Will	18	Rogers, Harold Henry	62	Rose, Bryce Everett	62
Richards, Klara Maria	61	Rogers, Harold Henry	62	Rose, Ellen Mar	62
Richards, Nelson Mark	116	Rogers, Helen	18	Rose, G.A.	159
Richardson, Hon. David M.	94	Rogers, Henry	159	Rose, Henry	100
Ridd, John	61	Rogers, James	159	Rose, John	100

1995 Eaton County Quest Index

Rose, Mary	159
Rosenbloom, Morris	100
Rosewall, Charles G.	100
Rosmussen, Niels Peter	100
Rossini, Giovannina	70
Rouse, Audrey	6
Rouse, Bill	6
Rouse, Edith Maud	100
Rouse, Glen	100
Rouse, Glenn George	100
Rouse, Howard Clinton	100
Rouse, Minnie	50
Rowan, Isabelle	100
Rowan, James Henry	100
Rowan, Mary Agnes	100
Rowan, Sarah Louis	100
Rowan, Thomas Arthur	100
Rowell, Rachel	100
Rowland, Orrin	169
Rowles, Albert	100
Rowley, Agnes	112
Rowley, Hattie	110
Rowley, Mark	110
Roxana	169
Roxand	169
Royston, Della	159
Royston, Grover	159
Rudesill, Carl J.	196
Rudesill, Clark	110
Rue, Bess	109
Rulison, Capitola	159
Rulison, Juila Ann	89
Rulison, Lawrence	89
Rulison, Robt.	159
Rundle, Gurtrude B.	21
Rural Directory of E.C.	63
Rushton, Maggie	159
Rushton, Marion	159
Ruskowsky, August	159
Ruskowsky, Ginta	159
Russel, John H.	136
Russel's Boot & Shoe	136
Russell	4
Russell, E.	159
Russell, Edmund	2
Russell, Edward	100
Russell, George	159
Russell, John W.	1
Russell, Katie	159
Russell, Margaret Vivian	101
Russell, Myrtle	159
Russell, Solomon	169
Russell, Vina	159
Russell, William	1
Rustard, Johannes Jr.	101
Ryan, Elmore D.	127
Rybnikar, Charlie	101
Rybnikar, Francis	101
Rybnikar, Helen	101
Rybniker, Joe Dominik	101
Rybniker, Leone	101
Rybniker, Mary	101
Rybniker, Rose	101
- S -	
S//ons/, John F. S.	23
Sabbe, Camilla	101
Sabbe, Jonnas	101
Sabbe, Jonns	101
Sach, Louis	101
Sachau, Rev. Larry	82
Sackett, Lena Margaret	199
Sackett, Susie R.	22
Sacks,	145
Sacks, Anna Elizabeth	145
Saffady, Saloma Kaleel	101
Sage, Ethel	159
Sage, Paul	159
Sampson, A.B.	131, 133
Sandolanck, E.B.	159
Sanford, Geo. F.	40
Satterley, Maud	182
Satterley, Ora	182
Satterley, Oren	182
Satterley, Roy	182
Satterly, Bertha M.	110
Satterly, Donald W.	198
Sattler, Jessie	78
Saub, Mary	101
Saub, Sam	101
Saunders, J.	186
Saurers, Sarah	159
Savage, Dorothy	159
Savage, Emma Louis	178
Savage, Leila May	178
Savage, S.P.	159
Sawyer, Claude R.	110
Sayers, John H.	101
Sayers, Keziah	159
Saylor, Mary A.	145
Schaffler, Antal	102
Schaffer, Antone	102
Schiller, Gladys	111
Schilz, Bertha Ellen	102
Schilz, Charles Simeon	102
Schilz, Edward A.	102
Schilz, Frank L.	102
Schilz, Gordon B.	102
Schilz, Howard P.	102
Schilz, Maud Helen	102
Schilz, Peter	102
Schinker, Victor Rudolph	102
Schlak, Edward	102
Schlak, Naomi	102
Schmidle, Charles	102
Schmidt, Emil Herman	102
Schmind, Joseph Leone	102
Schmuck, Henry	146
Schmuck, Leah	146
Schneider, Catherine	146
Schoenenburger, Arnold	102
Schoenenburger, Lena	102
Schrader, Ida	23
Schreck, Ella Heald	31
Schreck, Mary	87, 89, 148
Schreck, William Henry	31
Schriver, Rebecca	193
Schwied, John	159
Schwied, Louise	159
Scienski, Walter Albert	102
Scott, A.N.	159
Scott, Adam	102
Scott, Archibald	102
Scott, Bertha	181
Scott, C.I.	2
Scott, Delia	159
Scott, Elizabeth Pearl	102
Scott, George	102
Scott, Helen Marie	199
Scott, I.E.	159
Scott, J.H.	23
Scott, J.P.	159
Scott, Merton	181
Scott, Thomas	103
Scott, Viola	159
Serecs, Gaber	103
Scribner, S.E.	2
Scripps, J.E.	1
Scripter, Ernest	159
Scripter, Euphenia	159
Scripter, Mary	159
Scripter, R.W.	159
Scripter, Samuel	159

1995 Eaton County Quest Index

Sdunek, Ottelia	194, 197	Secore, Harry	181	Shepher, E.	186
Seagraves, John F.	18	Secore, Herma	181	Shepherd, Ezra Eugene	191
Scarals, Denison P.	152	Secore, Mary	181	Shepherd, Clara Elsie	191
Searfoss, Ella	160	Sedore, Janice D.	87	Shepherd, E. & J.	132
Searfoss, John	160	Seeley, Freddie	42	Shepherd, Edward H.	198
Searle, John	152	Seeley, Lillie	42	Shepherd, Hiram	170
Searle, Wallman	103	Seelye, Alice	160	Shepherd, Jas.	186
Searles, Anna B.	152	Seelye, George	160	Shepherd, Leroy	186
Searles, Florence	152	Seelye, J.M.	160	Shepherd's Corners	170
Searles, John	152	Seelye, Lena A.	160	Sherman, Emma	28
Searles, Jonathan	152, 171	Seelye, Roxie A.	160	Sherman, Minnie	28
Searles, Kenneth	152	Seelye, Sally	160	Sherman, Wm.	160
Searles, Samuel	152	Seelye, Wm.	160	Sherwood, S.C.	186
Searles, Tamen M.	152	Segar, Chas.	160	Shields, Lou Lou	18
Searles, Wealthy A.	151	Segar, Genevieve	160	Shields, LuLu	22
Searles, Zelotus	152	Segar, Grace	160	Shillito, Sarah	160
Searls, Araminta	152	Segar, Marie	160	Shimmins, Jack (Mr. & Mrs.)	9
Searls, Florence W.	152	Segar, Nellie	160	Shingler, Marie S.	199
Searls, George	151	Selleck, Clare	87	Shipherd, Rev. John	172
Searls, Grace	151, 152	Selleck, Reta	87	Shirk, M	160
Searls, Henry	151	Seres, Gabor	103	Shotwell, Benjamin	144
Searls, Jesse	152	Session, Martha Grace	178	Shotwell, Bernice	112
Searls, John	151, 152	Sessions, Edwin David	115	Shotwell, Lydia M.	144
Searls, Jonathan	151	Sessions, May	175	Shoup, Edgar	160
Searls, Maria Angeline	152	Sexton, Weston Miles	98	Shoup, Edith	160
Searls, Mary	151, 152	Shalliar, Minnie Adelia	178	Shoup, Lucy	160
Searls, Mary E.	152	Shaver, Bessie M.	198	Shoup, Nelson	160
Searls, Nancy	152	Shaw, B.E.	160	Shrader, Bernard	182
Searls, Phebe E.	152	Shaw, D.	186	Shrader, Maxine	182
Searls, Phoebe	152	Shaw, Edward	160	Shufelt, Daniel	160
Searls, Samuel Sr.	151	Shaw, Henry A.	132	Shufelt, Eva	160
Searls, Samuel	151, 152	Shaw, Jennie	22	Shufelt, Marie	160
Searls, Sarah (Sade)	152	Shaw, Mildred	160	Shuler, Max	78
Searls, Sarah "Sally"	151	Shaw, Mr.	186	Shumaker, Bert	28
Searls, Susan	151	Shaw, Victor	160	Shumaker, John	28
Searls, Wealthy A.	152	Shaytown	170	Shumaker, Ralph	28
Searls, William A.	152	Sheeney, C.	44	Shumway, Franklin Goodling	
Searls, William	151	Sheets, A.G.	160		117
Searls, Zelotas B.	151	Sheets, Alden	29	Shumway, Parley P.	170
Searls, Zeloty B.	152	Sheets, Charity	160	Shuts, Donald	160
Sears, Homer A.	199	Sheets, Dora	160	Sibra, E.L.	160
Sears, Wesley	43	Shehan, G///? M.	23	Sickle, Earl D.	22
Sebesten, Elizabeth	103	Sheldon, J.W.	160	Sidnah, R. Jean	87
Sebesten, Febien	103	Sheldon, Lois	160	Sidnam, Albert Rollin	144
Sebastian, Elisabet Bitres	103	Sheley, Hon. Alanson	94	Sidnam, Caleb W.	144
Sebastian, Fabian	103	Shepard, Daniel F.	143	Sidnam, Clyde, albert	144
Sebastian, Fabian	103	Shepard, George Henry	143	Sidnam, Issac	144
Sebastian, Fred	103	Shepard, John	143	Sidnam, Philo Albert	144
Sebastian, Julius Anthony	103	Shepard, Leone Brown	6	Sidwell, Iva	83
Sebestiny, Samuel	103	Shepard, Orson Luman	115	Simmons, Arthur	160
Secore, George	181	Shepard, Vera Elsie	143	Simmons, Emmer Rollin	144

1995 Eaton County Quest Index

Simmons, Ethel	160	Smith, Hattie	160	Soule, Pearl	160
Simmons, John Andrus	144	Smith, J. E.	49	Soule, Rolland	160
Simmons, Mae	160	Smith, Jill	87	South Eaton	170
Simmons, W. L.	160	Smith, Jonathan	2	Southwick, Mabel	22
Simmons, William Taylor	144	Smith, Joseph J.	102	Southworth, Allen	147
Simon, Bertha	22	Smith, L.J.	160	Southworth, Majone	87
Simpson, Krystal	87	Smith, LaRae	87	Southworth, William	167, 186
Skinner, John	160	Smith, Letitia	181	Spafford, Chas. D.	27
Skinner, Lina M.	20	Smith, Lillian Josephine	3	Spafford, G. D.	27
Skinner, Melvina J.	160	Smith, Lizzie	160	Spafford, May	22
Slaght, Frank	160	Smith, Lucile E.	110	Spafford, Res	27
Slaght, Nettie	160	Smith, Lucile	110	Spafford, Rex	27, 78
Slates, Lydia	160	Smith, Marie	160	Spaulding, Anna	200
Slaughter, J.W.	20	Smith, Mary Antoinette	178	Spaulding, Catherine a.	200
Slaughter, Myrtle C.	198	Smith, Max	160	Spaulding, Henry	200
Slayton, Adelaide	160	Smith, May	160	Spaulding, Jerome	200
Slayton, F.J.	160	Smith, Mr. J.E.	46, 49	Spaulding, Julia	109
Slayton, Frank	160	Smith, Mrs. R.	160	Spaulding, Luella	110
Slee, Rev. W.W.	160	Smith, Mrs. J. E.	46, 49	Spaulding, Miles	161
Slee, Tillie	160	Smith, Mrs. J.F.	2	Spaulding, Minerva	161
Slentz, Henry	160	Smith, Nellie	110	Speer, Ellen	161
Slentz, Jesse	160	Smith, Nora Blanche	45	Speer, Elwin	161
Slentz, Mary	160	Smith, Norah B.	49	Speer, Homer	161
Sloan, Bradley	171	Smith, Norval	83	Speer, Scott	161
Sloan, Elizabeth	111	Smith, Phyliss	200	Spencer, Edward	161
Sloan, Thomas J.	170	Smith, Phyllis	87	Spencer, George H.	185
Slocum, Lida	160	Smith, Rena	49	Spencer, Mrs.	36
Slout, Emma	27	Smith, Rev. J. Morgan	94	Spicer, Amos	172
Slout, Henry	27	Smith, Rev. Moses	94	Spicer, Charles	161
Slout, Lewis	27	Smith, Robert T.	87	Spicer, Clay	161
Slout, Nettie	27	Smith, Rose	160	Spicer, Etta	161
Small, Inez	160	Smith, Stephen	87	Spicer, Pierpont E.	172
Small, Janet Lindley	87	Smith, Walter	110	Spicer, Sarah	161
Small, Warner	160	Smith, William	160	Spier, Emma Jane	178
Smith, Abram	1	Smith, Willis	160	Spier, Silas Benjamin	97
Smith, Adelaide	23	Smrcek, Pauline Anna	59	Spirnkle, Bertha	161
Smith, Agnes	160	Snell, Clifford W.	110	Spitler, Dean S.	199
Smith, Albert	160	Snell, Ida	109, 194	Sponable, Vera	112
Smith, Allie	87	Snow, J.W.	160	Spooner, Alice Maria	178
Smith, Barb	87	Snow, Lena	28	Spooner, Elizabeth A.	178
Smith, Bob	90	Snow, Lois	87	Spotts, Floyd	28
Smith, C.D.	160	Snow, Mary	160	Spotts, Roy	28
Smith, C.E.	160	Snow, Wm.	160	Sprague, Clare	161
Smith, Carl	160	Snyder, Harriet	22	Sprague, Effie	161
Smith, Clarence	160	Snyder, Chester	160	Sprague, H.C.	161
Smith, Dora	78	Snyder, Della	160	Sprague, Lida	161
Smith, Eugene W.	22	Snyder, George	160	Sprague, Ruby	111
Smith, Eva J.	46	Snyder, Lynn	194	Sprague, Sylvia J.	161
Smith, Fronia	160	Solomon, Abe	160	Springkle, Mrs. Amos	137
Smith, Gertrude	160	Soule, E.	160	Springle, Jennie	161
Smith, H.W.	160	Soule, Effie	160	Sprinkle, Amos	137

1995 Eaton County Quest Index

Sprinkle, Bertha	21	Stone, Rosamond Hotchkiss	175	Sweet, Harriet Elizabeth	179
Sprinkle, Cyde	161	Stoner, Erle	21	Sweet, John	161
Sprinkle, Louisa	161	Stoner, Eyrle	18	Sweet, Laura	161
St. Clair, Robert	127	Storei, George R.	31	Swift, Fred	22
Stall, T.A.	161	Storie, Mary Elizabeth	31	Swindt, George Lewis	98
Stamm, Mona	112	Storie, Robert	31	Switzer, Henry	15
Stanton & Tiffany	130	Storke, H.L.	118	Syes, Sam'l	155
Stanton, Mrs. S.	2	Storke, Helen L.	118	Sypes, Harry	161
Stanton's Exchange	130	Storke, Isabella J.	118	Sypes, Ida	161
Starks, Olive Jane	146	Storke, Miss Isabella J.	96, 113	Szucs, Lajo	101
Starkweather, Blanche	97	Storke, Miss Helen L.	96, 113		
Starkweather, Fred Eugene	98	Storr, Albertus Ely	117	- T -	
Stealy, Clair L.	110	Storr, Floyd	84	Tabor, Abby Cornelia	175
Stealy, Loren D.	196	Storr, Roy	84	Tabor, Ida Belle	179
Stealy, Vera M.	110	Stoughton, Lt. Governor	73	Taggart, Charles Ernest	114
Steel, Dore/Dora	19	Stowell, J.	161	Taggart, Fred Carlton	117
Steers, Sarah Anna	143	Stowell, Rhomine	127	Taggart, Mary Ida	179
Steffy, Henry	161	Strank, Alice	161	Talbert, Mabel	23
Steffy, Prudence	161	Strank, Carol M.	89	Taylor, C.C.P.	35
Stella L. Heath	141	Strank, Eugene	161	Taylor, D.	2
Stem, Earl E.	198	Strank, George	161	Taylor, Edwin	1
Sterns, Alta	22	Strank, Thera	161	Taylor, Hazel E.	198
Steven, Fred W. Mrs.	44	Strasel, Beulah	112	Taylor, Ida Scott	50
Stevens, Ethel	181	Strayer, R.H.	161	Taylor, Josiah	47
Stevens, Eva Dell	178	Stringham, Clifford	161	Taylor, Mrs. B.T.	2
Stevens, Frederick W.	47	Stringham, Grace	161	Teachout, John	2
Stevens, H.G.	132	Strong, Frank	161	Teman, Alice	18
Stevens, Howard	141	Strong, Mary	161	Terpning, George	161
Stevens, Nellie	141	Strong, N.A.	161	Terpning, Ona	161
Stevens, Otto S.	141	Strong, Paulina	161	Terry, Ida	161
Stevens, Stanley	181	Strong, Rhoda	161	Terry, Reha	161
Stevenson, J.R.	50	Strong, Susie	161	Terry, W.H.	161
Stevick, Susan	7	Strother, Carrie	109	Thoenen, Charles John	115
Stevick, Susan	7	Strother, Charles F.	185	Thomas, Blanchard, John	114
Stewart, Bessie	161	Stroud, Ada	161	Thomas, Florence	197
Stimson, C.A.	161	Stroud, M.P.	161	Thomas, Lessie	29
Stirling & Brothers	134	Stuart, Emaline	161	Thomas, Lillie	29, 30
Stirling, David	43	Stuart, Fred	161	Thomas, Lossie	30
Stirling, Helen	161	Stuart, Hattie	161	Thomas, Rebecca Ann	147
Stirling, J.W.	161	Stuart, John	161	Thompson, A.J.	161
Stirling, Mary	161	Stump, F.M.	161	Thompson, Ada Semira	176
Stirling, Orra	161	Stump, Lena	18	Thompson, Alice	161
Stirling, W.F.	50	Stump, Maggie	161	Thompson, Anna	161
Stoddard, Floss	161	Sturdevant, Minnie	23	Thompson, Beatrice	182
Stoddard, Owen	161	Sumerix, Mrs. E.	161	Thompson, Glenn S.	198
Stokoe, Carolyn A.	87, 147	Sunfield	173	Thompson, John	161
Stone, Anna	161	Sutherland, Louis Larue	98	Thompson, Mary	161
Stone, E.N.	50	Sutherland, William Hobby	117	Thompson, Selden	161
Stone, H.A.	161	Swank, Howard	161	Thomson, Bernice	182
Stone, Josephine Adella	179	Swarthout, Alice	6	Thornton, Charles	112
Stone, Mary Cynthia	179	Sweet, H.E.	23	Thornton, Roy c.	199

1995 Eaton County Quest Index

Thorp, Minnie	17, 20	Tremaine, Louise	110	Van Kleek, Mabel R.	194
Thuma, Angeline	161	Trench, Henry A.	130, 172	Van Meter, William Ira	13, 14
Thuma, Sharlene	73, 88	Trieber, Minnie	18	Van Meter, Annetta	13, 14
Tiech, Hayes	19	Trimble, Maaria	161	Van Wingerden, Maggie D13, 14	
Tillson, Coe C.	22	Troutner, Lela	110	VanAllen, D.D.	162
Tilly, Catherine	14	Trowbridge, Frank	27	VanAllen, Emma	162
Tilly, Catherine Arment	15	True, Fannie	161	VanAllen, Forest	162
Tingley, Allen	161	True, T.B.	161	VanAtken, Alice B.	21
Tingley, Bertha	16	Tubbs, Edna	110	VanAuken, Alice	20
Tingley, Charles	161	Tubbs, Glenna	110	VanAuken, Floyd	162
Tingley, Elmer	161	Tubbs, Nelson	27	VanAuken, Grace	162
Tingley, Henry	161	Tucker, Clara	161	VanAuken, Luther	162
Tingley, Leonard	161	Tucker, George	161	VanAuken, Mark	88
Tingley, Maggie	161	Tucker, Leone	161	VanAuken, Rev. H.H.	50
Tingley, May	161	Tucker, Ruth	161	Vance, Wm. A.	22
Tingley, Rebecca	161	Tunison, Abram M.	115	VanDearing	44
Tingley, Wm	161	Tupper, Esther	72	Vanderhoof, Ethel	112
Tison, Alexander	97	Turner, Claude Edwin	148	VanDeusen, E.H.	162
Titus, William Sanford	98	Turner, Ida	17	VanDeusen, Ida	162
Todd, Gertrude	197	Turner, Keith	182	VanDeusen, James	162
Tolbert, Howard Otis	199	Turner, Marie Leone	148	VanDeusen, May	162
Tomlinson, Brenda	88	Turner, T.	130	VanDriss, Rev. L.	49
Tooker, Randal I.	88	Turner, Wm.	161	VanDusen, Alma	162
Tooley, Jay B.	72	Turner, Zella	161	VanDyke, Henry	88
Tooley, Jay	72	Tuter, Harold	162	Vane, Clarence Rollie	117
Tooley, Ollie	72	Twitchell, Helen R.	88	VanElls, Mark D.	55
Topliff, Carrie	161	Tyler	170	Vangelson, Alice	179
Topliff, Homer	161	Tyler, Edith	27	VanGorden, Florence	162
Topping, Alice Fidelia	175	Tyler, L.L.	20	VanGorden, Wm.	162
Topping, Ellen Effie	176			VanHom, Elnora	79
Topping, Ford	88			VanNostrand, Anna Grace	179
Topping, Laura	88			VanShoten, George	162
Topping, Mary	97			VanSickle, Roy	181
Towe, Edna	182			Vanstella, Jacob	162
Tower, Louise	110			Vanstella, Lennett	162
Tower, Newton Esbon	117			Vanstella, Marine	162
Tower, Phebe E.	22			Vanstella, Mrs. L.	162
Towne, Mary	179			Vanstella, Susie	162
Towns, Arlo	161			VanVleet, Lynn	194
Towns, Eunice	161			VanVleet, Vera V.	197
Towns, Eva	161			VanWagoner, Roy	162
Towns, Noah	161			Vanzile, Hon. P.T.	93
Towns, Vern	161			Verney, Mary Ella	179
Townsen, Lemuel	91			Verplanck, A.	2
Townsen, Mary E.	91			Verplank, David	170
Tracy, Eugene	161			Vickery, A.D.	83
Tracy, Mary	161			Vickery, Arthur	19
Tracy, William	161			Vickery, Bert	83
Trask, Mrs. William S.	153			Vickery, Charles	83
Trask, W.S. Capt.	124			Vickery, Lillie	83
Trask, William S.	122, 153			Vickery, Maudie	83

- U -

Uhl, Grace	198
Umbarger, Frank	57
Umbarger, James	57
Umbarger, Martha	57
Umprey, Catherine	162
Umprey, E.C.	162
Updegraff, Catherine	7
Upright, Annie	30
Upright, Eddie	30
Upright, F.C.	162
Upright, George	29, 30
Upright, Mary	162
Upright, Willard	30
Upson, Luther	83
Upton, Addie R.	176
Upton, Sherman	114

- V -

Valentine, Mary	33, 34
---------------------------	--------

1995 Eaton County Quest Index

Vomberg, Arthur	298	Ward, May	162	Wells, Cora	162
Vomberg, Ralph	112, 194	Warn, Carrie	27	Wells, Daniel	162
Vorce, Clara	162	Warner, Minnie D.	23	Wells, Eugene	162
Vorce, Edna	162	Warren, A.K.	94	Wells, Frank	20
Vorce, Roy	162	Warren, B.W.	186	Wells, Franklin P.	168
- W -		Warren, Edward	97	Wells, Ida	17, 22, 23
Wack, Fred	83	Warren, Francis C.	198	Wells, John	23, 162
Wack, Harvey	83	Warren, Henry Kimball	114	Wells, May	162
Wade, Willie	84	Warren, Hon. ASA K.	94	Wells, Will	83
Wagner, Anna	162	Warren, Jeff	88	Wentworth, Elsie	162
Wagner, Charles	162	Warren, Lina C.	22	Wesener, August Charles	117
Wagner, J. L.	17, 19, 20, 22, 23	Warren, Luella	67	West Benton	170
Wagner, J.I.	182	Warren, Mary	111	West, Hallet	162
Wagner, Seena	162	Warren, Rev. Leroy	93	West, Nora	182
Wagner, W.D.	162	Waters, J.W.	42	West Windsor	170
Wagonlander, Elsie	141	Waterson, Pearl	84	Westervelt, Mrs. G.C.	49
Wait, Nora Emma	191	Watson, Ada May	179	Weston & Co.	2
Waite, LaVerne	18	Watson, Doris	3	Wheat, Abbie	49
Waite, Lulu	182	Watt, Lydia	31	Wheaton, Howard	111
Waite, Mable	182	Watter, Henry	127	Wheaton, Ida	22
Wakley, Elizabeth Elvira	191	Way, P///?	23	Wheaton, Jennie	22
Waldo, Mort A.	110	Weaver, Ella	17, 22	Wheaton, Mary	17, 22
Waldo, Ralph Emerson	115	Weaver, G.B.M.	30	Wheaton, Myrle	182
Waldon, Ellen	34	Weaver, Lulu	162	Wheaton, Willis	22
Waldrige, Mrs.	162	Webber, Clifford	162	Wheeler, Adele	162
Waldron, Andrew	162	Webber, F.B.	162	Wheeler, D.D.	162
Waldron, Ellen	33	Webber, Hazel	162	Wheeler, Fern	111
Waldron, Samuel S.	33	Webber, James	162	Wheeler, Frank	111
Walker, Alice	162	Webber, May	162	Wheeler, I.J.	162
Walker, Carrie	30	Webber, S.P.	186	Wheeler, Mary	162
Walker, Clara	30	Webber, Saml.	162	Wheeler, Nelson W.	162
Wallace, Benjamin	142	Webster, Gertrude	162	Wheeler, R.E.	162
Wallace, William	142	Webster, H.P.	162	Wheeler, R.R.	44
Walldord, Prudence	144	Webster, Sarah J.	162	Wheeler, Safty	162
Walldorf, George	144	Webster, Wm.	162	Wheeler, Sarah	162
Walter, Adaline	162	Weed, H.	168	Whelpley, Iva May	22
Walter, Charles	162	Weed, N.	168	Whipp, Charles E.	162
Walter, Daniel	162	Weeks, Arlie	84	Whipp, Donald V.	162
Walter, David	162	Weeks, Lura	199	Whipp, Frances	162
Walter, Fern P.	198	Welch, Agnes E.	17	Whitbeck, John Elmore	115
Walter, Hattie	162	Weld, Walter, M.	44	Whitcomb, Bess Orella	196
Walter, Mary	162	Well, Henry	162	White, Aaron	131
Waltersdorf, Eva	109	Well, Nicholas	162	White, Anna	162
Walton	170	Well, Ruth	162	White, Charles A.	131
Walton, Mary	162	Wellbrook, Anna Catherine	176	White, Hiram S.	162
Walton, Ray	162	Weller, Maria	179	White, Jean M.	88, 89
Walton, Rev. Mr.	41	Wellington, F.	44	Whitehead, Belle	162
Walworth, Geo.	50	Wellivere, Lillian	88	Whitehead, Earl M.	162
Walworth, Victor H.	88	Wellman, W.T.	2	Whitehead, Lucinda A.	35
Ward, Bert	162	Wells, Chas	162	Whitehead, T.C.	162
		Wells, Clark Eugene	115	Whitehead, T.Cleopatra	162

1995 Eaton County Quest Index

Whiting, J.L.	130	Wilson, Lewis	162	Woodruff, Belle	163
Whitman, Gertrude	162	Wilson, Mrs. W.W.	162	Woodruff, Charles	163
Whitney, Louie Elwyn	117	Wilson, Phoebe	162	Woodruff, E.F.	163
Whittaker, George	83	Wilson, Sarah	162	Woodruff, Ivan	163
Whittaker, Howard	83	Wilton, Barbara T.	163	Woodruff, J.A.	18
Whittaker, W.H.	44	Wilton, George	163	Woodruff, Lynn	163
Widger, Frank	162	Wilton, Harold H.	196	Woodruff, Minnie	163
Widger, Maude	162	Wilton, Oletah	163	Woodruff, Orpha	163
Wigent, Horatio	30	Wilton, Orvie	111	Woodruff, Phoebe	163
Wigent, Lucy	30	Wilton, Ray	163	Woodruff, Wm.	163
Wigent, M.R.L.	30	Wing, Frank Joseph	115	Woods, James	57
Wigent, Mary	29, 30	Winn, Celia	163	Woods, Lizzie Sherman	57
Wigent, Ratio	29	Winnie, James	2	Woods, Mary	57
Wilber, Chas	162	Winslow, Maud	163	Woods, Mrs. Mary	57
Wilber, Edith	162	Winters, Florence	163	Woods, Rachel	57
Wilcox, Anna	162	Wisconsin	87	Woods, Ralph R. ?	57
Wilcox, Ella Wheeler	50	Wiseman, Effie	163	Woods, Roxanna	57
Wilcox, Horace W.	194	Wiseman, Wm.	163	Woods, Wallace C.	57
Wilcox, Mrs. Mary	162	Wisner, C.D.	163	Woodward, Millard Fillmore	98
Wildern, Frank	198	Wisner, Frank	111	Woodworth, Gertrude D.	198
Will, Alma Lucia	70	Wisner, Harriet	163	Woodworth, Hannah	30
Will, Carlo	70	Witheral, Nancy	163	Woodworth, Harry D.	110
Will, Stefano	70	Witheral, Wells	163	Woodworth, Ida	30
Willett	147	Wonsey, Lucille	6	Woodworth Mrs. Esther	72
Williams, A.R.	171	Wood, Addie Iora	179	Woodworth, Phebe	30
Williams, Carrie M.	17, 22	Wood, Amelia	163	Worden, Minnie	163
Williams, Crystal	82	Wood, Cora	163	Worden, Rev. Albert D.	163
Williams, Delila Matilda	192	Wood, Edward	163	Wright, Ada	27
Williams, Earl	109	Wood, Effie Rosella	179	Wright, Augusta Lucene	199
Williams, Ebenezer	192	Wood, Emma	163	Wright, Barbara J.	88
Williams, Edith Burr	175	Wood, Gertrude R.	110	Wright, Elson	83
Williams, Evander I.	88	Wood, J.F.	23	Wright, Jennie	27
Williams, Harvey	I, 130, 166	Wood, Jacob	163	Wright, Myron	43
Williams, Howard	79	Wood, Job	163	Wright, Nathan	83
Williams, Issac	166	Wood, John	163	Wyant, Allie	163
Williams, Jas.	162	Wood, Maurice L.	198	Wyant, R.M.	163
Williams, Joan	88	Wood, Max	198	Wyble, Edward	18
Williams, Orton	166	Wood, Otis ? M.	22	Wyble, Verle	111
Williams, Rev. Wolcott B.	94	Wood, R.	2	Wyman, Milton	163
Williams, Sarah Nelson	175	Wood, R.D.	163	Wyman, Phoebe	163
Williams, Stephen W.	73	Wood, Reuben	1		
Williams, Viola	162	Wood, Robt.	163		
Williams, Wolcott B.	186	Woodard, Bernice	111		
Willis, Chole	28	Woodbury, J.P.	171		
Willis, Julia Anna	179	Woodbury, Myra	109		
Willis, Nathan	27	Woodbury, Pearl M.	17		
Wilmer Atkinson Co.	63	Wooden, Lillian	23		
Wilmore, Joan	88	Woodin, O.	132, 136		
Wilson, Celeste A.	199	Woodman, Hattie	163		
Wilson, George Wesley	98	Woodman, Winnifred	194		
Wilson, Lena	162	Woodmansee, G.G.	132		

1995 Eaton County Quest Index

Youngs, Mrs. Agnes 163

- Z -

Zimmerman, B. 19

Zimmerman?, Bessie 23