

Eaton County Genealogical Society

Located in the 1885 Eaton County Historical Courthouse

100 W. Lawrence Ave., P.O. Box 337, Charlotte, MI 48813-0337

[Members]



Would you like to share your family history? Would you like to place a query in our newsletter? Perhaps someone who reads our newsletter may know something about your ancestors!

Submit your information to P.O. Box mailing address above, or email to ecgsnews@gmail.com.

2016 April Calendar

No Writing Group meeting for April. We plan to resume on the 2nd Saturday in May 2016!

Wed Apr 20 5:30pm—7pm: Social Hour (Feel free to bring sack supper.)

Wed Apr 20 6pm: Genealogy Tips-Tricks presentation by Shirley Hodges

Wed Apr 20 7:00pm: General Meeting

Sat Apr 23th 10am—2pm: Open for research.

Every Tuesday Afternoon:

Probate Packet Scanning (any time during 12-5)

2016 Calendar

Monthly Meetings:

Wed Mar 16 General Meeting
 Wed Apr 20 General Meeting
 Wed May 18 General Meeting
 Wed Jun 15 General Meeting
 Wed Jul 20 General Meeting
 Wed Aug 17 General Meeting
 Wed Sep 21 General Meeting
 Wed Oct 19 General Meeting
 Wed Nov 9 General Meeting

Regular Projects:

Each Tuesday noon—5pm:
 Probate Packet Scanning

Officers Jan 1, 2016 through Dec 31, 2016

President	Chuck Chamberlain
Past-President	Bill Haines
Vice President	Kent MacDonald
Treasurer	Sher Brown
Recording Secretary	Jan Shepler
Membership Secretary	Dianna Emerson
Corresponding Secretary	Marcy Cousino
Librarian	Sharlene Thuma
Web Maintenance	Sherry Copenhaver
Publicity	Joy Black
Computer Chair	John Evans

CONTACT US

Phone: 517-543-8792

Email: ecgsnews@gmail.com

Open Room Hours: Tues-Thurs 10am-2pm

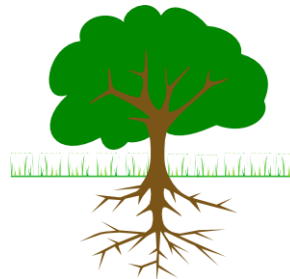
Officer & Committee Reports

Membership: Dianna Emerson

I have some wonderful old postcards beginning with the early 1900s. My husband's maternal grandmother lived in Lansing and she received dozens of postcards from folks and relatives in Eaton County. Some are humorous. Others have delightful birthday and holiday designs. I will bring the albums in during social time prior to a Wednesday evening ECGS meeting. I am glad these postcards were passed down through the generations.

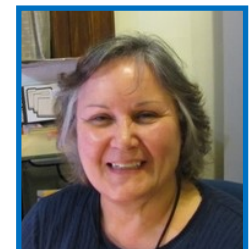
New Members:

Denise L Ochsner
Martha & Paul Andriekus
Sabrina Casler
Gretchen & John Forsyth
Mary A Ackerman



See our [Membership](#) page for 2016 membership dues and on-line application.

Welcome New Members!

Librarian: Sharlene Thuma

Judy Chamberlain- allowed us to photocopy the **GAUT** family Bible records, 3 pp.

John Mann- *The Civil War Tokens Issuers of Eaton Rapids, Michigan* article; taken from the newsletter *The Junk Box*, vol.2, issue 1, March 2016.

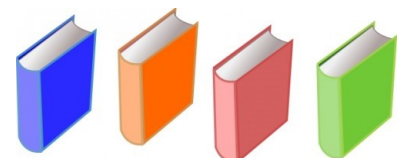
Sherry Copenhaver- *Michigan Historic Cemeteries Preservation Guide* book, by Gregg G. King, published 2004, 211 pp.

Mary Jean Baker- 1947 Charlotte High School, Charhian yearbook.

Barbara Dobberfuhr- 9 reproduced photos of McLaughlin School (exterior of the building & the students), surnames: **KELLY, DAVIS, PRIESMAN, BLODGET, GOODRICH, TANNER, LOVELAND**; 3 reproduced photos of Wheaton School (class groups), surnames: **LOVELAND, DICKSON, WALKER, HUTCHINGS, CARTER, LUNIPP, TOWE/LOWE, HENNINGS**, etc.; also includes photocopies of photos, news articles, Frank W. **LOVELAND** ancestor chart sent electronically.

Arvin Butterfield- 1901 Charlotte High School, Delphian yearbook; Charlotte Sanitarium book.

A big thank you to all who donated!



Officer & Committee Reports

Treasurer: Sher Brown

\$3,146.99 Checking Account - Monthly
\$2,214.81 Snack Fund Account - Qtrly
\$3,220.78 Undesignated Donations - Qtrly
\$4,474.64 CD - Annually - Renewed in September

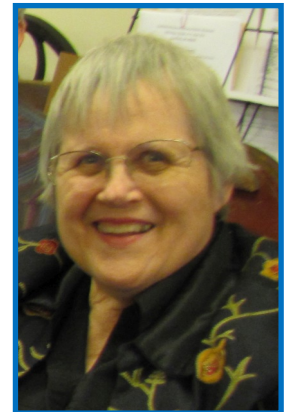


Coming up for

The April ECGS Meeting

Shirley Hodges will be our speaker for the April, 2016 meeting.

April 20, 2016: Shirley Hodges will be doing a presentation on Genealogy and computers. She will discuss how our lives have been changed by the use of computers, e-mail and the Internet. The focus will be on learning to use our computers to get the maximum help with our genealogy research. Special care is given in this lecture to emphasize the importance of some rather fundamental basics which, when used together, make for a powerful data-gathering methodology.



Shirley will also do a presentation during the social hour before the meeting!

Our social hour begins at 5:30. We would like to invite you to join us. We really enjoy this time as it gives us a chance to get to know each other and their genealogy goals and what they are trying to accomplish in their research. At 6:00 Shirley Hodges will be doing a presentation on Genealogy Tips and Tricks

Mark you calendars and hope to see you there!



Our March General Meeting

We had a great March meeting. Chuck and Judy Chamberlain gave a very informative talk on the "End of the Civil War". It was fantastic to see everyone after the winter months. We especially enjoy the social time before the meeting. Some of the people at the meetings had been coming for years and we also have a nice mix of newer members. This time together gives us a good opportunity to talk with fellow researchers and discover their successes and the problems they are facing.



Eaton County Military Special Interest Group



While we have not resumed Military SIG meetings, we are still very interested in honoring our veterans and collecting and sharing that information.

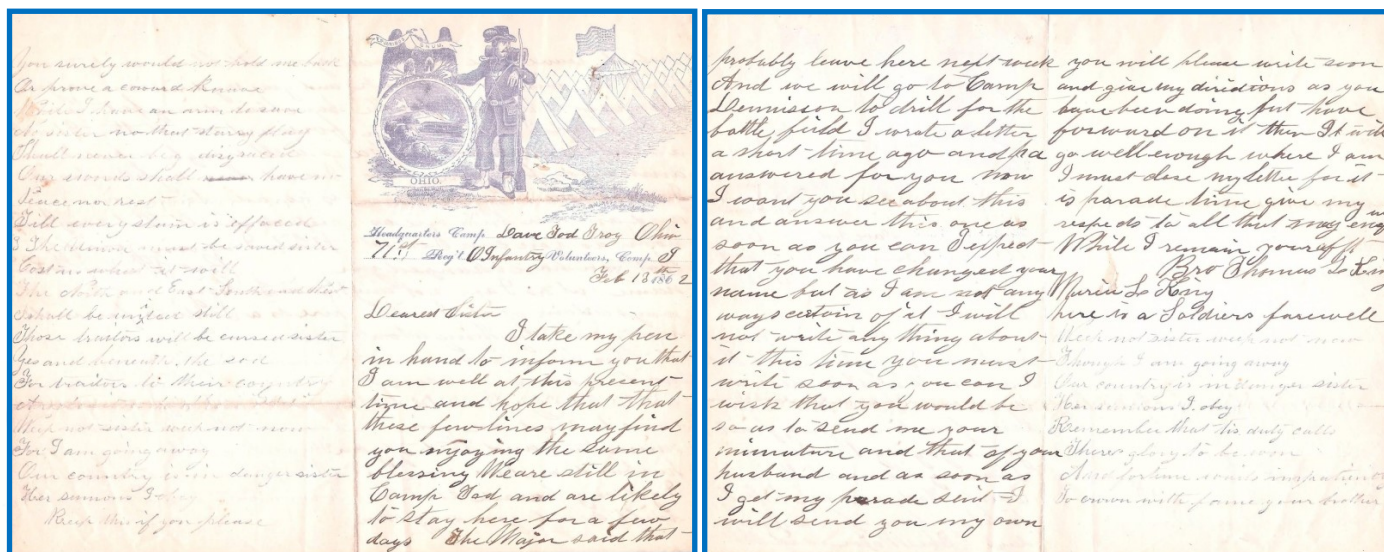
Marcy received this query earlier this year and she has worked very diligently on it for him. We have received some wonderful images of Civil War letters.



I am researching my wife's genealogy and have found that she is a descendant of William S King (10/11/1811-9/25/1887) and Jane Ann Livingston (b. ~1815). I know that he came from Connecticut and she from New York, but I am hoping to get more information on them, William's second wife (Elizabeth W. b. ~1815?), their parents and children.

My interest is highly motivated by a collection left to me by her family of civil war letters from children Thomas L. and Livingston T. to their eldest sister Maria L. Brackett. For whatever reason they were kept by Sarah Ann Carol King Butterfield (Aug. 1849-1934), my wife's second great-grandmother. All of the children born after Thomas were born in Eaton/Olivet. Aside from mentions in the 1845, 1850, and 1860 censuses, it has been very hard to piece together information remotely (I'm in Philadelphia).

If you could assist me in this research, I would be happy to pass along hi-res scans of the letters along with my transcription of their contents. Thomas L. was in the Army of the Ohio, 71st Regiment of Ohio Infantry, Company I. Livingston was attached to the 3rd US Artillery, Battery C, initially with the Army of the Potomac. At the very least I know that Thomas was at the Battle of Shiloh in Tennessee, that being the most recent letter I have scanned (transcription will take a while). Please see attached for the first letter from Thomas.



An on-line [Veteran Form](#) is available for people to complete, for either themselves or other veterans, and submit. The purpose of this form is to obtain information about veterans, such as when they served, and load the veteran into our Military Database.

If a [printed Veteran Form](#) is preferred, please click on the printed Veteran Form link, fill out the form and mail to us. Feel free to share this form!

Visit our Military website at www.miegs.org/MilitarySIG.shtml.

McLaughlin School Photos

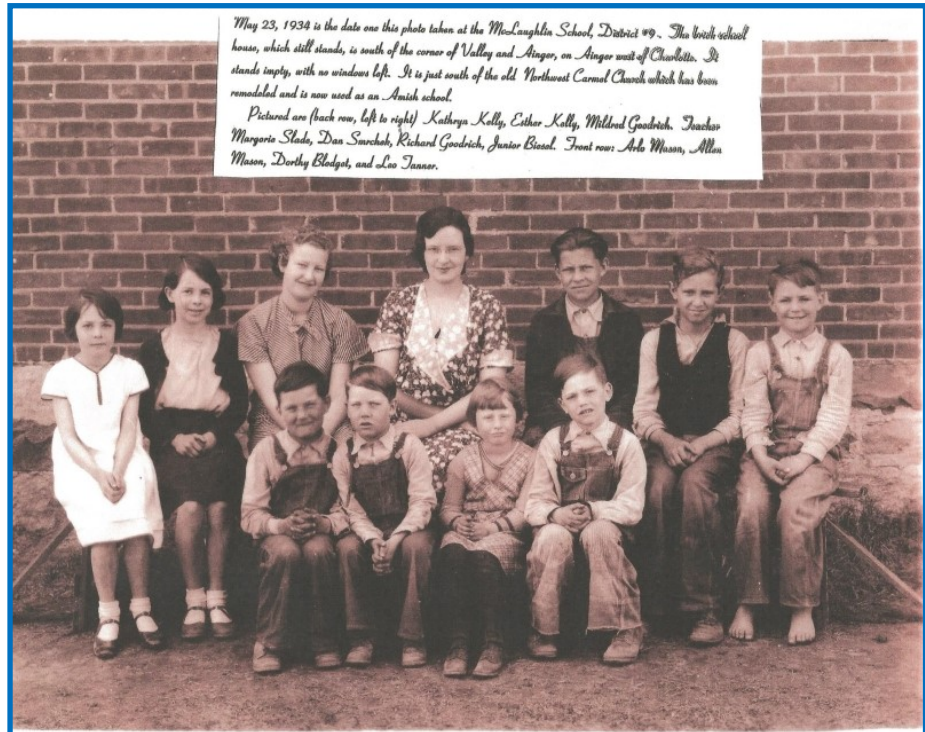
Barbara Dobberfuhl came in to do research in our library and had photos of the McLaughlin School. She later emailed scanned copies of the photos, along with many of the names, to Sharlene. Here are a few of the photos included with this group of about 20 photos.



Back tree, top to bottom:
Kathryn Kelly, Esther Kelly,
Blodget, Leo Tanner. Front
tree, bottom, Margie Tanner.



The Kelly kids in front
of the McLaughlin
School in winter, and
in summer.



Back: Unknown, Unknown, Esther Kelly, Kate Kelly.
Front: Unknown, Dorothy Blodget, Unknown, Margie Tanner, Unknown.



Mulliken Cookbook



Thanks Sue Thompson for sharing this with us!



STEAK AND ONION PIE

- 1 cup onions, sliced
- 1/2 cup Spry
- 1 pound round steak, cut in small pieces
- 1/4 cup flour
- 2 teaspoons salt
- 1/8 teaspoon pepper
- 1/2 teaspoon paprika
- Dash of ginger
- Dash of allspice
- 2-1/2 cups boiling water
- 2 cups raw potatoes, diced

Fry onions slowly in Spry until yellow. Remove onions. Roll meat in mixture of flour and seasonings and spices. Brown in hot Spry. Add boiling water, cover and simmer until meat is tender (about 1 hour). Add potatoes and cook 10 minutes longer. Make egg pastry (recipe below). Roll dough into a circle about 1/4 inch thick. Make several small openings for steam to escape. Pour meat into 8 inch greased casserole, lay cooked onions on top. Fit pastry over top and seal. Bake in hot oven at 450 degrees F. for 30 minutes. Serves 6.



EGG PASTRY

- 1 cup sifted all-purpose flour
- 1/2 teaspoon salt
- 1/3 cup Spry
- 1 egg, slightly beaten

Mix flour and salt. Add 1/2 of Spry and cut in until as fine as meal. Add remaining Spry and cut in until particles are size of large peas. Add egg, mixing thoroughly into a dough. Makes enough pastry to cover an 8 inch casserole.

Dora Langrell,
Mulliken, Michigan.

HAM LOAF



- 1/2 cup tapioca
- 1/4 teaspoon pepper
- 1/4 teaspoon paprika
- 1 teaspoon Worcestershire Sauce
- 1 tablespoon onion, chopped
- 1/2 pound ham, ground
- 1/2 pound pork, ground
- 1-1/2 cups milk

Mix all ingredients and bake in moderate oven until done. Requires about 1-1/2 to 2 hours to get done.

Donna Dravenstatt,
Mulliken, Michigan.



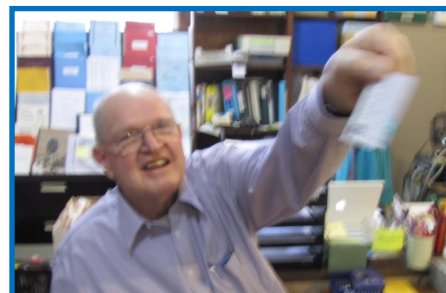
Probate Packets

The website is updated about once a month or so with the list of probate packets that have been scanned (www.miegs.org/Files/ProbatePacketScanned.pdf). There are now about 10,120 names that are scanned and we are scanning the "M" files.

We had a volunteer drawing this month and after passing the tickets around to shake them up as much as possible, then having Frank give them a final 'toss', Jim picked out the winning ticket.



Phyllis is starting a new box!



Congratulations

Group Picture!

Sue!



*Thinking Cousins!
Chris & Sue*

Cousins

Calling for Scanning Volunteers!

We have had a couple more new scanners this month! Welcome and thank you Becky and Dawn!



If you believe there is a scanned probate packet you want to look at and you are a member, email us at ecgsboard@gmail.com and request access to the files.

The files are stored on the cloud and members may request a link to the cloud site. The pdf files are stored alphabetically. (Note: While we are now scanning the M files, there are a few scattered files that begin with later letters because of misfiled folders or requested scans.)

Join us on Tuesday afternoons when you can!

The Eaton County School Database Project

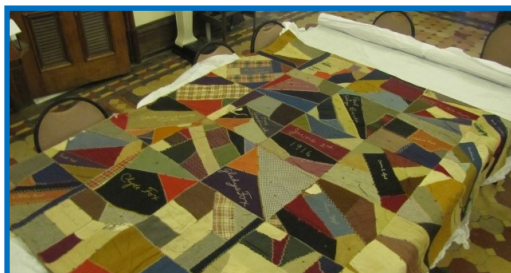


We always welcome school materials to add to the School Database! If you have school information you would like to share, we can scan your items on Tuesday afternoons (noon-5pm) or you may contact us at ecgsschool@gmail.com to send your information and/or to arrange a time to meet.

Miers School—1916, Teacher Emma Weaver

This beautiful quilt was made by the students at Miers school for their teacher Miss Emma Weaver. It was eventually donated to the Courthouse Square Association Museum and the Eaton County Rural School project was notified about it from Lois Thompson. The quilt is featured in the rural school book (below).

In February, Denise Riddle heard about this quilt and she arranged with CSA to bring the quilt downstairs for a showing so she could bring her grandmother to see it. CSA published on Facebook that it would be on display for one afternoon and a few people came in to see, including Denise and Geoffrey Riddle, with their grandma. Their grandpa, Fay Goodrich, and his brother, Ion Goodrich, signed the quilt. Marilyn Haigh Hulliberger is the granddaughter of Carson Haigh (siblings Lyal, Lester & Beulah, who married Ray Thompson). Bernice Ball Thompson was a teacher at Miers in 1960, 1961. Sue Thompson (not pictured) also has 4 of her Root relatives on this quilt.



Eaton County Historical Commission Rural School Project



The Rural School of Eaton County book, with more than 300 pages and a DVD may be purchased from the Eaton County Historical Commission by mailing a check (PO Box 411, Charlotte, MI 48813) or stopping by the Courthouse Square Association. Contact them by email at csamuseum@yahoo.com or phone 517-543-6999 for more information.

Program & Open House: Civil War Battle Flags

MICHIGAN HISTORICAL CENTER

MHC NEWS



March 9, 2016

Contact: Keith G. Harrison, 517-694-9394

Civil War battle flag program, open house to mark 150th anniversary of Grand Army of the Republic

On the night of April 6, 1866, 13 veterans of the Union Army of the Civil War gathered in an upstairs room in a small, brick building in Decatur, Illinois. The veterans' organization they formed that night, the Grand Army of the Republic (GAR), would influence the nation they fought to save for the next 90 years.

Michigan's commemoration of the 150th anniversary of the Grand Army of the Republic will begin with a presentation by Matt VanAcker on the state's Civil War battle flags collection Wednesday, April 6, at 6 p.m. Taking place at the Michigan Historical Center, located at 702 W. Kalamazoo St. in Lansing, this event is sponsored by the Friends of Michigan History, the Michigan Historical Center, and Michigan's Grand Army of the Republic Memorial Hall and Museum.

Approximately 90,000 Michigan soldiers fought in the American Civil War, and nearly 15,000 died. The bullet-torn, blood-stained battle flags that these men carried were their proudest possessions. VanAcker, who serves as the director of the State Capitol Tour and Information Service and as co-chair of Save the Flags, has spent the better part of the last 20 years assisting in the care, research and conservation of Michigan's battle flag collection.

The GAR 150th anniversary commemoration continues with an open house at Michigan's Grand Army of the Republic Memorial Hall and Museum - located at 224 South Main St. in Eaton Rapids - Saturday, April 9, from 10 a.m. to 5 p.m. and Sunday, April 10, from noon to 5 p.m. In addition to the two floors of artifacts and memorabilia from the Grand Army and its Allied Orders, special exhibits will be available. A silent auction will be held Saturday afternoon. Refreshments will be served both days, with a special 150th birthday cake in honor of the Grand Army Sunday.

Five U.S. presidents belonged to the GAR, and its members led the legislatures of most northern states and Congress. Among the local, state and national issues advocated by the Grand Army of the Republic were legislation promoting pensions for all veterans, the establishment of homes for veterans, voting rights for black veterans, and the establishment of May 30 as Memorial Day throughout the country. The organization helped create later veterans' organizations, including the Spanish-American War Veterans, the American Legion and the Veterans of Foreign Wars. It also sanctioned the creation of five Allied Orders of the Grand Army of the Republic that today ensure the legacy of the Grand Army.

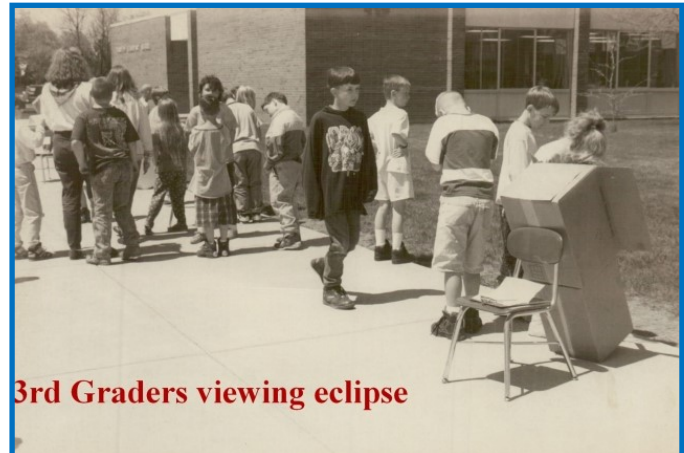
Michigan's GAR Memorial Hall and Museum is dedicated to ensuring that the memory, deeds and accomplishments of the GAR and its members in Michigan's 460-plus posts are not forgotten. The museum is free to the public.

The Michigan Historical Center tells the real stories of Michigan in order to help people discover, enjoy and find inspiration in their heritage. It comprises the Michigan Historical Museum, 10 regional museums, Thunder Bay National Marine Sanctuary and Underwater Preserve, and the Archives of Michigan. The Michigan Historical Museum offers three levels of permanent and changing exhibits that tell the story of Michigan's past from pre-contact through the late 20th century. .

Parkview Elementary School, Charlotte Photos

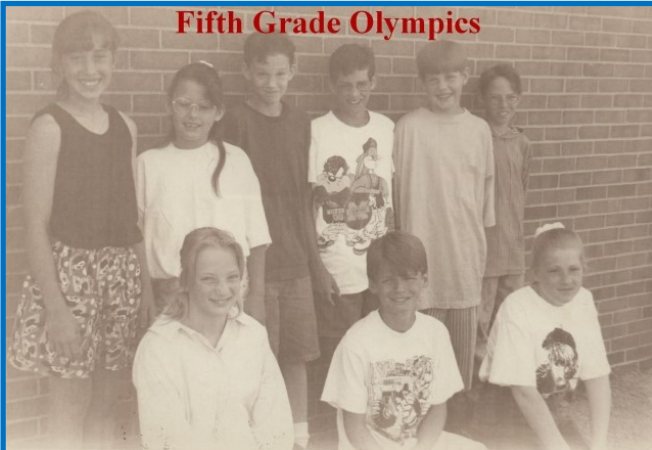
These are some photos from our P.642 collection.

Odyssey



3rd Graders viewing eclipse

Fifth Grade Olympics



"MNB"



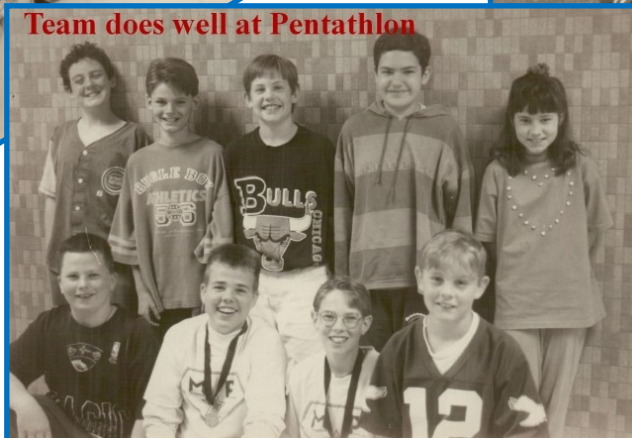
Parkview



Scouts plant Lon Howe's tree



Team does well at Pentathlon



Our Family Genealogies Section

Our research library contains a valuable section known as *Family Genealogies*. As time permits, we will scan the *Family Genealogies* and post excerpts from them in the newsletter.

If you haven't submitted your family genealogy to our library yet, you are welcome to do so. This is so helpful to researchers that may be researching your family name!

Family Genealogy 900.AL.01 v1—. The description is: Alwood- The Family Alwood; by T. Klaus; 1991; all name index to this book was compiled & donated by Krystal Simpson. Terry asked Krystal to donate a copy to us, plus she did an index. Author: Terry Klaus.

Version 1 (out of 2) contains over 250 images. Version 2 contains 49 pages of an index to version 1.

Alwood Genealogy

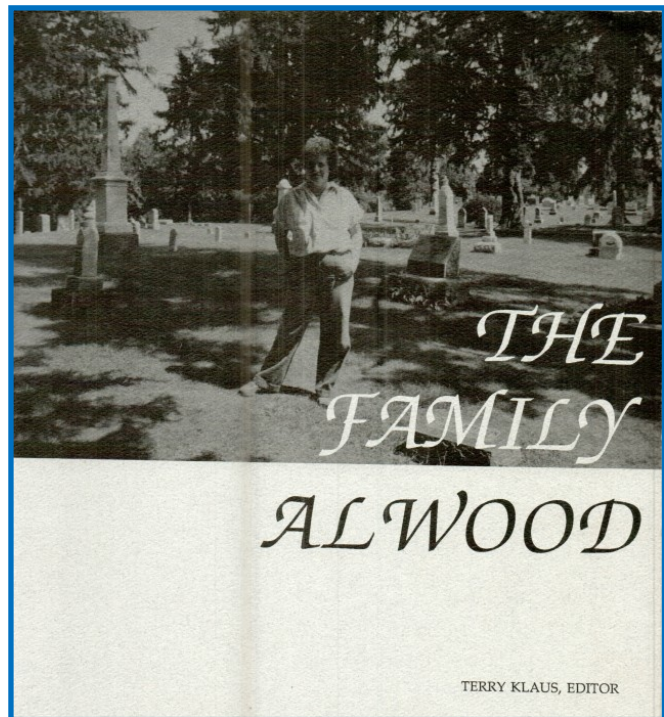
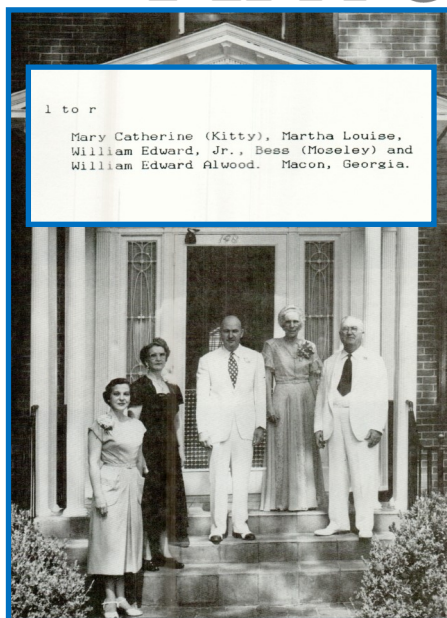


Table of Contents

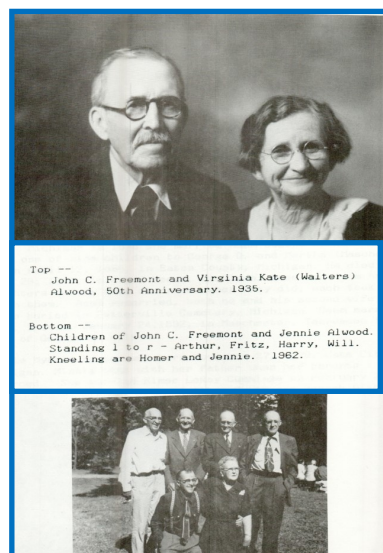


TABLE OF CONTENTS	
	PAGE
THE OTHER FAMILIES THAT BECAME A PART OF THE FAMILY ALWOOD	1
PEOLA H. ALWOOD AND MARY ANN SALSBURY	21
EPHRAIM KELLY ALWOOD AND ELIZABETH SALSBURY	25
MARY ANN ALWOOD	28
LEVI SALSBERRY ALWOOD	30
JOSIAH KELLY ALWOOD	114
SARAH ELIZABETH ALWOOD	142
LYDIA ANN ALWOOD	114
DAVID WILLIAM ALWOOD	158
SUSAN CATHERINE ALWOOD	212
REBECCA ALWOOD	214
JEMIMA MELISSIA ALWOOD	215
SALMAN A. ALWOOD	216

"Courtesy Archives of Michigan"

Rural Property Inventories at the Archives of Michigan

The Depression period found many surveyors, engineers, land appraisers, and other trained Michigan citizens out of work. At the same time, it became clear to tax administrators and government officials that the state needed a uniform set of data with which to establish assessment rates. In an effort to employ this unused skilled labor force, and to create a comprehensive source of information about real and personal estates, the Rural Property Inventory was established. This undertaking, sponsored by the State Tax Commission in cooperation with the Works Progress Administration (WPA Project S-110), was started late in 1935. The Inventory was designed to prepare detailed descriptions of all 1,500,000 distinct parcels of land in the rural parts of Michigan (excluding Wayne County).

See the [Land—Rural Property Inventories Primary Source Research Guide No. 16](#) for instructions to use [Seeking Michigan](#) to search for a rural property inventory. Eaton

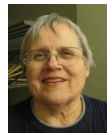
Example from Archives of Michigan, included with their permission.

The typical information collected is the name of the village, township and county, owners name and post office address, means of communication, farm building details, lands, school district, legal description of the land, building details, heat & light sources, fences and woodlands.

Houses and general land areas are sketched. Building description includes type, year built or remodeled and other details. Other buildings such as cribs and garages are described by brief narrative. Farm fences and "woodlot and forest timber tally" are described.

Nov 2016 The Allen County Public Library (ACPL) Bus Trip

by Shirley Hodges



Our bus trip is scheduled for Saturday, 5 November 2016. You can see the form at www.miegs.org/BusTrip2016.pdf.

I realize that we have quite awhile before the trip but I would like to give you some tips for researching at ACPL. There are some things I would really like to encourage you to do before we go on the trip. If you will take the time to do this preliminary work it will make your time at the library much more productive.

When we first arrive we will have a tour of the facilities for those who are interested. It will really help you find things though out the day. They also have their own presentation space inside The Genealogy Center now. If our attendees have research needs they can address, they would be happy to do presentations (e.g. how to effectively use their catalog, how to use PERSI, etc.)

Because they use copy cards for the copy machines and for printing out things on the computer you don't have to take a lot of change with you.

Go to the ACPL Genealogy Center Web Page. From this page you can access a great many helpful areas. Link: <http://www.genealogycenter.org/>

Especially helpful are the Catalog and Database Search engines search sites which you can access from that page.

Be sure and go out and look at the Brochure. I would encourage you to take time to read it over and it can be printed. This gives you an excellent breakdown of what is in the collection. Link: <http://www.genealogycenter.org/docs/default-source/resources/aboutusbrochure.pdf?sfvrsn=2>

I encourage you to try and go out and look for your families so that you will know what materials are available to you. It helps to know what they have available.

You can also search to see what they have for the locations that your ancestors lived in. I am always looking for any materials that they have added for Cass Co., MI.

You might also check and see if they have any family histories that mention your families. I discovered that there are 53 genealogies with references to Levi Tietzort. If you have a listing of the materials that you have already checked you can devote your time to the items that you might not have seen before.

Check the listing of the On-site Databases they have. It will give you a description of all the databases that are available at the library. <http://www.genealogycenter.org/Databases.aspx>

You can decide if there are some that you want to check out and prepare a list of the items you would like to find.

I also encourage people to make a sheet that you can prop up on your desk stating the names that you are researching. If you make the names larger enough so that other researchers can see them you might find a cousin who is also there researching. I have found this to be helpful. With a name like Tietzort if they can recognize the name or pronounce it I know that they are probably my cousin.

Mark the date on your calendar so that you can go with us if possible. We always have a great time. We are a very social group so we will be stopping at the Golden Corral for dinner. This gives us a chance to unwind and share success stories.

Prepare for your bus trip!

Minnie Evans Keys Honored in 1944

Submitted by Elizabeth Snodgrass, 2012

Minnie Evans Keyes Right Worthy Grand Secretary Emeritus Past Grand Matron of Michigan

As part of Eaton County Association's, OES, 100 years of celebration, we are honoring those that have made a difference to Eaton County and Michigan Eastern Stars.

Sister Minnie E. Keyes: "Her very name has been, and always stands out as a symbol of Eastern Star service in all parts of our Eastern Star World." This quotation is from an article written by Genevieve Nauman on page 69 in the Eastern Star Ninetieth Anniversary Album. From the 1944 Book of Proceedings celebrating her silver anniversary, the attributes of greatness which brought her the highest success, honor, and distinction are expressed in this verse:

"A little dream –and a hope began
And a road built straight and true,
To a lofty goal that the little dream
Had first aspired to.

"A little faith – and a soul gained
strength

And began to fight again, ..."

Winifred G. Woods (page 155)

Sister Minnie was born in the Bellevue area of Eaton County on October 12, 1866. After having graduated from Olivet College, she taught in a rural school until her marriage to Karl D. Keyes. They continued to be benefactors of area youths by providing scholarships for the youth so that they could continue their educations at Olivet College.

Sister Minnie began her Eastern Star life in 1899 when she and her husband, Karl, helped to organize and then were initiated into Olivet Chapter #24. She proceeded to lead Olivet Chapter as Worthy Matron seven times.

She dreamed of and set a goal to bring the chapters of Eaton County

the planning for an association came to fruition in February of 1913. This occurred while she served as Worthy Grand Matron. In the book of proceedings of the Grand Chapter for 1913, in her Address of the Worthy Grand Matron, Extracts from the Diary of the Worthy Grand Matron, there



Minnie E. Keyes
International Headquarters
Washington, D.C.

is this entry: "February 12th was one of the proudest days in my career. It was the first meeting of Eaton County Association and my home Association, at Eaton Rapids....". (Page 39)

Sister Minnie served our Michigan Grand Chapter as Worthy Grand Matron in 1912-1913. She was a strong supporter of county associations as seen in this quotation, again from the 1913 book of proceedings: "The benefits derived from membership in a County Association cannot be overestimated. It is here that true fraternity prevails and inspiration is given to those who believe in and labor for, the good of our Order." (page 112-113) In addition to her strong support for county associations, she had the welfare of the members in mind when she expressed her dream and goal to form an Eastern Star orphanage. That dream and goal were realized on September 23, 1919 when the Eastern Star

She was not content. In 1919, Sister Minnie was elected secretary of the General Grand Chapter and received the title of Right Worthy Grand Secretary. A title she held for twenty-seven years. During that time she worked for the establishment of the International Temple. The term one dollar in a lifetime was coined, with the idea that each member of the Order would give one dollar at the time of their initiation that would go toward the Temple. It took until 1934 for this to happen, when the Belmont Mansion in Washington D.C. was acquired. Today we may still visit the Belmont Mansion as it continues to be known as the International Temple of the Order of the Eastern Star.

In 1944, a reception was held in her honor recognizing her silver anniversary as Right Worthy Grand Secretary. After 27 years Sister Minnie retired and at the 1946 General Grand Chapter in Tampa Florida, Most Worthy Grand Matron, Marie Lander, alluded to sister Minnie Keyes as the best-known and best loved Eastern Star member in all the Eastern Star World. NO ONE CAN EVER EQUAL HER RECORD (1944 Book of Proceedings). She then received the title of Right Worthy Grand Secretary Emeritus.

Sister Minnie returned to Olivet and Eaton County. Each year we hold a picnic that bares her name. On Friday afternoon, January 15, 1960, Sister Minnie E. Keyes left us for a higher world. She truly was and continues to be an inspiration to all of us.

Submitted by Elizabeth Snodgrass,
Eaton County Association President,
2012

Found in Charlotte Community Library

By Sherry Copenhaver




I was in the Michigan Room in the Library when the Librarian Deanna found a metal file box that is labeled 'Cassette Tapes of Interviews of Eaton County residents of 50-100 of memories'. There are not many, and most of the tapes are actually missing, but not all of them are. In some cases, there are written transcriptions and/or other materials. I made a quick list of what is in this box in case one of your relatives is in here and you might like to check this box out!

Cassette Tapes of Interviews With Residents of Eaton Co.

Their recollections of life in this area 50-100 years ago.

Placed in Charlotte Public Library.

Name	Year	Subject of tape	Photo	Cassette/Transcription	Info
Nyle E. Dean	1975	Reminiscences of life in Eaton County in 1800s.	Photo	Cassette	
Wilbur G. Estell	1981	Farming in Eaton County, MI (1900-1960). (A Folklore Project).			Consent form only in folder
Clyde A. Fulton	1979	Reminiscing about his life in Charlotte from 1910 on.	Photos	Transcription	Newspaper clippings
Ivan Goodrich	1979	Interview.	Copies of photos.	Transcription	Fordham School souvenir 1903-1904
Helen M. Osborn	1976	Records the part her parents, grandparents & great-grandparents played in the settling & growth of the city of Charlotte, and reminisces about her own childhood in this city.	Photo		Gives parents & grandparents. Obit 1990.
Doug Schultz	1984	3-generation blacksmith shop in the village of Chester, MI, Eaton County. (See example of slide in the 'Photo' column.)		Cassette	Cassette and tray of 34 slides only in the folder.
Guy O. Taylor	1975	Railroading.		Transcription	
Winifred E. Wells	1975	Reminiscences of her childhood and adult life in Eaton Co., Mich.	Photos		Clippings. Obit.



150th Anniversary **Grand Army of the Republic**

Michigan's G.A.R. Memorial Hall Museum
224 South Main, Eaton Rapids

Saturday, April 9 -- 10am to 5pm
Sunday, April 10 -- Noon to 5pm

2 Floors of Relics **Special Exhibits**

Silent Auction Saturday **Admission Free**



JOIN US FOR OUR ANNUAL

Family History Seminar

Saturday, April 23, 2016

8:00 a.m.—3:15 p.m.

Lansing Michigan Family History Center

The Church of Jesus Christ of Latter-day Saints

431 East Saginaw Hwy • East Lansing MI

NO FEE

Sponsored by the Lansing Michigan Family History Center and offered to you as a service by The Church of Jesus Christ of Latter-day Saints.

We are pleased to feature

- New Topics
- New Presenters
- 40+ Different Classes / Activities

Doors Open at 8:00 a.m.

Details

- Syllabus of all Seminar Materials available for \$25 until April 10, 2016, after \$30.
- Register on-line early for preferred class choices.
- Day of Seminar registration – choose from classes not closed.
- Visit us at www.lansingfhc.org

Questions

Call us at the FHC, (517) 332-2932



This newsletter is created from information members have submitted. **Anyone is welcome (and encouraged!) to submit** Eaton County family history information or articles. Please email these to ecgsnews@gmail.com and designate the information you would like included, such as your location and/or email address. Your submission must be signed. Pictures are welcomed!

While the newsletter is available for all to read from our ECGS website, only members may post queries and member happenings.

All digital newsletter issues will be available on our website with a target date of posting them on the 1st of each month. See the www.miegs.org/Newsletters.shtml.

Note: Some clipart used in our newsletter was provided by [MyCuteGraphics](http://MyCuteGraphics.com).

Ways You Can Help to Volunteer at (or for) ECGS

Please note: We appreciate any help we receive! We will never pressure you to help us! We only ask if you have volunteered for room duty and you cannot make it, call (phone numbers provided) us and let us know to get coverage.

Room Volunteers: Room volunteers are here to help people who come in to research. While some of our room volunteers actually help do the research, this is not a requirement. The main tasks are to answer the phone and guide the researchers to our various areas they can research.

Probate Packet Scanning: This is an on-going project that meets regularly at the ECGS room to scan probate packets on Tuesday afternoons. However, anyone can scan when the room is open.

Indexing and/or proofreading at home: Using scanned images, we can show you how to index and/or proofread at your own leisure at home.

Mini Take-Home projects: This is a brand new type of project we are trying. People have taken home several projects and we will see how that goes.

Special Projects: Possibly set up an area in our room that will have special projects that you can work on when you come in. Again... new idea to try! More to come on this.

Every effort is made to present authentic material; the Eaton County Genealogical Society cannot be held responsible for the accuracy or the publishing rights of material furnished by contributors.

Thank You!

Thanks to all of you who donate in any way to our Society! Our Society is run by volunteers and is funded by donations and fund-raisers.

Eaton County Genealogical Society Publications Order List

P.O. Box 337, Charlotte, MI 48813-0337 Phone 517-543-8792

As of January 1, 2015

Item	Cost per item	Total Cost
Cemeteries of Eaton County, MI:		
Brookfield Twp., 41 pp., indexed as of September 1991	\$ 8.00	
Chester Twp., 66 pp., indexed as of July 1990	\$ 8.00	
Roxand Twp., 86 pp., indexed as of January 1993	\$10.00	
Sunfield Twp., 44 pp., indexed as of April 1991	\$10.00	
Walton Twp., 119 pp., indexed as of March 1996	\$10.00	
Maple Hill Cemetery (Eaton Twp.), indexed as of 2009	\$20.00	
Kalamo Twp., 102 pp., indexed as of 2001	\$18.00	
Vermontville Twp., 122 pp., indexed as of 2001	\$18.00	
Burkhead-Green Funeral Home, Charlotte, MI 27 Mar, 1885 thru 29 Dec, 1947, 198 pp., indexed	*** \$18.00	
Pray Funeral Home, Charlotte, MI 18 Nov 1921 to 21 May 1932, 112 pp., indexed	\$18.00	
Naturalization Index for Eaton Co., MI 55 pp.	\$ 4.25	
Eaton County Quest, back issues, #1 through current available (please specify issue no.)	\$ 4.50	
Plat maps of Eaton County, MI, individual townships (please specify which townships). (Note: Shipping up to 16 townships count as one item.)		
1860 Price is \$.25 per Township (Hamlin Twp. Not available)	\$.25	
1873 Price is \$.25 per Township	\$.25	
1895 Price is \$.25 per Township	\$.25	
1913 Price is \$.25 per Township	\$.25	
Cemetery Symbols CD (see www.miegs.org/Symbols.shtml for more information)	\$12.00	

Shipping & Handling

1-3 items - \$2.20

3-5 items - \$3.30

6 or more items - \$6.60

*** Note: Please add \$2.50 for each "Burkhead-Green Funeral Home" book.

Sub total _____

MI res. Add 6% sales tax _____

Shipping & Handling _____

Total Due _____

Send the above items to (please print) _____

Name _____ Phone _____

Address _____

City _____ State _____ Zip Code _____

Amount enclosed _____ Check No. _____

(Please make checks payable to: Eaton County Genealogical Society)

Please note: We plan to address publications in the next year and hopefully will be adding more to our selection. Also, we plan to offer these through the website using PayPal.