

Eaton County Genealogical Society

Located in the 1885 Eaton County Historical Courthouse

100 W. Lawrence Ave., P.O. Box 337, Charlotte, MI 48813-0337

[Members]



Would you like to share your family history? Would you like to place a query in our newsletter? Perhaps someone who reads our newsletter may know something about your ancestors!

Submit your information to P.O. Box mailing address above, or email to ecgsnews@gmail.com.

2015 October Calendar

Wed Nov 11 General meeting 7:00pm. From 5:30pm—7:00pm: Social hour.

PLEASE NOTE:

The meeting is the second Wednesday of November!

Sat Nov 21: Open for research 10am-2pm.

Sat Sep 21: Family History Writing Group from 10am—Noon at the 1885 Courthouse

Every Tuesday Afternoon:

Probate Packet Scanning (any time during 12-5)

2015 Calendar

Monthly Meetings:

Wed Jan 19 Special Interest Group
Wed Feb 16 Special Interest Group
Wed Mar 18 General Meeting
Wed Apr 15 General Meeting
Wed May 20 General Meeting
Wed Jun 17 General Meeting
Wed Jul 15 General Meeting
Wed Aug 19 General Meeting
Wed Sep 16 General Meeting
Wed Oct 21 General Meeting
Wed Nov 11 General Meeting

Regular Projects:

Each Tuesday noon—5pm:
Probate Packet Scanning

See our Calendar of Events at www.miegs.org/Events.shtml.

Officers Jan 1, 2015 through Dec 31, 2015

President	Bill Haines
Vice President	Chuck Chamberlain
Treasurer	Sher Brown
Recording Secretary	Jan Shepler
Membership Secretary	Barb Smith
Corresponding Secretary	Marcy Cousino
Librarian	Sharlene Thuma
Web Maintenance	Sherry Copenhaver
Publicity	Joy Black
Computer Chair	John Evans
Council Delegate	Jim Collins
Council Delegate	Jo Glasgow
FGS Delegate	Gary Copenhaver
Trustee:	Shirley Hodges, Sherry Copenhaver, Liz Jones

CONTACT US

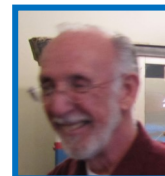
Phone: 517-543-8792

Email: ecgsnews@gmail.com

Open Room Hours: Tues-Thurs 10am-2pm

OFFICER & COMMITTEE REPORTS**President:** Bill Haines.

October 10 was a special day for your society, as the volunteers who do the critical work for us were recognized at a brunch. Seeing such a large gathering (37 attendees) was a reminder to me of how many of our members have been so generous with their time to perform a variety of tasks in our behalf. Volunteer organizations such as us depend on such generosity, and we are certainly blessed.

Vice-President: Chuck Chamberlain.

November is going to be real important. First the meeting is on the 11th. Next, we have a slate of officers to elect. The budget needs approval, The bus trip is coming up real soon. Shirts need to be ordered. MGC is having the fall meeting on November 14th at the State library. Last of all I'm working on a presentation relating to our trip to Virginia for the 150th anniversary of the end of the Civil War.

Treasurer:

Sher Brown

As of October 12, 2015

\$ 3,875.12	Checking Account
\$ 2,063.71	Snack Food Account
\$ 3,220.78	Undesignated Donations Account
\$ 4,474.64	CD updated annually
<u>\$ 13,634.25</u>	<u>Total</u>

**Membership:** Barb Smith**New Members:****Welcome new members!**

See our [Membership](#) page for 2015 membership dues and on-line application.

Thanks Barb for an awesome job of proofing the newsletter each month!



If you are a member of Facebook, we would invite you to check out our Facebook page. There are a lot of great items put out there that are of interest to those who have ancestors from Eaton County.



**Save The Newspaper Project Fundraiser—Enjoy A&W
Spaghetti Dinner!**



THE INGHAM COUNTY GENEALOGICAL SOCIETY
is working with the

A & W RESTAURANT

628 North Cedar Street Mason, Michigan

Enjoy a Spaghetti Dinner for \$5.99

MONDAY — November 9, 2015

11:00 a.m. - 8 p.m.

**A portion of each meal sold goes to
The Ingham County Genealogical Society
SAVE THE NEWSPAPERS Fund Raiser Project**

**PLEASE HELP US RAISE MONEY FOR THE PRESERVATION OF
THE OLD INGHAM COUNTY NEWS NEWSPAPERS – 1970 to 2000
(AND OTHER VITAL RECORDS FROM INGHAM COUNTY)**

**These records are important to everyone,
not just those interested in history or Genealogy.**

**Come in, have a great meal and help support The Ingham County
Genealogical Society's effort to preserve history!**

**For more information: <http://www.icgsweb.org> or Facebook.com/icgs
Or Please call the ICGS President - Diane Bishop - 517-676-7140**

Michigan Genealogical Council (MGC)

See their website at mimgc.org/. See their [Research](#) page for helpful links!

The MGC Delegate meetings are held in January, March, May, July, September and November each year. Check the MGC Community Calendar for the date, time and location. They publish newsletters four times a year. To see these newsletters, visit the MGC [Newsletters](#) page.

MGC 2015 Fall Family History Event

The Michigan Genealogical Council
& The Archives of Michigan
are pleased to present:

A Day with Paul Milner

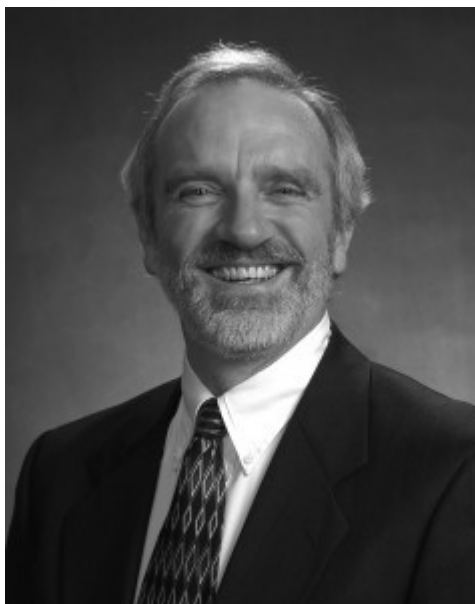
Saturday, November 14, 2015

9 a.m. — 4 p.m.

Michigan Historical Center

702 W. Kalamazoo St.

Lansing, Michigan



Featured Speaker
Paul Milner

register online at [Eventbrite](#) or [US mail](#). [Get the full schedule](#).

TICKET TYPE	SALES END	PRICE
Early Bird with no lunch	Nov 8, 2015	\$45.00
Early Bird with box lunch	Nov 8, 2015	\$56.00



2015 Historical Commission Heritage Award



The award ceremony was held on October 17th and featured a program by Mason Christenson about research on websites for Eaton County, the 2015 award recipient presentation and "Mark Twain" himself! We had a great day, hosted by Courthouse Square Association and held at the 1885 Historical Courthouse.

Mason explained several websites that have Eaton County information. In some cases, he brought up the websites to show quick examples of what is possible to find. Handouts were distributed with the website addresses and these links will be shared over the next month or two in this newsletter.

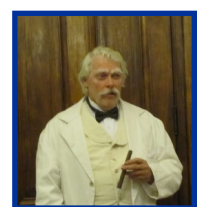
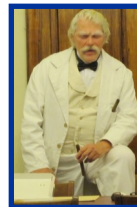


Sarah Buckmaster, CSA's Collections' Manager, spotlighted a map found in the attic this last spring when the senior class worked for their volunteer day clearing and sorting out items. They estimate this to be an 1884 map and everyone was very excited to find this!

The very deserving recipient of the Heritage Award for 2015 is Jan Sedore for her work on the Eaton County Rural School book project. Jan could just as easily be awarded for many other achievements as she is very instrumental in the Sunfield Historical Society, the Welch Museum, the Historical Commission and anything anyone needs help with! Jan spent countless hours scanning at the courthouse, meeting with people at medical care facilities, meeting with people at their homes, writing stories, keeping track of who was writing which school stories, working with the publisher, ordering the books, creating the dvds & dvd labels and every aspect of the book. Jan also scans materials for ECGS in her spare time! Eaton County is very lucky to have Jan as a volunteer!



And last, but not least, a delightful entertaining visit from "Mark Twain"!



1860 Map of Barry and Eaton Counties : ► <http://www.loc.gov/item/2012593144/>
Sanborn Maps

- Charlotte in 1911 http://www.loc.gov/item/sanborn03959_005/
- The rest of Michigan is available via the Capital Area District Library <http://www.cadl.org/research-and-learn/research-tools-and-guides/browse-subject/history/>

Eaton County Atlases available on the Hathitrust website
(www.hathitrust.org)

- (1873) Atlas of Eaton Co., Michigan http://hdl.handle.net/2027/miua.2933891.0001_001?urlappend=%3Bseq=7
- (1895) The county of Eaton, Michigan : topography, history, art folio and directory of freeholders http://hdl.handle.net/2027/miua.2911328.0001_001?urlappend=%3Bseq=9

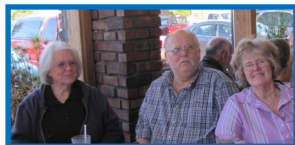
The 1913 Eaton County Atlas and Platbooks from 1967 and 69 are available on the Historic Map Works website: <http://www.historicmapworks.com>

Volunteer Appreciation Breakfast

A Volunteer Appreciation Breakfast was held at the Charlotte Big Boy restaurant in October. Volunteers, along with spouses, were invited to a breakfast to show a small token of appreciation and a big 'Thank You' for the time they spend in making our society the success it is.



We happened to capture a photo of the tallest (Jim) and shortest (Marjie) people together!



Even though we were spread around tables and several booths, there was talking and laughter everywhere! After the group picture was taken, everyone sat somewhere else in order to chat with others!

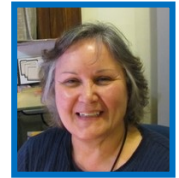


A BIG Thanks to Sher & Kent for arranging this and making it happen!



Phyllis gave Steve, Frank & Sherry cards for helping her to help ECGS! Phyllis is a GEM!!



ECGS Librarian: Sharlene Thuma

Thank you to the following people for their generous donation to our library:

- Shirley Bryson~ *A Profile of Minor Walton Bean Company, Post Bros. & Son, Chester Elevator Co., Personal Holdings*, April 1982 (includes color photos & map layouts- some short bios of prominent workers)
- Elna Whiting~ *Life magazine*, Jan. 21, 1972 (contains an article about SP4 Jerry N. DUFFEY; *The One Boy Who Died: A Week's Dead In Vietnam*)
- Janet Skipper~ articles from *Family Tree Magazine*, Sep. 2015, printed from online, *Surnames: Family Search Tips & Surnames Origin*
- Linda Kellogg Peterson~ framed group photo: *Eaton Co. Mother's Encampment, June 25-30, 1938, W.K. Kellogg Foundation, Clear Lake Camp*
- Vera Bruce Estate~ *Tom & Minnie BRUCE Family*, 19 pp.; & Charlotte High School year-book, *Charhian '78*
- Chuck Brandon~ two color photocopies of student souvenir, *School District No. 8, Township of Chester, Eaton Co., Mich., Term April 12, 1886 - July 2, 1886*, teacher- Miss Flora BOHN
- Lola Wilson~ *CHS Reunion 1954-2004* (Charlotte High School)
- Phyllis Whidden~ *Rose Hill Cemetery, City of Eaton Rapids, MI* (maps of cemetery sections with numbered plots).
- Betty Rolfe~ four photocopied photos of the *Charlotte Phone Co.*, 1960; & and *The May -Flower And Her Log: July 15, 1620 - May 6, 1621*, by Azel Ames, M.D., 1901



Lost Access to CultureGrams

A message from Daniel Harris, Account Manager for Public Libraries
ProQuest | 789 E. Eisenhower Pkwy | Ann Arbor, MI 48106 USA
www.proquest.com

The Michigan Electronic Library discontinued certain ProQuest subscriptions for statewide access. If you haven't been receiving emails from MeL or MCLS, then you've likely noticed the loss of access since October 1st.

Fortunately, MeL retained HeritageQuest Online, so Michigan public libraries will still have access to this cornerstone for genealogy research (and for those that subscribe to Ancestry Library Edition separately, you'll continue to enjoy the synergistic benefits of these two complementary databases). However, **CultureGrams Online**—a public library favorite for years—did not fare so well.

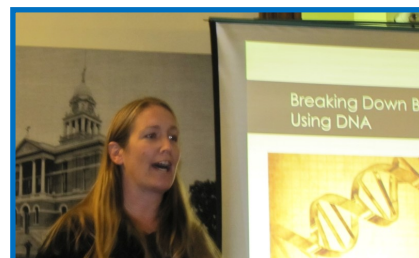
If you haven't been receiving emails from MCLS, then you probably haven't heard that we're offering huge discounts to public libraries to help them retain the database for patrons post-MeL. I would be happy to provide a quote if you'd like to take a look.

NOTE: MeL also discontinued subscriptions to eLibrary, SIRS Discoverer, SIRS Renaissance, and the Lansing State Journal. Most libraries we've heard from have directed their immediate attention to CultureGrams Online, but similar discounts are available for these other products as well.

2015 October General Meeting



Bethany Waturbury, owner of Next Of Kin Research, presented an excellent program on "Using DNA to Break Down Brick Walls". In addition to this subject, she described the pros and cons of the three DNA testing companies and what you can do with the results once you get them.



After the presentation, several folks lined up to ask their questions about the results from their own DNA results or other DNA



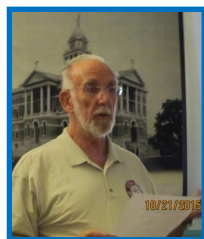
During the Social Hour, Shirley Hodges talked about how to prepare for the bus trip to the Allen County Library coming up on November 7th. Shirley has hosted this trip for several years and had plenty of helpful hints!



John & Jan are syncing their phones to work together to be at the courthouse early for the bus trip!



Slate Of 2016 Officers Presented for Vote at November Meeting



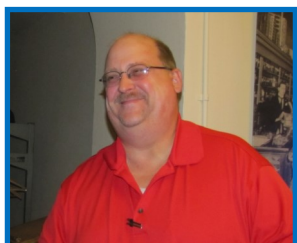
Chuck Chamberlain asked Liz Jones to state the list slate of officers for the voting at the November meeting. Bill Haines, president, was not able to attend the October meeting. Liz stated that anyone interested in running for an office



not on the slate contact either her or Bill Haines. Following is the list to vote on for next month.



President:: From Bill Haines to Charles (Chuck) Chamberlain.



Vice-President:: From Chuck Chamberlain to Kent MacDonald.



Membership Secretary From Barb Smith to Dianna Emerson.



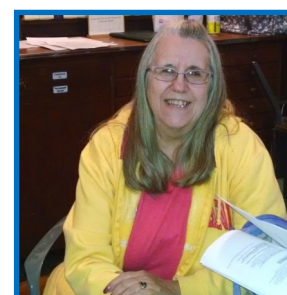
Trustee From Shirley Hodges to replace herself.



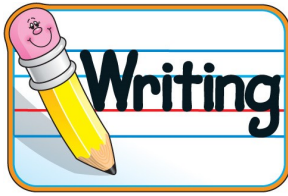
Running for office!!!



Thanks for picking out some new chairs for the library Chuck!! They are very comfortable!

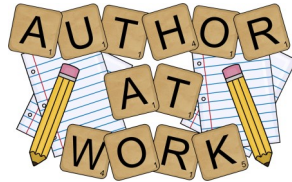


Eaton County Family History Writing Special Interest Group



The Writing Group did not meet in October because the Eaton County Historical Commission Annual Heritage Award ceremony fell on the regular day and same location of this meeting.

Meetings resume with the November meeting being on Saturday the 21st from 10:00am to Noon.



Writing Your Family History by Shirley Gage Hodges

Share me to annoy your friends



I'm on my way

We are now in November and getting closer to Christmas. There is still time to write your family history and give it to someone that you love. The most precious gift that you could give to your loved ones is the gift of your memories. You can be sure that no one else will be giving them the same thing. Our memories really are our most cherished treasures. Be sure and share them with your family.

The next meeting of the ECGS Writers Group will be **Saturday, November 21st** from 10:00 - 12:00. We will be meeting at the courthouse. The research room will also be open for research from 10:00 to 2:00 on that day.

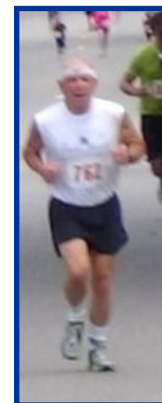
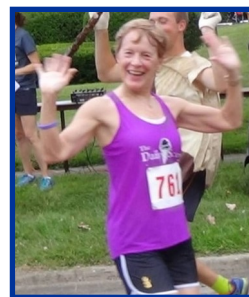
Everyone is welcome to come and get and share ideas. If you have something you would like to show be sure and bring it along.

Probate Packets:

The website is updated about once a month or so with the list of probate packets that have been scanned (www.miegs.org/Files/ProbatePacketScanned.pdf). There are now about 8,890 names that are scanned and we are scanning the "K" files.

We have some dedicated runners in our group of volunteer scanners. Steve and Joann DePeel run several times during the spring through fall, raising money for charity purposes. They love doing this and we love hearing

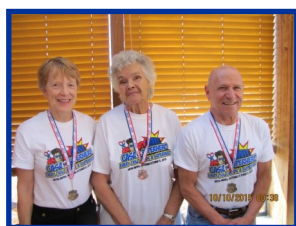
about their runs. They often wear the t-shirts they received by participating in a run the next time they come to scanning. Joann sent this quote about volunteers, and these photos from one of their recent runs, where she is dancing with the 'pancake man'.



"There's nothing stronger than the heart of a volunteer"

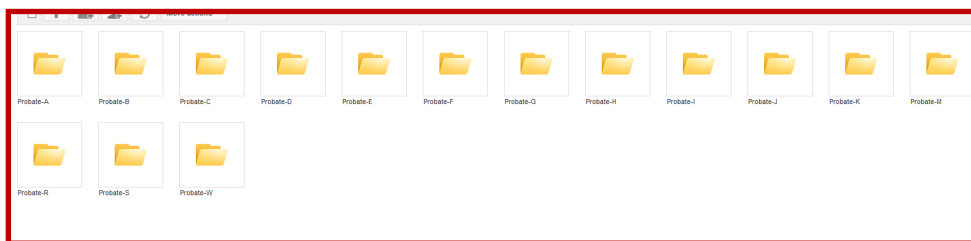
By James Doolittle

Another charity walk/run event was in Eaton Rapids in October and Steve, Joann and Phyllis took part in this, along with many of Phyllis's family. This called for dressing up in super-hero costumes and at our Volunteer Appreciation Breakfast, they wore their t-shirts and brought in some photos of their fun day!



If you believe there is a scanned probate packet you want to look at and you are a member, email us at ecgsboard@gmail.com and request access to the files.

The files are stored on the cloud and members may request a link to the cloud site. The pdf files are stored alphabetically. (Note: While we are now scanning the files, there are a few scattered files that begin with later letters because of misfiles folders or requested scans.)



K

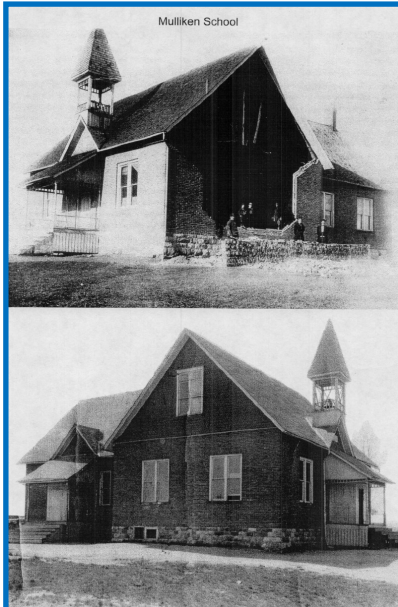
Join us on Tuesday afternoons when you can!

The Eaton County School Database Project

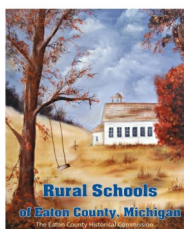
We always welcome school materials to add to the School Database! If you have school information you would like to share, we can scan your items on Tuesday afternoons (noon-5pm) or you may contact us at ecgsschool@gmail.com to send your information and/or to arrange a time to meet.



Misc. Mulliken School photos.



Eaton County Historical Commission Rural School Project



The Rural School of Eaton County book, with more than 300 pages, includes a DVD with many indexes and images at a price of \$25.00 plus \$7.50 shipping & handling if mailed. Books may be purchased from the Eaton County Historical Commission by mailing a check (PO Box 411, Charlotte, MI 48813) or stopping by the Courthouse Square Association Museum. Contact them by email at csamuseum@yahoo.com or phone 517-543-6999 for more information.

A Query about the Barnum's in Welch Cemetery - By Sherry Copenhaver

We received the following query: *Hi, we were up there last month for a visit. We were looking for our Lewis and Margaret Barnum relatives. Thanks so much for your help that day. Years ago I took photos of the Welch cemetery. I took a photo of Charles Barnum May 8, 1809-Mar 10, 1844 headstone. I don't remember him being near our group and wonder if you have anything else on him? I've searched all the websites and can't find more on him. Do you have a site I could find an obit? If we came back up there could we find anything on film? Newspaper? We would appreciate any help you could give me. Thanks so much.*

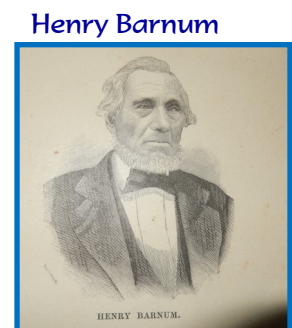
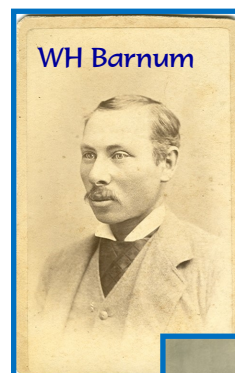
This request was referred to our volunteer researcher and in the meantime, I looked for the Barnum cemetery headstone photos in Welch cemetery and sent them to Linda. I received this answer in response to two of the 17 photos: *Do you know at least 5 of us have been to that cemetery numerous times. WHERE did you find Daniel and Henry Barnum? I have been searching ALL OVER for them. I am so glad to talk to you. I spent over 6 hours yesterday going through two libraries looking for some hint of them. I am SO grateful.*



Linda continues in the next email: *I looked at the Daniel photo and I can see it was flipped over and buried. I'm so grateful to see it. Yes the H. is for Henry. He's the one everyone is confusing with another Henry in Ontario NY. One died in Jan and the other in April the same year. I can't express how grateful I am to see them and to know I have the correct date. Henry, Willis, Daniel, Lewis Jr. and possibly Charles (1809-1844) are siblings to Lewis Sr. and Margaret (Rhodes) Barnum.*

From Sherry: Let me tell you about Phyllis, who took this photo. She was in her 70s when she took photos of Welch cemetery and she has energy to spare! She does everything she can if she believes there is a headstone to be photographed. While this is not the first headstone she has dug out of the ground, it is the first one to my knowledge that someone has been searching for it and not found because it was not visible. We are very happy for you! Linda responded: Tell Phyllis it is the find of my lifetime! Henry and Daniel were the last of my Barnum siblings and they were right under my nose.

Linda sent some of her family Barnum photos. Thanks Linda!!



Sadie, Leo, Edward & Harold Barnum

Our Family Genealogies Section

Our research library contains a valuable section known as *Family Genealogies*. As time permits, we will scan the *Family Genealogies* and post excerpts from them in the newsletter.

If you haven't submitted your family genealogy to our library yet, you are welcome to do so. This is so helpful to researchers that may be researching your family name!

Family Genealogy 900.BA.08—. The description is: *Ball- "The Ball Family History" by Cecil & Betty LaFond, 2003 Black soft cover with a clear front Author: Copied & compiled by Cecil & Betty LaFond.*

Genealogy

Some Eaton County names:

Info from Cephas Parson Ball obituary: At 18 years old, married Susan E. Tichenor in Brookfield Twp, living there 3 years, then moving to Hamlin Twp for 20 years.

All of the Daniel Ball and wife Diantha Clark Ball children were sons except one daughter, who married a Henry Verplank of Eaton County.

Daniel Monroe Ball & Clara Alta Wilbur, married June 16, 1901.



4th. generation;

I. Daniel Monroe Ball and Clara Alta Wilbur (married Jun. 16, 1901)
(Jul. 26, 1877-Feb. 11, 1953) (Oct. 9, 1883-May, 2, 1947)

1. Hazel Elizabeth	Apr. 5, 1902 -----Oct. 26, 1989
2. Ira Monroe	Dec. 4, 1903 -----Mar. 25, 1955
3. Carl Parson	Mar. 17, 1907 -----Dec. 5, 1989
4. Arthur L.	April 18, 1909 -----Feb. 20, 1988
5. Martin Allen	Dec. 27, 1910 -----May 9, 1973
6. Cephas Harrison	Sep. 21, 1912 -----Feb. 2, 2003
7. Ralph Earl	Jun. 1, 1914 -----Apr. 5, 1994
8. Gerald Maurice	Feb. 2, 1916 -----
9. Francis Lafayette	Jun. 28, 1917 -----Feb. 4, 1929
10. David Gardner	Feb. 15, 1920 -----Dec. 7, 1965
11. Clara Emma	Dec. 24, 1922 -----
12. Doris Lydia	Dec. 15, 1924 -----

Eaton County Military Special Interest Group

The Military Group meetings have been suspended until further notice. The purpose of this group is still very important to us and we very much welcome receiving military information via the online method of either emailing materials and information to us and/or filling out the on-line military form. It may not get on the website as quickly as we would like, but it will get there eventually.

An on-line [Veteran Form](#) is available for people to complete, for either themselves or other veterans, and submit. The purpose of this form is to obtain information about veterans, such as when they served, and load the veteran into our Military Database.

Some on-line form entries we have received are from Larry Randall (for himself), Janet Baughman (for Thomas VanBuren) and Rhonda Mubarakeh (for Ronald Bowser). Thank you for your information!

Veteran	MilitaryInfo
Ronald Duane Bowser	1955-1959, Sailor: Navy. Between Korea & Vietnam. Stationed at Oakland CA, shipped out to Hawaii, Japan, Philippines.
Thomas Bryon VanBuren (died 3/12/1921, Sunfield Township, Eaton County, Michigan. Buried Sunfield Cemetery.)	2/21/1865 - 2-19-1867, LDS & Master at Arms: Enlisted 2/21/1865 in Chicago Illinois Navy Served aboard the following ships: Great Western 2/21/1865-3/1/1865, Manhattan O.S. 3/2/1865-6/30/1865, Manhattan O.S. 7/1/1865-7/31/1865, Fear Not 8/1/1865-11/25/1865; Port Royal 11/26/1865-3/1/1866, Chocoma 3/1/1866-6/30/1866; IRON CLADS - 7/1/1866-10/31/1866, IRON CLADS N.O. Master at Arms 11/1/1866-3/19/1867 When Discharged.
Larry Randall	1954-1959, E5: US ARMY WHEELED VEHICLE MECHANIC. Cold War. FORT LEONARD WOOD, MO CHINON, FRANCE. Medals: GOOD CONDUCT, MARKSMAN. COLD WAR MEDAL

Please feel free to send scanned items and/or information to us by email and we will add it to our Military website page. Send your email to ecgsmilitary@gmail.com.



We have a Facebook page called "Eaton County Michigan—Military Special Interest Group". We encourage people to like this page and to post Eaton County military information. While this Facebook page is not frequently visited, it will not be discontinued. It will not be updated as often as in the past.

Visit our Military website at www.miegs.org/MilitarySIG.shtml. Our Military information will always be available to whoever is interested in viewing it!

Thank you if you have participated with us before and if you do in the future!



This newsletter is created from information members have submitted. **Anyone is welcome (and encouraged!) to submit** Eaton County family history information or articles. Please email these to ecgsnews@gmail.com and designate the information you would like included, such as your location and/or email address. Your submission must be signed. Pictures are welcomed!

While the newsletter is available for all to read from our ECGS website, only members may post queries and member happenings.

All digital newsletter issues will be available on our website with a target date of posting them on the 1st of each month. See the www.miegs.org/Newsletters.shtml.

Note: Some clipart used in our newsletter was provided by [MyCuteGraphics](http://MyCuteGraphics.com).

Ways You Can Help to Volunteer at (or for) ECGS

Please note: We appreciate any help we receive! We will never pressure you to help us! We only ask if you have volunteered for room duty and you cannot make it, call (phone numbers provided) us and let us know to get coverage.

Room Volunteers: Room volunteers are here to help people who come in to research. While some of our room volunteers actually help do the research, this is not a requirement. The main tasks are to answer the phone and guide the researchers to our various areas they can research.

Probate Packet Scanning: This is an on-going project that meets regularly at the ECGS room to scan probate packets on Tuesday afternoons. However, anyone can scan when the room is open.

Indexing and/or proofreading at home: Using scanned images, we can show you how to index and/or proofread at your own leisure at home.

Mini Take-Home projects: This is a brand new type of project we are trying. People have taken home several projects and we will see how that goes.

Special Projects: Possibly set up an area in our room that will have special projects that you can work on when you come in. Again... new idea to try! More to come on this.

Every effort is made to present authentic material; the Eaton County Genealogical Society cannot be held responsible for the accuracy or the publishing rights of material furnished by contributors.

Thank You!

Thanks to all of you who donate in any way to our Society! Our Society is run by volunteers and is funded by donations and fund-raisers.

Eaton County Genealogical Society Publications Order List

P.O. Box 337, Charlotte, MI 48813-0337 Phone 517-543-8792

As of January 1, 2015

Item	Cost per item	Total Cost
Cemeteries of Eaton County, MI:		
Brookfield Twp., 41 pp., indexed as of September 1991	\$ 8.00	
Chester Twp., 66 pp., indexed as of July 1990	\$ 8.00	
Roxand Twp., 86 pp., indexed as of January 1993	\$10.00	
Sunfield Twp., 44 pp., indexed as of April 1991	\$10.00	
Walton Twp., 119 pp., indexed as of March 1996	\$10.00	
Maple Hill Cemetery (Eaton Twp.), indexed as of 2009	\$20.00	
Kalamo Twp., 102 pp., indexed as of 2001	\$18.00	
Vermontville Twp., 122 pp., indexed as of 2001	\$18.00	
Burkhead-Green Funeral Home, Charlotte, MI 27 Mar, 1885 thru 29 Dec, 1947, 198 pp., indexed	*** \$18.00	
Pray Funeral Home, Charlotte, MI 18 Nov 1921 to 21 May 1932, 112 pp., indexed	\$18.00	
Naturalization Index for Eaton Co., MI 55 pp.	\$ 4.25	
Eaton County Quest, back issues, #1 through current available (please specify issue no.)	\$ 4.50	
Plat maps of Eaton County, MI, individual townships (please specify which townships). (Note: Shipping up to 16 townships count as one item.)		
1860 Price is \$.25 per Township (Hamlin Twp. Not available)	\$.25	
1873 Price is \$.25 per Township	\$.25	
1895 Price is \$.25 per Township	\$.25	
1913 Price is \$.25 per Township	\$.25	
Cemetery Symbols CD (see www.miegs.org/Symbols.shtml for more information)	\$12.00	

Shipping & Handling

1-3 items - \$2.20

3-5 items - \$3.30

6 or more items - \$6.60

*** Note: Please add \$2.50 for each "Burkhead-Green Funeral Home" book.

Sub total _____

MI res. Add 6% sales tax _____

Shipping & Handling _____

Total Due _____

Send the above items to (please print)

Name _____ Phone _____

Address _____

City _____ State _____ Zip Code _____

Amount enclosed _____ Check No. _____

(Please make checks payable to: Eaton County Genealogical Society)

Please note: We plan to address publications in the next year and hopefully will be adding more to our selection. Also, we plan to offer these through the website using PayPal.